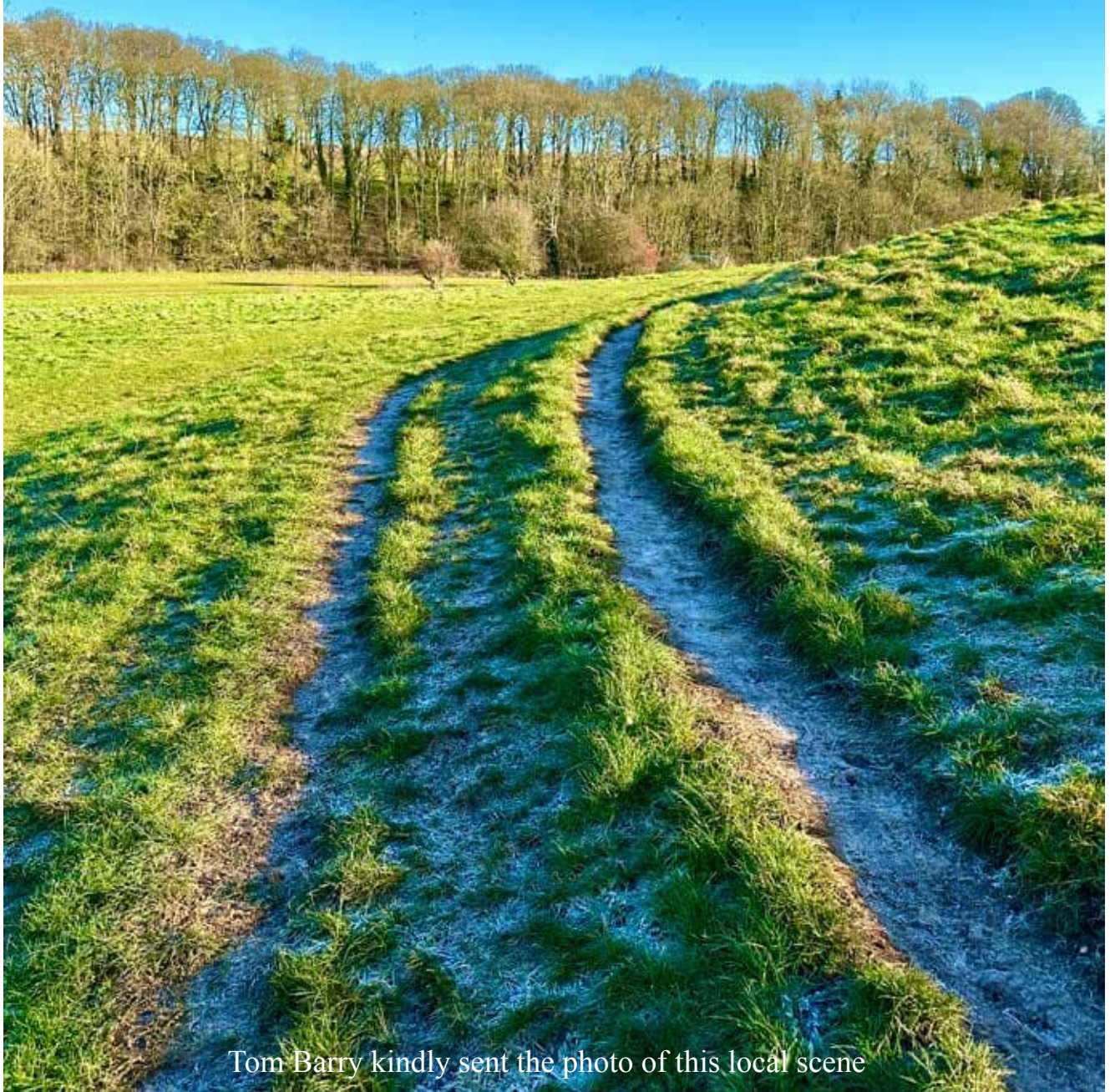


THE BRIDGE

March 2024



Tom Barry kindly sent the photo of this local scene

This monthly magazine covers people and events in our area of the Cotswolds, and is delivered free of charge to residences and businesses in Aldsworth, Asthall, Asthall Leigh, the Barringtons, Bradwell Village, Burford, Field Assarts, Fordwells, Fulbrook, Holwell, Northleach, Sherborne, Shilton, Signet, Swinbrook, Taynton, Upton, Westwell, Widford and Windrush.

Volume 15, Number 2, £1.50



Amanda Hanley
Bespoke Interior Design
with Showroom in Burford

Upholstery & Furnishing • Fabrics • Bespoke Kitchens & Cabinetry • Furniture

33 High Street, Burford, OX18 4QA
01993 822 680 07976 353 996 amanda@amandahanley.co.uk www.amandahanley.co.uk

01993 220 579
burford@taylerandfletcher.co.uk

Tayler & Fletcher



SOLD



SOLD



SOLD



James Skinner
Residential Sales Manager



Alison Denny
Residential Sales



Celebrating 5 years in Burford

Providence House, 49 High Street, Burford, Oxfordshire, OX18 4QA



Hickman Brothers Landscapes Ltd

GARDEN & LANDSCAPE SUPPLIES

Shop online at www.hickmanlandscapes.co.uk



Contact us on - 01993 822226
sales@hickmanlandscapes.co.uk

Opening Times

Monday - Friday 07:30 - 17:00

Saturday 08:00 - 14:00

SKIP & PLANT HIRE

Hickman Bros Landscapes, Shipton Hill, Fulbrook, Burford, OX18 4BZ



EDITORS' NOTES



Snowdrop Sunday

Many readers will have visited Burford Priory on 11 February when Matthew Freud opened his garden to allow us to admire *Galanthus nivalis* in all its glory. This year seems to have been an especially good one for snowdrops. The weather was bright and sunny. Around 900 people attended. All the gate proceeds totalling £2616 went to Helen & Douglas House, a local charity which helps children with life-limiting and terminal conditions and which has a much-frequented shop in the Lower High Street in Burford.

The Creation

Last month we noted Brian Kay's retirement as director of music for the Burford Singers. His farewell concert was a performance of Handel's *Messiah* so it seems appropriate that Will Dawes, his successor, is starting his tenure with Haydn's *Creation*, a work inspired by the composer hearing Handel's oratorios during visits to London in the 1790s. You can read about Will's distinguished musical career and future plans in this magazine.

Fibre

Have you signed up with Gigaclear since they dug up our roads to lay new cables around our streets to deliver super fast broadband? If so, perhaps you could let us know via editor@thebridgeburford.co.uk what your experience has been. We understand that replacing copper wires with fibre is the direction we are all going in but we have also noticed a few negative comments about the service.

Welcome

It's good to hear this month from new residents at Cotswold Gate that they are pleased with the town and the welcome they have received here. As we have mentioned before, volunteering to help at the library or with the Festival is a good way to get to know more people here. Information about the latter can be found within.

Fulbrook Planning

Last month Hugo Ashton mentioned the fact that a swathe of land in Fulbrook had been put forward as suitable for development. There is much more this month - if it went ahead it would add as much housing as the whole of Cotswold Gate and double the size of the village.

EDITORIAL POLICY

As is customary with publications, the decision of the editors on what can and cannot be published is final. In particular, they will edit or decline to publish anything which in their opinion includes personal attacks on any individual, is expressed in unduly partisan language or is offensive, in bad taste or potentially defamatory. Opinions expressed by contributors are entirely their own and the appearance of any letters or articles in The Bridge does not indicate that the editors agree with them. Items may also be edited and may be rejected. Where items or services are offered for sale, or advertised, the provider is responsible for ensuring that the goods or services are safe and of good quality. The editors may refuse to publish advertisements or other statements about unsuitable items or services. The Bridge does not accept responsibility for the accuracy of advertisements and does not endorse any goods or services which are advertised. All items submitted for inclusion must give the name and address of the writer and an email address or telephone number. By submitting any article, announcement, letter or advertisement to The Bridge you are deemed to have agreed to the above.

All advertisements in The Bridge are accepted subject to The Bridge Terms and Conditions of Advertising 2021 which can be viewed on our website www.thebridgeburford.co.uk

BURFORD TOWN COUNCIL REPORT

As I write this to keep you all up to date, I realise my "News" will be "Old News" when you read it, especially for fast-moving projects like the Play Park construction which is now on its fourth week. It is taking shape well with the project on time.

You will see elsewhere that the WODC Local Plan 2041 call for sites has received applications for four sites, which WODC will screen. The town council will be a consultee, and the outline site details are in the WODC councillor's report this month. Please let us know if you have any opinions about the sites early in March if possible, even though they are only in outline at this time, so that we can provide a well considered response to WODC. If you would like more details, please contact me.

There are still too many vehicles parking on the pavements on The Hill and churning up the grass verges. We are investigating installing metal bollards on the access points on each side to replace the wooden posts which are regularly knocked down, to deter vehicles from damaging the verges. In addition, the double yellow lines on the pavements will be re-marked in the spring, and vehicles that park illegally will be reported to OCC parking enforcement.

One piece of news that will be up to date at the end of February is that the six blocks of purple crocuses planted over the last three years on the verges each side of The Hill by members of the Rotary Club of Burford and Kingham should be in full bloom, weather permitting. The purple crocus is the Rotary's emblem for polio eradication which they have supported since 1988.

We have requested WODC to re-mark all the white lines and the upright kerbs in their Guildenford car park for the safety of pedestrians, especially at night. Hopefully the re-marking will be carried out soon.

We have received a grant to replace the two dead trees in the Oxford Road Community Orchard, and to extend the Orchard with another 12-15 trees to the west. My thanks to the community there who looked after the original orchard through the dry summer periods over the last two years.



Some good news.... On 6 February the appeal against the refusal of the planning application for 70 dwellings on Cole's Field was withdrawn - more on this elsewhere in this edition.
Peter Higgs - Mayor.
Peter.higgs@burford-tc.gov.uk
07836 238306



Open Gardens



One of the most popular events at the Burford Festival has always been the Open Gardens. All being well, many of our gardens will be open again this year on 8 and 9 June.

Whilst several of the old favourites have already agreed to take part, we are also looking to add some new ones to our list.

The Open Gardens event is not a competition and is open to everyone in Burford to take part if they wish. If this is something you would be willing to do, please contact Lorna Millard-Bourne (lornamillardbourne@yahoo.co.uk) or Adrian Jackson (adrjack007@gmail.com) for more details.

Friends of Burford Party



Asthall Manor ballroom is the exclusive venue for our spring Friends of Burford Festival drinks soir  e to be held on Friday 19 April from 6 - 8pm.

The evening will enable Friends to meet our Festival Trustees while enjoying a selection of delicious canap  s and wine. Musical entertainment will be provided by local Oxfordshire jazz group, Thames Trio, who will delight party goers with a repertoire of jazz and Latin music from the Great American Songbook.

Become a member today to secure your personal invitation and to enjoy private Friends' events, supporting the 2024 Burford Festival for £60 per person or £100 per couple subscription.

We also offer Perpetual Friends membership at the beneficial price of £30 per member or just £50 per couple; Perpetual Friends pay annual subscription by standing order. Just go to burfordfestival.org/support-us/ and follow the link for details of how to support us or email treasurer@burfordfestival.org.

Cider with Rosie -

Auditions for a Rehearsed Reading

A reminder that members of the Burford community are invited to take part in a rehearsed reading of Laurie Lee's classic, "Cider with Rosie" to be performed on Saturday 8 June as part of the 2024 Burford Festival.



Informal auditions will be held at the Quaker Meeting House on Pytt's Lane on 16 April at 7pm and anyone interested in participating is welcome to attend.

Please contact joannamckerlie@icloud.com if you are interested but cannot attend on that date.

Calling all Volunteers

Burford Festival committee are looking for more volunteers to assist with the Festival this year and would be delighted to hear from anyone who might be interested in helping with events and the running of the Festival.

Please contact ann.morris21@gmail.com if you are interested.

Watch out for more information on the website - www.burfordfestival.org and buy your tickets from www.ticketsource.co.uk/burford-festival.



COLE'S FIELD

Greystoke has withdrawn its appeal. This is a tremendous and triumphant victory for Burford and common sense. Greystoke has given no reasons for its decision, nor is it required to do so, but Burford Town Council is in no doubt that the most important factor was the immediate, well-reasoned and highly articulate response from the almost unanimous residents opposing the original application. So well done and thank you to every one of you.



Inevitably, I must pour a drop of cold water. Under our planning laws, ridiculous as they are, there is nothing to stop Greystoke (or anybody else who strikes a deal with the Coles as owners of the field) making another application to develop this iconic site. However, in winning the Seventh Battle of Cole's Field, we have made it just that little bit more difficult for a developer to desecrate what used to be our Area of Outstanding Natural Beauty but what we now have to call The Cotswold National Landscape (a new name which is not only moronic but also oxymoronic!).
John White - Burford Town Council

BURFORD & DISTRICT HORTICULTURAL SOCIETY



At our January meeting we learned about all the bearded iris. An engaging talk covered history, pharmaceutical uses, early breeders of hybrids, propagation, classes of plants (miniature to tall), uses in gardens, current breeders and Chelsea Show winners, and the art of the iris.

We learnt that there is no red or pure white iris. The absence of red means that very dark colours are purpley, but not true black. Nearly-white irises often feature green in the petals. Petals can be frilly or not, and blossoms perfumed or not. Some will repeat flower, others do it all in one big burst. I suspect come the summer there'll be a revival of bearded irises in local gardens – there's a colour combination and size to suit virtually any location. Alun and Jill Whitehead did us proud.

Looking forward, the day-long coach trip to David Austin Roses (home of the National Collection of English roses) on Thursday 27 June is expected to be very popular. The fee covers travel, a guided tour of the six gardens, and a question-and-answer session, and 10% discount on plant purchases. You can take a picnic, or pay as you go at the restaurant or tea room. £25 per person.

If you can't wait that long, an afternoon car outing to Court House Garden at Stretton on Fosse is planned for Thursday 25 April, costing £10 for the garden visit and tea. The four acres offers lots of variety: a newly-planted north wall, herbaceous borders, winter garden, topiary, walled kitchen garden, roses, ferns and greenhouses. Succulent plants will be on sale.

Contact Jan Cohen on 01993 822288 or email cohen4sp@btinternet.com to book your place on either trip.

The next local event is the AGM (members only) on 22 February, then a talk on 28 March from a previous Royal Horticultural Society judge of our local horticultural show on Shows and Showing - and no doubt a great deal else, from this enthusiast on all things horticultural.

Ruth Reavley

THERE IS SO MUCH TO ENJOY AT YOUR LIBRARY

Every week Burford Library is the venue for a fabulous range of activities:

- **Knit (or Sew) & Natter** : First Tuesday of every month 2—3 pm
- **Book Group** : Last Tuesday of every month 2—3 pm
- **Gadget and IT Support**: Third Tuesday of every month 1-3pm - *booking essential*
- **Reminiscence Morning**: Third Friday of every month —10.30 to 11.30 am. 17 Nov/22 Dec
- **Puzzle Club** : Every Friday—10.30 to 12 noon, excluding Reminiscence morning
- **Scrabble Evenings** : First Tuesday every month—7 to 9 pm
- **Family History** : If anyone would like help starting a family tree, or breaking down brick walls, please contact Jan Cohen: cohen4sp@btinternet.com

All Welcome to any of the above at your Library

Please register an interest with Carol-Amy at the Library or phone 01993 823377

Refreshments are provided—donations to the Friends of Burford Library

BURFORD LIBRARY 86 High Street, Burford— 01993 823377 (behind Sue Ryder)

Library Opening Hours - see Useful Contacts page



theWI
INSPIRING WOMEN

None of us relish January. The short days, the lack of sunlight and, this year, the rain! Fortunately the Fab WI has ways of making the month more enjoyable. Apart from keeping in touch with our WI friends via our very active WhatsApp group we have plenty to keep us engaged and occupied including our traditional New Year Dinner. This year it was held at the Burford Golf Club and was a resounding success. The food and service were great.

Our January meeting was a lively debate around the four resolutions put to members by the National Federation. They cover a wide range of issues: the effects of the chronic shortage of NHS dentists nationally, addressing poor housing conditions, a call for a complete ban on gambling advertising and to reform decision making in respect of women in the criminal justice system, especially women with children. Despite there being extremely detailed National briefing resources, The Fab WI went a step further to research how these issues impact our local communities and how local interventions could help.

On 12 March, we hold our AGM where we'll share some of the programme planned for the year, which will be followed by a fish-and-chip supper. Each year according to WI constitution we must vote on a president.

We are keen to give local residents early sight of our planned 9 April meeting. We are really excited to have not only a talk but actual owls from Witney. The presentation is titled: "Owls, Our Rescue, Work and their History and Conversation" by Chrissie Gaines. Guests are very welcome for a suggested donation of £5 to any of our meetings. We expect the owls will to be popular.

The Fab WI meets on the **second Tuesday of each month** in the Baptist Chapel in Witney Street at 7.30 p.m. and warmly welcomes visitors to all of our meetings.

For further information please visit our website thefabwi.org.uk or FB page search 'The Fulbrook and Burford WI (FAB WI)' or contact our president, Jennie Craven, on thefabwi@oxfordshirewi.co.uk or Mobile 07710 103015.
Angela Weller

BURFORD AND KINGHAM ROTARY

We held a farewell dinner on 22 January for Laith Reynolds and his wife Jan, as they are going back to Australia to live full time. Having for many years split time between Burford and Perth, Laith was a member in both

places. We will miss him as he has been a keen Rotarian and a very knowledgeable one. We will also miss his contacts in Burford where he has many friends, our loss is Perth's gain. We were delighted to present him with a Rotary tankard.

We were very pleased on that evening to present Ruth Madders from Bridewell Mental Health Gardens with a cheque for £1000. This was presented by past president Colin Stringfellow as the money was raised in his year.

Why not think about joining Rotary? We meet at Burford Golf Club on Mondays 6.30pm for 7.00pm (except Bank Holidays). We are a small but very friendly vibrant group, with members from all the local villages in the area. We are always looking to increase our membership. You will get a very warm welcome.

Contact our secretary John Smith jpw.smith@jasss.co.uk 07717883182. If I can also give you any more details about Rotary, please do give me a ring. I would love to hear from you to have an informal chat .
Ros Richardson = 01608 643844 /07702135731



INTRODUCING WILL DAWES

Will Dawes, as music buffs and attentive Bridge readers will know, is the new director of the Burford Singers. He took over from Brian Kay at the end of last year. A highly accomplished musician as both a singer and a conductor, he was selected for the job early in 2023 after interviews and auditioning by conducting the ensemble as they prepared for their Easter concert. At the time we spoke to Will he had held the first rehearsals for his debut concert which will take place on 24 March.

He does not come from a musical family. They are best known for Dawes Cycles, founded by his great-great-grandfather, rather than for the performing arts. But during his early years in Berkshire his parents let him try music and by the age of four he was singing in choirs and learning the piano and violin. He says he owes a great deal to the Berkshire Young Musicians Trust for what he learnt in his childhood and is grateful for the wonderful (almost) free musical education which was available in those days. He studied music at Edinburgh University and then went on to the Royal Academy of Music in London to study choral conducting. On graduating he was awarded the Thomas Armstrong Prize for Choral Direction.

After that he pursued parallel careers as a baritone singer and a conductor. Most of his singing has been in small groups although he has also performed as a soloist. Notably, he spent 16 years in Stile Antico, one of the world's leading vocal ensembles. Their speciality is Renaissance music but they also perform works by contemporary composers. They have just 12 members and do not work with a conductor (or, as Will jokes, they have 12 conductors). They work out their interpretations by mutual agreement. (You can sample their work on their website - highly recommended). He was also a Lay Clerk (adult choir member) at Christ Church Cathedral in Oxford and has sung with, amongst others, the BBC Singers and Collegium Vocale Gent.

He has worked as a conductor with more groups than space is available to list. Notable work includes being director of the Henley Choral Society from 2007 to 2013 and the Bath Choral Society from 2011 to 2016. He founded Frideswide Voices, a choir for girls between the ages of seven to 14 to sing at evensong at Oxford colleges. This was the very first girls choir specifically formed to sing at services in Oxford. It is now the girls choir at the cathedral. He also founded Ensemble 45 which is made up of singers who are students, recent graduates and not-so-recent graduates of Oxford University.

Does he see himself as a singer who also conducts or as a conductor who also sings? For a time he was a singer who conducts, especially because of his work with Stile Antico which involved travel all round the world. However he feels he has been on a trajectory towards choral conducting ever since he studied it at the RAM. Not that he has given up singing altogether. He still has some concerts



Photo: Marco Borggreve

in his diary and mentions forthcoming performances with The Sixteen, another top-rated group, as part of their 2024 Choral Pilgrimage and around Holy Week.

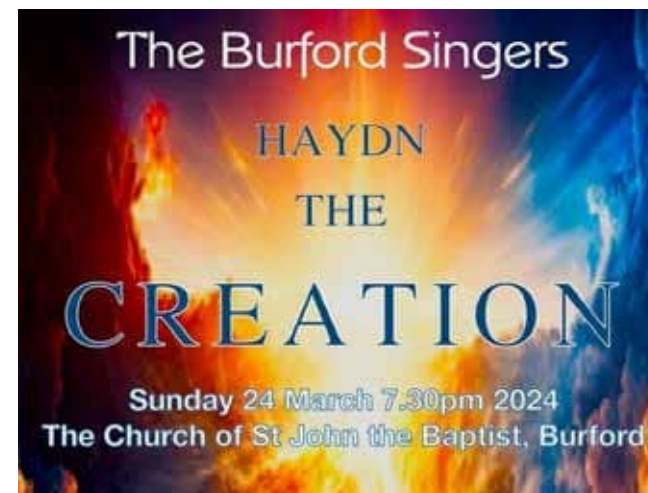
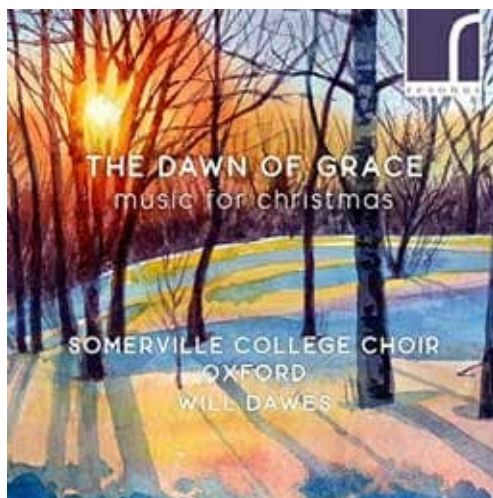
His journey towards conducting was helped by getting married. His wife, Dr Katie Bank, comes from California. Her doctorate was in musicology rather than medicine and she is an academic at Birmingham University. They met while singing in yet another group, the Orlando Chamber Choir. (Choirs must be excellent dating agencies). They now have a small son, Beckett, who was born early last year. He is already well-travelled, having taken ten flights so far, including crossing the Atlantic four times. His arrival has led Will to try to spend more time working closer to home. He left Stile Antico last July (at the time of our talk he was recovering from his belated leaving party).

That left him with two regular jobs, both near home in Oxford. The first is being Director of Chapel Music at Somerville College which has a 26-strong choir which sings at secular events in College, and further afield including two visits to India under his guidance. They have recorded a CD called The Dawn of Grace consisting of 20th and 21st century Christmas music solely by female composers – more recordings and tours are planned. The second is as Director of Music at St Mary Magdalen's Church in Oxford. In contrast with Somerville, this has music provided by an octet of professional singers.

Will felt that this left him with space for a third job, and the retirement of Brian Kay from the Burford Singers turned out to be the opportunity he was looking for. He found Brian very welcoming and helpful during their handover. They have in common that they both started as baritone singers before moving to conducting. Brian has promised to come to the Singers' concerts and Will is looking forward to seeing his predecessor sitting in the front row. Brian also presented a baton to Will, purely symbolically as neither of them uses one. Will says in the fullness of time he will literally pass on the baton to his successor.

Will's first concert with the Singers will be a performance of Haydn's *Creation*. He chose this as it is a personal favourite and, as it is sung in English and isn't too demanding for the chorus, allowing plenty of time for him and them to get to know each other during the rehearsal period. Plans are already in place for a concert during the Festival in June where the programme will be a mixture of sacred and secular choral music by Finzi, Elgar, Vaughan Williams, and the choir's patron, Bob Chilcott. Future ambitions? "I would like to conduct Monteverdi's *Vespers of 1610* again and the Verdi *Requiem*, but the latter would be difficult to perform in Burford Church without breaking some windows." There could also be more 20th century music, though nothing to frighten the horses. "There's so much attractive and accessible music out there that isn't by dead white men".

We are sure that he will lead the Burford Singers from strength to strength. It promises to be an interesting journey. *Gordon Elliot*



**Burford Singers with
Cotswold Chamber Orchestra
Leader: Kate Bailey
Soprano: Robyn Allegra Parton
Tenor: Sebastian Hill
Bass baritone: Florian Störz
Conductor: Will Dawes**

Tickets reserved at £25, £20, £15, unreserved £10
Online booking (Booking fee applies)
at <https://www.burfordsingers.org.uk/buy-tickets/>
Booking in person (unreserved tickets only) at
The Madhatter Bookshop
122, High Street, Burford OX18 4QJ

And on the door
Details on our website <https://www.burfordsingers.org.uk/events/>
Catherine Martin



The autumn/winter season of the Lenthall Concerts is drawing to a close. Once again Michael Bochmann and the committee have put together a rich and varied programme and we hope that those of you who have joined us have enjoyed hearing each of the musicians perform. The children who have taken part from time to time have certainly gained much from the experience and appreciate your support.

We now look forward to our grand finale on **Wednesday 27 March** entitled **Sound the Trumpet!** Paul Archibald, who will be playing alongside Helen Reid on piano, is a trumpeter you will have heard many times on the radio and on recordings of classical music. He was part of the famous Philip Jones Brass Ensemble and toured the world.

Do join us for this rousing concert which promises to be a scintillating programme of great variety from a supreme expert. The concert takes place at Burford School at 7.00pm. Tickets are £20 on the door or, in advance, from Ticket Source. For further details please visit our website at: www.lenthallconcerts.org.uk

Sarah Duckworth

WINDRUSH RURAL CINEMA

Saturday 6 April

A Haunting in Venice

Windrush Village Hall - 7.30 pm - Tickets £5
Starring Kenneth Branagh, Jamie Dornan, Kelly Reilly, Michelle Yeoh

Director: Kenneth Branagh

In post-World War II Venice, Poirot, now retired and living in his own exile, reluctantly attends a seance. But when one of the guests is murdered, it is up to the former detective to once again uncover the killer.

windrushcinema@gmail.com

Brendan Boyle

WYCHWOOD PLAYERS



We shall be staging *Arsenic & Old Lace*, by Joseph Kesselring on 25-27 April at 7.30pm. Performances will take place at New Beaconsfield Hall, Shipton-under-Wychwood, ticket price £12 plus booking fee. Further details will be available on our website www.wychwoodplayers.com.

Philip Croxson

We understand that Cary Grant is not available.- Ed.

FRIENDS OF BURFORD LIBRARY

It's always great at this time of the year to see the long winter nights beginning to shorten and the snowdrops starting to emerge. Similarly welcome, as spring approaches, is our popular fish and chip quiz supper at the Royal Oak on 28 February which, at the time of going to press, was sold out. But never fear, if you missed out on this popular event there's still our Pimms and Poetry afternoon in the summer and autumn Plonk and Pudding evening to look forward to.

Whilst we love seeing you all at our various events throughout the year, we also need your support in other ways. The library's book collection is constantly updated and we also hold a fantastic range of other reading materials, so why not pay us a visit and take a look for yourself. You can also find information on the various activities taking place throughout the month including reminiscence group, knit and natter and Scrabble evenings.

As ever we are always looking for new volunteers, so if you think you might like to join our happy band of individuals who help to keep Burford library open for the town please contact Liz Deverson on lizdev@btinternet.com.

Ann Morris



Lecture on Wednesday 13 March
The Art of Dance



Since the birth of the earliest human civilisations, dance has been an important part of ceremony, rituals, and celebrations, a method of healing and a means of expression and entertainment. Using stills and video clips Jennifer looks at dance as an art form from its earliest beginnings - through the birth and rapid development of ballet throughout Europe. She will then take us through the explosion of modern dance in the early 20th century, a time of unprecedented creative growth for dancers and choreographers; and, with the growth of post-modernism from the 1960s, the expansion of street dance, hip-hop, break dancing and rock dance.

Jennifer Toynbee-Holmes is an experienced guide at Tate Britain and Tate Modern and lectures at various art societies and institutions. She has a special interest in British and European art of the late 18th, 19th and early 20th century. Having gained an MA in film and television practice, Jennifer had a long-standing career as a television producer/director making documentaries and factual programmes for the BBC, ITV and Channel 4. She has also been a visiting lecturer at various universities.

This hybrid lecture will be held at the Warwick Hall, Church Green, Burford, OX18 4RZ at 11am and via Zoom. Please be seated by 10.50 for notices of upcoming events. Numbers are no longer restricted but booking is recommended to reserve a place via our website (see below) Non-members are welcome (space permitting) at a charge of £10.

Further information will be circulated via the newsletter and bookings can be made via the website (see below) or please call Lisa Etheridge on 01285 711805 for a booking form.

To learn more about The Arts Society Cotswolds and to see what lectures, Special Interest Days and other activities are planned, please see our website:

www.theartsocietycotswolds.org.uk
Or contact Carolyn Walton on 01993 822296
Alison Morgans

THE ARTS SOCIETY COTSWOLDS is looking for a volunteer who has some AV and/or Zoom experience. We simply need someone who can support our Lecture mornings (second Wednesday of the month) in the event that our usual volunteer is unable to attend.

If you think you might be able to help, *please contact Carolyn Walton on 01993 822296*

ALICE'S BOOK GROUP

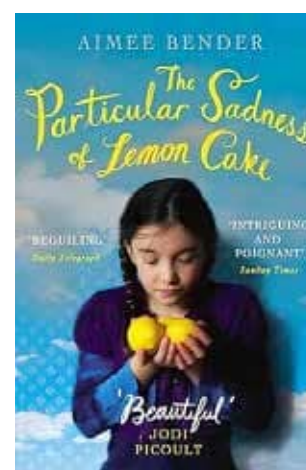
The Particular Sadness of Lemon Cake by Aimee Bender; with a title like that it should be obvious that it would be a weird book and it was not well received at all by Alice's Book Group. It is set in Los Angeles, and one does get a feeling for the suburban life, far removed from the glitz on television and cinema screens, indeed the writing is quite good, not too American for our taste, but the story soon veers into the fantastical. Rose Edelstein is the youngest child in a typical American family, two parents and an older brother living typical urban lives, but Rose at nine develops the ability to taste the emotions of the person who cooked her food, whereby she learns unpalatable truths about her family and those who provide meals and snacks. It appears that the majority of individual cooks are dissatisfied, and Rose feels their pain and bitterness. She rejoices when she finds food by a happy person; otherwise she tries to exist on soulless factory food as machines have no emotions, though she can detect the mood of those that grow the ingredients. This gift, or curse, is impossible to share widely, and those in whom she does confide, bar one, either deride or exploit her. The exception is a charmer, really the only sympathetic character in the book, but he moves on too soon. The story gets even more unbelievable as it becomes apparent that her brother also has an ability to morph into furniture*. This takes over his life and then he disappears – perhaps he becomes a chair, we never know.

At the close of the story the adult Rose learns to cook and to harness her tasting talent, making her future seems brighter. Which is all very well, but we readers are left famished for the taste of something more entertaining; it is possible the story is allegorical, has a deeper meaning, but if so, it passed us by. I usually try to avoid giving away the plot of books the group has read However, I have given an outline of this book, as few of the group finished it, none really enjoyed it, there were at least two “ghastlies”. One member bravely reminded us that the point of the group is to expand our reading choices, but as we all felt this book stretched our tolerance too far, I feel duty-bound to warn you and assume no one will want to read it, unless to check if our opinions are justified.

Next we read *Lessons in Chemistry* by Bonnie Garmus which promises to be very interesting and sane.

Veral Marshall

Perhaps he was a tallboy? -Ed



Don't forget to look at our website
www.thebridgeburford.co.uk too for updates on
local news, previous features and topical
photographs
And for more photos about Burford events do
look at Burford Life on Facebook

GUIDED WALKS WITH THE COTSWOLD VOLUNTARY WARDENS

Details of the walks available are described on the website (below). **Please check walk details carefully on the website, including whether booking is necessary. Additional walks may be published on the website.**

<https://www.cotswoldsanb.org.uk/visiting-and-exploring/guided-walks/>

A Watery Walk in the North Cotswolds– Tuesday 21st March – Moderate 3.5hr 7ml

This is a watery walk only in name, as we follow the River Windrush towards its source, cross a ford, encounter a sheepwash and cross a little bridge. The route wends along less well-known paths through the countryside passing through only very small villages. The paths are hilly with one short, steep slope just after Pinnock up through beech woods. Bring drinks/snack.

Start: 10.00am Temple Guiting Village Hall. OS Map ref: SP 090 279. W3W: premises.quality.billiard

Lockdown Loop - Friday 22 March-Easy 4.5 miles 3 hours

It is now, almost to the day, four years since the country was locked down. This walk was done regularly by a warden during 2020. We pass through the villages of Milton-under-Wychwood, Shipton-under-Wychwood and the surrounding countryside giving variety and interest.

Lunch options after the walk.

Start: 10.00 New Beaconsfield Hall Shipton under Wychwood OX7 6BH

Asthall, less history, more views - Saturday 23 March Moderate 7 miles 3.5 hours

A circular walk with some lovely views across Asthall and the Windrush Valley. Please bring refreshments for a mid-morning break with a view.

Start: 10.00am. Park at the top lane in Asthall near to the entrance to Asthall Manor. OX18 4HW

PLEASE use appropriate footwear as some walks may be steep and muddy in places. EASY - Length may vary but terrain is mainly flat (level); MODERATE - includes some hills and rough ground. STRENUOUS – may be rough underfoot and ascents and descents may be steep. We welcome guide and hearing dogs - sorry, others not allowed. Walks are free although we do invite donations to help fund our conservation and improvement work.

If you enjoy walking and would like to join the Cotswold Voluntary Wardens as a walk leader you can find out more on our website www.cotswolds-nl.org.uk or email cwv.east.guidedwalks@gmail.com Our next training day is in April. There is also a course on map reading and a first-aid course. Sharing our wonderful landscape and heritage with others is a truly wonderful way to spend your time.

Sheila Wasley and Rosemary Wilson



NEW TO BURFORD AND AREA?

Welcome. The Burford & District Society will be happy to deliver your free copy of the 'Living in Burford & District' pack with details of many of the local facilities, clubs and societies. Simply email your name and address to lizannjack@gmail.com.

Mike Russell has kindly provided photos of two creatures you may see on your walks - a March hare and a male green woodpecker.



LORD PIERCY OF BURFORD

In our July 2023 edition we published an article by Bert Clough (available to read on our website) about Lord (Bill) Piercy who had distinguished careers in both the Civil Service and the City and was owner of the Great House. Clendon Daukes takes up the story.



Bert Clough's careful research was helped by the Piercy family and in particular by James, the 1st Lord Piercy's grandson. These contacts with Bert led to the family's offer to the Museum & Archive of a fine portrait of the 1st Lord Piercy, painted by Maurice Codner RA. The offer of the painting was gratefully accepted both because Piercy was such a prominent Burfordian and because of the connection between The Great House and the Museum's wonderful Dolls House.



On 16 January James Piercy, accompanied by his sisters Lavinia and Henrietta, visited Burford to present the painting to the Museum & Archive's trustees. The family was shown the town's new archive in Swan Lane, was taken round the Museum (in the middle of its winter reorganisation) and, after lunch, given the opportunity to revisit The Great House which they remembered when their grandparents lived in it. David and Cita Suratgar, the current owners, had kindly authorised the visit under the kind auspices of Savills, their estate agents. Outbursts of recognition and reminiscence could be heard as the Piercys toured the house. On its return from a little conservation the portrait will be hung in the Archive.

Clendon Daukes

COMMUNITY TRANSPORT

Since time immemorial, or at least as long as the editors can remember, the Useful Contacts page of The Bridge has included an entry for Dial-A-Ride under the heading Community Transport. Recently a reader contacted us to report that she was having difficulty getting through to them. Upon investigation we discovered that Dial-A-Ride is defunct (although their details are still shown on the OCC website.). We are advised that there are two alternatives available, Oxfordshire Comet and Volunteer Link Up (VLU). They are now listed in the magazine.

VLU is based in Witney but offers help across West Oxfordshire in three main areas:

Transport - For those who are not able to drive themselves or if public transport is difficult, volunteer drivers can take them to important appointments. They prioritise medical and dental appointments but they can also assist with visiting loved ones in care homes and to go shopping. Mileage expenses are charged to cover the cost of petrol, which are paid direct to the driver. Drivers use their own cars.

Befriending - For those feeling isolated or lonely, befrienders will visit for company and conversation. Befrienders can also help with sorting post and other small administrative tasks.

Practical jobs - Volunteers can help jobs around the house and garden such as changing a light bulb, re-tuning the television, lawn mowing, weeding, general tidying in the garden or small DIY jobs that don't take long but make life a lot easier. Please note, volunteers don't do cleaning, ironing or personal care.

VLU can be contacted on 01993 776277 or by email to office@vlu.org.uk and more details can be found on vlu.org.uk

Help is, of course, only available if they can find a suitable volunteer.

Oxfordshire Comet is a not-for-profit service set up to allow people without suitable access to public transport to make the journeys they want. It can be used for any kind of trip within Oxfordshire. You do have to pay. To book it you have to have a pre-paid account which can be set up by telephoning 01865 323201. The service is available from 10am to 2pm on Mondays to Fridays except Bank Holidays. More from OCC's website under public transport/accessible transport.

NOTE: The editors have no first-hand knowledge of the reliability or suitability of either of the above organisations and this information is based solely on what it says on their respective websites.

ELECTION NEWS

No, don't go straight to the next article, this is quite important.

Unless you are a politics junkie, you may not have noticed that the map of parliamentary constituencies in Oxfordshire has been radically redrawn as a result of recommendations from the Boundary Commission. Because of movement of population, the number of voters in constituencies can change over the years. This is felt undesirable as it may mean that in effect a vote in a place with fewer voters will carry more weight than one where there are more residents, and this can distort election results. Every decade or so the Boundary Commission has the mind-numbing task of trying to make sure that the numbers are roughly equal.



Until now Oxfordshire has had seven MPs. Under the new boundaries there will be eight and the numbers of voters have been rebalanced between them. West Oxfordshire District will be split between three constituencies rather than all being part of the Witney seat. Witney will lose a number of towns and villages to the north and east while gaining others to the south. Out go Charlbury, Chadlington, Chipping Norton, Kingham, the Bartons and several other wards which, although part of West Oxfordshire for local government purposes, will now go into Banbury. Farewell also to Eynsham and Cassington, Freeland and Hanborough, Woodstock and others to find a home in the newly-created constituency of Bicester and Woodstock. Instead, please welcome Faringdon, Kingston Bagpuize (or Bagpipe as our spellchecker insists on calling it), Thames (places south of the river such as Buckland and Hinton Waldrist) and Watchfield and Shrivenham. Politics addicts can find the full details on the Boundary Commission website under *2023 review/constituency names, composition and designation*.

What effect this will have on the outcome of the election in these parts is not for us to say but no doubt the local parties will be poring over the changes with calculators poised.

DON'T FORGET: In order to vote you will need to make sure that you are registered to do so and remember that you will need to produce photo ID on election day. If in doubt contact WODC electoral services for help.

Editors

HOW MUCH DO WE CARE ABOUT THE FUTURE AND SCALE OF FULBROOK?

A great many Fulbrook villagers have been horrified to learn of the recent proposal to WODC that it should allocate two sites in Fulbrook to its proposed scheme of development in the Local Plan for 2031 and the following ten years.

The proposal came from Welbeck CP, a developer from Gateshead, one of whose directors and part owner of the land is a close relative of a long-standing resident. All of the six hectares on Westhall Hill on the left hand side of the lane leading up to the top of the settlement and the further end of Garnes Lane, where currently traffic cannot access, is up for development if WODC decide to include this land in the Local Plan. The scale of this would be tantamount to doubling the size of the village. It is a similar scale to that created on Shilton Road opposite the garden centre. It would dominate the village and double our current footprint. The Garnes Lane proposal appears to experienced planning eyes to be intended to create four executive homes.

We believe that anyone who lives in Fulbrook will see immediately how irrevocably destructive this would be. The village, on two days' notice, came together, called by the Parish Council, and unanimously voted in November against any such proposals. The Parish Councillors have a duty to listen to this view and to reflect it in carrying out the Parish Council's service to the village.

Many villagers have been by turn deeply heartbroken and angered by the unimaginable idea that ancient settled pasture land (as the Union4 proposal suggests) might be turned into a complex of roads and street lights, with a handful of seeds scattered to improve the biodiversity of these two existing wildernesses. One of these, Westhall Hill, because of its situation overlooking Burford, especially lends itself naturally to the beauty of Burford's historic landscape, with all its listed buildings and patina. The badgers, barn owls, buzzards and deer currently resident here would be driven out. The pressure that would impact on infrastructure, traffic, surgery, schools, livelihoods, transport and shopping is evident and doesn't need repeating here. We are sure also that residents of Burford can see how destructive this would be for local biodiversity, the carbon sink of such areas, the effect on the wider landscape and, importantly, welcoming our annual visitors.

Fulbrook Parish Council wrote to WODC with the headlines on why such a proposal would be inappropriate. Burford Town Council were intending to write also and we hope that they did. *(They did - Ed.)* We now wait to see what WODC will decide. Although the land supply requirement is being reduced by this government this year, it is short-term optimism to think that this is something profit-driven house builders will take their eye off. These proposals would provide many tens of millions of pounds to the owners but to the detriment of the entire village. They won't be giving up easily.

As has happened in Burford with the proposal for Cole's Field, which many in Fulbrook have joined in opposing through the many and various stages with WODC, the threat of development in Fulbrook is now here to stay unless we all engage and apply ourselves with energy and skill to support the Parish Council actively, attend its meetings and demand that expertise is applied henceforth.

Please contact the Parish Clerk at clerk@fulbrookvillage.net to register your concern and if you would like to offer help in any way and be kept fully informed. If you are from Burford then of course we would also very much appreciate hearing from you because this affects all of us.

Victoria Marsh and Sara Hall

OCC COUNCILLOR REPORT

Councils Secure £600M Additional Funding Package

Communities secretary Michael Gove last month announced a total of £600m of additional funding for local authorities in England – including a £500m addition to the social care grant, and a £100m increase in core spending power. OCC is expected to benefit to an amount of approximately £5m. OCC is continuing to work towards a balanced budget and reduce the £11.2m budget deficit mentioned in my last report. Reducing the deficit could be achieved by a combination of a surplus from council tax receipts, some reductions in services and various changes to savings and organisational costs. This still needs further discussion.

Budget Proposals For 2024/25

This unexpected development noted above means that the Liberal Democrat/Green administration and opposition groups are having to rework their Budget proposals. As previously reported, the minority administration cannot pass a Budget without support of the opposition parties. A meeting of full council on Tuesday 20 February will have voted on the options. However, intense negotiations between the parties are expected in advance of this once the proposals have been published and every attempt will be made to reach a balanced budget.

Jump In Profits Made Keeping Children In Care

The Times reported last month that children's groups have accused private sector-backed firms of making "obscene" profits, charging councils up to £280,000 per year to care for young people. An investigation reveals the average cost of residential care for a child is £5,400 per week, exceeding £10,000 in some cases. Councils pay 25% more than two years ago, and the income of the top 20 independent care operators reached £1.63bn last year, with 19% as profit - up six points from the year before. The House Magazine survey shows the average annual cost of residential placement is £281,000, six times the cost of keeping an adult in prison. The highest annual average was £373,000 in the London borough of Sutton. The Children's Home Association argued: "There is a huge difference between 'profit' and 'profiteering'. The cost increase between public and private provision has been comparable for several years."

Fixmystreet App Improvements For Quicker And More Efficient Response

Oxfordshire's FixMyStreet app, which allows residents to report potholes, faulty street lights and a host of other street defects and queries, has been updated. The number of categories has been streamlined but they have now been split up into sub-categories to make it easier for people to find the section they are looking for. In some cases, more information and illustrations have been provided to help users choose the most appropriate category. The changes are aimed at reducing the number of reports sent to the wrong department or council, which can delay the problem being resolved. The updated version also includes an aerial map of the county, as well as a regular map, to help people pinpoint the location of the problem. The changes will be monitored over the next three months to see what impact they have, and the views of users will be sought. More than 1,000 reports are regularly made to Fix My Street every week, with users encouraged to include photographs of the defect to help the inspectors.

Proposal To Move County Council Offices To New Offices To Progress

After extensive and independent evaluation, and consideration by a cross-party cabinet advisory group on city centre accommodation, it's proposed that the council moves its Oxford headquarters from County Hall to a reimagined Speedwell House campus. The sale or lease of County Hall is expected to meet the refurbishment costs of Speedwell House, which is already owned by OCC.

OCC Cllr Nicholas Field-Johnson, Burford & Carterton North - nick.fieldjohnson@oxfordshire.gov.uk and nfjuk3@gmail.com



BAT-TASTIC TALES



Two members of the Oxfordshire Bat Group will give a talk at the Asthall Leigh Memorial Hall on Saturday 2 March. at 7.30, doors open at 7pm. After the talk there will be a Q & A session and then there will be an opportunity to see some live bats. These are bats which have been rescued by the group but which are not able to go back into the wild due to a permanent injury. The event is free. The bar will be open from 7pm.

Lynne Hughson

BURFORD OIL SYNDICATE



(Covering Burford, Fulbrook, Taynton and Bradwell Village Only)

Next order date is Thursday 14 March 2024 by 5.00pm. Late orders will not be accepted. Deliveries for the March order are expected to be by the end of March, depending on market conditions. You can join the syndicate and order online at www.burfordoil.co.uk, or membership application forms, and order forms are available from Reavley's Chemist. Any questions please contact *Peter Higgs - 822462*.

WODC COUNCILLOR REPORT

The full results of WODC's 'Call for Sites' has now been published. There are no additional sites in Fulbrook, beyond the two that were submitted online, but four sites have been put forward for consideration in Burford. These are:

- Burford Laundry, Tannery Yard, for a change of use from commercial to include 8-10 houses
- Land south of Sheep Street, past the surgery, up to 20ha, proposed residential
- OCC's land north of Burford School (3.2ha), on the A40 opposite the school, residential
- OCC's Burford Wysdom Caravan Park (0.5ha), behind Starbucks, adjacent to the school, proposed residential.

No details have been put forward about the possible forms of development at this stage. The next step for WODC is to consider the suitability of the sites in the context of the emerging new local plan. The strategic planning team will finalise the criteria to be applied to site selection (expected by the end of February). They will then consult with local town/parish councils on the suitability of sites and for what land use (expected to be in March/April). Burford Town Council will draw together local views pending this consultation, so do send any comments to the town clerk (town.clerk@burford-tc.gov.uk).

Now to turn to sewage. The eagle-eyed amongst you will have noted from Thames Water's new online real-time map of untreated sewage discharges that the Burford Sewage Treatment Works (STW) was unable to cope with the rain on 7/8 February and overflowed into the Windrush for 32 hours. (Pity Bourton-on-the-Water and Witney whose STWs were still overflowing at the time of writing, several days after the rain had stopped). What, you may ask is the district council doing about this sorry state of affairs?

Despite WODC having no obligation nor legal powers to deal with this matter, a triumvirate of our councillors (Lidia Arciszewska, Charlie Maynard and Alaric Smith), supported by officers and Windrush Against Sewage Pollution, has had monthly meetings with Thames Water (TW) and has made significant progress in a number of areas.

Increased transparency - we joined other groups of campaigners demanding that TW provide an online information tool that allows real-time tracking of sewage discharges. TW responded and for a year now residents have had access to the map that displays where and for how long the spills are taking place.

More accurate estimates of required capacity – we discovered that TW was using an appallingly inaccurate approach to calculate the capacities that were required for their STWs. Step by step, we challenged TW's calculations and eventually both sides agreed what the realistic capacity values were for the nine largest STWs in West Oxfordshire. That was a big win for WODC as it meant we could advocate for investments for the necessary infrastructure upgrades.

More realistic responses to planning applications - in the past, TW used to tick "OK" on virtually every application regardless of the lack of existing or planned capacity of the sewer network or STW. Responding to our pressure, TW now requests a so-called 'Grampian condition' on applications for housing developments in areas with insufficient capacity. This states that new homes in the development can't be occupied until sewage treatment infrastructure is in place and operational.

Furthermore, from April this year we have insisted that developers, at the pre-application stage, must provide a statement from TW that infrastructure to accommodate the sewage flows from the proposed development is deliverable. We continually urge TW to deal with perennial leaks from the sewerage network at various hot spots in the District. Maintenance of the aged sewer network is on the agenda of every meeting with them, and we have also encouraged TW to develop an app that would allow residents to directly report any problems with the network.

Our work has gained the attention of other councils. We have produced a toolkit guidance for other councils on how to do this work with other water companies. Cotswolds District Council is already following our footprints. *Hugo Ashton*
District Councillor for Burford, Fulbrook and Taynton
hugo.ashton@westoxon.gov.uk or 0771 2490517



Our thanks to Peter Martin for sending us this image of the Burford Recreation ground in Spring



ANOTHER LOCAL CENTENARIAN



On the same day that Jean Taubenheim celebrates her 100th birthday, – 26 February, my mother Mary Clark MBE celebrated hers too. After moving to Burford in 2011, Mary now lives in the Cotswold Home, Bradwell Village.



Mary was born in Chingford but lived her adult life in Hertfordshire, Surrey and Somerset. She was a Wren from 1943 to 1945, serving as a Signals Distribution Watch keeper in the tunnels deep under Dover Castle, including during the intense period before and after D-Day. When she retired to Crewkerne she led a project to establish a local museum for which she was awarded the MBE. Mary was married for 65 years to Hugh who was awarded the Military Cross for his role in the glider assault across the Rhine in March 1945. They had four children Judith, Peter, Elizabeth and Jonathan.

Judith Butcher - The first photograph was taken by me on

my parents’ 65th wedding anniversary in 2010. The second was taken by my brother at Buckingham Palace in 2001 when my mother received her MBE.

A PROBLEM WITH BURFORD BRIDGE, 1789-91

The problems we have with Burford Bridge today are hardly new. The medieval bridge was probably built to replace an earlier one and/or supplement the old Anglo-Saxon ford; but the builders used Roman principles of construction. The condition of the bridge was certainly a concern in the Stuart period. Raymond and Joan Moody tell us that:

In 1651 a declaration was made at the Lent Assizes that part of Burford Bridge lying in the parish of Fulbrook was in a ruinous condition with one side wall at least missing and it was Fulbrook's duty to repair it. In 1654 Burford sued Fulbrook for not maintaining its share and the grumbling went on. There was steady expenditure on the bridge and continuing impatience with Fulbrook. Then in 1789 Burford and Fulbrook joined to launch a prosecution against the county.

A document recently discovered by David Cohen in the Moody Collection in the Tolsey Archive throws light on this prosecution. Burford and Fulbrook sued the County of Oxford because "the Bridge was and is so ruinous, broken and dangerous and in such decay that the liege subjects of our lord the king [George III] cannot pass upon and over the bridge without great danger to their lives"; but the lawyers for the County defended the case vigorously. They pointed to an Act of Parliament passed in 1531 which provided that, where a bridge was situated in a community which was a body corporate, that body was responsible for repairing it; that Burford was a body corporate; and that, while Fulbrook was not such a body, its inhabitants had in fact repaired their 'moietie' (that is roughly half) the bridge in the past.

The detailed arguments used by Oxfordshire therefore differed, according to which 'moietie' of the bridge they were concerned with. I shall deal with those addressed to Fulbrook elsewhere; but in relation to Burford, Oxford contended that the town had a charter from the reign of Henry II (who died in 1189); that at one time it returned an MP to Parliament; that it had aldermen, bailiffs, burgesses, a steward and a town clerk, who all wore gowns, had a mace, a common seal and held courts for the election of their officers; that it owned land by means of trustees or feoffees; that the schoolmaster of the Free School was elected; and that the townsmen levied tolls, in relation both to the bridge and to Burford Fair.

All this proved that Burford was indeed a 'body corporate'; and it is not surprising that the prosecution failed, and that Burford and Fulbrook each had to pay up. This explains why, as the Moodys also tell us:

In September of 1791 the parish Surveyor of the Highway declared that the bridge has lately undergone a thorough and substantial repair and so was safe for traffic again.

Stephen Cooper



LETTER TO THE EDITORS

Happy Landing

Greetings for 2024, from the Beechcroft residents (flats and houses for the over-55s) at Cotswold Gate off the Shilton Road- “Upper Burford”. We share the site with the Lioncourt Development, which was a little ahead of Beechcroft, but our buildings are steadily filling up, and we now have a lively community here, including a residents’ lounge where we can meet together.

The main purpose in writing is to put on record how much we – most of us newcomers - appreciate all that Burford has to offer. Many of us find the walk into town to be just the right length to stretch our legs, and enjoy the shops, cafes and pubs, including the history behind all Burford’s buildings. Several of us have joined community activities – the Lenthall concerts, jazz evenings, scrabble at the library, church services, the WI, and the local golf club, not to mention haircuts – and of course the network of lovely Cotswold walks nearby. You won’t be surprised that we’ve always found a friendly welcome.

It was a great idea to name our small estate roads after some of those who died in the First World War, whose names are on the war memorial in town. It helps to confirm we are part of the Burford community. And of course we read The Bridge to keep abreast of all that is going on.

Beechcroft Residents’ Representatives Group (RRG).

Many of us have noticed the positive contribution made by recent newcomers and their welcome involvement in local matters - Ed.



Two thousand and twenty four promises to be a busy BEAGling year, with events planned on 18 March, 10 June and 18 June, the latter two under the auspices of the Burford Festival – so it’s very much a story of watch this space.

Before that, however, we wanted to tell you about the Witney Eco Forum. Every month they have very high calibre speakers, and Thursday, 8 February was no exception: Pete Sudbury, OCC deputy leader with particular responsibility for Climate Change, the environment and future generations gave a very thought-provoking talk about the future, bringing together the relevant science and data in an accessible, visual, and engaging way. He drew on his background as a psychiatrist, lecturer, pioneer in biochar and silvopasture (Google it!) enterprises, and – last but definitely not least - current father of young children; what sort of a future are we passing on with the prospect of temperatures more than 1.5 degrees above pre-industrial levels. Although Pete is a Green Party councillor, the Eco Forum is very much non-political; an event late last year featured our MP Robert Courts debating with the Bishop of Oxford on the government’s plans for Net Zero.

Our 18 March meeting at the Old Hall, Warwick Hall, at 7.30pm is dedicated to nature recovery, when one of our number and a founding member of Transition Chipping Norton, Marcus Simmons, will be setting out the visions of the Mid-Windrush Valley Land and Nature Group, which Burford is bang smack in the middle of, geographically speaking. Joining us will be the Cotswolds River Trust, with a remit to conserve, protect, rehabilitate and improve the Thames tributaries rising within the Cotswold Area of Outstanding Natural Beauty.

The next Burford Repair Cafe will be held on 1 April (Bank Holiday Monday) at the Bowls Club, alongside the Burford Scouts' car boot sale. Open from 9.30 until 12 noon. We are always in need of more fixers, particularly sewers (the needle and thread sort), electronics repairers and jewellery menders. Contact Alan (alanrburch@gmail.com) if you would like to join in.

At the beginning of the Festival, on 10 June, we be will be holding a panel debate on how West Oxfordshire - and Burford in particular - can meet the challenge of Net Zero and the energy challenges of the coming century. Panellists will include our local Burford-based grid connection consultancy Roadnight Taylor, local Green Party councillor Rosie Pearson as well as others and will be moderated by our very own (and part-time comedian) Paul Miller. In the spirit of the Festival this promises to be a very enlightening and thought-provoking debate.

Lastly, at the tail end of the Festival, Burford will be having our very own "Love the River" day on 15 June. It came from an idea we had about turning all our gloom about rivers in general and the Windrush in particular into a celebration of the river; plans are still evolving, but it’s likely to involve a walk from Burford to Asthall, welcoming joiners at any point, and there would be various spots for river testing, but it’s not all serious stuff; we would also hope to weave in poetry, folklore, and story-telling.

Andy Hayter

Growing Organic Vegetables Successful strategies in the Cotswolds

Illustrated talk by Val Bourne Daily Telegraph columnist & organic gardener



Saturday, March 16th 7.00pm £12 / £15, a free drink included At Northleach Post Office and northleachevents.co.uk



CHRIS WALKER

1952-2024

It is with great sadness that we announce that our great friend and the town's highly regarded, long-standing Head of Collections at the Burford Tolsey Museum died on 8 January after a relatively short but pernicious battle with cancer.

For many years, Chris almost single-handedly, became the town's 'Mr Museum', and successfully saved and secured a wealth of local artefacts for future generations to enjoy the stories of their local heritage. He and his incredible encyclopaedic local knowledge will be sorely missed by so many. It is of some relief to believe that he left us not only happy that that his long-term dream of having a separate Archive had been achieved but also reassured that his beloved museum was in safe hands.

Quite simply, Chris Walker, was a great Burfordian who has left us with a magnificent and thriving legacy - an absolute gentleman and a great friend. Our thoughts and love are with Jenny, and his family, Nathan, Drew and Alice and their families.

Before we became aware that Chris was unwell, we had started work on a book to contain many of the great articles Chris had written under the heading of 'Treasures of the Burford Museum'. Whilst it isn't due to be published until later in the year, we would like to think that when it is released it will serve as a small tribute to this wonderful man's achievements. At this sad time, I'm sure that many will be interested to read the brief history to the Museum that Chris wrote at our request for the book, outlining his great involvement in the Museum:

History of the Burford Tolsey Museum and Chris Walker's involvement

The foundations of the collection were laid when the Burford Corporation was dissolved in 1861, and the ancient muniments, maces and seals were placed in the hands of Dr T H Cheatle, the last Burgess and son of the last alderman, surgeon Mr C T Cheatle. This important and unique collection, which was first recorded by the Historic Manuscripts Commission in the 1830s, remained at Riverside, Dr Cheatle's house and surgery, and in 1926 he secured an agreement with the Treasury Solicitor that the muniments and maces should remain with him intact during his lifetime, and in Burford thereafter provided a suitable and secure home could be provided for them.

Meanwhile, in 1920 Richard Gretton published *The Burford Records* in which he calendared and interpreted the records to provide the basis of his *Study of Minor Town Government*. Alongside his own work, Richard Gretton's wife Mary Sturge Gretton researched more of the social history of the town, publishing *Burford Past and Present* also in 1920. In the 1945 second edition of her work for a fundraising event for the maintenance of Burford Church, Mrs. Gretton wrote that:

'On a day of June 1939, I agreed to gather and exhibit a number of remnants of Burford's past which I knew to be reposing in cupboards and garden sheds...My aim was to bring to the notice of newcomers those inhabitants who could show proof of their great-grandparents' artificer avocations in Burford.'

Mrs Gretton was helped in this work by Roger Warner, a young Yorkshireman who had recently arrived in Burford with his mother to establish a shop selling antiques, which eventually remained open for fifty years.

During his dealership, Roger Warner went on to discover many more remnants of Burford's past, and whilst most of these were of little commercial value he recognised with unique foresight that they would be important when the story of Burford came to be told. This vision Roger was able to fulfil for the Tolsey Museum, opened in 1960, by acquiring display cases from the Ashmolean Museum and elsewhere in which he arranged the treasures, providing a three-dimensional flavour of bygone Burford through genuine artefacts, to an appreciative visitor audience. An annual special exhibition gave added interest for repeat visitors.

As more items were secured, the showcase displays became crowded, and following a report in the early 1970s by Richard Foster of the Oxford County Museum Service, *The Future of the Tolsey Museum*, a then young Christopher Walker took up the challenge of assisting in reorganising the displays. His role was always practical, taking great pains to make the displays interesting, and to provide informative captions. When Christopher Baines retired from being Chairman of the Tolsey Museum Committee, Chris Walker was chosen as his successor, with Christopher Baines continuing as Archivist.

As Chairman Chris Walker was thrust into administrative tasks

outside his comfort zone, but for 20 years very successfully took over the running and management of the Museum. New display cabinets were commissioned when a generous bequest came from Colonel Swynnerton, and several important artefacts were acquired through Chris's discoveries through the antiques trade. Not the least of these is the magnificent so-called Keble Mortar of 1659, made by the Burford Bellfounder Edward Neale. Chris brought its availability to the attention of the committee, and a public appeal secured the bronze at auction for the Museum.

A groundswell of vision by a group of local residents saw the need to provide a home for a huge amount of Archive material within the town, and when this came to fruition, Chris Walker was happy to stand aside from his Chairman's position, allowing those with wider administrative and organisational skills to take the expanded Burford Tolsey Museum & Archive into a new era, but still retaining a consultative role alongside a fifty-strong team of volunteers.

Peter Martin

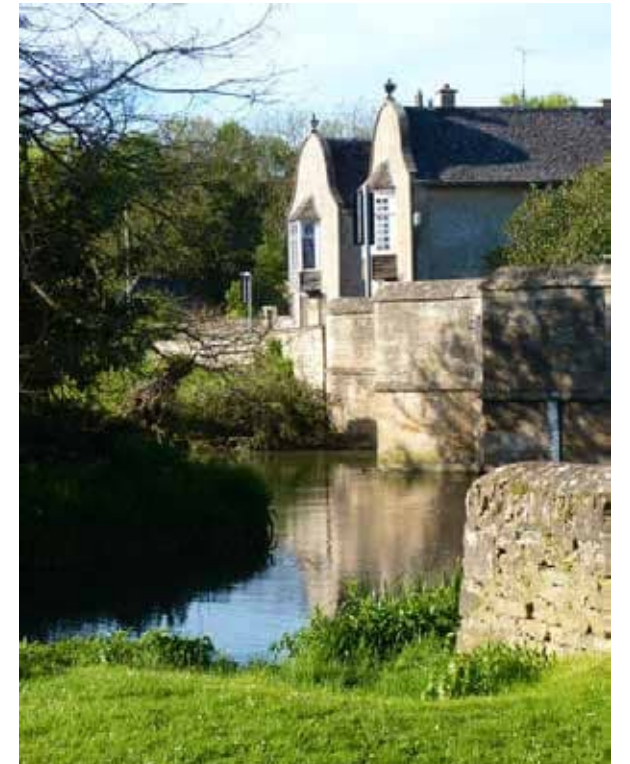
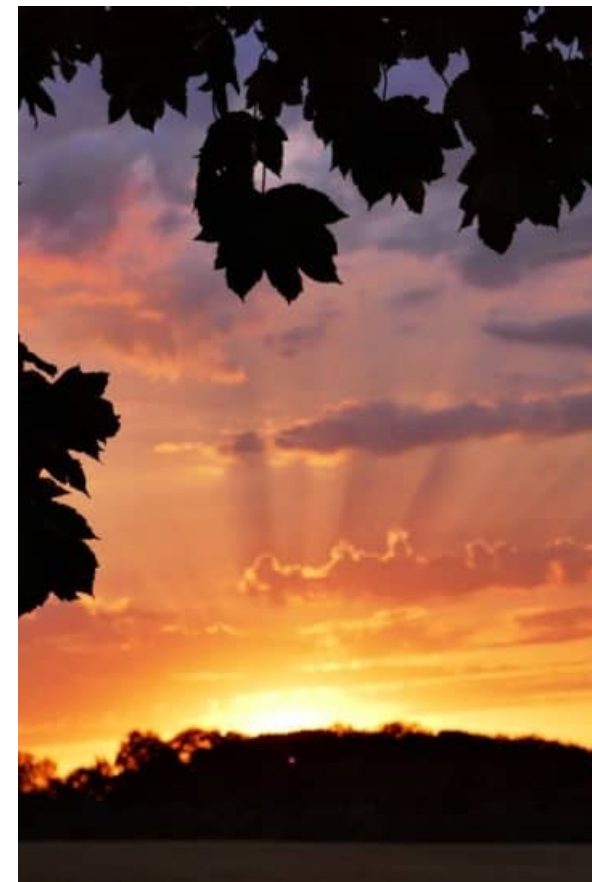


BURFORD and DISTRICT SOCIETY



Peter Martin chaired his final AGM with his usual humour and generous praise of his colleagues in the BDS. In particular he thanked Sylvia Demmery, Ken Craven and Ken Gray for their support and contributions to the society. In the February issue of *The Bridge* there is a long list of Peter's tremendous achievements in the six years he has been chairman of the BDS and the good news is that Peter will continue his commitment to local matters and events, particularly his involvement with the Tolsey Archive. Among Peter's talents, he is also an excellent photographer and has helpfully provided a number of photos to this magazine, two of which are shown here.

Stephen Cooper is the new chairman and details about him will be included in the April edition.



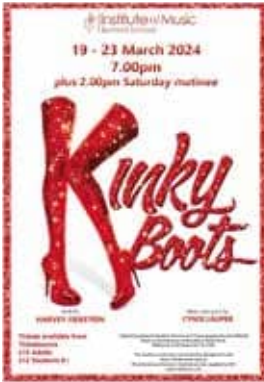
We have received the following information just before going to press.

JEAN TAUBENHEIM

In our February edition, we reported that Jean Taubenheim would be celebrating her 100th birthday on 26 February. Sadly, she did not quite make that date, passing away on the morning of 20 February. Michael comments that "she obviously did not want to be an antique". The photograph shows her when she was three with her brothers, and her mother who is standing on her right hand side.



BURFORD SCHOOL



Burford Institute of Music performs KINKY BOOTS on Tuesday 19 March - Saturday 23 March in Burford School. Tickets at www.ticketsource.co.uk/burford-school 7.00 pm (2.00 pm Saturday matinee) Featuring a Tony and Grammy-winning score by Cyndi Lauper, the book by Tony winner Harvey Fierstein, and the direction and choreography of Tony winner Jerry Mitchell, KINKY BOOTS is a reminder to celebrate your life triumphantly.

It has inspired audiences across the globe with its highly uplifting storyline, which emphasises how we can change the world when we change our minds. Suitable for those above the age of eight years old, get ready for glitter and glamour and a whole lot of sole! We hope you will join us and support our talented young performers.

Clementine Bright



“March is the month of expectation”.....Emily Dickinson This month expectations are running high. Behind the front doors and around dining tables a fabulous feast of festivals is being planned and prepared for your delectation.

Burford Festival is back in June and Burford Literary Festival in September. SAVE THE DATES now. www.burfordlitfest.co.uk www.burfordfestival.org There is so much more to celebrate in Burford than simply its stunning architecture and history. The people of Burford come together to bring you events from singers to authors, from protecting our environment to creating spaces for families and our High Street is a part of that community.

A recent article in The Times stated that indie bookshops are not only a place to meet like minded and swap literary recommendations but bring people together and help bind the local community. A new study commissioned by the Booksellers Association showed that over 90% of booksellers work actively to support local priorities, such as place marketing, walkability, provision of recreational and cultural spaces and maintaining economic attractive town and city centres. For most booksellers, including myself, the job is not simply about making a living to pay the mortgage and support a family; it is a passion for people. It is about recommending the perfect read to a regular customer but also knowing their name, their children’s names, their cat’s name, taking a seat and having a chat; this is community and I for one am delighted to be a part of it.

In 2023 we brought you book bars, comedy at the bookshop, book signings and, of course, lit fest 23. For 2024 we have even bigger plans to bring all our friends together and we can’t wait to see you there.

Watch this space, or even better, pop in for a chat, we are sure you will be delighted.

Kim Harvey

THE BRIDGE TEAM

Steve Richards, who looked after our advertising for several years has moved to Filkins (which is outside The Bridge area), and so has passed the advertising baton on to Burford residents Karl and Ann Morris. We are grateful to Steve for looking after this important part of The Bridge magazine so well and we welcome Karl and Ann to the team.

In addition to a large number of valuable, helpful distributors, the Bridge team now consists of the following people whose photographs are shown below:

Advertising Managers	Karl & Ann Morris
Commercial Artist	David Mostyn
Editors	Gordon & Elaine Elliot
Founder/Chief Distributor	Clendon Daukes
Proof Reader	Judy Cumming
Roving Reporter	Ruth Reavley
Website and IT Adviser	Pete Freeman



THE BRIDGE TIMETABLE

The closing date for entries to the editorial sections of the magazine is the 10th of the month preceding publication. Please contact:

editor@thebridgeburford.co.uk
Alternatively, you can leave letters and articles at the Post Office in Burford for us to collect.

Advertisements need to be booked before the 10th of the month preceding publication. Please contact:

advertise@thebridgeburford.co.uk

DIARY OF SPECIAL EVENTS

Sat 2 Mar	Talk about Bats	Asthall Leigh Memorial Hall	7.30pm
Sun 10 Mar	An editor’s birthday	Burford	All day
Tues 12 Mar	FABW1 AGM and Fish & Chip Supper	Baptist Chapel	7.30pm
Wed 13 Mar	The Arts Society Lecture - The Art of Dance	Warwick Hall	10.50
Fri 15 Mar	Carterton Fire Walk - see article for details	TBC	tbc
Sat 16 Mar	Talk - Successful Strategies for growing vegetables in the Cotswolds	Northleach Church	7pm
Mon 18 Mar	BEAGles Talk by Mid-Windrush Valley Land and Nature Group	Old Hall, Warwick Hall, Burford	7.30pm
19-23 March	Musical - Kinky Boots	Burford School	7pm/2pm
Sun 24 Mar	Burford Singers - Haydn’s Creation	Burford Parish Church	7.30pm
Wed 27 Mar	Lenthall Concert - Sound The Trumpet!	Burford School	7pm
Thu 28 Mar	Burford & District Horticultural Society Talk - Shows and Showing	Burford Bowls Club	2.15
Mon 1 April	Repair Cafe	Burford Bowls Club	9.30-12
Mon 1 April	Scout Car Boot Sale	West Field, Burford	
Sat 6 April	Windrush Rural Cinema - A Haunting in Venice	Windrush Village Hall	7.30pm
Tues 9 April	FABW1 Talk - About Owls	Baptist Chapel	7.30pm
Wed 10 April	TASC AGM and Lecture - The Hidden World of Canal Architecture	Warwick Hall	10.30
Sat 13 April	London Festival Opera “A Night at the Opera” northleachevents.co.uk	Northleach Church	7.30pm
Tue 16 April	Auditions for Cider with Rosie	Quaker Meeting House	7pm
Fri 19 April	Party for Friends of Burford Festival	Asthall Manor	6pm
Thu 25 April	Burford & District Horticultural Society Outing to Court House Garden	See article for details	
25-27 April	Wychwood Players - Arsenic and Old Lace	New Beaconsfield Hall, Shipton-Under-Wychwood	7.30pm
25-27 April	Plant Sale Bridewell Gardens	Wilcote	10am-1pm
Mon 6 May	Scout Car Boot Sale	West Field, Burford	
Sat 11 May	Fulbrook Plant Sale	Carpenters Arms	10-12
Thu 23 May	Asthall Parish Council Annual Meeting	TBC	tbc
Mon 27 May	Scout Car Boot Sale	West Field, Burford	
6-16 June	Burford Festival		
Sun 23 June	Taynton Open Gardens	Taynton	2pm-5pm
Mon 26 Aug	Scout Car Boot Sale	West Field, Burford	

This information is sometimes out of date but included as a prompt for people to remind us what Clubs, Societies and Regular Events still exist and who is the contact for them.

REGULAR LOCAL EVENTS, CLUBS AND SOCIETIES

Aerobics	Monday and two on Thursday	Warwick Hall Monday 6.15pm, Thursday 11.45 and 6.15pm	Gill Hames 822971 gillianhames46@gmail.com
Astally Arms	Last Friday of the month	Memorial Hall Asthall Leigh	From 7.00 pm
Badminton Group	Monday nights	Burford School 8-10pm. Friendly, all abilities	Kevin 704655 scareyradar@yahoo.co.uk
BEAGles aka Burford Environment Action Group	Third Monday of the month	The Prince of Burford	7.30pm
Burford Badminton Club	Tuesday nights 8-10pm	Burford School - fun, social, all abilities	Vijay 891043 vijaysmobile@gmail.com
Burford Crafters	3rd Wednesday of the month	Burford Library 2.30-3.30	Judith Butcher 01993 824194
Burford & District Society	Meet 7 times a year	Warwick Hall at 7.00pm	Bert Clough, Secretary 07943 720668
Burford Town Bowls Club	Friendly Roll-up all Mondays	Bowls Club from 6.30 pm	Pat Walker 01993 822330 patr47@btinternet.com
Burford Trees care/planting	4th Sunday of the month	Community Allotment - Tanners Lane	lucy.staveley@gmail.com
Burford Writing Club	2nd and 4th Tuesday each month	Varies. 7.30-9pm	ashley.v.count@gmail.com
Coffee and Company	Every Wednesday	St John the Baptist Church 10.30 - 12 midday	Diana Peters 01993 822785
Cub Scouts	Mondays (term time)	Scout Hut 6 - 7.30 pm	Mandy Bielby 07941 470465
Fencing	Tuesdays	Bradwell Village 7-9pm	Keith Money 01982 448295
Fulbrook & Burford WI (FaBWI)	Second Tuesday of every month	Burford Baptist Church Hall	Jennie Craven 07710 103015 thefabwi@oxfordshirewi.co.uk
Fulbrook Coffee am	Every 3rd Thursday	Fulbrook Meeting Place 10.30 - 12	Lyn Bibbings 823640
Fulbrook Fitness Group	Thursday (wef Sept 2021)	Fulbrook Meeting Place 9am	Pat Ferrett 822892
Horticultural Association	Fourth Thursday	Bowls Club - times vary	Janet Copley 01451 844210
North Cotswold Arts Assoc.	Every 2nd Wednesday	Warwick Hall	2-4pm
Pickleball - fun, social sport	Mon 11-1pm, Thu 10-12pm, Fri 8-10pm	Charlbury Community Centre	Vijay 01993 891 043 or vijaysmobile@gmail.com
Pilates Class	Wednesdays 10.00am	Burford Baptist Church	Elizabeth Jarvis cotswoldpilates123@gmail.com
Rhyme Time	Friday 9.15-10.00 am Term Times	Burford Library (for under 5's)	Carol-Amy Holdcroft 823377
Rock-a-Tots	Tuesday during Term Time	Warwick Hall	9.45 - 11.15 www.burfordchurch.org/rockatots
Rotary Burford & Kingham	Monday	The Burford Golf Club	John Smith 07717 883182
Signpost - Coffee and Help	Every Wednesday in term time.	The Warwick Hall, Burford 10.00 - 12 midday	Opportunity to raise worries confidentially
Scouts	Thursday (term time)	Scout Hut 6 - 8pm	Alex Gill 07762161769 burfordscouts@gmail.com
Scrabble	1st Tuesday of each month	Burford Library (free soft drinks)	7pm
Soup & Pudding Club (currently suspended)	Every 2nd Tuesday	Baptist Church, Witney Street	Gill Crippen 07967 362885 or 07793 012215
The Arts Society Cotswolds	2nd Wed (not July/Aug)	Warwick Hall 11.00	publicity@theartsocietycotswolds.org.uk
The Wychwood Lodge of Freemasons	3rd Thursday Sept-April	The Masonic Hall 31 Sheep Street	Mike 868302 / Allan 822240 wychwood988@outlook.com
Time Out	Monday 11.00am - 3pm lunch and afternoon tea	Warwick Hall inc games, bingo, singing, talks	John Harrington 822451 or Sue Sheppard 824729

USEFUL CONTACTS + INFORMATION

Please check hours of opening which are subject to change

Burford Recreation Pavilion (Children's Events)	01993 823647
Burford Pre School	01993 824031
Burford School	01993 823303
Burford Primary School	01993 822159
Burford Surgery www.burfordsurgery.co.uk	01993 822176
Burford Tolsey Museum Open seven days a week April to October www.burfordtolsey.org	01993 823647
Burford Town Council Tolsey office open Monday, Wednesday and Friday between 9.00 am and 11.30 am	01993 823647
Email town.clerk@burford-tc.gov.uk www.burford-tc.gov.uk	
Carterton Health Centre NHS www.nhs.uk	01993 841718 111
Centre for Carers in Oxfordshire www.oxoncarers.org.uk	01295 264545
Chemist Reavley's	01993 823144
Chipping Norton Veterinary Hospital Burford Branch	01608 642547
Churches Anglican St John the Baptist Roman Catholic Church of SS John Fisher and Thomas More Baptist Church Friends Meeting House	01993 823788 01993 823219 07967 362885 01993 875214
Citizens Advice Bureau Email admin@cawo.org.uk	0808 2787908
Community Transport Volunteer Link-Up Oxfordshire Comet Emergency Services Police – non essential	01993 776277 01865 323201 101
Environment Agency Floodline Emergency	0845 988118 0800 807060
<div><p><i>Please let us know if any details need amending.</i></p><p>editor@thebridgeburford.co.uk</p></div>	

Hall Bookings Baptist Church gill.crippen@googlemail.com Burford Town Bowls Club Fulbrook Meeting Place Taynton Village Hall - Lexi Young Warwick Hall Bookings and Information bookings@burfordchurch.org.uk	01993 822330 TBA 07909 913994
Library Tuesday 13.00 - 18.00 Thursday 10.00 - 13.00 Friday 10.00 - 13.00 and 14.00 - 17.30 Saturday 09.00 - 13.00 www.oxfordshire.gov.uk/burfordlibrary	01993 823377
Member of Parliament Robert Courts robert@robertcourts.co.uk	01993 702302
Oxfordshire County Council General Enquiries Highways Faulty Street Lights www.oxfordshire.gov.uk Oxfordshire County Councillor Nicholas Field-Johnson	01865 815573 08453 101111 0800 317802
Post Office stephencolter@aol.com	01993 878309 01993 822174
Recycling Centre Dix Pit, Lynch Hill, Stanton Harcourt Open 7 days a week 8am - 5pm Thursday late night until 8pm Closed Christmas Day and New Year's Day	
Southern Electric (Freephone) Thames Water	08000 727282 0800 3169800
Travel Rail Enquiries Public Transport Enquiries	08457 484950 08712 002233
West Oxfordshire District Council General Enquiries Out of Hours www.westoxon.gov.uk	01993 861000 01993 705056
West Oxfordshire District Councillor Hugo Ashton	07712 490517
Witney Hospital Minor Injuries Open 10.00am – 10.30pm daily Last Patient seen at 10pm	01865 903841
Witney Police Station, No front counter www.thamesvalleypolice.uk	

CHURCH SERVICES

BURFORD BENEFICE

St John the Baptist, Burford

3 March	
Benefice Holy Communion (CW)	9.30am
Morning Service	11.00am
Lent Course	7.15pm

10 March	
Choral Matins (BCP)	9.30am
Holy Communion (CW)	11.00am
Lent Course	7.15pm

17 March	
Holy Communion (CW)	9.30am
Morning Service	11.00am
Lent Course	7.15pm

24 March Palm Sunday	
Morning Prayer (CW)	9.30am
Morning Service	11.00am
Lent Course	7.15pm

28 March Maundy Thursday	
Holy Communion (CW)	7.00pm
29 March Good Friday	
All Age Service	11.00am

31 March Easter Sunday	
Holy Communion (BCP)	8.00am
All Age followed by Communion	11.00am

Every Wednesday at 10.30am we have Holy Communion Service followed by Coffee & Company in the Warwick Hall

St James the Great, Fulbrook

10 March	
Morning Prayer (CW)	9.30am

17 March	
Matins (BCP)	9.30am

24 March	
Holy Communion (BCP)	9.30am

31 March Easter Sunday	
Holy Communion (CW)	9.30am

St John the Evangelist, Taynton

17 March	
Evening Prayer (BCP)	6.00pm

31 March Easter Sunday	
Holy Communion (CW)	9.30am

St Nicholas, Asthall

10 March	
Evening Prayer (BCP)	6.00pm

24 March	
Evening Prayer (BCP)	6.00pm

31 March Easter Sunday	
Holy Communion (BCP)	8.00am

St Mary, Swinbrook

3 March	
Holy Communion (CW)	11.00am

10 March	
Morning Service	11.00am

17 March	
Morning Service	11.00am

24 March	
Morning Service	11.00am

29 March Good Friday	
Meditation	12.00pm

31 March Easter Sunday	
Family Holy Communion	11.00am
Easter Sunday Evening Prayer (BCP)	6.00pm

St Oswald, Widford

No service this month

9.30am & 11.00am services in Burford are also live streamed. Swinbrook Service are available to catch up on Monday. These can all be found on our website or YouTube Channel.

ST JOHN FISHER AND ST THOMAS MORE

Services in March-

Sunday Mass: 9.30 am
Weekday Masses:
Tuesday - 10.00 am
Thursday - 10.00 am
For Easter services and other updates please see catholicchurchburford.org.uk or the church noticeboard for details.
Dan Boyle

BURFORD QUAKER MEETING

Pytts Lane, Meeting for Worship every Sunday at 11.00 a.m.
Myra Ford 01451 810484, or Graham Hadley 01993 875214

BURFORD BAPTIST CHURCH

Welcome to Burford Baptist. It's now a lovely warm space with a new heating system in place. We want the community to come and use our facilities and we are happy to negotiate rates for hire depending on the event.

We have a growing number of regular users including FAB WI meeting on the second Tuesday evening of the month and pilates meeting every Wednesday @ 10am. Both would welcome new people to join them at BBC.

Do get in touch.
Gill Crippen

SIGNPOST

Come and chat to someone over a cup of coffee about a matter you are struggling with. A team of volunteers from Burford Church will be available to listen and do their best to help.

All matters will be dealt with confidentially.
The Warwick Hall, Burford
Wednesdays 10am - 12 noon term time only
Tarnia Usher

A service of Choral Matins takes place at St John the Baptist Church at 9.30am on the second Sunday of each month. All are welcome.

DIRECTORY OF LOCAL BUSINESSES & SERVICES

Company Name	Business Type	Phone
Antiques @ The George	Award winning, friendly antiques centre	01993 823319
CJD Architects	Chartered Architects	01993 823646
Hickman Brothers Landscapes Ltd	Garden Design and Construction, Landscape and Garden Supplies www.hickmanlandscapes.co.uk	01993 822226
Jenny Smith	Spanish & French tutor. Building confidence GCSE/KS2. Experience in schools; DBS check held.	07908 602547
Kendall & Davies Solicitors	Expert, friendly, client-focused legal services with offices in Burford. www.kendallanddavies.co.uk	01993 822025
Tayler and Fletcher	Estate Agents / Chartered Surveyors / Fine Art Auctioneers and Valuers / Commercial Agents / Rural Specialists	01993 220579
Mallams Auctioneers Ltd	Auctioneers and Valuers	01242 235712
Pauline Carter BA AmusLCM CTABRSM MISM	Piano Teacher	01993 774568
Peter Garratt	Painter and Decorator	01451 810376 07788 896496
StayCotswold	Holiday/Short Lets, Relocation, Corporate Stays, Property Search, Sales & Lettings. www.staycotswold.com	01993 259444
Thomas Ellis-Rees	Clock & Barometer repairs. tellisrees@gmail.com	01993 822132
Vick's Byway Garage	Bushey Ground, Minster Lovell,Witney,OX29 0SW. MOTs by arrangement	01993 823142
VJ Hancock & Co Ltd	Certified Accountants / Chartered Tax Advisers www.vjhaccountancy.co.uk	01993 822817
Lionheart Later Life Planning and Probate	Wills – Lasting Powers of Attorney – Trusts and their registration – Fixed fee Probate – Equity Release and Free Financial Advice. www.lionheartlaterlifeplanning.co.uk	07769 730616.
EiWell	Physiotherapy, Occupational Therapy, Nutrition Helping people stay independent as they get older	01865 238185
Burford Foot Clinic	Chiropody Castles Yard, Pytts Lane, OX18 4SJ	01993 200980
Adam Carter Chauffeur Services	Local Private Hire Chauffeur www.adamcarterchauffeurservices.co.uk	07920 135157
Tony Williams	Welding/Brazing/Soldering & Metalwork Home/Garden & General repairs & alterations	07722334696
Fairways Cotswold Explorer	for all your Airport & Cruise transfers	01993823152 07751472125
The Stone Gallery	Makers of Gold and Silver Jewellery, agent for Georg Jensen. Paperweights & Pictures. www.stonegallery.co.uk	01993 823302
NFU Mutual	Insurance Pensions Investments - Call your local Witney agency	01993 776716
Patti Good	Therapist, Teacher & Healer Free Online Guided Meditation Classes www.pattigood.com	07880 998568
Radnor Martin	Estate agents covering Burford and the surrounding villages	01993 765115
Mel's hair at home	I can visit you or I have a small salon at my home on the green in Leafield.	07817726218
TC Garden Services	Gardening, Landscaping, Patios, Decking, Fencing & Gates, Raised Beds. Contact Tony for a free quotation. www.tcgs.uk	07771 888304
Samantha James	Regarded organic - Private Hairstylist - Experienced. Email - samloujam@googlemail.com	07772 601495
J Coles Plumbing & Heating	For all your plumbing emergencies/needs and bathroom refurbishments.	07947693427
Oxford Construction	Building, Groundworks and Project Management Services Email; enquiries@oxfordconstruction.co.uk	01865 922001
Grimebusters	Dirty carpets? Upholstery? Call Grimebusters - your local professional cleaners. Competitive rates. Free estimates.	01993 868924

PHYSIOTHERAPY
OSTEOPATHY
SPORTS MASSAGE

BURFORD CLINIC

Our Services:

- ✓ Back and neck pain.
- ✓ Muscle and joint pain weakness.
- ✓ Post operative Rehab
- ✓ Ultrasound - Shockwave Therapy - Dry Needling Management
- ✓ Maintain function at home Home and Care Home Visits
- ✓ Stroke and Parkinson Physio

CONTACT US
www.cotswoldphysiorooms.co.uk
Booking Team 01993 444118

FOR YOUR LOCAL GENERAL BUILDING REQUIREMENTS

GENERAL BUILDER
RENOVATIONS
EXTENSIONS
ALTERATIONS
IVOR LAVERS

SPECIALIST IN DRY STONE WALLING
BRICKWORK - BLOCKWORK
PLASTERING - ROOF REPAIRS
INTERNAL AND EXTERNAL PAINTWORK - LANDSCAPING
TILING - CARPENTRY

BASED IN BRIZE NORTON
HIGHLY RECOMMENDED
REFERENCES AVAILABLE
07866 748481

BP

BROUGHTON POGGS BUSINESS PARK

SELF-STORAGE FACILITY

COTSWOLD SECURE STORAGE

COTSWOLD CAR STORAGE

www.broughton-poggs.com **01367 218 991**

Open 7 Days A Week
A Huge Charity Shop In Oxford

At Emmaus Oxford you will find a large range of furniture, household goods, electricals, clothing and bric-a-brac at the lowest prices

Visit: 242 Barns Road, Oxford OX4 3RQ
Tel: 01865 763698
Email: furniture@emmausoxford.org

Free Collection of your unwanted household goods

emmaus Oxford
Opening times: Mon - Sat 9:30 - 5pm Sun 10:00 - 4pm

BAKERY ON THE HILL

Why not meet friends or bring family to enjoy our peaceful courtyard garden away from the hustle & bustle of the High Street?

Join us for:

- Breakfast**
Scrambled Eggs, Bacon or Sausage Baps, Granola.
- Sandwiches**
Made to order on our freshly baked Artisan Bread.
- Homemade soup**
On Toasts, bakery-made Quiche & Salad.
- Cream Tea**
With our all butter scones.

Baking Fresh Artisan Bread

Open daily from 8am - 5pm

Bakery On The Hill, 53 High Street, Burford, OX18 4QA
T: 01993 823898 E: info@bakeryonthehill.uk

Shaun Guard
TV & WIFI SERVICES

- **Aerials** - supplied & repaired also poor reception solved
- **Satellite** - Sky Q dish upgrades, discreet dish installation also foreign TV
- **Internet** - blackspots cured, data cables to your TVs / computer
- **TVs** - hung on your wall or set up and tuned
- **CCTV & Door Entry** - domestic installations

OXFORD AERIALS

www.oxfordaerials.co.uk
Call Witney 01993 608118

Mallams
1788

MODERN ART + DESIGN

NO APPOINTMENT NECESSARY

Valuation Morning
Friday 8th March 2024
10.00am – 12.30pm
Warwick Hall, Burford OX18 4RY

Our specialists will be available to provide complimentary valuations, with a view to selling at auction.
oxford@mallams.co.uk or 01865 241358
www.mallams.co.uk

AUCTIONEERS AND VALUERS SINCE 1788

Witney Framing

Bringing Your Pictures to Life

Picture Framing - Sports Framing - Military Framing - Textile Framing
Readymade Frames - Glass Replacement - Mount Cutting - Made to Measure



11 Langdale Court - Witney - OX28 6FG Tel: 01993 - 862799 - www.witneyframing.co.uk

SOTA Gallery



SOTA Gallery - 11 Langdale Court - Witney - OX28 6FG
Tel: 01993 862 799 - www.sotagallery@gmail.com

Turnkey Construction

tcladmin@turnkeyconstruction.co.uk

www.turnkeyconstruction.co.uk

01453 834450



EXTENSIONS ☒ RENOVATIONS ☒ ALTERATIONS ☒ JOINERY ☒

Turnkey Construction Developments Ltd is a Gloucestershire based building contractor, established for 29 years. We work closely with Clients, Architects, and suppliers to deliver bespoke, first-class projects including extensions, refurbishment, and restoration of new and listed buildings both residential and commercial.



Located in the heart of the Cotswolds, **Stow Veterinary Surgeons** are dedicated to treating the small animals of the surrounding area. The practice is run from the main premises in **Stow-on-the-Wold** and also has branch surgeries at **Burford**, **Milton-under-Wychwood**, **Moreton-in-Marsh** and **Northleach**.

We offer **emergency out of hours care 24-hours a day, 365 days of the year**. Our aim is to provide gold standard veterinary care to both animals and their owners. We offer same day appointments and we are always happy to register new clients!

If you have any queries regarding the services we offer or if you would like to book an appointment then please don't hesitate to contact us.



Telephone: 01451 830620

www.stowvets.co.uk

MOSSINATOR®
ROOF CLEANING SYSTEMS

Moss Removal & Roof Cleaning
Brickwork Cleaning
Patio & Driveway Cleaning
Solar Panel & Skylight Cleaning
Installation of Bird Protection

Enhance the appearance of your property with our quality assured, friendly service

01865 362797 - info@mossinator.co.uk

ART Workshops

with professional tutors at Windrush House studio

www.windrushartcourses.co.uk
Windrush House, Windrush, OX18 4TU
E: windrush.artcourses@yahoo.com
T: 01451 844425

Courses include home-made lunch

Water-mixable oils

PAUL WEAVER 20th March 10am - 4pm

Going Wild in watercolour

JAKE WINKLE 19th June 10am - 4pm

HARRY JAMES
Gardens & Landscapes

Mobile: 07985 434080

email: info@harryjamesgardens.co.uk

www.harryjamesgardens.co.uk

Pool House, Westhall Hill, Fulbrook OX18 4BJ



Architectural practice which combines sensitive, imaginative building and garden design with technical expertise and project management skills, all tailored to suit client requirements.

We operate within The Cotswolds, Woodstock and Oxford, and have a positive relationship with Local Authorities. Please call for an initial, no-obligation discussion and site visit.

Panton Architectural Design, Wood Farm Studio, Woodleys, Woodstock OX20 1HN

t: 01993 810704 e: post@pantondesign.info w: pantondesign.info



—Seth—
DIXON
• DESIGN & BUILD •

Seth Dixon - your Planning, Building & Renovation Partner

From a simple extension, delicate renovation to a new build

Applying traditional styles within modern day building techniques

Individual bespoke ideas and plans

Vigorous cost management

Call for a no obligation chat to discuss your plans

Making your dreams a reality

07793 74 73 72
info@sdd-b.com www.sethddb.com

AUDRI SCHAAY

Clinical and Sports
Massage

Studio Pilates

BURFORD

OXFORD

Summertown Clinic
Clinical Massage Oxford

07741182858
audri@audrischaay.com

Mindful touch and movement for myofascial pain


**THE LIFE
ADMIN GROUP**

Solving problems for businesses
and private households in
The Cotswolds

www.thelifeadmingroup.com
07594480048

STOW PROJECT



HANDCRAFTED - BESPOKE

 **BURFORD**
KITCHENS AND INTERIORS

**KITCHENS
BEDROOMS
BATHROOMS**

AFFORDABLE QUALITY

DESIGNER INSPIRED STUDIO
AT

150 The Hill
Burford OX18 4QU

OPEN 7 DAYS

Appointments please
01993 824690

**DESIGNED - CRAFTED
COMPLETE INSTALLATION**

www.burfordkitchens.co.uk

 **the
Cotswold
Lighting
company**

Electrical Contractors

Domestic . Commercial . Industrial . Agricultural

The Cotswold Lighting Company covers **ALL**
aspects of **electrical design and installation**,
from extra sockets to complete re-wires.

We also specialise in creating unique lighting
effects for your home and garden.

visit www.cotswold-lighting.com for more
information. No job is ever too big or small!

FREE estimates! Contact us today on
01451 810 710 or 07931 591 193

Alternatively email us at contact@cotswold-lighting.com

 **NICEIC**
APPROVED
CONTRACTOR

 **NICEIC**
DOMESTIC
INSTALLER

 **Your Local
Electrician**
established in the Cotswolds since 2006

EST. IN COTSWOLDS SINCE 2006 / FULL PART P REGISTERED ELECTRICIANS

Barguss
CONSTRUCTION LTD

Historic and listed building specialists

Restoration • Extensions • Decorating • Refurbishment

The Old Bell Foundry
45 Witney Street
Burford
Oxfordshire
OX18 4RX

 **LABC** Regional Winner

Tel: 01993 824703
email: office@barguss.co.uk
web: www.barguss.co.uk

 **JAG
TIMBER**

FIREWOOD

Quality Seasoned Hardwood Logs
Softwood also available
Kindling & Stacking Service
Order Online @ www.jagtimber.co.uk
office@jagtimber.co.uk
01993 868001

**E TAYLOR & SON
FUNERAL DIRECTORS**

Private funeral home
Memorials supplied and renovated
Here to help 24 hours per day

01993 842421

Corbett Road, Carterton, OX18 3LG



REAVLEY
— CHEMIST · BURFORD —

England's oldest pharmacy

- NHS & Private Prescriptions
- Professional Lifestyle & Healthcare Advice
- Wide Range of over the Counter Medicines
- Stockists of Premium Beauty Brands
- Private Consultations
- Flu & Covid Vaccinations (Seasonal)
- Traditional Remedies
- Yellow Fever Centre
- Travel Clinic Consultations & Vaccinations
- Delivery Service Available

Open 6 days a week | Monday – Friday 9am – 6pm | Saturday 9am – 5pm
Reavley Chemist, 124 High St, Burford OX18 4QR | 01993 823144 | info@reavley.co.uk | www.reavley.co.uk

NICHOLSONS

Plants Forestry Landscapes

OPEN TO THE PUBLIC

Here at Nicholson's, we aim to offer you much more than your typical plant nursery experience.

Nicholson's Plants

Expert advice & guidance | Hedging & screening | Colourful herbaceous
Ornamental and edible fruit trees | David Austin roses

Rosara - Outdoor style for your garden

Furniture sets | Planters | Kadais | Lighting

The Yurt - A unique dining experience

Breakfast | Lunch | Innovative menus | Locally sourced food
All dietary requirements welcome
Tuesday to Saturday

Walk-ins are welcome at the Yurt but to secure a table and time,
please book via our website.



www.nicholsonsgb.com

The Park, North Aston, OX25 6HL | 01869 340342



RADNOR MARTIN

your property buying, selling & search agency

Unit 8 Tannery Yard, Witney Street, Burford, OX18 4DQ
office@radnormartin.com www.radnormartin.com 01993 765115

G&O ENGINEERS

Gas & Oil Heating Services Ltd



AGA / RAYBURN

Boiler Servicing & Maintenance Specialists

Fuel Types: Gas • Oil • LPG • Biomass
From Complete Installations to Minor Repairs

*Call us today for a friendly, efficient
service where quality counts*

01993 771754

www.gandoengineers.co.uk

1 Coiswold Business Park, Range Road, Witney OX290YB



LENTHALL CONCERTS

BACH FINZI ELGAR ENESCO FAURE CORELLI MOZART VIVALDI



Join us for the final concert of the season.

Sound the Trumpet!

Don't miss this varied and scintillating programme from
supreme expert, Paul Archibald,
accompanied by Helen Reid on piano.

Wednesday 27 March 7.00pm Tickets £20

Venue: Burford School www.lenthallconcerts.org.uk
www.ticketsource.co.uk/the-lenthall-concert-society

ideal carehomes

Brize Meadow Lodge

Luxury Care Home



ALL INCLUSIVE FEE

Supporting You with Person-Centred Care

“Can’t fault anything about the care home
and staff. They are all so friendly and caring.
Mum is looked after really well”

Daughter of Resident, Carehome.co.uk review

- ✓ Residential and Dementia Care
- ✓ Purpose Built Home
- ✓ Person-Centred Care
- ✓ All Inclusive Fee
- ✓ Daily Activities
- ✓ Nutritious Food
- ✓ Couples Welcome
- ✓ EPC “A” Rating

01993 323 313

Miles Drive, Brize Norton, OX18 1NZ
brizemeadow.lodge@idealcarehomes.co.uk | idealcarehomes.co.uk

