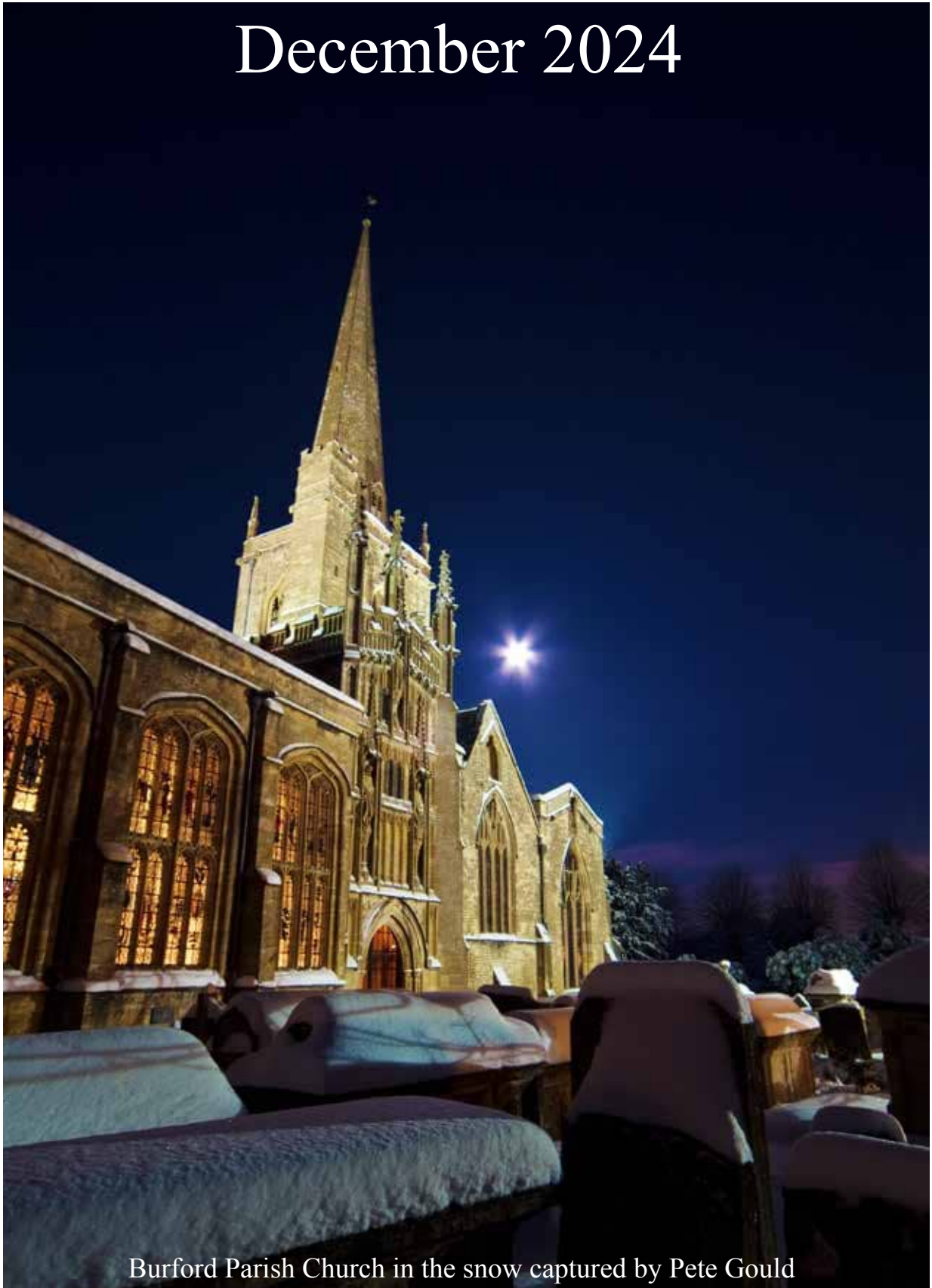


# THE BRIDGE

December 2024



Burford Parish Church in the snow captured by Pete Gould

This monthly magazine covers people and events in our area of the Cotswolds, and is delivered free of charge to residences and businesses in Aldsworth, Asthall, Asthall Leigh, the Barringtons, Bradwell Village, Burford, Field Assarts, Fordwells, Fulbrook, Holwell, Northleach, Sherborne, Shilton, Signet, Swinbrook, Taynton, Upton, Westwell, Widford and Windrush with a wider national and international readership.

*Volume 15, Number 11, £1.50*

# Lie down & Listen™

## Personalised Composition Gift

As featured in *The Financial Times HTSI*,  
*Evening Standard Magazine*, *BBC R4*,  
*Cotswolds Life etc.*



Imagine capturing the essence of your loved ones in music. If you were the film director of their life, what would their film score sound like?

Experience the joy of gifting a musical portrait in a unique piano composition created and performed by pianist, composer and founder of Lie Down and Listen **Christina McMaster** and recorded to professional studio quality.

### Presentation Options

- Bring to life with a live concert experience
- Enhance with a beautiful hand written manuscript and personal dedication

### Get in touch

Email: [info@liedownandlisten.com](mailto:info@liedownandlisten.com)

[www.liedownandlisten.com](http://www.liedownandlisten.com)



*Cat Sutherland* – Portrait Painter

Mobile: 07989 475933

Email: [sutherlandcat@hotmail.com](mailto:sutherlandcat@hotmail.com)

Instagram: @catsutherlandart

Facebook: Cat Sutherland Painter

[www.catsutherlandportraits.com](http://www.catsutherlandportraits.com)

**Taking Christmas Commissions NOW!!**



ROOMS AVAILABLE TO HIRE

### BURFORD QUAKER MEETING HOUSE

Quiet central location peaceful period premises with kitchen and garden

#### IDEALLY SUITED FOR:-

personal consultations, writing studios,  
studios, circles, group meetings,  
musical activities

#### Contact:

igelraithwaite@el  
ue@shnton@el  
mail@asco@mill@aol.com

01993 220 579

[burford@taylerandfletcher.co.uk](mailto:burford@taylerandfletcher.co.uk)

Tayler & Fletcher



**SOLD**



**SOLD**



**SOLD**



James Skinner  
Residential Sales Manager



Alison Denny  
Residential Sales



## Celebrating 5 years in Burford

Providence House, 49 High Street, Burford, Oxfordshire, OX18 4QA

## EDITORS' NOTES

### It's that time again

The clocks have gone back. The last Halloween spooks have been chased away. Guy Fawkes has been incinerated. The leaves have fallen from the trees. The autumn rubeckias and heleniums have faded away. Mince pies and crackers have been on sale since October and Aldi is selling "Chreaster eggs" (yuk). The first carol service is on 1 December, much to the irritation of the Society for the Protection of Advent Sunday. Yes, that big event has approached ie the day when the final edition of The Bridge for 2024 appears and the editors can go into hibernation for a few blessed weeks.

So it's time to say thank you to all those who have helped produce this magazine over the year: in particular Karl Morris, our brilliant advertising manager; Judy Cumming and Ivan and June Hall for their eagle-eyed checking of the proofs; Ruth Reavley, our assiduous roving reporter, for providing many interesting articles; Clendon Dawkes for organising our distribution and for accounts liaison; Pete Freeman and Reg Marshall for IT support; and above all our loyal distributors who have been responsible for ensuring that the last eleven editions have popped through your letter box. They say it takes a village to raise a child and it certainly takes a community effort to produce The Bridge.

NB: There will be no edition of The Bridge in January so please don't send us any articles or letters for that month. You can bridge the gap, as it were, by registering on our website to receive news updates or by following us on X/Twitter. In the meantime we wish all our readers a Merry Christmas and a Happy New Year. We shall be back round about Candlemas.

### So Farewell

We have a useful arrangement with our neighbouring publication The Wychwood under which we occasionally share articles with each other. Bob Forster, who lives in Shipton-under-Wychwood but is well known as a member of Burford Parish Church, is handing on his green eyeshade after eight years as editor of The Wychwood. Thank you, Bob, for your hard work and your co-operation and we wish you a happy retirement, rest, leisure, repose or whatever the correct word is.

\*\*\*\*\*

## JUST TIME TO SEE THESE CHRISTMAS EVENTS IN BURFORD

Friday 29 November  
Christmas market in the parish church  
6.00-9.00pm.

Saturday 30  
November Christmas Lights Switch on with Father Christmas and carol singing -  
countdown to switch on at 4.00pm.

Sunday 1 December  
Civic Service and reception at the parish church 3.30pm.



## BURFORD TOWN COUNCIL REPORT

Our Civic Service for Burford residents on Sunday 1 December at 3.30pm will be a more formal event than usual, as we are delighted to welcome the Lord Lieutenant of Oxfordshire, Marjorie Glasgow BEM. She is the representative of the King.

There will be a formal procession with the Large Mace carried by the Mace Bearer leading into the service, and again at the end from the church to the Warwick Hall.

This will be followed by the reception in the Warwick Hall where you can meet the Lord Lieutenant, our deputy Lord Lieutenant, the High Sheriff of Oxfordshire, the chair of Oxfordshire County, a number of other Oxfordshire mayors and chairs of councils and our town councillors who will all be attending.

We have not carried out such a formal civic event for some years, so it is a chance to experience a formal Civic Service if you wish.

If you do attend, please could you be seated in the church by 3.20pm?

You may see more information about the Oxfordshire Lieutenancy at <https://www.oxfordshire-lieutenancy.org>



The 15th annual Burford 5 November bonfire and fireworks on Westfield were again a great event, organised by Gabi Schotten. The fireworks were as good as usual, if not better, set off again by Jason and Michael. I cannot thank everyone individually, but to name I hope most, and you know who you are, Gabi, Manfred, Sarah, John and Jane for the barbecue, Jason and Michael, Prince of Burford Hotel (Butcombe Brewing Co) for the bar, the pre-school for the candyfloss, Sue for the soup, Sarah and Jane for the mulled wine, which I have been told was quite strong, all our firefighters who built the bonfire and attended for our safety and carried out the collection, Phil for organising the electrics, our councillors who helped and marshalled the car parking, and the live band "Stocious" who entertained us over the evening. Thanks also to Hickman Brothers for the soil bags and forklift truck, to Smurfit Kappa for the pallets and David and Jack for setting up and clearing up.

We have now paid OCC for the Traffic Regulation Order to apply to restrict the length of coaches accessing Priory Lane to 12 metres, to re-mark one bay as turning only, and to install a zebra crossing on The Hill opposite the Catholic Church. There will be a consultation starting in December, and provided that is acceptable, I hope the restriction can be in place before next summer. We will need to raise funds to pay for the zebra crossing.

Finally, I hope to meet many of you at the Civic Service at St John the Baptist Church on Sunday 1 December at 3.30pm and at the reception in the Warwick Hall afterwards where drinks and a finger food buffet will be served. All Burford residents are welcome.

May I also wish everyone a happy Christmas season, and a healthy and peaceful and prosperous 2025.

*Peter Higgs - Mayor*

[peter.higgs@burford-tc.gov.uk](mailto:peter.higgs@burford-tc.gov.uk)

## ADAM THORNTON - TRACTOR MAN!

Thanks to Adam Thornton for helping volunteers with clearing the brush around the recreation ground for the Burford Bonfire.

*Jack Buckland*



## AND ANOTHER HERO

David Buckland - who deserves recognition for his annual contribution to the Burford Bonfire night - and a huge number of other local achievements.

*Steven Blantz*



## BONFIRE NIGHT PHOTOS KINDLY PROVIDED BY DEREK COTTERELL





The October harvest festival meeting was great fun for FaB WI. One member even dressed up as a pumpkin as well as some very different-looking pumpkin creative entries to the autumn.



For Remembrance Day services, two of our members, Corrine Ash and Elayne Colledge from Cotswolds Gate, laid a wreath at Burford together. Angela Weller laid a wreath at the Fulbrook service.

There are a lot of events for WI members in Oxfordshire, with two of our members attending the very popular Technique Taster Day making Christmas decorations. There will be six wonderful Christmas crafts on offer, and we'll choose four to make and take home. They range from a Christmas gnome, a Victorian bauble, Scandi stars, a beaded snowflake and decorated pinecone. It's a bit like speed dating but instead speed crafting! Our Oxfordshire events are subsidised so we are paying £30 as members to do four crafts in a day.

Also, during November there was a very interesting talk by Professor Bob Evans FBA, Regius Professor of History Emeritus, who has been chair of the Oxfordshire Blue Plaques Board since 2013. He has been associated with just over half of the unveilings which have taken place since the scheme began in 2001. In that whole period more than 130 plaques have been installed. They commemorate notable people, institutions and events in the history of the county. The talk explained the background to this kind of memorialisation, which began in Victorian London, and the way our local scheme operates.

We will be finishing our year with a fabulous and fun festive meeting on Tuesday 10 December. Festive food, mulled wine as well as all of us making a Christmas lantern for display at the Christmas table will put us all in the mood for Christmas.

We are always keen to welcome new members and guests are always very welcome to any of our meetings for a suggested donation of £5. So, we look forward to welcoming any of you interested.

The FaB WI meets on the second Tuesday of each month in the Baptist Chapel in Witney Street at 7.30 pm. For further information please visit our website [thefabwi.org.uk](http://thefabwi.org.uk) or contact our president, Jennie Craven, on [thefabwi@oxfordshirewi.co.uk](mailto:thefabwi@oxfordshirewi.co.uk) or mobile 07710 103015.  
*Jennie Craven*



### GOLDEN OPPORTUNITY

Building on the success of this year's Burford Festival, we wish to strengthen our organising committee in preparing for the next Festival in June 2026.

This is a great opportunity to join our enthusiastic and dedicated team early enough to be part of the initial planning of the Festival, and to use your skills and experience in a variety of ways. We are particularly looking to fill marketing and operational roles, but we also need your help in a variety of other roles.

If you feel you have what it takes and want to seize this unique opportunity of not only making a difference in planning and executing the next Festival, but also having fun along the way, we would love to hear from you.

Whether you are new to Burford or are already familiar with our popular biennial Festival, please get in touch.

The Festival is a real community event where Burford and the surrounding area truly come together to enjoy quality events, including music, theatre, talks and art not only by locals but also by well-known national and international names.

Please apply in the first instance to Dorrit Marshall, [trustees@burfordfestival.org](mailto:trustees@burfordfestival.org), with your name, address and contact telephone number, and let us know if you have a particular interest or skill or whether you just want to part of our amazing team.

Don't wait, apply now!

*Deborah Knight, Chairman of the Trustees of the Burford Festival*

\*\*\*\*\*

### BURFORD & KINGHAM ROTARY CLUB

In November we planted another 4000 purple crocuses on the verges of Burford Hill. This is our fifth year of planting crocuses in Burford. The purple crocus is the emblem of Rotary's World Polio Day (24 October). Purple is used because that is the colour of ink used to mark a finger of each child receiving the polio vaccine. Rotary began vaccinating against polio in 1989 in the Philippines, soon

extending the work across the world and, in later years, with help later from WHO and the Gates Foundation. In January to August 2024 there have been 14 cases of wild-type polio in the world, with cases recently being identified in Gaza.

If you would like more information about the Rotary Club of Burford and Kingham or would like to help with one of our events or to chat with our secretary about membership, you can contact John Smith by email: [john@jasss.co.uk](mailto:john@jasss.co.uk)  
*Stuart Jackson*



### THE ARTS SOCIETY COTSWOLDS

Lecture on Wednesday 11 December

#### The Goose is Getting Fat: A History of Christmas Traditions

What's behind the wassail and why do we kiss under mistletoe and let loose women into York at Christmas? Every family hones its own traditions, but mainly they are based on a central theme: filling our houses with greenery and bling, sending cards, eating too much, wearing a silly hat, singing songs and playing games that we don't bother with for the rest of the year. How has all this come about? Some are based on pagan festivities that either honoured spirits or simply helped to break up the winter. Others, such as advent calendars and crackers, are much more recent.



This lecture cannot possibly cover all of our traditions, but it gives a glimpse behind the scenes to see our ancestors preparing for the day, stirring-up puddings and dragging yule logs into the house on Christmas Eve and the rituals that went with it. We see Lords of Misrule lording it over rowdy parties, how pantomime developed and how a few carollers sent out a coded message.

Imogen Corrigan, after nearly 20 years in the British army, went to the University of Kent to study Anglo-Saxon and Medieval History and Art, graduating with first class honours, followed by an MPhil from the University of Birmingham. She works as a freelance lecturer across Britain and Europe as well as lecturing on small cruise ships and running study tours and courses on land. She is the author of *Stone on Stone: the Men Who Built the Cathedrals*, published 2019. She is a Freeman of the City of London, and a member of the Company of Communicators\*.

This hybrid lecture will be held at the Warwick Hall, Church Green, Burford, OX18 4RZ at 11am and via Zoom. Please be seated by 10.50 for notices of upcoming events. Numbers are no longer restricted but booking is recommended to reserve a place via our website (see below) Non-members are welcome (space permitting) at a charge of £10.

Lecture on Wednesday 8 January

#### Charles I: King and Collector

This lecture celebrates the 400th Anniversary of Charles I's accession to the throne in 1625. Charles I's obsession for collecting works of art began when as a 22-year-old prince he travelled to Spain and saw the magnificent collection of the Spanish king, Philip IV.

On becoming King in 1625 Charles purchased the fabulous collection of the Gonzaga Dukes of Mantua which included works by Titian, Raphael and Andrea Mantegna's astonishing series of paintings The Triumphs of Caesar.

Barbara Askew is an historian, a London Blue Badge Guide since 1988, a lecturer, examiner and course director on Blue Badge Guide training courses and an acknowledged expert on royalty and Windsor Castle. She is the only Blue Badge Guide accredited to guide the Albert Memorial and offers guided visits and walking tours linked to her lectures.

This hybrid lecture will be held at the Warwick Hall, Church Green, Burford, OX18 4RZ at 11am and via Zoom. Seating and booking arrangements are as for the December lecture.

Further information will be circulated via the newsletter and bookings can be made via the website (see below) or please call Lisa Etheridge on 01285 711805 for a booking form.

To learn more about The Arts Society Cotswolds and to see what lectures, Special Interest Days and other activities are planned, please log into the website:

[www.theartsocietycotswolds.org.uk](http://www.theartsocietycotswolds.org.uk)

Or contact Alison Morgans on 07771 817050

\*One of the newer Livery Companies, M'lud.

\*\*\*\*\*

### BURFORD & DISTRICT HORTICULTURAL ASSOCIATION

Our October meeting consisted of a visit from Julie Ritchie of Hoo House Nursery who brought along a wonderful variety of flowering herbaceous plants which were eagerly snapped up by the members. Julie spoke about plants for awkward corners, giving us much inspiration for those difficult spots along with a slide show to encourage us. We are now in possession of lists of so many plants I need a bigger garden! Hoo House Nursery is my go-to garden centre for the unusual, the best choice and best laid out plant centre. They also have a fabulous website, [hoohouse.co.uk](http://hoohouse.co.uk), which lists plants available. But I would recommend a visit, although it can be expensive, but of course you can always find room for just one more plant.



November's meeting is on Thursday 28 November (I hope this will be after the next copy of The Bridge is delivered) when the subject is "Time to plant roses" by Andrew Mikolajski. The last meeting of the year will be the Christmas one – mince pies and mulled wine – so I encourage all members to come along if only to find out about planting all those roses we ordered at our David Austin outing earlier in the year.

I'd like to say the garden is now quietly closing down for the winter but somehow, it's not quite like that, the leaves keep falling and the grass is still growing! Still, I'm sure a cold snap will come and we can then start looking forward to the first of the bulbs coming up and next season starting.

The committee and I would like to wish you all a Merry Christmas and happy (indoor!) gardening.

*Jan Cohen*





# BURFORD TOLSEY MUSEUM & ARCHIVE



A record number of Benefactors attended their 2024 Reception on 7 November at the Baptist Church, Burford. This annual get together at which Clendon Daukes, Chairman, updates everyone on progress made in the last 12 months and shares our future plans, was followed by celebrations to mark the launch of the first book produced by the BTMA's newly established, Tolsey Press, *Treasures of the Burford Tolley Museum*. This lavishly illustrated book, with 108 full colour pages, was extremely well received and thought to be a fascinating and entertaining read not only for Burford residents but also for anyone even with a passing interest in history. Multiple copies were bought by many to be used as original Christmas stocking fillers.

The book can be purchased direct from the museum, (which has now reverted to weekend openings 2-5 pm during November and December), or 24/7 via [www.burfordtolsey.org/shop](http://www.burfordtolsey.org/shop) (free delivery in Burford), alternatively from The Madhatter Bookshop and online suppliers.

The descriptions in the book were compiled by Chris Walker, a remarkable local historian. Throughout his life, Chris dedicated much of his time and energy to acquiring objects of local historical interest. It was a delight to him to be able to share his carefully collected treasures in the Tolsey Museum for all to appreciate and enjoy. As this book is dedicated to his memory the BTMA were delighted to welcome and present the first copies to his wife, Jenny, and to Chris and Jenny's family.

November also saw the last of the current programme of Tolsey Talks. They ended on a high note when many longstanding residents shared with each other their reminiscences of past life in Burford and in doing so enthralled the many relative newcomers to the town who were present. The programme for the 2025 talks will be announced in the new year.

*Peter Martin*

## EDITORIAL POLICY

*As is customary with publications, the decision of the editors on what can and cannot be published is final. In particular, they will edit or decline to publish anything which in their opinion includes personal attacks on any individual, is expressed in unduly partisan language or is offensive, in bad taste or potentially defamatory. Opinions expressed by contributors are entirely their own and the appearance of any letters or articles in The Bridge does not indicate that the editors agree with them. Items may also be edited and may be rejected. Where items or services are offered for sale, or advertised, the provider is responsible for ensuring that the goods or services are safe and of good quality. The editors may refuse to publish advertisements or other statements about unsuitable items or services. The Bridge does not accept responsibility for the accuracy of advertisements and does not endorse any goods or services which are advertised. All items submitted for inclusion must give the name and address of the writer and an email address or telephone number. By submitting any article, announcement, letter or advertisement to The Bridge you are deemed to have agreed to the above.*

*All advertisements in The Bridge are accepted subject to The Bridge Terms and Conditions of Advertising 2021 which can be viewed on our website [www.thebridgeburford.co.uk](http://www.thebridgeburford.co.uk).*

## WODC COUNCILLOR REPORT

We have a general consensus that there is a climate emergency.

The government says there is, OCC and WODC have declared climate emergencies and have built a response to the climate emergency into all their activities.

We are allowing land to be built over with solar panels (in suitable places!), and onshore wind farm applications will soon be arriving apace. This is all to generate zero-carbon emission electricity to power our economy and in particular the electric cars we are encouraged to buy and the electric heat pumps with which we are encouraged to replace our oil and gas boilers.

Perhaps then we should insist that all new houses are built to the highest energy efficiency standards and be equipped with solar panels to ensure that they are as near net-zero carbon in operation as possible. It's certainly feasible, and the slightly higher build cost is more than offset by the future savings in utility costs. (A net-zero build would be nice too, but that's a bit of a stretch at present.)

But bizarrely, building regulations do not insist on such a standard. Even the new regulations coming into force next year do not. The District's aspiration to set net-zero housing as the specification for the proposed Salt Cross garden village on the A40 opposite Eynsham was not permitted by the planning inspector. Thanks to court action by the campaigning group Rights Community Action, we are allowed to try again. However, we still have to stay within national policy limits and, as yet, the new government has not raised those limits sufficiently to permit a net-zero specification.

We are hoping for changes in government policy in the near future, but there is no clear commitment that this will happen. To press for change quickly, I and other councillors from WODC and elsewhere will shortly be attending a meeting with Lord Ravensdale, organised by the Town and Country Planning Association and Rights Community Action. Lord Ravensdale is not a member of the government, but is a crossbench member of the Environment and Climate Change Committee. The hope is that our message will get through to this committee and thence find its way into government policy.

Let's see what can be achieved over a cup of tea in the House of Lords!

*Hugo Ashton*  
District Councillor for Burford,  
Fulbrook and Taynton  
[hugo.ashton@westoxon.gov.uk](mailto:hugo.ashton@westoxon.gov.uk) or  
0771 2490517



## OCC COUNCILLOR REPORT

### Residents' Satisfaction Survey Results

The results of the OCC Residents' Satisfaction Survey have just been published. It shows disappointment in rural areas (West Oxfordshire 6%), while residents in the city of Oxford are more content.

Key points are:

Overall satisfaction with council below Local Government Association average

32% believes the council provides value for money

Oxford residents are far happier with the council than those in rural areas

57% of residents believe the council doesn't keep them well-informed

43% of residents are satisfied with council services (this is boosted by higher levels of satisfaction in Oxford)

Maintenance of roads is rated by 68% of residents as the council's most important service, but does not feature in the list of council priorities (see below)

Only 14% of residents are satisfied with the council's level of road maintenance

Road maintenance is far more important to residents than anything else (apart from in the city of Oxford)

The level of satisfaction with the local area as a place to live has declined from 84% in 2021 to 72% in 2024

Residents were asked to give feedback on the council's nine priorities, but they were given no opportunity to say that the priorities were wrong e.g. road maintenance should be a priority

OCC's no.1 priority is climate change, and in 2021 38% of residents agreed with this, but that has now fallen to 18%

The clear message is residents want day-to-day practical matters (particularly roads) prioritised over ideological objectives – just 3% of the council's annual spend currently goes on highway maintenance.

As a reminder, the OCC Coalition's nine priorities are:

1. Put the climate emergency at the heart of our work.
2. Tackle inequalities in Oxfordshire.
3. Prioritise the health and wellbeing of residents.
4. Support carers and the social care system.
5. Invest in inclusive, integrated and sustainable transport.
6. Preserve and improve access to nature and green spaces.
7. Create opportunities for children and young people.
8. Play our part in a vibrant and participatory local democracy.
9. Work with businesses/partners for environmental, economic and social benefit.

There is a perception in rural areas that the city of Oxford receives favourable treatment. Net satisfaction figures with respect to the way OCC runs things add weight to this:

- Oxford 36%
- Cherwell 14%
- South Oxfordshire 14%
- Vale of White Horse 10%
- West Oxfordshire 6%

### OCC Budget Planning Process

Updates on OCC's budget planning for 2025/26 and beyond were presented to the cabinet on 15 October, with new budget proposals to be published in late November and a final budget set in February 2025. At this stage calculations are being made on the basis of a 1.99 per cent council tax rise – the new government has not set out a policy on any council tax rise limits. Other key information also needs to be confirmed, including how the national living wage will operate from 1 April 2025.

### Impact of National Budget on Councils

The whole range of implications of the Budget on OCC will not become clear until the Local Government Policy Statement in November and the Local Government Financial Settlement in December, but the council will face a substantial rise in overheads if the increased minimum wage and higher Employer National Insurance costs are not funded by central government.

*OCC Cllr Nicholas Field-Johnson,*  
Burford & Carterton North  
[nick.fieldjohnson@oxfordshire.gov.uk](mailto:nick.fieldjohnson@oxfordshire.gov.uk) and [nfjuk3@gmail.com](mailto:nfjuk3@gmail.com)



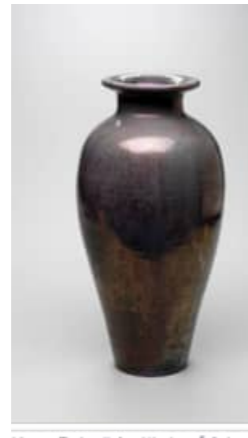
## LETTERS TO THE EDITORS

### On the Tiles

It was with interest that I read "Returning With Style" regarding tile artist Richard Horne's return from Detroit. While it was mentioned that few would think that Burford (and here I expand this to mean the Cotswolds region) and Detroit would have much in common, this is a misconception.

The Cotswolds was the heart for what would become the worldwide Arts & Crafts movement. While it involved innumerable figures, one immediately thinks of William Morris at Kelmscott Manor and C.R. Ashbee and The Guild of Handicraft in Chipping Campden.

The movement's reach landed squarely in Detroit with the founding in 1903 of Pewabic Pottery by the artist and teacher Mary Chase Perry Stratton and her business partner Horace James Caulkins. The active and thriving institution still operates in its 1907 Tudor Revival building and is a National Historic Landmark. Ms Stratton was an award-winning ceramicist well known for her pioneering iridescent glazes. Her work is represented in many major museum collections across America along with numerous surviving large installations. Fine examples of her early work can sell at auction for well into five-figure sums. Part of its legacy is the fostering of innumerable talented ceramicists, many of whom have remained in the Detroit area, and many who have spread throughout the world. Of these, Mr Horne may consider himself as one.



Vase, Detroit Institute of Art



Mug in Stonesfield flat

I am very familiar with Pewabic, having had the honour of serving on its board for many years. This brings me to a very unusual instance of the reach of Pewabic to the Cotswolds. My sister-in-law had recently moved to a flat in Stonesfield. All had been cleared except for one notable exception. Left on the mantle was a mug with the Pewabic logo!

I wish Richard Horne and his family a hearty 'welcome home' from a fellow Detroit and tile enthusiast.

*Dean Baker, Little Barrington*

### And More Tiles

Being from Detroit, I sent the article "Returning With Style" to my friends still there. They wrote: "Got your article about the Burford/Detroit tile business and immediately recognised the style of the face in the sunburst tile. The fine detail and the chalky-matt finish are very distinctive. The tiles are stamped "Ellison", for David Ellison. They sell them at the Pewabic workshop on Jefferson and I've seen them at art fairs over the years. In fact, I've bought at least one of his tiles for a gift. Really some beautiful stuff!" Pewabic Pottery is still one of our favourite places, so next time you're visiting Detroit...

*Myra Ford*

*Any more Detroiters out there? - Ed*

### That's the Limit

We are writing in response to your article in The Bridge regarding the 20mph speed limit through Fullbrook.

We walk daily to Burford at about 8am. We have noticed that the traffic speed of cars and HGVs is considerably more than the legal limit and much faster than the previous 30 mph restriction. Traffic speed does marginally reduce during the day with local residents attempting to slow down, but generally traffic still travels considerably faster than the 20mph limit. Overtaking has become more frequent and this represents a greater danger to other road users and pedestrians.

If the stated aims of the reduced speed limit are to protect the environment from dangerous emissions and to reduce road deaths, neither is likely to be achieved. Cars travelling in low gear are likely to produce greater emissions and as there have been no fatal accidents in the 18 years we have lived here, casualties cannot be reduced.

*Martin and Angela Weller*



### Question of Taste?

We have seen quite a few references recently to Mr Clarkson's latest endeavour. Whilst I'm sure that Burford probably benefits indirectly, is this the image we want to portray? As an aside I'm seriously considering raising it with the Advertising Standards Authority as I don't feel that it's in the best of taste.

*Michael Tancock*

### Pets Plea

Bonfire Night is great fun for people but not so much for many pets who can be very distressed by the noise made by fireworks. If you are going to hold a firework display at home, it would be a courtesy to tell your neighbours in advance, especially if it is not on 5 November and therefore unexpected. These days it seems to be popular to let off fireworks at parties at other times of years so could I ask people via The Bridge to show a little consideration while enjoying yourselves.

*Dorothy Stokoe*



"Tis the season for kindling the fire of hospitality in the hall, the genial flame of charity in the heart."

Irvine Washington

As I look around the Madhatter Bookshop at all the beautiful seasonal books piled into neat stacks around tables decorated with holly and ivy and the Nutcracker window at Little Madhatter with its

falling snow, I cannot help but wish it could be Christmas all year! With slim volumes of poetry, perfect for your pocket, and gilt-edged hardbacks by Dylan Thomas and Clement C. Moore, I feel like I am seeing the joy of Christmas through childlike eyes. Author and academic Katherine Rundell wrote "reading children's books as an adult helps us to refind things we may not even know we have lost". With all the political unrest and violence in the world, surely the gift of rediscovering childlike joy is much needed.

It has been suggested that, whilst we are encouraged to remember the details of the books we read so that we might regurgitate them for academic assessment or over a glass of wine amongst friends, maybe we should consider that it is not the details of the book we truly remember but the life around us at the time of reading. This idea struck me as so very true. I can remember the colour of my bedding whilst finishing *The Faraway Tree* under the duvet after lights out, I remember the sun on my face and the sound of the river whilst I read *On The Road* by Kerouac as a student.

However you celebrate Christmas this year, find a moment to read, be it a novel by a favourite author, a volume of poetry or indeed a childhood classic, be it alone or sharing a story because books give meaning to the universe and help create memories to treasure. Here are a few of our seasonal favourites that we think will bring you joy:

*A Poem For Every Day of Christmas* Edited by Allie Esirie

This is the perfect collection of 31 poems to take you through December. Perfect for sharing with friends and family.

*One Wise Sheep* by Ulrich Hub

The sheep can't sleep, the shepherds have disappeared, maybe they've gone to see the child that everyone's talking about. The sheep decide to go to, but many pitfalls await an unruly flock in search of good tidings on their first night hike.

*A Book for Christmas* by Selma Lagerlof

'But what shall I do on Christmas Night if nobody has given me a book?' In this enchanting selection of winter stories, Nobel Prize winner Selma Lagerlof weaves magic and miracles together.

*Brightly Shining* by Ingvild Rishoi

Christmas is just around the corner and Ronja and Melissa's father is out of work. Will a job selling Christmas trees be the luck the family needs? *Brightly Shining* is bound to become a magical modern classic.

*The Gruffalo* – The Dolls House Edition.

Every year a miniature edition of a classic book is added to the shelves of the library in Queen Mary's Dolls House which resides in Windsor Castle. This beautiful edition is an exact copy of the one which has been added to the library this Christmas.

From myself and all the team at Madhatter Bookshop and Little Madhatter Emporium, we wish you peace, love and happy readings at this wonderful time of the year.

*Kim Harvey*

## ALICE'S BOOK GROUP

The most recent meeting of Alice's Book Group marked 20 years of our monthly discussion. It was celebrated with a token of our gratitude for our generous hostess and by drinking sparkling wine. We talked of friendships made, and friends lost, and remembered some of the approximately 250 books we have read, and what a mixture of reading it is. Each of us has had our horizons widened, surely the purpose of a book group, and enjoyed some lovely gossips.

*The Moonstone* by Wilkie Collins, published in 1868, is reputed to be the first detective mystery written in English. It shows its age only by the introduction of mysticism, such an obsession of the Victorians, and the speed with which the characters could travel between North Yorkshire and Central London, this when the first public railway only opened in 1850. We were surprised when a character uttered "cool" in affirmation of a good idea, but really, the language is accessible and hardly dated.

The consensus was that it was a great read. The history of the Moonstone, a yellow diamond sacred to the Indian goddess of the moon, is steeped in the history of the Raj. British colonialism comes out not too well, and throughout the book there is a tolerance of other races and classes. When the stone goes missing there are several suspects, and true to the genre, we are led a twisting route to the villain. Some clues are a bit clunky and some of the events are a trifle far-fetched, and there is a certain amount of typecasting, but who can complain when the narrative bowls along so well?

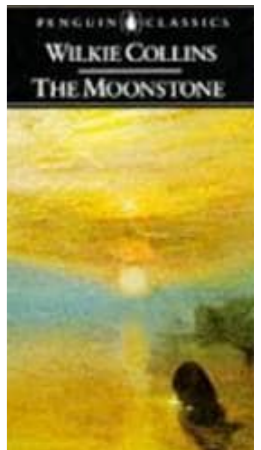
The characters are realistic, with foibles and fancies, and even without specific descriptions there is a sense of the places where the action occurs. The story is told in sections by different participants and their contrasting natures are cleverly delineated. There is gentle humour in the portrayal of an old retainer, and in the simpering hypocrisy of another of the storytellers. We were struck by the growing, one member called it a "bromance", between unlikely candidates, and generally emotions are sympathetically treated.

This story certainly warrants its designation as a British classic, well written and with melodrama, love and villainy and a happy ending with any loose ends tied neatly in a bow.

Next, after choosing a book by the wonderful Amor Towles, we realised it exceeded our self-imposed price limit, so opted for the interesting *Travels with Epicurus* by David Klein. After that we may choose something festive

We wish you a wonderful Christmas with time to sit and enjoy a good book.

*Veral Marshall*



COPYRIGHT © 2024 Copyright in all articles in this magazine is reserved by the respective authors of those articles as identified. Requests for permission to copy or reproduce articles should be submitted in writing to The Bridge c/o Burford Post Office 29 Lower High Street Burford OX18 4RN or by email to editor@thebridgeburford.co.uk

## THE HIDDEN LANDSCAPE OF THE COTSWOLDS 3

### Interpreter of the Rocks

In the previous issue we discovered that the bedrock of the Cotswolds is built up of numerous different layers that occur in a specific and predictable order across the area. The science that deals with such layered rocks is called *Stratigraphy* and the Cotswolds played a key role in its development.

Until the 18<sup>th</sup> Century most people accepted that the Earth was created largely in its present form just a few thousand years ago. Of course, some pioneers had noticed that many aspects of the Earth's structure suggested a long and complex history but these were generally explained away as the result of the Biblical flood. But by the middle of the 18<sup>th</sup> Century geologists had uncovered too many anomalies for a single episode of flooding to explain. However, Earth science was still in its infancy and no coherent explanation of the rock record had yet been developed.



One of the most important figures in deciphering the message of the rocks was William Smith, later christened The Father of British Geology. He was born in Churchill, about ten kilometres north of Burford, in 1769. There is a memorial to him in the village (see above), a few yards from The Chequers pub which his step-father ran when William was a boy. He had little formal education but was a bright boy and developed an interest in surveying. When the Enclosure Acts required a survey of the Churchill area, the local surveyor, Edward Webb, gave William an opportunity in his team. William did an excellent job and his career as a surveyor began.

Webb next sent him to the Somerset coalfield where he began to learn that coal seams, as well as the rocks above and below them, could be matched from shaft to shaft. Although miners had understood this since at least Roman times, nobody had tried to generalise these observations into a framework that might explain the vertical and areal distribution of the rocks. This became Smith's life's work.

Smith was fortunate in that his career coincided with the great age of canal building in Britain. Canals provided cheaper transport than the primitive roads of the time, so developed rapidly until about 1800 when they were in turn superseded by the railways. Smith's skills made him an obvious choice to guide the surveying and digging of the canal network. As work progressed he made meticulous descriptions of the rocks that were excavated, including the fossils they contained. He also noted the attitude of the rock layers; were they flat, or inclined? If the latter, in what direction did they dip and by how much?

By means of this careful documentation, Smith gradually discovered that the same rocks, in the same stratigraphic order and containing the same fossils, occurred in different canal sections. But the key insight was that he could extrapolate between these sections to predict the distribution, and even the depth, of these rocks across the intervening countryside. His collection of fossils allowed him to refine his sections still further as many thick, rather monotonous, rock units contained different fossils at different levels within the layer.

The culmination of all this work was a series of maps that covered most of England and Wales and parts of Scotland. His first map, produced in 1799, covered the area around Bath and showed the distribution of the Lias and Middle Jurassic rocks that cover most of the Cotswolds. The full geological map did not appear until 1815, just after Wellington's victory over Napoleon at Waterloo.

It is difficult to overestimate the importance of Smith's contribution to Earth Science. He was among the first to show that the outer skin of the Earth was composed of many layers that must have been laid down at different times in the Earth's past. His demonstration that each layer had a unique fossil assemblage would become important when evolution began to be discussed later in the 19<sup>th</sup> Century. At a more practical level he showed how particular rock units could be located even when deeply buried by younger layers. This had huge economic consequences, for example in the search for coal to power the industrial revolution, then in full swing. One definition of genius is "to see what everybody else has seen but to think what nobody else has thought". That seems to fit Smith's stratigraphic work pretty well.

So it is odd that Smith is not more celebrated, especially in this part of the world. He is not even mentioned in many guidebooks to the Cotswolds. Apart from the memorial mentioned earlier, there is only the small Churchill Heritage Centre to remind us of his achievements\*. Yet the modern world continues to rely on the techniques he invented to find the raw materials that sustain the global economy and to elucidate the geological history of the planet.

Those who may be interested in learning more about William Smith should start with Simon Winchester's biography - *The Map that Changed the World*.

\*There is also a plaque at Edward Webb's former house in Stow-on-the-Wold.  
*Joe Brannan*

## BURFORD OIL SYNDICATE



(Covering Burford, Fulbrook, Taynton and Bradwell Village Only)

Wishing all our members, and everyone locally a happy enjoyable Christmas Season, and a healthy and peaceful 2025.

If you are quick, our early December order will be placed on Thursday 5 December, closing at 5.00pm. Delivery will be during December we hope, but may extend into January. Our next order will be on Thursday 9 January 2025 with delivery expected by the end of January.

You can join the syndicate and order online at [www.burfordoil.co.uk](http://www.burfordoil.co.uk), or membership application forms, and order forms are available from Reavley's Chemist. Any questions please contact *Peter Higgs - 07836 238306*

## GETTING UP STEAM

The Fulbrook/Burford bridge has had some interesting vehicles crossing it over the centuries and it's good to see that the practice is continuing. Our thanks to Chris Rowntree for sending us these photos.



## CAROLS AT WATER CLOSE

Our wildlife site at Water Close, Asthall Leigh, continues to develop both for wildlife and the community. There will be Carols at Water Close on 15 December at 18.30. Some members of Witney Jubilee Brass Band will be there to provide the music and there will be drinks and nibbles. We plan to illuminate a couple of the large trees for the evening. There will be a gazebo to provide shelter in case of rain or snow! Please use the Asthall Leigh Memorial car park and then walk down.

We would like to thank Steve Tomlin and Chuck Hunt for arranging and funding this. We look forward to seeing you there.

*Lynne Hughson*  
*On behalf of Asthal Parish Council*

\*\*\*\*\*

## CHORAL CONCERT

### Five Magnificats and a (Christmas) Oratorio

Join us on 14 December at 6pm at High Street Methodist Church, Witney, for an evening of choral music.

The choir will be accompanied by soloists soprano Bonnie Callaghan and baritone Edward Robinson, as well as strings and continuo. The performance will be directed by Terry McNamara.

Doors open at 5.30pm. The concert starts at 6pm.

Admission is free: donations welcomed towards the Society's concert costs.

<https://www.lowerwindrush.org/future-events>  
*Naomi Coombes*

\*\*\*\*\*



Our 2024/25 concert season started on 16 October with a sell-out horn recital given by Nick Korth, co-principal horn of the BBC Symphony Orchestra. Together with Paul Turner on the piano and violinist Michael Bochmann, they performed works by Brahms, Beethoven and Cesar Frank. After the concert Nick commented "it was a pleasure to perform at Burford and lovely to work with Michael and Paul... the audience was really warm and receptive".

This season we have increased the number of our season ticket holders by more than 50% - now at 110, and to have brought in a new sponsor estate agents Tayler and Fletcher. Together with current sponsors this gives a sound base upon which we can plan for next year with confidence. It also allows us to keep ticket prices low for what are exceptional world class players and concerts.

Our December concert is on 4 December and features Mozart's Clarinet Quintet. The sixth of January is our first concert in the New Year and features the BBC broadcaster, pianist, composer and musicologist David Owen Norris giving a talk and presentation on the struggles Elgar had in composing his piano concerto. Elgar never quite finished it and Owen Norris, a great admirer of and expert on Elgar, took on the task of creating both a concerto and a solo piano transcription. David will play it in the second half of the concert. Tickets are still available for both events.

*Geoffrey Haines*

## OXFORDSHIRE LOCAL HISTORY ASSOCIATION

### Autumn Study Day



The OLHA's Autumn 2024 study day coincided with the 150<sup>th</sup> anniversary of the sinking of the emigrant ship, *Cospatrick* south of the Cape of Good Hope in November 1874, with the loss of almost 500 lives. Consequently the overall theme for the day was 'The Far Promised Land\*: A History of Emigration from Oxfordshire'. The meeting, which was open to the public and hosted by the Burford Tolsey Museum & Archive and held at the Baptist Church, attracted a full house of members and visitors.

Nicholas Wood, Chair of the Trustees of Burford Baptist Church, started the programme by providing a brief history of the Burford Baptist Church and its past congregations. Neil Wilson then explored the reasons for emigration from Oxfordshire in the 1840s, before focussing on the sinking of the *Cataraqui* in the Bass Strait, off the coast of Tasmania in 1845, with its payload of emigrants, many from the environs of Tackley.



*The Cospatrick*

Carol Anderson (BTMA Trustee) was then joined by John Bennett to consider what motivated so many people to undertake such a lengthy and perilous sea journey from our land-locked county? How did they meet the cost of their passage? What awaited them on the other side of the world? And what impact did the loss of the *Cospatrick*, that caught fire south of the Cape of Good Hope on its way to New Zealand (only three of the 472 persons on board, many of whom were from the Wychwoods, survived) have on the great exodus of emigrants of the early 1870s.

The afternoon was devoted to exclusive visits to both the Burford Tolsey Museum and subsequently to the Archive, followed by two fully subscribed guided tours\*\* of the town, which were respectively led by Clendon Daukes and Stephen Cooper.

*Peter Martin*

\*Australia and New Zealand

\*\* Such visits and exclusive tours are available from the BTMA for private parties, and to local clubs and associations as they come to plan their 2025 programmes. For further information contact 01993 823533.

## RISSINGTONS LOCAL HISTORY SOCIETY

### Friday 6 December at 2.30pm

"Blenheim Palace Christmas Past and Present" a talk by Antonia Keaney who is Social Historian at Blenheim Palace.

Seasonal refreshments will be served at this talk.  
Venue: Village Hall Upper Rissington GL54 2QW

Visitors welcome £3.50 to include refreshments.  
Enquiries information.RLHS@gmail.com  
or 07815 606770.

*Susan Brown*

## GUIDED WALKS WITH THE COTSWOLD VOLUNTARY WARDENS

Details of the walks available are described on the website (below). Please check walk details carefully on the website, including whether booking is necessary. Additional walks may be published on the website.

<https://www.cotswoldsavn.org.uk/visiting-and-exploring/guided-walks/>

### Adlestrop, Chastleton and Cornwell – Tuesday 3 December – Moderate 3hr 6ml

A lovely walk from Adlestrop where Edward Thomas was inspired to write his famous poem, when his train made an unscheduled stop and he wrote about what he saw and heard. From there we walk to Chastleton, and Chastleton House, owned by the National Trust. The Jacobean house was used as the Seymours' house in the television series of *Wolf Hall*. From here we walk on through the remains of Chastleton Barrow fort to the village of Cornwell and Cornwell Manor, a prestigious wedding venue. We head back to Adlestrop via Daylesford, home of Warren Hastings, the first governor-general of India. Daylesford is now the home of Lord Bamford of JCB fame and was the venue of Boris Johnson's latest wedding reception. Bring a drink/snack.  
Start: 10.00am Adlestrop Village Hall GL56 0YR.  
OS Map ref: SP 242 272. W3W: sourcing.outfit.exotic.

### The icing on the cake of a good walk! – Thursday 5 December – Moderate 4hr 8ml

A gentle walk via Toddington Mill to the village hall for coffee (and more). Then we continue to the railway station and follow the line which passes by Didbrook and Hailes before returning to Winchcombe. A pre-Christmas walk with a welcome stop off. Don't forget to bring cash or cards if you want to indulge in a treat.

Start: 10.00am Back Lane car park, Winchcombe (£1 to park all day, payment by RINGO if preferred).  
OS Map ref: SP 023 284. W3W: daylight.bake.corkscrew.

PLEASE use appropriate footwear as some walks may be steep and muddy in places. EASY - Length may vary but terrain is mainly flat (level); MODERATE - includes some hills and rough ground. STRENUOUS - may be rough underfoot and ascents and descents may be steep. We welcome guide and hearing dogs - sorry, others not allowed.

Walks are free although we do invite donations to help fund our conservation and improvement work.

*Sheila Wasley*



## DANGEROUS DANGERFIELD

In his book *By Thames and By Cotswold* (Archibald Constable & Co Ltd, London, 1908) W.H. Hutton tells how he found a reference to Burford in 'Captain' Thomas Dangerfield's *Memoirs*. Hutton calls this man a 'thorough ruffian' and a 'villainous knave' but the record of his short stay in Burford seems entirely innocuous. It tells how he stayed at *The Bear* for three nights in 1684, and spent his money freely on the first night. He did not go to church on the Sunday because he did not feel well, but in the evening a man called Warren came into the inn, called for a pint of white wine and proposed a toast to the Duke of York. Dangerfield responded by proposing a toast to York's great rival, the Duke of Monmouth. However, notwithstanding this difference of opinion, Dangerfield invited Warren to supper. After this, they were 'very merry' and, when they parted on the Monday, Dangerfield promised to bring Warren a brace of pheasants upon his return.



The yard of *The Bear* in the 17th century.

Hutton then tells us that the inhabitants of Burford had good reason to be grateful that Dangerfield never did come back. Why? Because Thomas Dangerfield (c.1650-1685) had previously been arrested and imprisoned several times for counterfeiting. He had also been tried for high treason in 1680 and he met his end when convicted of criminal libel as a result of his involvement in the infamous 'Popish Plot'. Dangerfield was also a pickpocket, swindler, robber, serial adulterer, and double agent, though some women clearly found him attractive.

*The Bear* in Burford was in the High Street, though all that remains of it now is Bear Court, next to Falkland Hall. However, in his *Inns of Burford* (Hindsight of Burford, 2007) Raymond Moody reproduced the sketch of it as it was in the 17th century, when Dangerfield encountered Warren there.  
*Stephen Cooper*



BURFORD and DISTRICT SOCIETY

### NEW TO BURFORD & AREA?

Welcome. The Burford & District Society will be happy to deliver your free copy of the 'Living in Burford & District' Pack with details of many of the local facilities, clubs and societies. Simply email your name and address to [lizannjack@gmail.com](mailto:lizannjack@gmail.com)

## FRIENDS OF BURFORD LIBRARY

The last embers of the Guy Fawkes bonfire party had scarcely died out before we found ourselves hurtling towards the joy of the Christmas festive season and what a splendidly exciting month December is.

However, don't be at all dismayed about a lack of celebrations to look forward to in 2025. Your friends at Burford Library have already planned their New Year debut event: the ever-popular Fish 'n Chips Pub Quiz night. An unmissable date for your New Year diary:

### The Royal Oak Pub,

### Burford on Thursday 27 February.

**Tickets at £20 each, include entry to the quiz and a sumptuous fish and chips supper. They can be obtained from The Royal Oak. Note that teams are limited to a maximum of six people.**

As this is a perennially popular event, early booking is encouraged. We look forward to greeting many of our friends and supporters there.

Meanwhile we at your local library wish you, your friends and family, a very Happy Christmas and a peaceful and successful New Year.

*Maureen Percival*



## Thursday 27 February

### 7pm supper / 8pm quiz

**Tickets £15**

**(include entry to the quiz and your 'fish & chip' supper)**

The Royal Oak, Witney Street, has kindly allowed the Friends of Burford Library to hold a pub quiz to support the Library AND has donated a prize of 2 bottles of wine to the winning team. Please join us for an evening of head-scratching enjoyment!!

**Team size 6 people only**

## CALL OUT TO CYCLISTS

### Help fill in the Safer Cycling map!

How many of us would choose to get on our bikes more if it was easier to get from village to town to city? We could take our children and grandchildren out for biking adventures, seeing the sights of nature through the seasons. Do you want to find safe cycle paths that are low-traffic or traffic-free for families to explore, seniors to enjoy, children to cycle to school or for your commute to work?

Last month over 40 people attended a Safer Cycling event in Witney. The event was organised by Green Party councillors in order to present the Oxfordshire online cycling map, put together by Oxford City councillor Emily Kerr and Robin Tucker, Co-Chair of the Coalition for Healthy Streets and Active Travel (CoHSAT).



The map can be found at [shorturl.at/QaTRO](http://shorturl.at/QaTRO). It shows that, although safe routes do exist, they are not joined up, and there is a lot of work still to be done. The creators are therefore asking us to zoom in on our local area and see if we can add in routes. There are particular gaps around Carterton and Burford where we know there are some safe routes (though not enough) that could be added to the map. If you don't have the link above handy, you can simply google "Oxfordshire safe cycling map".

Please help to fill in the gaps!

*Rosie Pearson*

\*\*\*\*\*

## BURFORD ENVIRONMENTAL ACTION GROUP AKA BEAGLES

The past month has seen a flurry of activity – if any swifts out there will excuse the pun! These birds are increasingly endangered, and – as reported in the October edition of The Bridge – we intend to do our bit to help them out. We will be talking to Burford's schools over the next few months and are looking to site some boxes at strategic places around the town. If anybody has a suitable property do please let us know – the boxes (37cm by 22cm) need to have a drop of at least 4.5m and be north or east facing.

Wild Oxfordshire held their local environmental groups conference in the Warwick Hall on 9 November, and our very own Lucy Staveley and Marcus Simmons were in attendance to tell representatives from some 20 environmental groups across the country what they've been doing regarding local tree planting and nature recovery along the mid-Windrush valley. It can sometimes feel like a lonely furrow we're

ploughing, so it was a great shot in the arm to hear of and from so many like-minded organisations out there.

Our BEAGles Repair Cafés continue to be a great success – our last one on 2 November at St John's Church Hall in Carterton raised £121 for the cause, with 23 visitors bringing 30 items for repair or sharpening, 26 of which were dealt with. We are always in need of volunteers - if you can wield a screwdriver or can help with organisation or refreshments we would be most grateful. Repair Cafes are also scheduled for Milton-under-Wychwood (1 December) and Stonesfield (7 December).

Following on from the success of the last Ecoday in March 2023, we have decided to commit to another event this March; the date will be 15 March, the Ides of March – read into that what you will. We'll be looking at four different areas, **Land, Energy, Transport and Community**, including films during the day, presentations, workshops and many other things besides. One of the films we'll be showing that looks at the climate crisis from a slightly different angle is *Climate Lens*, which highlights its effects on mental health. In addition we'll be focusing on nature recovery, buying and sourcing local, and the cost benefits of the low carbon economy and the energy transition – please keep the date free in your diaries, from 11.00am to 4.00pm.

And, lastly: if you want to join in, our BEAGles meetings are on the third Monday of every month, at 7.30pm. Our new venue is the Burford Baptist Church. Sometimes we gather just for a chat and to plan our next actions, and sometimes we have a speaker; we're now looking at our programme of speakers for 2025, so if you have anything or anybody in particular you'd like to propose, please let us know. You can also get involved in other ways: repair cafés, tree-planting, litter-picking or even helping us with our social media! Get in touch at [beagles.burford@gmail.com](mailto:beagles.burford@gmail.com) if you would like to know more.

*Andy Hayter, [beagles.burford@gmail.com](mailto:beagles.burford@gmail.com)*

\*\*\*\*\*

## BRIDEWELL GARDENS

### Celebrates 30 Years of Mental Health Recovery and Launches New Campaign

Bridewell Gardens, a pioneering mental health recovery service in West Oxfordshire, marks its 30th anniversary. Since 1994 the organisation has supported people whose lives have been significantly affected by mental ill-health to work towards recovery through gardening and land-based crafts.

Over three decades Bridewell has provided a sanctuary where people cultivate a walled garden and a vineyard, gaining confidence and skills. The service helps 70-90 individuals annually, including those with bipolar disorder, schizophrenia, and depression, with nearly half of participants moving on to employment or volunteering.

To commemorate its 30th year, Bridewell Gardens announces a fundraising campaign for a £160,000 capital project, aimed at enhancing its site and expanding its therapeutic programme. This includes upgrading infrastructure, a new activity space, and an outdoor kitchen. The first phase, a crowdfunding campaign to raise £59,000 for a key working space, is now under way. See <https://www.spacehive.com/bridewellgardens>. Bridewell Gardens extends gratitude to its supporters and invites the community to join in sustaining its mission of mental health recovery for the next 30 years. More information at [www.bridewellgardens.org](http://www.bridewellgardens.org).

*"I'm still not sure what the future holds, but the main thing is I can see one now."*

*Rachel Green*



Cotswold Wildlife Park has achieved breeding success with one of the most endangered lemurs in Madagascar – the Greater Bamboo lemur (*Prolemur simus*). Births in captivity are extremely rare. In fact, the Park is the only zoological collection in the UK and one of two worldwide to have bred the species this year. They are classified as "Critically Endangered" by the International Union for the Conservation of Nature (IUCN) and with only 36 animals in captivity globally, every breeding success of this rare primate is important. Only seven other zoological collections in the world keep Greater Bamboo lemurs.



The as-yet-unsexed and unnamed youngster (pictured above) was sired by breeding male Raphael and female Bijou. Both are part of a European Breeding Programme (EEP). This is the fourth year running that the Park has managed to breed these charismatic primates. The new arrival can be seen exploring its enclosure inside the lemur exhibit *Madagascar*.

Lemurs are considered one of the most endangered groups of mammals on earth. According to the IUCN, a staggering 98% of lemur species – 103 out of the 107 listed – are now threatened with extinction. Greater Bamboo lemurs have been described as one of the most critically endangered lemur species in Madagascar, along with Alaotran Bamboo lemurs and Crowned Sifaka. From subfossil records they were once widespread across Madagascar. Little is known about the chronology of their decline and in the 1970s and early 1980s it was suspected that the species might even be extinct.

### Protecting wildlife beyond the Park

Cotswold Wildlife Park funds two major lemur conservation projects in Madagascar: *Helpsimus* and *Impact Madagascar*. *Impact Madagascar* focuses on the conservation of Crowned Sifaka. *Helpsimus* is committed to the conservation of Greater Bamboo lemurs and protecting Madagascar's biodiversity in cooperation with local communities. This year *Helpsimus* reported that the population of Greater Bamboo lemurs protected by the project has almost tripled in 10 years - an exceptional result considering this species was on the brink of extinction some 15 years ago. From less than 100 in 2008, it is likely that the population now exceeds 1,500 individuals in Madagascar thanks to the conservation efforts of *Helpsimus*.

These gregarious primates live in polygamous groups and are the only lemur species in which males are dominant. Breeding season takes place between April and June. The gestation period is estimated at 150 days after which a single infant is born. During the first five weeks of its life, the newborn is cared for by its mother. When the infant is seven to eight weeks old, the mother gradually decreases nursing, after which the baby begins to explore its surroundings. Weaning takes place at about eight months old. Section Head of Primates, Small Mammals and Birds, Natalie Horner, comments: "Our group first successfully bred during

lockdown in 2020. Since then, our male Raphael and females Bijou and Veloma have produced seven youngsters taking our total to ten. Bijou and Veloma are wonderful mothers and Raphael is such a playful dad".

**Cotswold Wildlife Park is open from 10.00am every day, with last admission at 4.00pm** (not Christmas Day) 3.00pm during winter months starting 28 October. Please note the Park's opening times change from 7 January 2025. Please see <https://www.cotswoldwildlifepark.co.uk/plan-your-visit/opening-times/>

*Debbie Ryan*

\*\*\*\*\*

## RSPCA OXFORDSHIRE

Love pets? Please help us to help Oxfordshire pets in need.

We've all heard of the RSPCA and how they rescue badly treated animals. Many of the pets that are rescued by RSPCA officers are then looked after by local RSPCA branches. But did you know that these branches are independent charities and are NOT supported financially by the RSPCA? They raise their own funds to provide the care needed by the pets until they are rehomed. In 2023, RSPCA Oxfordshire Branch spent £39,000 caring for 89 cats, 19 dogs and 40 rabbits all rescued from cruelty or neglect in Oxfordshire homes.

RSPCA Oxfordshire Branch also help Oxfordshire's residents with sick and injured animals, neutering and microchipping if owners are unable to provide care for their pet. This cost the Oxfordshire Branch £20,000 in 2023.

With more people struggling financially the RSPCA is seeing more pets in need of help. Animal charities are all struggling to cope with this situation.

If you love pets, then please help us to care for those in need in Oxfordshire. All donations given to the RSPCA Oxfordshire Branch are used to help pets in need from Oxfordshire.

- Give us a one-off or monthly donation
- Gift us money in your will
- Give in memory of a loved one or beloved pet
- Gift a donation for a birthday or anniversary treat

*Susan Hill*



## CAN ALLAN BE OF HELP TO YOU

I may have put Burford's Café Fifteen and my wonderful team behind me but I am keen to keep busy and ensure those grey cells are kept active. Do you have a project or business opportunity that needs an extra pair of hands, if so, my wealth of experience might be of use to you.

From my years in publishing, web design and print to decades of involvement in the entertainment industry in sound, lighting and production and creative success stories such as the London Overground Underground Map, there may be something of interest to you.

Email [allanread@btinternet.com](mailto:allanread@btinternet.com) or leave a message on 07768166277

*Allan Read*

## BOWLING

Burford Town Bowls Club once again had a very successful year, maintaining our position in Division 3 of the Oxfordshire County Men's League and finishing second in the County Mixed League. In the County knock-out competitions the club had one member reach the Longford Cup semi-final with another being the beaten finalist in the Officer's Cup; in the Hawker Cup we achieved a very creditable third place (claiming a Division 1 scalp on the way). In early September we were honoured to be invited to host a match against The Friends of English Bowling who are the biggest supporter of the sport of outdoor bowls in England. This year's early season tour was to Weymouth 9-13 May where we played and won matches against Dorchester BC, Greenhill (a green situated looking down on the seafront at Weymouth), Portland YOI BC and Salisbury BC; next year's tour is to the Torquay area, again in early May. A full programme of 25 friendly fixtures enabled many members to play in slightly less competitive matches against other clubs in the county, whilst introducing new bowlers to playing the game.

In April we enjoyed a visit from 12 French visitors who were staying at Bourton-on-the-Water for a week. They made contact via the website and wanted to compare bowls with their game of pétanque. This developed into a day's visit which included a guided tour of Burford (thanks to Clendon Daukes and Bert Clough for being town guides) then lunch at Huffkins after which they were introduced to the game of bowls. After a late afternoon tea at the club, they made their weary way back to Bourton-on-the-Water having spent a memorable day in Burford.

The Seasons Art Class continues to enjoy the clubhouse facilities and have booked their three 14 week sessions in 2025. We are pleased to offer the clubhouse as an after-match venue for the newly formed Burford Hockey Club as a place to socialise after their matches on the artificial turf at Burford School and look forward to accommodating them as their fixtures increase with the development of their club.

The summer saw the club undertake a major building project, extending the clubhouse by nearly three metres with the full-width flat roof extension. This enables us to be able to facilitate indoor short-mat bowls a lot more easily as the two 45-foot mats just fitted into the length of the clubhouse and left very little room for players to stand at the ends of the mats. The extension now allows the mat to be placed a good metre away from the bar whilst giving more than adequate space for players to stand at either end of the mats.

If you think you might like to try bowls then please have a look at us on [www.burfordtownbowlsclub.co.uk](http://www.burfordtownbowlsclub.co.uk) where you will find contact details or visit the club on a Monday evening.

*Jeff Bizzell*



\*\*\*\*\*

## CHRISTMAS ART EXHIBITION

The Seasons Art Class Burford is delighted to be hosting its fifth student art exhibition on Wednesday 4 December at Burford Town Bowls Club. The free exhibition will be held between 1pm and 3pm and visitors will be welcomed with a glass of fizz on arrival.

The exhibition will showcase paintings and drawings that have been created over the 14 weeks autumn course.

The Seasons Art Class Burford is a friendly and supportive art course for grown-ups. Beginner and Improver level students



develop creative skills through learning how to use pencils, oil pastels, watercolours and acrylic paint. The 14 week course takes place at Burford Town Bowls Club on Wednesdays and a new class for Beginner students will run on Thursdays from January. Tuition, demonstrations and support are given throughout the course and everyone can expect a sociable and supportive environment to work in. Lots of tea, lots of cake and lots of art! Spaces are limited so booking is essential.

Find out more or book your place on the January course by contacting Chally Spokes on 01865 426625 or by emailing [theseasonsartclassburford@gmail.com](mailto:theseasonsartclassburford@gmail.com)

*Challoner Spokes*

\*\*\*\*\*

## SHOPPING FOR CHRISTMAS IN BURFORD

**There are so many present ideas to be found in Burford's High Street including**

Woodcraft	Jewellery
Candles	Paintings
Clothing and hats	Sculptures
Slippers	Sporting momentos
Boxed confectionary	Luxury toiletries
Kitchen goods	Stationery
Decorations	Calendars
Books for adults	Home accessories
Pyjamas	Novelty items
Children's toys and books	Plants
Antiques	Socks (and why not?)

And great food and coffee shops!

*Editors*

## THE BRIDGE COTSWOLD QUIZ

**Our thanks to Joe Brannan who provided us with this challenging quiz for Christmas. The first correct answer (or nearest to it) will receive £100 towards a charity of their choice. Please email your answers to [editor@thebridgeburford.co.uk](mailto:editor@thebridgeburford.co.uk) before 31 December. No googling unless desperate!**

- Who was "set down from the carrier's cart at the age of three" and in what village did their life begin? (2 points)
- This appropriately-named Cotswold village was visited at Christmas time by which 30-something diarist worried about her weight, in the film of the book? (2)
- Where and in which "Games" can you become Shin Kicking World Champion? (2)
- Which Shropshire lad wrote the following about a Cotswold Hill and which Cotswold composer later set it to music? (2)

The bells they sound on Bredon  
And still the steeples hum,  
"Come all to church good people",  
Oh, noisy bells be dumb;  
I hear you, I will come.

- This Cotswold Church was described by Miss M.D. Anderson as "an illogical agglomeration of parallelograms". (1)
- Which Jacobean Manor House with a famous fountain connects Father Brown to Wolf Hall? (1)
- Where was Queenie born in 2022? (1)
- Which knights might you hear whispering near which Cotswold village? (2)
- Why is Upper Slaughter doubly thankful? (1)
- Which Dr Who opened what in Chipping Norton in 1975? (2)
- Which Emperor enthused Japanese tourists to visit which Cotswold village? (2)
- Which Cotswold Memorial incorporates part of the clock from the Cloth Hall building in Ypres, Belgium? (1)
- Who wrote the following about which Cotswold river? (2)

A lonely river all alone,  
She lingers in the hills and holds  
A hundred little towns of stone  
Forgotten in the western wolds.

- Which street would you be on if you were heading to Corinium from Verulamium? (1)
- What links New Street, Chipping Norton with Baker Street, London? (1)
- To the textile designer the house was "a heaven on earth"; to his artist friend the village was "the doziest clump of old beehives to look at you could find anywhere". Name both characters and the village. (3)
- Which one of six wives is buried at this Cotswold castle? (1)
- In which village might you run into the Mucklowe cousins? (1)
- Which Cotswold-based poet wished they'd looked after their teeth and spotted the dangers beneath? (1)
- Which Bostaurus contains an Ankylosaurus? (1)

Total 30 points

## CHURCH SERVICES AND EVENTS IN BURFORD PARISH CHURCH

- As you might imagine there are lots of different services happening in Burford Church to celebrate the birth of Jesus:
- To ensure everyone gets a seat, and that we stay within our fire regs, we are running two identical **Candlelit Carol Services** this year at 4:30 and 7:30pm on 22 December. There is no charge for this event but to guarantee a place please book a ticket at [burfordchurch.org/Christmas-2024](http://burfordchurch.org/Christmas-2024). This is a fairly traditional event and most suited to adults and children aged 8 or over. Both services will be followed by mulled wine and mince pies.
- The **Crib Service** at 4pm on 24 December is a child-friendly retelling of the Christmas story. No tickets are required for this event.
- Also on Christmas Eve we have our traditional **Midnight Communion Service**. As with last year this will be held at Asthall Church. This service starts at 11pm.
- On Christmas day we have two services – a **Traditional Communion** at 8am and an **All-age Celebration** at 11am.
- Following the success of our **Community Christmas Day Lunch** last year we are running this again starting at 2pm. This is open to all whether you have attended any of the services or not. There is no charge but booking is essential for catering purposes. Go to [burfordchurch.org/Christmas-2024](http://burfordchurch.org/Christmas-2024) for tickets.

*Adrian Jackson*



## THE BRIDGE TIMETABLE AND CONTACTS

The closing date for entries to the editorial sections of the magazine is 10th of the month preceding publication. Please send articles and information to:

[editor@thebridgeburford.co.uk](mailto:editor@thebridgeburford.co.uk)

**Advertisements** need to be booked before the 10th of the month preceding publication. Please contact:

[advertise@thebridgeburford.co.uk](mailto:advertise@thebridgeburford.co.uk)

## MIKE RUSSELL

4 September 1931 - 2 November 2024



Mike Russell was a resident of Taynton since 1988. Among other achievements he was a brilliant wildlife photographer whose work has appeared in many editions of *The Bridge*. Wendy Russell has given her permission to include this interview with Mike last year as a tribute to him. We are including two of his wonderful photos here.

Regular readers may remember the stunning photographs of a hawk moth and a mistle thrush both in the June issue of *The Bridge*, and both taken in Taynton. We thought it would be of interest for readers to learn a little more about the man behind the images.

Mike and Wendy Russell have lived in Taynton since 1988, but Mike's interest in photography and in the natural world goes back to his childhood at school in England in the 1940s. His favourite bird was the red-backed shrike, solitary but fairly common then (but no longer so) around Marlborough in Wiltshire; he often saw one on a bike ride into the countryside.

Born in England, his father's businesses were in China and Malaya, and his earliest years were in the city of Tientsin in northern China, where Mike picked up Mandarin before he spoke English. He remembers going to Peking (as it was then known) from Tientsin riding in a dicky seat, an upholstered seat which folded out from the boot space of the two-seater car. In his childhood an aspect of his father's business was bartering for camel and sheep wool in Mongolia, which was floated down tributaries and then the main rivers to the factory in Tientsin, where it was picked

over, bundled and shipped overseas, mainly for camel-hair coats in the USA.

University saw Mike follow in his father's footsteps to study mining engineering at the Colorado School of Mining in the 1950s. The family business included coal mining in Malaya. The seas around Malaya gave Mike the opportunity to develop his interest in photography. He became a scuba diver and teacher of scuba diving, whilst developing a passion for and skill in underwater photography. In those days equipment was less sophisticated, of course. To get good deeper water shots, he swam with a net of flashbulbs attached – no flashguns then. To entice more interesting and rarer fish, they'd take down a bucket of offal sometimes. The most unexpected arrival on one such occasion was an eight-foot-long shark – "Quite big enough", said Mike. Coral fish were his regular images. Mike continued scuba diving off the Florida coast until the mid-1980s while evaluating a possible diversification of the family business into citrus fruit farming.

Florida and Mexico also gave Mike a chance to fish on the warm seas from outboard boats. Tarpon fish can be tempted into "a real fight" using a feathered hook. He had a particularly impressive sail fish stuffed and mounted and shown in pride of place for a while. The choice of Taynton for an English base was influenced by his life-long love of fly fishing. The location had to be accessible to Heathrow (for him to fly out to Malaysia as it became on independence),

accessible to Wendy's family in Droitwich, and "not too far" from the West Country for sea trout fishing.

Travel gave Mike the opportunity to photograph big game on safari in Kenya, Tanzania and Botswana. A magnificent photo of a lion in repose shows his skill and patience – and good fortune!

Mike's lifetime in photography on land and under water, has seen huge developments in the technology. These days he has three cameras and a number of heavy long-lenses, best used with a tripod. One of his set-ups is indoors, enabling him to photograph garden birds through an open window. The technology allows the camera to pick up and follow a bird's eye to ensure focus, and take a burst of images – 20 per second is not unusual. Then come the hours editing on the computer – "90% are rubbish" says Mike. Such a far cry from taking reels of film to be developed, or indeed having a dark room at home. Once Mike has identified the best image, he uses a good-quality printing agency for the prints which are

mounted and framed around his house. Taynton has benefitted from Mike's skill and his enjoyment of village life. When you visit the parish church, you will find photo albums recording the life of the village – the famous annual fete, open gardens, and significant village events. They form a delightful record of a vibrant and friendly community.

*Ruth and Cedric Reavley*



Sometimes this information is changed without notification to us, so please check before turning up to an event.

## REGULAR LOCAL EVENTS, CLUBS AND SOCIETIES

Aerobics	Monday 6.15; Thursday 11.45 + 6.15pm	Warwick Hall	Gill Hames 822971 gillianhames46@gmail.com
Alcoholics Anonymous	Wednesdays 7.30pm; Fridays 1.00pm	Bradwell Village Hall	Patrick 0786 796 0716
Astally Arms	Last Friday of the month	Memorial Hall Asthall Leigh	From 7.00 pm
Badminton Group	Monday nights. Friendly all abilities.	Burford School 8-10pm.	Kevin 704655 scareyradar@yahoo.co.uk
BEAGles aka Burford Environment Action Group	Third Monday of the month	The Prince of Burford	7.30pm
Burford Bridge Club	Every Tuesday Joining Fee £30 Monthly Session Fee £12.00	Jan Bolton 07547 633391 secretary@burfordbowlsclub.co.uk,	5-7pm
Burford Badminton Club	Tuesday nights 8-10pm	Burford School - fun, social, all abilities	Vijay 891043 vijaysmobile@gmail.com
Burford Crafters	3rd Wednesday of the month	Burford Library 2.30-3.30	Judith Butcher 01993 824194
Burford & District Society	Meet 7 times a year	Warwick Hall at 7.00pm	Bert Clough 07943 720668
Burford Town Bowls Club	Friendly Roll-up all Mondays	Bowls Club from 6.30 pm	Pat Walker 01993 822330 patr47@btinternet.com
Burford Trees care/planting	4th Sunday of the month	Community Allotment - Tanners Lane	lucy.staveley@gmail.com
Coffee and Company	Every Wednesday 10.30-12 midday	St John the Baptist Church	Diana Peters 01993 822785
Cub Scouts	Mondays (term time)	Scout Hut 6 - 7.30 pm	Mandy Bielby 07941 470465
Fencing	Tuesdays	Bradwell Village 7-9pm	Keith Money 01982 448295
Fulbrook & Burford WI (FaBWI)	Second Tuesday of every month	Burford Baptist Church Hall	Jennie Craven 07710 103015 thefabwi@oxfordshirewi.co.uk
Fulbrook Coffee am	Every 3rd Thursday	Fulbrook Meeting Place 10.30 - 12	Lyn Bibbings 823640
Fulbrook Fitness Group	Thursday (wef Sept 2021)	Fulbrook Meeting Place 9am	Pat Ferrett 822892
Horticultural Association	Fourth Thursday	Bowls Club - times vary	Janet Copley 01451 844210
North Cotswold Arts Assoc.	Every 2nd Wednesday	Warwick Hall	2-4pm
Pickleball - fun, social sport	Mon 11-1pm, Thu 10-12pm, Fri 8-10pm	Charlbury Community Centre	Vijay 01993 891 043 or vijaysmobile@gmail.com
Pilates Class	Wednesdays 10.00am	Burford Baptist Church	Elizabeth Jarvis cotswoldpilates123@gmail.com
Pilates Class	Thursdays 9.30am. Suitable for men and women; Tuesdays 6.45	Warwick Hall	Elizabeth www.wellnessity.co.uk 07932 981023
Rhyme Time	Friday 9.15-10.00 am Term Times	Burford Library (for under 5's)	Carol-Amy Holdcroft 823377
Rock-a-Tots	Tuesday during Term Time 9.45-11.15	Warwick Hall	www.burfordchurch.org/rockatots
Rotary Burford & Kingham	Monday	The Burford Golf Club	John Smith 07717 883182
Signpost - Coffee and Help	Every Wednesday in term time.	The Warwick Hall, Burford 10.00 - 12 midday	Opportunity to raise worries confidentially
Scouts	Thursday (term time)	Scout Hut 6 - 8pm	Alex Gill 07762161769 burfordscouts@gmail.com
Scrabble	1st Tuesday of each month	Burford Library (free soft drinks)	7pm
The Arts Society Cotswolds	2nd Wed (not July/Aug)	Warwick Hall 11.00	publicity@theartsocietycotswolds
The Wychwood Lodge of Freemasons	3rd Thursday Sept-April	The Masonic Hall 31 Sheep Street	Mike 868302 / Allan 822240 wychwood988@outlook.com
Time Out	Monday 11.00am - 3pm lunch and afternoon tea	Warwick Hall inc games, bingo, singing, talks	John Harrington 822451 or Sue Sheppard 824729

## DIARY OF SPECIAL EVENTS

Thur 28 Nov	BDHA Talk - Planting Roses	Burford Bowls Club	2.15pm
Fri 29 Nov	Burford Christmas Market	Burford Parish Church	6-9pm
28-30 Nov	Wychwood Players - It's a Wonderful Life	New Beaconsfield Hall	
Sat 30 Nov	Christmas Lights Switch On	Burford Tolsey	3.30-4.15
30 Nov-1 Dec	Yunis and Eliza Bronze Artists	Asthall Manor	
Sun 1 Dec	Burford Civic Service	Burford Parish Church	3.30pm
Wed 4 Dec	Seasons Art Class Exhibition	Burford Bowls Club	1-3pm
Fri 6 Dec	History Talk - Blenheim Palace	Upper Rissington Village Hall	2.30pm
Tue 10 Dec	FABW1 Talk - Craft Barn Demonstration	Burford Baptist Church	7.30pm
Wed 11 Dec	TASC - History of Christmas traditions	Warwick Hall	10.50am
Thu 12 Dec	Coffee, Mince Pies & Company - Free! See advertisement	Davenford Tea Room Burford	10-12
Sun 22 Dec	Candlelit Carol Services - please book	Burford Parish Church	4.30 + 7.30
Tue 24 Dec	Midnight Communion Service	Asthall Church	11pm
Tue 24 Dec	Crib Service	Burford Parish Church	4pm
Wed 25 Dec	Community Christmas Day Lunch	Warwick Hall	2pm
Wed 8 Jan	TASC - Charles 1: King and Collector	Warwick Hall	10.50am
Thur 27 Feb	Friends of Burford Library Pub Quiz	Royal Oak, Burford	7pm
Sat 15 March	BEAGles Event - Land, Energy, Transport and Community	TBA	11-4

PLEASE remember to give us **DAY, DATE and TIME** when providing information about forthcoming events to ensure the full and correct details are published.

**It takes us a long time to look this up and we may not have the up to date information.**

Thank you.  
Editors

## USEFUL CONTACTS + INFORMATION

Please check hours of opening which are subject to change

**Burford Recreation Pavilion** (Children's Events) 01993 823647  
**Burford Pre School** 01993 824031  
**Burford School** 01993 823303  
**Burford Primary School** 01993 822159

**Burford Surgery** 01993 822176  
[www.burfordsurgery.co.uk](http://www.burfordsurgery.co.uk)

**Burford Tolsey Museum**  
 Open seven days a week  
 April to October 2-5pm  
[www.burfordtolsey.org](http://www.burfordtolsey.org)

**Burford Town Council**  
 Tolsey office open Monday, Wednesday and Friday between 9.30 am and 11.30 am  
 01993 823647  
 Email [town.clerk@burford-tc.gov.uk](mailto:town.clerk@burford-tc.gov.uk)  
[www.burford-tc.gov.uk](http://www.burford-tc.gov.uk)

**Carterton Health Centre NHS** 01993 841718  
 111  
[www.nhs.uk](http://www.nhs.uk)

**Centre for Carers in Oxfordshire** 01295 264545  
[www.oxoncarers.org.uk](http://www.oxoncarers.org.uk)

**Chemist** Reavley's 01993 823144  
**Chipping Norton Veterinary Hospital**  
 Burford Branch 01608 642547

**Churches**  
 Anglican St John the Baptist 01993 823788  
 Roman Catholic 01993 823219  
 Church of SS John Fisher and Thomas More  
 Baptist Church 07967 362885  
 Friends Meeting House 01993 875214

**Citizens Advice Bureau** 0808 2787908  
 Email [admin@cawo.org.uk](mailto:admin@cawo.org.uk)

**Community Transport**  
 Volunteer Link-Up 01993 776277  
 Oxfordshire Comet 01865 323201  
**Emergency Services**  
 Police – non essential 101

**Environment Agency**  
 Floodline 0845 988118  
 Emergency 0800 807060

*Please let us know if any details need amending.*  
[editor@thebridgeburford.co.uk](mailto:editor@thebridgeburford.co.uk)

**Hall Bookings**  
 Baptist Church [gill.crippen@googlemail.com](mailto:gill.crippen@googlemail.com)  
 Burford Town Bowls Club 01993 822330  
 Fulbrook Meeting Place TBA  
 Taynton Village Hall - Lexi Young 07909 913994  
 Warwick Hall Bookings and Information  
[bookings@burfordchurch.org.uk](mailto:bookings@burfordchurch.org.uk)

**Library** 01993 823377  
 Tuesday 13.00 - 18.00  
 Thursday 10.00 - 13.00  
 Friday 10.00 - 13.00 and 14.00 - 17.30  
 Saturday 09.00 - 13.00  
[www.oxfordshire.gov.uk/burfordlibrary](http://www.oxfordshire.gov.uk/burfordlibrary)

**Member of Parliament** 07487 708681  
[charlie.maynard.mp@parliament.uk](mailto:charlie.maynard.mp@parliament.uk)

**Oxfordshire County Council**  
 General Enquiries 01865 815573  
 Highways 08453 101111  
 Faulty Street Lights 0800 317802  
[www.oxfordshire.gov.uk](http://www.oxfordshire.gov.uk)

Oxfordshire County Councillor  
 Nicholas Field-Johnson 01993 878309  
**Post Office** 01993 822174  
[stephencolter@aol.com](mailto:stephencolter@aol.com)

**Recycling Centre**  
 Dix Pit, Lynch Hill, Stanton Harcourt  
 Open 7 days a week 8am - 5pm  
 Thursday late night until 8pm  
 Closed Christmas Day and New Year's Day

**Southern Electric** (Freephone) 08000 727282  
**Thames Water** 0800 3169800

**Travel**  
 Rail Enquiries 08457 484950  
 Public Transport Enquiries 08712 002233

**West Oxfordshire District Council**  
 General Enquiries 01993 861000  
 Out of Hours 01993 705056  
[www.westoxon.gov.uk](http://www.westoxon.gov.uk)

**West Oxfordshire District Councillor**  
 Hugo Ashton 07712 490517

**Witney Hospital Minor Injuries** 01865 903841  
 Open 10.00am – 10.30pm daily  
 Last Patient seen at 10pm

**Witney Police Station, No front counter**  
[www.thamesvalleypolice.uk](http://www.thamesvalleypolice.uk)

## DIRECTORY OF LOCAL BUSINESSES & SERVICES

### PARISH CHURCH SERVICES DECEMBER 2024 St John the Baptist, Burford

<b>01 December</b>	
Morning Service	11.00am
Civic Carol Service	3.30pm
<b>08 December</b>	
Matins (BCP)	9.30am
Holy Communion (CW)	11.00am
<b>15 December</b>	
Holy Communion (CW)	9.30am
Morning Service	11.00am
<b>22 December</b>	
Morning Prayer (CW)	9.30am
Morning Service	11.00am
Carols by Candlelight	4.30pm
Carols by Candlelight	7.30pm
<b>24 December</b>	
Crib Service	4.00pm
<b>25 December</b>	
Holy Communion (BCP)	8.00am
All age Service followed by Communion	11.00am
<b>29 December</b>	
Morning Service	11.00am

Join us every Wednesday at 10.30am for a Holy Communion Service in Burford Church followed by Coffee & Company.

#### St James the Great, Fulbrook

<b>08 December</b>	
Morning Prayer (CW)	9.30am
<b>15 December</b>	
Matins (BCP)	9.30am
<b>22 December</b>	
Holy Communion (BCP)	9.30am
<b>24 December</b>	
Carol Service	4.00pm
<b>25 December</b>	
Holy Communion (BCP)	9.30am

#### St John the Evangelist, Taynton

<b>01 December</b>	
Benefice Holy Communion	9.30am
<b>15 December</b>	
Carol Service	6.00pm
<b>25 December</b>	
Holy Communion (BCP)	9.30am
<b>08 December</b>	
Evening Prayer	6.00pm
<b>22 December</b>	
Evening Prayer	6.00pm
<b>24 December</b>	
Holy Communion	11.00pm

#### St Mary, Swinbrook

<b>01 December</b>	
Holy Communion (CW)	11.00am
<b>08 December</b>	
Morning Prayer (CW)	11.00am
<b>15 December</b>	
Morning Prayer (CW)	11.00am
Blue Christmas	3.00pm
<b>22 December</b>	
Carol Service	11.00am
<b>25 December</b>	
All age Service followed by Communion	11.00am

### St Oswald, Widford

<b>26 December</b>	
Carol Service	4.00pm

### JANUARY 2025 St John the Baptist, Burford

<b>5 January</b>	
Benefice Holy Communion (CW)	9.30am
Morning Service	11.00am
Evening Meeting	7.00pm
<b>12 January</b>	
Choral Matins (BCP)	9.30am
Holy Communion	11.00am
Evening Meeting	7.00pm
<b>19 January</b>	
Holy Communion (CW)	9.30am
Morning Service	11.00am
Evening Meeting	7.00pm
<b>26 January</b>	
Morning Prayer (CW)	9.30am
Morning Service	11.00am
Evening Meeting	7.00pm

Join us every Wednesday at 10.30am for a Holy Communion Service in Burford Church followed by Coffee & Company.

#### St James the Great, Fulbrook

<b>12 January</b>	
Morning Prayer (CW)	9.30am
<b>19 January</b>	
Matins (BCP)	9.30am
<b>26 January</b>	
Holy Communion (BCP)	9.30am

#### St John the Evangelist, Taynton

<b>19 January</b>	
Evening Prayer (BCP)	4.00pm

#### St Nicholas, Asthall

<b>12 January</b>	
Evening Prayer (BCP)	6.00pm
<b>26 January</b>	
Evening Prayer (BCP)	6.00pm

#### St Mary, Swinbrook

<b>5 January</b>	
Holy Communion (CW)	11.00am
<b>12 January</b>	
Morning Prayer (CW)	11.00am
<b>19 January</b>	
Morning Prayer (CW)	11.00am
<b>26 January</b>	
Morning Prayer (CW)	11.00am

### SERVICES IN DECEMBER FOR SS JOHN FISHER & THOMAS MORE -

Sunday Mass: 9.30 am  
 Weekday Masses:  
 Tuesday - 10.00 am  
 Thursday - 10.00 am  
 Christmas Eve - Carols followed by Mass during the Night at 9.30 pm  
 Christmas Day - Mass during the Day at 9.30 am  
 For updates please see [catholicchurchburford.org.uk](http://catholicchurchburford.org.uk) or the church notice board for details.

Company Name	Business Type	Phone
Antiques @ The George	Award winning, friendly antiques centre	01993 823319
CJD Architects	Chartered Architects	01993 823646
Hickman Brothers Landscapes Ltd	Garden Design and Construction, Landscape and Garden Supplies <a href="http://www.hickmanlandscapes.co.uk">www.hickmanlandscapes.co.uk</a>	01993 822226
Jenny Smith	Spanish & French tutor. Building confidence GCSE/KS2. Experience in schools; DBS check held.	07908 602547
Kendall & Davies Solicitors	Expert, friendly, client-focused legal services with offices in Burford. <a href="http://www.kendallanddavies.co.uk">www.kendallanddavies.co.uk</a>	01993 822025
Taylor and Fletcher	Estate Agents / Chartered Surveyors / Fine Art Auctioneers and Valuers / Commercial Agents / Rural Specialists	01993 220579
Mallams Auctioneers Ltd	Auctioneers and Valuers	01242 235712
Pauline Carter BA AmusLCM CTABRSM MISM	Piano Teacher	01993 774568
Peter Garratt	Painter and Decorator	01451 810376 07788 896496
StayCotswold	Holiday/Short Lets, Relocation, Corporate Stays, Property Search, Sales & Lettings. <a href="http://www.staycotswold.com">www.staycotswold.com</a>	01993 259444
Thomas Ellis-Rees	Clock & Barometer repairs. <a href="mailto:tellisrees@gmail.com">tellisrees@gmail.com</a>	01993 822132
Vick's Byway Garage	Bushey Ground, Minster Lovell, Witney, OX29 0SW. MOTs by arrangement	01993 823142
VJ Hancock & Co Ltd	Certified Accountants / Chartered Tax Advisers <a href="http://www.vjhaccountancy.co.uk">www.vjhaccountancy.co.uk</a>	01993 822817
Lionheart Later Life Planning and Probate	Wills – Lasting Powers of Attorney – Trusts and their registration – Fixed fee Probate – Equity Release and Free Financial Advice. <a href="http://www.lionheartlaterlifeplanning.co.uk">www.lionheartlaterlifeplanning.co.uk</a>	07769 730616.
EiWell	Physiotherapy, Occupational Therapy, Nutrition Helping people stay independent as they get older	01865 238185
Burford Foot Clinic	Chiropody Castles Yard, Pytts Lane, OX18 4SJ	01993 200980
Adam Carter Chauffeur Services	Local Private Hire Chauffeur <a href="http://www.adamcarterchauffeurservices.co.uk">www.adamcarterchauffeurservices.co.uk</a>	07920 135157
Tony Williams	Welding/Brazing/Soldering & Metalwork Home/Garden & General repairs & alterations	07722334696
Fairways Cotswold Explorer	for all your Airport & Cruise transfers	01993823152 07751472125
The Stone Gallery	Makers of Gold and Silver Jewellery, agent for Georg Jensen. Paperweights & Pictures. <a href="http://www.stonegallery.co.uk">www.stonegallery.co.uk</a>	01993 823302
NFU Mutual	Insurance   Pensions   Investments - Call your local Witney agency	01993 776716
Patti Good	Therapist, Teacher & Healer Free Online Guided Meditation Classes <a href="http://www.pattigood.com">www.pattigood.com</a>	07880 998568
Radnor Martin	Estate agents covering Burford and the surrounding villages	01993 765115
TC Garden Services	Gardening, Landscaping, Patios, Decking, Fencing & Gates, Raised Beds. Contact Tony for a free quotation. <a href="http://www.tcgs.uk">www.tcgs.uk</a>	07771 888304
Samantha James	Regarded organic - Private Hairstylist - Experienced. Email - <a href="mailto:samloujam@googlemail.com">samloujam@googlemail.com</a>	07772 601495
J Coles Plumbing & Heating	For all your plumbing emergencies/needs and bathroom refurbishments.	07947693427
Oxford Construction	Building, Groundworks and Project Management Services Email; <a href="mailto:enquiries@oxfordconstruction.co.uk">enquiries@oxfordconstruction.co.uk</a>	01865 922001
Grimebusters	Dirty carpets? Upholstery? Call Grimebusters - your local professional cleaners. Competitive rates. Free estimates.	01993 868924
Woodgrove Estates	Contemporary offices to let in Fulbrook. <a href="mailto:office@woodgrove-estates.co.uk">office@woodgrove-estates.co.uk</a>	01993 640004
Piano with Victoria	Lessons for all ages and abilities in Burford. ABRSM + improv / songwriting lessons.	07737493980
Funtastic French, Lou Rutterford	French Language Coach. <a href="http://www.funtasticfrench.co.uk">www.funtasticfrench.co.uk</a>	07913 905484

**HARRY JAMES**  
*Gardens & Landscapes*

Mobile: 07985 434080

email: [info@harryjamesgardens.co.uk](mailto:info@harryjamesgardens.co.uk)

[www.harryjamesgardens.co.uk](http://www.harryjamesgardens.co.uk)



**BAKERY ON THE HILL**

Classic Fresh-Baked British Loaves, Breakfast Favourites, Artisan Coffee, Scrumptious Toasted Sandwiches, Quiches and Home-Baked Pastries.

There's always something to enjoy at Burford's Bakery on the Hill.

Open 7 Days a week from 8am-5pm

53 High Street, Burford  
01993 823898

Google ★★★★★



*Seth*  
**DIXON**  
• DESIGN & BUILD •

**Your Planning, Building & Renovation Partner**

From a simple extension, delicate renovation to a new build  
Applying traditional styles within modern day building techniques  
Individual bespoke ideas and plans  
Vigorous cost management

*Making your dreams a reality*

**07793 74 73 72**  
[info@sdd-b.com](mailto:info@sdd-b.com) [www.sethddb.com](http://www.sethddb.com)

*Call for a no obligation chat to discuss your plans*

**FOR YOUR LOCAL GENERAL BUILDING REQUIREMENTS**

**GENERAL BUILDER**  
**RENOVATIONS**  
**EXTENSIONS**  
**ALTERATIONS**  
**IVOR LAVERS**

**SPECIALIST IN DRY STONE WALLING**  
**BRICKWORK - BLOCKWORK**  
**PLASTERING - ROOF REPAIRS**  
**INTERNAL AND EXTERNAL PAINTWORK - LANDSCAPING**  
**TILING - CARPENTRY**

**BASED IN BRIZE NORTON**  
**HIGHLY RECOMMENDED**  
**REFERENCES AVAILABLE**  
**07866 748481**

**Peace of Mind While You're Away?**  
**Local House Sitter**

Experienced, trustworthy, personalised service

**Security:**  
your home doesn't look empty  
Mail, parcel & bin management

**Domestic Emergencies:**  
minimise effects of adverse weather

**Pets:**  
happier at home with their routine

**Trusted Professional:**  
Fully insured, DBS checked, excellent references from satisfied customers

contact: [helen@propertyandpetcare.co.uk](mailto:helen@propertyandpetcare.co.uk)  
[www.propertyandpetcare.co.uk](http://www.propertyandpetcare.co.uk)



EST. 1734  
**REAVLEY**  
— CHEMIST · BURFORD —  
*England's oldest pharmacy*

- NHS & Private Prescriptions
- Professional Lifestyle & Healthcare Advice
- Wide Range of over the Counter Medicines
- Stockists of Premium Beauty Brands
- Private Consultations
- Flu & Covid Vaccinations (Seasonal)
- Traditional Remedies
- Yellow Fever Centre
- Travel Clinic Consultations & Vaccinations
- Delivery Service Available

Open 6 days a week | Monday – Friday 9am – 6pm | Saturday 9am – 5pm  
Reavley Chemist, 124 High St, Burford OX18 4QR | 01993 823144 | [info@reavley.co.uk](mailto:info@reavley.co.uk) | [www.reavley.co.uk](http://www.reavley.co.uk)

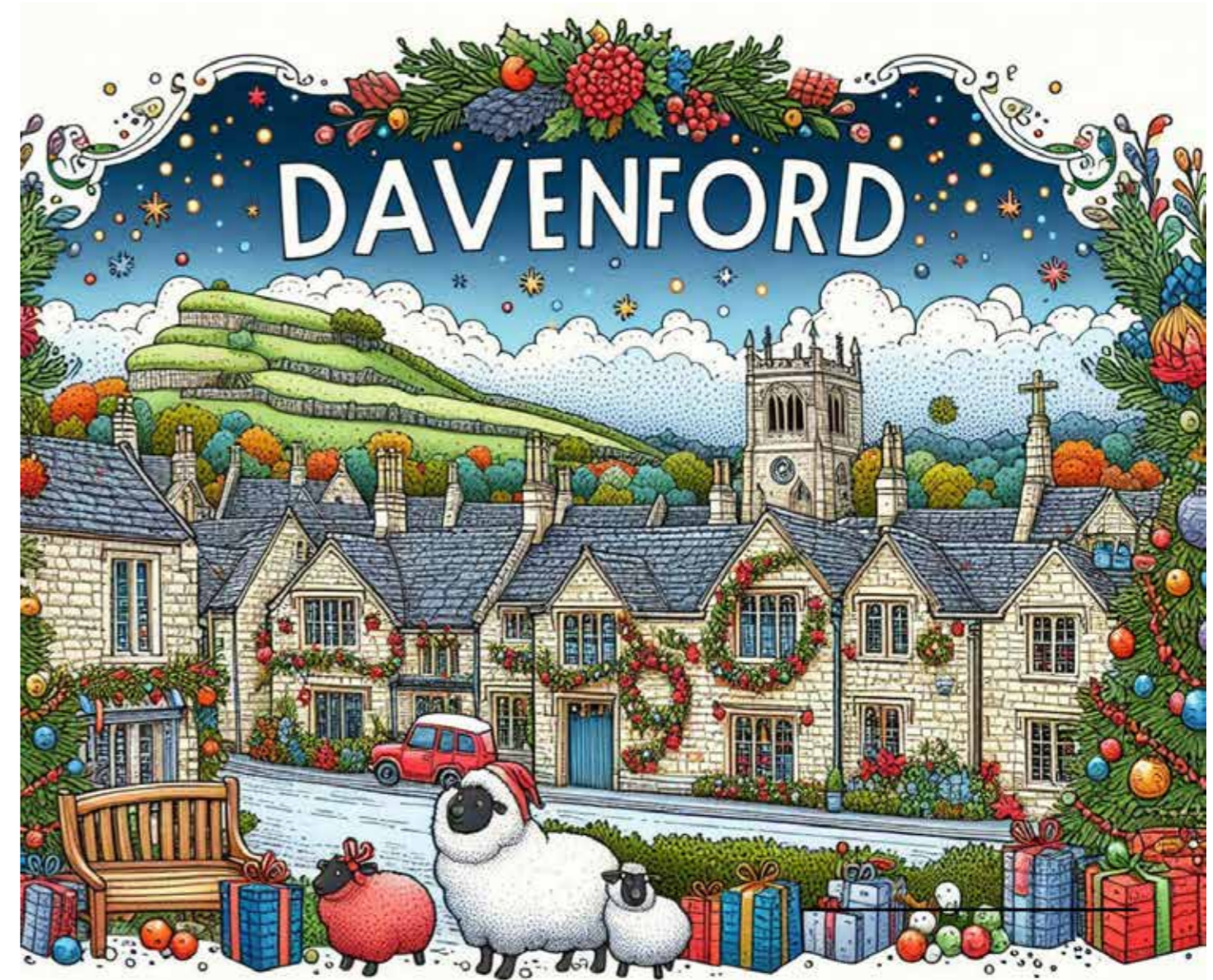


**Book a visit and enjoy a complimentary afternoon tea**  
 at Cotswold Gate Care Home

To RSVP or to find out more, visit [porthaven.co.uk](http://porthaven.co.uk) or call 01993 222800

34 Forest Grove, Burford OX18 4FF

NURSING • RESIDENTIAL • DEMENTIA • RESPITE

## CHRISTMAS AT DAVENFORD

December Weekend Workshops

- Christmas Biscuits & Mince Pies
- Afternoon Tea
- Sourdough baking & Lunch

Merry Christmas

FROM ALL AT DAVENFORD

12 December 10am-12pm

Merry Mornings: Coffee, Mince Pies & Good Company. FREE EVENT

An invitation to all of our local retirees to join us for a festive morning.

136-142 High Street, Burford Tel 01242 382061 [www.davenford.com](http://www.davenford.com)



## Gateway Furniture & Design Burford

A solid oak table with square tapering legs - can be made to any size in various finishes to your own specifications - 6 week delivery

Tables built to your own specifications in 6-8 weeks

Monday-Saturday 10am-5pm,  
Sunday 1pm-4pm

Cheltenham Road, Burford Roundabout,  
Burford, Oxon OX18 4JA  
01993 823678

Our online brochure can be downloaded from our website  
[www.gatewayantiques.co.uk](http://www.gatewayantiques.co.uk)

# E TAYLOR & SON FUNERAL DIRECTORS

Private funeral home  
Memorials supplied and renovated  
Here to help 24 hours per day

**01993 842421**  
Corbett Road, Carterton, OX18 3LG



## COTSWOLD INNS & HOTELS



↔ A COLLECTION OF SEVEN 3 & 4 STAR HOTELS ↔

↔ ALFRESCO DINING ↔

↔ SECLUDED GARDENS ↔

↔ ROSETTE AWARDED RESTAURANTS ↔

↔ PERFECT WEDDING & CONFERENCING LOCATIONS ↔

TO MAKE A RESERVATION PLEASE EMAIL  
[enquiries@cotswold-inns-hotels.co.uk](mailto:enquiries@cotswold-inns-hotels.co.uk)

or book online at [www.cotswold-inns-hotels.co.uk](http://www.cotswold-inns-hotels.co.uk)



The Bear of Rodborough  
Stroud  
T 01453 878522

The Swan Hotel  
Bibury  
T 01285 740695

The Lamb Inn  
Burford  
T 01993 823155

The Bay Tree Hotel  
Burford  
T 01993 822791

The Manor House Hotel  
Moreton-in-Marsh  
T 01608 650501

The Hare & Hounds Hotel  
Tetbury  
T 01666 881000

The Close Hotel  
Tetbury  
T 01666 502272

Thinking of selling  
your Art, Antiques  
or Jewellery?

**Mallams**  
1788

Come along to one of our salerooms for a free valuation.

For the full list of our services, please scan  
the QR code or visit: [www.mallams.co.uk](http://www.mallams.co.uk)



[www.mallams.co.uk](http://www.mallams.co.uk)

**OXFORD**

01865 241358

**CHELTENHAM**

01242 235712

**ABINGDON**

01235 462840

**BURFORD**

01865 241358

AUCTIONEERS AND VALUERS SINCE 1788

HAND CRAFTED WITH LOVE

PROJECT AT BROOKSIDE COTTAGE



*Merry Christmas*

BURFORD KITCHENS  
& INTERIORS



*C P Home Improvements*



*C P Home Improvements ... just a phone call away!*



*Windows & Doors  
Bi-fold Doors  
Conservatories  
Orangeries  
Soffit Facia & Guttering  
Replacement Blown Units*



*Tel .... Call Chris on 07980 881104  
Highly Recommended by the residents of Burford*

**IS YOUR HOUSE WATERTIGHT?**

Get ahead of the game by calling now for a free "roof MOT".

- Get your roof inspected with photographic evidence.
- Gutters, downpipes & valleys checked & tested.
- Moss removal, treatment & solar panel washing.
- All manner of roof repairs with not scaffolding!
- Bird proofing, living roofs, loft insulation, asbestos removal.
- We are certified Velux installers, endorsed by "TrustMark"

If it's on your roof, it's our business!

Don't get caught out in the rain, get it done!

[www.roofmot.com](http://www.roofmot.com)

[info@roofmot.com](mailto:info@roofmot.com)

Call Tosh on 07928 511 444 for your free advice.

Or Forbes on 07904 229 370 to book an appointment.

**Barguss**  
CONSTRUCTION LTD

*Historic and listed building specialists*

Restoration ▪ Extensions ▪ Decorating ▪ Refurbishment

The Old Bell Foundry  
45 Witney Street  
Burford  
Oxfordshire  
OX18 4RX



Tel: 01993 824703  
email: [office@barguss.co.uk](mailto:office@barguss.co.uk)  
web: [www.barguss.co.uk](http://www.barguss.co.uk)

MOVE TO FEEL WELL

MATWORK:  
WEDNESDAYS, FRIDAYS 9:30 AM  
MONDAYS, THURSDAYS 6:00 PM

PILATES STUDIO  
REHAB AND INDIVIDUAL WORK

AUDRI SCHAAY  
Manual Therapist & Massage

CLINICAL & SPORTS MASSAGE

ENQUIRIES AND BOOKINGS:  
07741 182958 - [widi@audrischaay.com](mailto:widi@audrischaay.com)

OXFORD PARK, UNIT 1  
TERRACE, OX1 1BB



Architectural practice which combines sensitive, imaginative building and garden design with technical expertise and project management skills, all tailored to suit client requirements.

We operate within The Cotswolds, Woodstock and Oxford, and have a positive relationship with Local Authorities. Please call for an initial, no-obligation discussion and site visit.

Panton Architectural Design, Wood Farm Studio, Woodleys, Woodstock OX20 1HN

t: 01993 810704 e: post@pantondesign.info w: pantondesign.info



4th December 2024



**Mozart Clarinet Quintet**  
David Campbell (clarinet)

**The Bochmann Trio**  
Michel Bochmann - Violin  
Carol Hubell-Allen - Viola  
Nicky Tait-Baxter - Cello  
with Ruth Schulten - Violin

Mozart Divertimento in E flat for string trio K 563  
Mozart Clarinet Quintet K 581

**7:00 pm Burford School**

Tickets £20  
[www.lenthallconcerts.co.uk](http://www.lenthallconcerts.co.uk)  
[www.ticketsource.co.uk/the-lenthall-concert-society](http://www.ticketsource.co.uk/the-lenthall-concert-society)



*Amanda Hanley*

*Bespoke Interior Design  
with Showroom in Burford*

Upholstery & Furnishing • Fabrics • Bespoke Kitchens & Cabinetry • Furniture

33 High Street, Burford, OX18 4QA  
01993 822 680 07976 353 996 amanda@amandahanley.co.uk www.amandahanley.co.uk

# RADNOR MARTIN

*your property buying, selling & search agency*

## MERRY CHRISTMAS & HAPPY NEW YEAR

01993 765115

office@radnormartin.com www.radnormartin.com



Hickman Brothers Landscapes Ltd



## GARDEN & LANDSCAPE SUPPLIES

Shop online at [www.hickmanlandscapes.co.uk](http://www.hickmanlandscapes.co.uk)



Contact us on - 01993 822226

[sales@hickmanlandscapes.co.uk](mailto:sales@hickmanlandscapes.co.uk)



### Opening Times

Monday - Friday 07:30 - 17:00

Saturday 08:00 - 14:00

## SKIP & PLANT HIRE



Hickman Bros Landscapes, Shipton Hill, Fullbrook, Burford, OX18 4BZ