

# THE BRIDGE

October 2024



**Burford Parish Church and the Warwick almshouses by night photographed by Alastair Thomas**

This monthly magazine covers people and events in our area of the Cotswolds, and is delivered free of charge to residents and businesses in Aldsworth, Asthall, Asthall Leigh, the Barringtons, Bradwell Village, Burford, Field Assarts, Fordwells, Fulbrook, Holwell, Northleach, Sherborne, Shilton, Signet, Swinbrook, Taynton, Upton, Westwell, Widford and Windrush with a wider national and international readership.

*Volume 15, Number 9, £1.50.*



*Amanda Hanley*

*Bespoke Interior Design  
with Showroom in Burford*

Upholstery & Furnishing • Fabrics • Bespoke Kitchens & Cabinetry • Furniture

33 High Street, Burford, OX18 4QA

01993 822 680 07976 353 996 amanda@amandahanley.co.uk www.amandahanley.co.uk

**HARRY JAMES**

*Gardens & Landscapes*

Mobile: 07985 434080

email: [info@harryjamesgardens.co.uk](mailto:info@harryjamesgardens.co.uk)

[www.harryjamesgardens.co.uk](http://www.harryjamesgardens.co.uk)

**corky & prince**

WEDDING & EVENT FLOWERS



*Luxury Christmas  
Wreath Workshops*

**Saturday 7th December 2024**

Warwick Hall, Burford Church, Burford

**Morning Workshop - 10am to 12am**

**Afternoon Workshop - 2pm to 4pm**

£75 per person including all materials, dried flowers, spices and velvet ribbons plus a glass of fizz and festive nibbles.

To book call Fi on 07740 589640 or email

[hello@corkyandprince.com](mailto:hello@corkyandprince.com)

Ready made wreaths also available to pre-order. Please see our website for details. [www.corkyandprince.com](http://www.corkyandprince.com)

**01993 220 579**

[burford@taylerandfletcher.co.uk](mailto:burford@taylerandfletcher.co.uk)

**Tayler & Fletcher**



**SOLD**



**SOLD**



**SOLD**



**James Skinner**  
Residential Sales Manager



**Alison Denny**  
Residential Sales



**Celebrating 5 years in Burford**

Providence House, 49 High Street, Burford, Oxfordshire, OX18 4QA

## EDITORS' NOTES

### Dog's Dinner

We read somewhere that there was once a competition to write the perfect newspaper headline containing all the ingredients that make up an eye-catching title. The winner which ticked the most boxes was "SEX-CHANGE BISHOP IN MERCY DASH TO PALACE."

Not the sort of heading that we are ever likely to need in The Bridge. However the press had a field day around the opening of Jeremy Clarkson's new hostelry, formerly the Windmill and now the Farmer's Dog. We haven't yet been there but from what we gather it appears that the opening weekend went reasonably well and there weren't the gargantuan traffic jams that accompanied the opening of his farm shop. Whatever you think of Clarkson (and we are sure that most of us do), at least he is doing his bit to promote British farming, only serving food produced in this country. This extends to banning coffee, avocados and tomato ketchup, although we are told that there is an excellent version of the latter produced by Tiptree in Essex.

We are normally happy to help promote new businesses opening in our area. But who needs help when you have eight million followers on X/Twitter?

One question remains. How do we now refer to the Windmill roundabout? Farmer's Dog roundabout doesn't exactly trip off the tongue.

### Jamming

Our unscientific impression is that there was even more traffic than usual in Burford this summer, with the High Street regularly blocked even in midweek, sometimes in both directions. Good for local businesses, as long as enough stop off to shop here, but not so good if you want to get somewhere. It must be very trying for residents of Fulbrook and other villages north of the Windrush if they have to queue for 20 minutes to get over the bridge. At least it's better than in Bibury which, according to the BBC website, gets up to 10,000 visitors per day, some arriving in around 50 coaches. They have two coach parking spaces. On odd occasions we have driven through while going somewhere else and have noticed that practically all the houses have cones outside to prevent parking, and apparently there have been altercations and even fisticuffs between locals and coach drivers. The thing is, it doesn't look as if there is an awful lot to do there. Once you have taken the obligatory selfie in front of the Arlington Row Cottages and bought an ice-cream, that's about it. So unlike the delights on offer in our own dear town. The Trip Advisor website lists 46 regular coach tours to this area from other parts of the country. Where will it all end? We simply ask the question.

### On the Buses

Thinking of coaches brings to mind buses. Have you ever used the S2 bus to Oxford or Cheltenham? The service was beefed up a little while ago and there are now buses roughly every two hours. It's not perfect because you have to plan your visit in units of around two hours to fit in with the timetable; miss one and you have to hang around for that period to get the next one. But it takes you into the centre of town without having to find and pay for somewhere to park. On the top deck you can relax and look at the countryside which you only glimpse while driving. And you are doing a little bit to slow down climate change. Worth a try?



## BURFORD TOWN COUNCIL

August, a quiet month.....

We now have the 15 bollards installed on The Hill. At present, they are a mix of colours as we test out the various conservation colours to see which suits best. Hopefully by the time you read this the council will have agreed a colour, and they will all be painted. The areas have been seeded, and with the rain we are getting in early September, it should germinate well.

There has been some vandalism over the summer on the recreation ground and new play area. It seems to occur late at night, with many beer cans scattered around in the morning. Our lengthsman, David, clears up, but the damage to the dry-stone walls where stone is taken to make fire surrounds and also to create patterns with beer cans is worrying. The damage to the play equipment will need proper repairs, and take some items out of action until we can get qualified repairers and parts to fully repair the equipment.

The proposal to make a safer pedestrian crossing on Burford bridge has not progressed over the summer; once a proposal is agreed by OCC and the Fulbrook and Burford councils, we then need to get listed building consent from WODC, so it could be a while until we see any improvement.

The owner of 121 High Street (ex The Copper Kettle, then Hacketts), which is in urgent need of repair, has now come to the UK briefly and is planning the very necessary repairs. I will do all I can to encourage him to make the building safer and more presentable, as it really lets down the look of that area of the High Street and is damaging neighbouring properties. The building is a Grade 2\* listed wood-framed building, so any repairs need to be agreed by WODC conservation. I hope that will not create too many delays.

The opening of The Farmer's Dog Pub with its Farmer's Dog Puppy and Diddy Squat Farm Shop has not made a great deal of difference to Burford. It appears popular, and I hope it goes well.

*Peter Higgs*



\*\*\*\*\*

## BURFORD & DISTRICT HORTICULTURAL SOCIETY

Horticultural Society members met in the garden of Penny and Nigel Barraclough on a sunny evening in August to enjoy one another's company, have nice eats and drinks, admire a beautifully kept and interesting garden and congratulate winners of cups from the recent show. An annual event, it is a really pleasant way to round off the summer.

September saw us learning more about propagating plants. October will be all about "plants for awkward corners", and November about planting roses - and quite possibly about enjoying the first mince pies of the season. All meetings are on the third Thursday of the month at 2.15 at the Bowls Club on Tanners Lane.

Now is the time also to get bulbs planted, with one eye on your own displays, and the other on the Spring Show, which includes classes for narcissi/daffodils, tulips and lots else. It would be great to have new participants at that event in April 2025. The show schedule and membership information are at [burfordhorticultural.com](http://burfordhorticultural.com)

*Ruth Reavley*

## THE ARTS SOCIETY COTSWOLDS

Lecture on Wednesday 9 October

### The Irritating and Influential Mr Whistler

An American artist in London, James Abbott McNeill Whistler was a leading proponent of the idea of "art for art's sake". He signed his paintings with a stylised monogram of a butterfly with a long stinger for a tail – as much a symbol of his love of Japanese art as his assertive and sometimes combative nature.



Having lived and worked with the Paris avant-garde, he settled in London in 1859 having created a distinctive Post-Impressionist style at a time when many of his British contemporaries had yet to come to terms with Impressionism. Whistler's art moved painting towards abstraction, sparked a renaissance in printmaking and gave us the Peacock Room, a masterpiece of interior design.

Inspired, influential, and infuriating, his art was full of subtle delicacy, he had a wide social network of friends and family and yet, if crossed, could be a formidable opponent. He mastered the art of making enemies.

Julia Musgrave got her first degree in Chemical Engineering and went on to become a Chartered Information Systems Engineer and IT project manager. In 2008 she concluded that life was too short for just one career and decided to become an art historian. She now has a graduate diploma in the History of Art from the Courtauld Institute of Art and an MLitt in Art, Style and Design: Renaissance to Modernism, c.1450 – c.1930 from the University of Glasgow. She gained her PhD at the University of York for her research into the involvement of Roger Fry and the Bloomsbury Group and the social networks of the British art world in the development of the Contemporary Art Society from 1910 to 1939. She teaches Art History at the City Literary Institute (City Lit) and is co-director of The London Art Salon.

This hybrid lecture will be held at the Warwick Hall, Church Green, Burford, OX18 4RZ at 11am and via Zoom. Please be seated by 10.50 for notices of upcoming events. Numbers are no longer restricted but booking is recommended to reserve a place via our website (see below). Non-members are welcome (space permitting) at a charge of £10.

### Special Interest Day on Wednesday 23 October 2024

#### The Seine: River of Light and Artists' Delight – Home to Impressionism with Carole Petipher

This wonderful river in France, often referred to as the River of Light, was a great influence on the 19th century artists and the development of Impressionism. It was the estuary which first attracted them, then the area west of Paris which became known as the Cradle of Impressionism and artists came in their droves to seek inspiration. This series of three lectures follows the course of the river and the artists' exploits along it and will aim to uncover new revelations.



**Lecture 1:** The Seine estuary – Beginnings

**Lecture 2:** The ups and downs of the Impressionists in their early careers along what is termed the Cradle of the Seine

**Lecture 3** The Path to Success

Carole Petipher acted as a guide for twenty years in France leading tours specialising in art and history. Through that work she lived and worked on a number of converted barges and bespoke river vessels on the Seine and Paris Basin and confesses that the Seine is very much flowing through her veins. These vessels have proved a perfect moving study and research platform; she has literally walked in the footsteps of those much-loved artists, the Impressionists, and built-up an in depth knowledge and great admiration for them.

The Special Interest Day consists of three sessions, two in the morning, followed by lunch and then another session in the afternoon. It is a smaller event and an opportunity to get to know other attendees over lunch. The day will be held at the Warwick Hall, Church Green, Burford, OX18 4RZ at 10.45am, finishing at 3.00pm. Doors open at 10.15am, with coffee being served. Numbers are restricted so booking is essential to reserve a place via the website (see below) or contact [programme@theartsocietycotswolds.org.uk](mailto:programme@theartsocietycotswolds.org.uk) or call Alison Morgans on 07771 817050 for a booking form. Charge: £42 for members. Non-members are welcome (space permitting) at a charge of £44.

To learn more about The Arts Society Cotswolds and to see what lectures, Special Interest Days and other activities are planned, please visit the website [www.theartsocietycotswolds.org.uk](http://www.theartsocietycotswolds.org.uk) or contact Carolyn Walton on 01993 822296

*Alison Morgans*

## Windrush Christmas Fair



**11.00am - 3.00pm  
Saturday, 19th October**

**Windrush Village Hall, OX18 4TT  
Opposite the red phone box.**

Coffee & cakes, gifts, clothing, original art, food & drink, textiles, jewellery, fashion accessories, bric-à-brac, portraits and more!

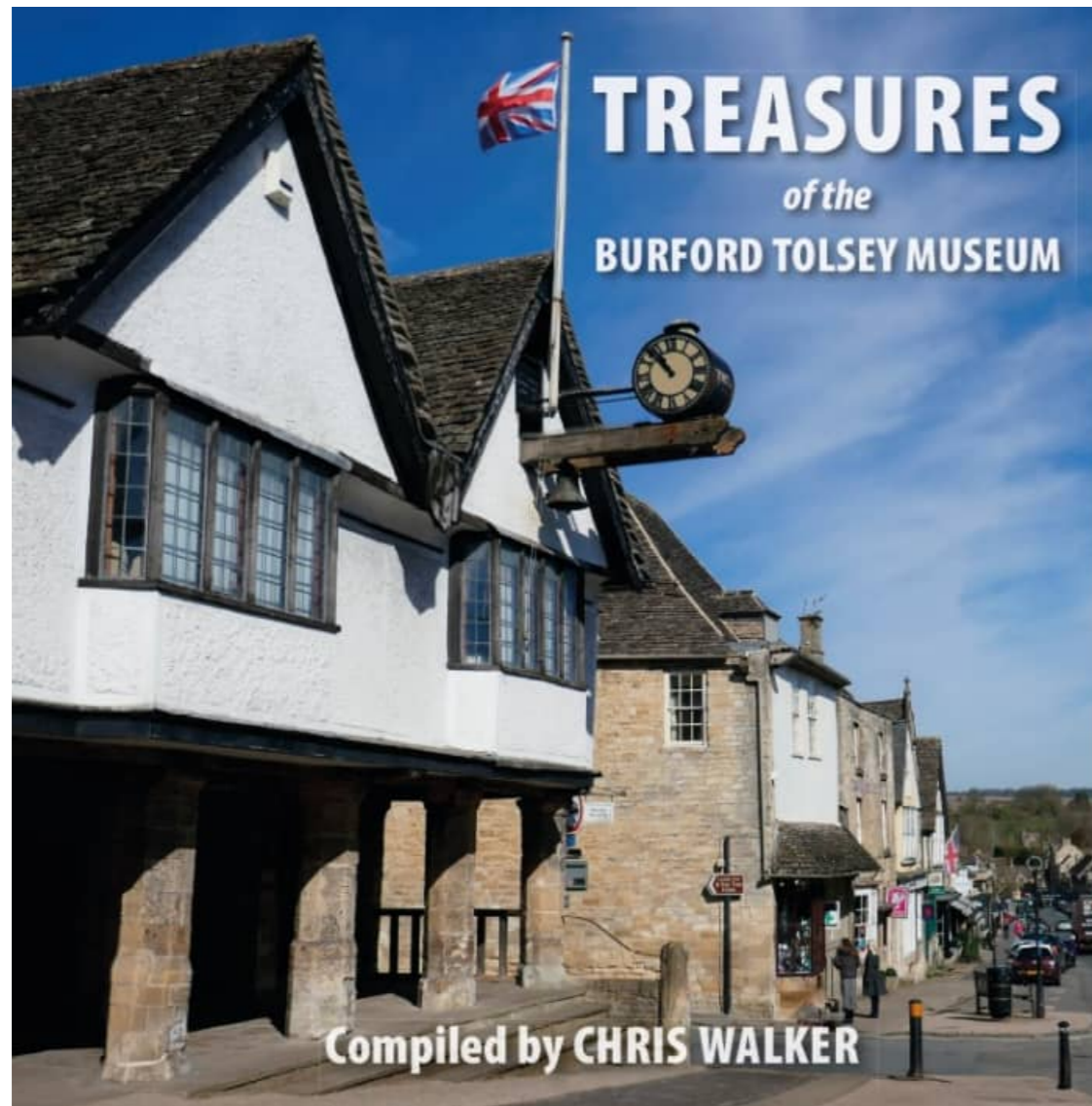
**All welcome! Please bring cash for raffle & coffee!**



# BURFORD TOLSEY MUSEUM & ARCHIVE

## Treasures of the Burford Tolley Museum

It is with pleasure and excitement that we announce that the book launch reception for the *Treasures of the Burford Tolley Museum* will take place at 7.30pm on Thursday 7 November at the Baptist Church, Burford.



This new, lavishly illustrated book, with 98 full colour pages, is the first to be published by the BTMA's newly established Tolley Press. Once released it will be available to order from all booksellers and online, including Amazon, but it will be offered at a special price that evening, when you will be able to choose between a hardback or a paperback edition. It will make a splendid Christmas stocking filler.

The descriptions of the featured items were compiled by Chris Walker, a remarkable local historian. Throughout his life, he dedicated much of his time and energy to acquiring objects of local historical interest. It was a delight to him to be able to share his carefully collected treasures in the Tolley Museum for all to appreciate and enjoy. This book is dedicated to his memory.

Come and join us for this major milestone event and enjoy selected highlights of the book, which will be delivered by a range of local speakers. Tickets to the launch can be bought online, [www.burfordtolsey.org/events](http://www.burfordtolsey.org/events), or in person at the Museum. They cost £3 per person or £5 for a couple, and are inclusive of a glass of wine.

*Peter Martin*

## BOOK REVIEW

### Treasures of the Burford Tolley Museum compiled by Chris Walker

Burford has been fortunate in its historians. The maces, seals and muniments (deeds) of the Burford Corporation, which was dissolved in 1861, were preserved by Dr T.H. Cheatle, son of the last alderman. From 1920 onwards Richard Gretton and his wife Mary Sturge Gretton published books on the history of the town, and the latter gathered together a collection of remnants of Burford's past. She was helped by Roger Warner who discovered many more remnants which were added to hers and the collection was the core of the Tolley Museum which opened in 1960. That same year Raymond and Joan Moody moved to the town and began to research the history of the area, their labours bearing fruit in a series of books on various aspects. Meanwhile Chris Walker became chairman of the museum committee and helped it to acquire significant new items.

When we took over editing *The Bridge* Chris was already a regular contributor to the magazine and he continued to send us monthly articles explaining the origins and purposes of a wide range of exhibits until his untimely death earlier this year. Now his enormous contribution to the museum and the town is recorded in this book, although sadly he will not be here for its publication next month.



Martha's job application



Mr Bond the bell founder



Mr Bowl the saddler

The book describes around 60 items from the museum divided into five sections: Arts and crafts, Commerce and manufacturing, Everyday life, Notable people and Events and Rural life. Each piece is briefly described, its purpose where necessary is explained, it is illustrated together with other images to put it in context and there is an account of how it was acquired by the museum. Probably most people will dip into the book and see what attracts their interest, but anyone reading it from cover to cover will find a series of fascinating vignettes of local life over several centuries.

And what a tough life it was. One of the more touching exhibits is a needlework sampler. Young girls in orphanages were taught sewing so that they could support themselves by becoming seamstresses and they made samplers to show their skills, a bit like a cv. This one appears to have been made by a girl called Martha but also shows the names of the other girls who shared the same dormitory together with their bed numbers. One wonders what became of them in later life. Iron steps found in the chimney of what is now the Co-op were installed so that young children could climb up to dislodge soot. There is information about the smallpox epidemic of 1758 when 247 burials were recorded in the parish register compared with a normal annual average of 39. Then there are images of the September hiring fair when farm workers and domestic servants would gather in Sheep Street to seek employment. In effect they had to re-apply for their jobs every year - no unfair dismissal laws then. This continued until 1914.

One of the oldest items is the seal of the Burford Corporation from about 1250. The iron-bound chest in which the town records were stored has been tested and dated to the early 15th century and, surprisingly, was made in Germany or Poland. An interesting document relates to a radio broadcast made in August 1922 to the Mitford family from Marconi House in London. The BBC only started broadcasting in November that year but before that there was a handful of enthusiastic amateurs who had already obtained radio sets.

Then there are the people you meet who are like a game of happy families: you will encounter Henry Bond the bell maker, Henry Holland the firearms manufacturer, Abiah Daniel the flax-dresser and William Bowl the saddler. Burford was once a hive of manufacturing industry. Four farm workers from Widford pictured from 1867 look as if they could have stepped out of the pages of a Hardy novel.

We could go on, but you will get the picture. This is a fascinating book, beautifully illustrated in a glossy hardback format but also available as a paperback or as an ebook. It will be launched in November and we recommend it to anyone with even a passing interest in local history. It would also be a great Christmas present. We hope the Tolley Museum has ordered lots of copies.

*Gordon Elliot*

The weather just about stayed dry for our August garden party. We enjoyed our introduction to the local Oxfordshire pub game of "Aunt Sally". We found out from our hosts there are leagues in local pubs. It is played by players throwing batons at a wooden skittle known as a doll and goes back at least as far as the 17th Century. It was quite challenging, and I don't think any of us apart from the finalists, Corrine and Diane, would have made a pub team. They had a play-off for a bottle of bubbly and Corrine provided another win for the Cotswold Gate ladies, who seem to be winning all the WI competitions!

Our 8 October meeting is our usual harvest festival bring-and-share supper with a competition on anything pumpkin-related. So, we look forward to seeing a wealth of interesting and creative pumpkins.

At our 12 November meeting, we welcome Janine Kilroe, who is an award winning professional fine art photographer who has worked with organisations such as the National Trust and the British Tourist Board. Her talk is about "An Introduction to the Pre-Raphaelite Sisterhood".

Come and discover the little-known artworks of the Pre-Raphaelite Sisterhood. The women of the Pre-Raphaelite sisterhood have gone down in history as muses. Despite being artists in their own right, they are remembered as symbols, rather than creators, of beauty. "Pre-Raphaelite Sisters" centres on 12 women - among others, the roster includes Christina Rossetti, Effie Millais and Elizabeth Siddal - and their contributions to the male-dominated narrative between 1850 and 1900. It proves to be an interesting reshaping of perceptions of these individuals as creative artists and poets who advocated for their own stories to be told rather than simply objectified muses. So let us celebrate the Sisterhood! Janine herself has an interesting history and her family owned the Derwent Pencil factory from 1907 to 1916.

We are always keen to welcome new members and guests are always very welcome to any of our meetings for a suggested donation of £5. So, we look forward to welcoming any of you interested. The FaB WI meets on the second Tuesday of each month in the Baptist Chapel in Witney Street at 7.30 p.m. For further information please visit our website [thefabwi.org.uk](http://thefabwi.org.uk) or contact our president, Jennie Craven, on [thefabwi@oxfordshirewi.co.uk](mailto:thefabwi@oxfordshirewi.co.uk) or mobile 07710 103015.

*Jennie Craven*

\*\*\*\*\*

## WOOD CHIPPINGS FOR ASTHAL PARISH COUNCIL

On 6 September we were lucky to receive some free wood chippings for Water Close, Asthall Leigh. This was perfect timing for the 15 volunteers who came along to help tidy the seating area and paths in Water Close in September. It was lovely to have volunteers from all ages from teens to 80s. A huge thanks to everyone who came along to lend a hand. The weather was kind to us and in three hours we were able to make a real difference. The seating area around the top of the site and all the paths have been cleared. Do come along and enjoy sitting or walking in Water Close.

If you have any wood chippings please let us know, we could always use them!

*Lynne Hughson*

## WHAT'S ON AT ASTHALL MANOR



We have an eclectic and exciting range of events coming up at Asthall Manor, reflecting our key focus on what we can all do for nature and climate and how we can nourish ourselves as we do so. Details and booking can be found on our website.

**29 September** – family-friendly Bug Safari, including making your own bug hotel.

**12 October** - Survival Ecology – a day of environmental, social and psychological adaptation. Can include sauna.

**19 October** – Kitchen Garden workshop - Understanding Soil.

**19 October** - Nature Rights - a compelling journey through the human relationship with nature, from 6000BC to the present day.

**16 November** – Kitchen Garden workshop - Gardening with wildlife.

**23 November** – Christmas in the Ballroom – a bazaar with gifts and food and drink from local artisans, along with vintage items.

**30 November** and **1 December** - Yunus & Eliza – Asthall's resident artists showing their nature-inspired work in cast bronze.

For details and booking: [asthallmanor.com](http://asthallmanor.com)

Or email us: [info@asthallmanor.com](mailto:info@asthallmanor.com)

*Rosie Pearson*

## CRAFT IN ACTION

**Warwick Hall, Burford**  
**Saturday 26 October 2024 10am – 4.30pm**

This will be the last time Craft in Action will be at Warwick Hall in 2024.

The group would like to express their thanks for the custom, from locals and tourists, this year and for the support from The Bridge Magazine.

Come along and start your Christmas Shopping and see what the crafters have to offer. Craft in Action pride themselves on having handmade crafts available, so you will see genuine crafters behind their tables.

Entry is free, dogs are welcome & there is easy access for wheelchairs

Facebook @ Craft in Action, Website @ [craftinaction.co.uk](http://craftinaction.co.uk)

We look forward to seeing you again 2025.

*Helen Wallis*

## BURFORD ENVIRONMENTAL ACTION GROUP aka BEAGles

The last BEAGles Repair Cafe was a great success - 21 visitors brought 44 items for repair or sharpening and we dealt successfully with 40 of them. Our next Repair Cafe will be on 2 November at St John's Church Hall in Carterton (the previous organisers are not able to continue and have asked the BEAGles to take over from them).

We are always in need of volunteers - if you can wield a screwdriver or can help with organisation or refreshments we would be most grateful. Repair Cafes are also scheduled for Milton-under-Wychwood (1 December) and Stonesfield (7 December).

In other news, a recent talk by a like-minded group in Shipton, Wild about the Wychwoods, has highlighted the threats to two of our most beloved native species, hedgehogs and swifts.

It is estimated that hedgehogs have declined by two thirds – down from an estimated 1.5 million in the mid-1990s to a mere 500,000 today, whilst swift numbers have declined by about 40% in the same period. Swift numbers are relatively easy to monitor owing to their preference for nesting in buildings with high vertical walls. A 'hedgehog highway' in Kirtlington north of Oxford has gained national prominence (you may have seen it on the One Show), which basically involved drilling through interlinking garden walls and installing ramps in key houses in the village, making their nocturnal rambles easier – they can roam between 1.2 and 1.8km per night, depending on whether they are females or males - and thus keeping them away from roads and the high likelihood that they'll end up as roadkill.



Swifts, likewise, need a helping hand, and that comes in the form of swift boxes. As a group we now have one box, and we'll be investing in more. As a fan of products with the fewest number of air miles, I'm glad to report that there is a man who has made thousands of these in Cambridgeshire, and they work by being positioned on either east- or north-facing walls – so away from the heat of the sun, at the top of walls with at least a 4.5 metre drop and space for fledglings to regain height, so somewhere like a school wall - maybe the primary school in Burford? – would be ideal. If your house fits the bill, and you'd be interested in providing homes for swifts in two years' time, then do let us know. It takes them a while to reconnoitre new nesting sites, so they're not likely to nest next year, but 2026 would be a distinct possibility. Each box is 37cm by 22cm.

*Andy Hayter, [beagles.burford@gmail.com](mailto:beagles.burford@gmail.com)*

## WHAT'S ON AT FarmED - OCTOBER

FarmED is hosting a new series of literature events in October, including the official launch of a new book about Britain's favourite soap, The Archers. You can also spend an evening with popular television presenters Kate Humble and Tom Heap.

An Evening with Tom Heap, Thursday, 10 October 6.30-9pm  
Join broadcaster and author Tom Heap in conversation with FarmED founder Ian Wilkinson as they talk about Tom's new book *Land Smart: How to Give People and Nature the Space to Thrive*.

FarmED Literature Event: *Home Made* with Kate Humble, Friday, 18 October, 6.30-9pm

Join television presenter and writer Kate Humble to hear about her inspiring new book, *Home Made*, a celebration of everyone who makes and grows the food we eat. Your ticket also includes a copy of *Home Made*.

*The Archers Unseen* with Julie Beckett, Thursday, 24 October 6.30-9pm

Join us at FarmED for a drinks and nibbles to celebrate the official book launch of *The Archers Unseen*. Julie, the author, will be in conversation with editor of The Archers Jeremy Howe and Sybil Ruscoe, the farming and countryside advisor on the show.

You're also invite to join FarmED for two autumnal events:

- Harvest Festival, Sunday 6 October 10am - 4pm

Join us to celebrate the end of harvest with a fun-filled family day. The Harvest Festival will be filled with activities for all the family; farm walks, minibeast safaris, corn dolly making, bread making demonstrations and garden games - there's something for everyone!

- Apple Day, Tuesday 22 October 9:45am-2pm

Join us to press, explore and taste all of our unique heritage varieties of apples on this year's Apple Day.

*Fiona Mountain*

### Social Hub Too

FarmED has started a new venture, The Chatty Cafe Scheme, to enable people to meet others in a social environment. The Chatty Café Scheme is the UK's leading non-profit organisation tackling loneliness. This involves:

- Face to face meet ups where venues offer 'Chatter & Natter' tables, where customers can get together and chat. We have hundreds of venues around the UK, many Chatter & Natter tables are hosted by Chatty Table Volunteers.
- Online Chatty Cafe Sessions held every Tuesday from 10am to 12 midday. Anyone over 18 can join, simply to chat to others.

*Camilla Notman*

## FUN CONCERT IN TAYNTON CHURCH

Save The Date

Saturday 23 November at 6.30 pm

Performed by young musicians to raise money for Taynton Church Fabric Fund.

To be followed by Drinks & Canapés!

*Lucinda Negretti*

## OCC COUNCILLOR REPORT

### Winter Fuel Cuts

Over the past few weeks, I have received numerous emails/complaints from elderly residents in my division over the government's intention to reduce the Winter Fuel Allowance ("WFA") to only those pensioners who are on income/pension credit. The Winter fuel Allowance was originally introduced by Gordon Brown in 2009. WFA gives older people reassurance that they can afford to heat their homes in winter. Yet this reassurance has been taken away from 10m retirees by Rachel Reeves who will restrict the payment to a mere 1 million people who claim pension credit.

This announcement has led to a storm of protest as many pensioners, especially the over-80s, have either run out of savings, never had any, or don't have a private pension. The pensioners need to be supported, especially as January and February are the coldest months, and the £200 is mainly used to warm homes at this coldest time of year. There are fears that this could lead to many deaths. One in five winter deaths are due to cold homes and one in ten due to fuel poverty. Advice on keeping warm in winter can be found on the OCC website (look under social and adult care/adult social care services/services to help you stay living at home), from Better Housing Better Health (bbbh.org.uk), from Live Well Oxfordshire, from Age UK and other organisations.

### Council Commits TO £0.5M Spend On Developing Workplace Parking Tax

OCC Liberal Democrat cabinet member for infrastructure and development, Judy Roberts, agreed with officers' recommendations to approve £500,000 spending on technical aspects of development work around the planned workplace parking tax at her decisions meeting on 18 July. A team leader is being recruited on £50k pa. This is despite the fact that the proposal is hugely controversial and hasn't even been out for public consultation yet. Critics observe that it is clear that the proposal will go ahead, whatever the result of the consultation.

### OCC To Be A Council Of Sanctuary For Refugees And Asylum Seekers

OCC council leader Liberal Democrat Liz Leffman has written to the Home Secretary stating:  
*"Our ambition in Oxfordshire is to support a refugee and asylum system that ensures a warm welcome for all new arrivals and embraces and supports independent living for those staying in the county. Oxfordshire is enhanced by the contribution of a range of diverse communities living here and we are committed to playing our part in the overall national and international challenge. To that end, Oxfordshire County Council is currently working towards becoming a Council of Sanctuary."*

This follows full council in July when Liberal Democrat cabinet member for finance, Dan Levy, confirmed that the administration was looking at ways to provide free or subsidised bus travel to asylum seekers from its funds, if financial support from HM Treasury was not made available.

### Controversial Oxford Four-Sector Plan Postponed Again

The controversial plan to split Oxford into four sectors for traffic management purposes by using six 'traffic filters' has been postponed yet again. This is because Network Rail has postponed the replacement of Botley railway bridge and is unable to reopen Botley Road in October.

### Free Electric Blanket Tests



nick.fieldjohnson@oxfordshire.gov.uk and nfjuk3@gmail.com

\*\*\*\*\*

Residents are being encouraged to take up the offer of a free electric blanket check. Sessions will be held at locations across the county this autumn. Appointments can be booked by visiting <https://service.oxfordshire.gov.uk/blankettesting> or calling 01865 895999.

OCC Cllr Nicholas Field-Johnson, Burford and Carterton North

## WODC COUNCILLOR REPORT

I mentioned last month that the government is consulting on proposed amendments to the NPPF (National Planning Policy Framework) and new housing targets. By the time you read this, the consultation will have closed and we will have submitted our comments as a District.

This will include strong arguments for some of the key proposals around the new Standard Method for setting housing targets and the way it is applied. We will have answered their 106 questions, but we will also use the consultation as an opportunity to explain how changes to the policy could make it easier for the District to achieve its policy of setting net-zero standards for new housing construction and ensuring that the infrastructure is provided to make our housing developments more sustainable, rather than just imposing an increased load on our over-stretched surgeries, schools, roads and sewerage.

As you know, one of the key functions of the District is to collect our vast amount of domestic waste. Once it is collected from you, we use a specialist company to process the recycled material we all put in our blue bins. We are about to transfer this contract to a different company who will be able to increase the scope of our recycling to include "fly-away" plastics. We are delighted to be able to extend the range of what we can re-cycle and will publicise details of "what" and "how", in the next few weeks.

I am sure that many of you, like me, will have ventured up to the Farmer's Dog to see and experience Jeremy Clarkson's new venture. The opening seems to have gone smoothly and it certainly seems to be attracting and pleasing a lot of people. It gives every visitor a tempting view of the Cotswold landscape, and the works carried out by OCC on the



approaches to the site, plus the large temporary overflow car park, seem to have prevented any significant traffic impact. I would be interested to get any feedback on whether it has had any wider impact in the area, both in terms of benefits and problems.

Hugo Ashton  
 District Councillor for Burford, Fulbrook and Taynton  
[hugo.ashton@westoxon.gov.uk](mailto:hugo.ashton@westoxon.gov.uk)  
 or 0771 2490517

## BURFORD SINGERS



Church Green, Burford OX18 4RY

Burford Singers with  
 Lucy Cox: Soprano  
 Charlotte Sleet: Mezzo soprano  
 Cotswold Chamber Orchestra  
 Leader: Kate Bailey  
 Conductor: Will Dawes

Programme includes:  
 Vivaldi – Gloria  
 Albinoni – Adagio  
 Rutter - Magnificat

Tickets reserved at £29, £23, £17, unreserved £15, £12  
 Online booking from 20 October (Booking fee applies) at <https://www.burfordingers.org.uk/buy-tickets/>  
 Phone: 0333 6663366 (free of charge) Monday to Friday, 9.00 am to 7.00pm (not bank holidays). Booking in person (unreserved tickets only) from 20 October at The Madhatter Bookshop, 122, High Street, Burford OX18 4QJ. And on the door.

Details on our website <https://www.burfordingers.org.uk/events/>  
 Catherine Martin

\*\*\*\*\*



### Theft of Motor Vehicles

We are continuing to have instances of cars being stolen from just outside houses. This normally involves keyless cars and normally happens overnight, however in some cases this has happened in the middle of the day when no-one expects it.

There is an easy way to protect against this type of theft and it involves getting a storage pouch/box for your keys which blocks the signal being stolen. The thieves steal your keys signal from outside your house and then use the signal to steal your car. They will also de-activate any tracking signals from the vehicles as they are very organised and professionals who know what they are doing.

We are advising people to purchase an RFID key fob pouch or box as it is a simple thing that can stop the theft of your keyless car. Please note we have selected this device as it has lots of good information however we are not suggesting a particular type or brand.

Nick Morley

## COTSWOLD FESTIVAL OF MUSIC 2024

A weekend of music from an English Arcadia in the heart of the Cotswolds

The Devine Musick  
 Steven Devine, Music Director  
 Kate Semmens, Soprano  
 Rory Carver, Tenor

Accompanied by the Northleach Choir

Friday 1 November, doors open at 18:00

Concert starts at 18:30

Saturday 2 November, doors open at 13:30

Concert starts at 14:00

Northleach Church, Gloucestershire, GL54 3HZ

For more information on artists visit our website. Scan code for tickets.

[www.cotswoldfestivalofmusic.co.uk](http://www.cotswoldfestivalofmusic.co.uk)



## COTSWOLD HISTORY FESTIVAL

A brand new history festival is coming to Cirencester town this October half term.

26 October – 3 November

Join us for talks by some of the country's most respected speakers, writers and thinkers in beautiful historic venues around Cirencester. Headliners include:

Jonathan Dimpleby, Rev Richard Coles, Cat Jarman, Charles Spencer, Marc Morris, Natalie Haynes, Janina Ramirez, Ronald Hutton and Max Hastings.

We've teamed up with Corinium Museum, New Brewery Arts, The Barn Theatre, Octavia's, Waterstones, Cotswold Cookery School, the Cirencester Library and the National Trust to bring you a full programme of family activities and Halloween fun over October half term.

Programme and tickets on sale:  
[Cirencesterhistoryfestival.org](http://Cirencesterhistoryfestival.org)  
 in association with Gloucester History Festival



\*\*\*\*\*

## BURFORD CHRISTMAS MARKET – HOLD THE DATE

The date of the 2024 Burford Christmas Market has now been confirmed for 29 November in Burford Church. We will have lots more details in next month's Bridge but for now anyone wanting to book a stall should go to <https://burfordbenefice.churchsuite.com/events/kr6t757> or scan the following QR code:



Adrian Jackson - Operations Manager



### Company Secretary and Treasurer Vacancies

Following 10 years of service our company secretary has decided to step down, and we need a replacement to ensure we meet statutory regulations, hold regular meetings and to generally keep us on the right track. You will be working with the trustee/directors of The Burford Festival which is a charitable company.

The Festival treasurer, who is a member of the Festival Committee, is also resigning after seeing the committee through the past two Festivals. The treasurer has the responsibility of reporting to the trustees on budget and cash management, and liaising with the accountants.

These are great opportunities to be part of a small and dedicated team of volunteers and to contribute to the ongoing success of the biennial Burford Festival.

Although both roles carry responsibility, neither is very time consuming. If either is something which appeals to you, we would love to hear from you.

For more information, or to make your application, please write in the first instance to Dorrit Marshall at [trustees@burfordfestival.org](mailto:trustees@burfordfestival.org)

*Deborah Knight, Chairman of the Trustees of The Burford Festival*



### Oxfordshire FHS Family History Fair

Saturday 26th October 2024  
10am – 4pm  
Free entry, free parking

**Cherwell School (North),  
Marston Ferry Road, Oxford, OX2 7EE**

*Wheelchair and child friendly*  
Get help with your research – particularly in Oxfordshire but also in other counties and countries. A variety of subject experts will be present, browse and buy books, CDs, maps, postcards and materials from specialist companies.  
**Refreshments available (until 3:15 pm)**



Visitors have previously said:

"Great to chat with various stallholders. Love the range of stalls and products."

"Very helpful guides/society members"

"Excellent! Lots of help from lovely people"

For more information including advice on how to get to the fair visit: [www.ofhs.uk/fair2024](http://www.ofhs.uk/fair2024)

email: [fair@ofhs.uk](mailto:fair@ofhs.uk)  
Tel: OFHS Helpline: 01865 358151



Registered Charity Number 275891

### GUIDED WALKS WITH THE COTSWOLD VOLUNTARY WARDENS

Details of the walks available are described on the website (below). Please check walk details carefully on the website, including whether booking is necessary. Additional walks may be published on the website:

<https://www.cotswoldsaoib.org.uk/visiting-and-exploring/guided-walks/>

#### Batsford to Blockley & Moreton in Marsh – Tuesday 1 October – Moderate 3.5hr 7.5ml

A demanding walk from Batsford Arboretum to Blockley then a gradual descent to Moreton in Marsh and a leisurely stroll back to Batsford Arboretum.

Batsford Arboretum is a glorious place to visit, and lunch can be had after the walk in the grounds or in the café. Batsford Park belonged to the Mitford family and their colourful daughters – we'll enlighten you about the girls! Then on to Blockley where Father Brown is filmed, and the parish church of Saints Peter and Paul is renamed as St Mary's Roman Catholic church for the programme. We then walk on to Moreton in Marsh, home of the Fire Service College and the shortest motorway in the UK. Market day will be in full swing, and walkers can leave us there if they want, as it is very straightforward to return to Batsford Arboretum, or have a quick look round and complete the walk back to the start. Bring a drink/snack.

Start: 10.00am Batsford Arboretum, GL56 9AT. OS Map ref: SP 182 333 W3W: [shuttled.chitchat.chest](https://www.what3words.com/shuttled.chitchat.chest)

#### Arts and Crafts from Broadway to Saintbury – Thursday 10 October – Moderate 3.5hr 6ml

A walk from Broadway up the High Street focussing on the Arts and Crafts movement and continuing across fields to Saintbury. We will return to Broadway using the same route. There are gentle inclines and views from the North Cotswold escarpment.

This walk starts at Broadway War Memorial which itself has strong links to the Arts and Crafts movement. Proceeding up Broadway High Street we will point out several buildings with links to the Arts and Crafts movement, our royal family and the Americans who 'discovered' Broadway at the end of the 19th Century. Leaving Broadway we journey across the Farncombe Estate with its strong links to environmentalism to St Nicholas. This is a disused, although still consecrated, church in Saintbury. St Nicholas has several examples of Arts and Crafts works through their relationship with the Guild of Handicrafts and associated artists and designers which moved from London to Chipping Campden in 1902. The church also contains an unusual, for an English church, ancient fertility symbol and a rare Anglo-Saxon sundial. On returning to Broadway we will return to the War Memorial via Back Lane viewing several buildings with strong Arts and Crafts links. We will stop for 20-30 minutes at Saintbury for lunch and to allow time to explore the church. Please bring drinks/snacks and a packed lunch.

Start: 10.00am Broadway War Memorial WR12 7AA. Several public car parks (pay & display or RINGO). OS Map ref: SP 095 375. W3W: [podcast.gobbling.exit](https://www.what3words.com/podcast.gobbling.exit)

PLEASE use appropriate footwear as some walks may be steep and muddy in places. MODERATE - includes some hills and rough ground. STRENUOUS – may be rough underfoot and ascents and descents may be steep. We welcome guide and hearing dogs - sorry, others not allowed. Walks are free although we do invite donations to help fund our conservation and improvement work.

*Sheila Wasley*

### FRIENDS OF BURFORD LIBRARY

October is such a splendid month - nature provides a marvellous display of autumnal colour - and Burford Library hosts its famous, (or, as some people would describe it, infamous), Plonk and Pudding Party on the evening of Friday 25 October.

Make your way to the Baptist church on Witney Street to satiate your literary and gastronomic appetites. Tickets, at £12 each, can be obtained from the library or the Stone Gallery.

Last month we were happy to host a summer party for our volunteers in Jan and David Cohen's beautiful garden. On a glorious summer's evening conversation and Pimms flowed. The event also marked the tenth anniversary of the Friends of Burford Library as a charity. We wanted to thank our loyal and worthy band of volunteers, both new and long-standing, who so generously give of their time and energy. This ensures we can successfully keep the library open for the enjoyment of all.

The necessity to keep our libraries open was recently highlighted by the media, some of whom have been championing our cause. Public libraries now face the possibility of even greater cuts in their financing. Although we are obviously very grateful to our volunteers who keep the library functioning, we all have to be realistic that we would be hard-pressed to maintain current service and standards if funding was reduced. Your support and use of our library is even more important in these challenging times.

We look forward to seeing you at our home on the High Street.

*Maureen Percival*



Need help with your iPad or smartphone? Come to the library to celebrate **Get Online Week**. Burford library will be hosting a **Get Online** event on 15 October between 1.00 and 3.00pm. Contact the library for more information on 01993823377.

### Autumn Family Events



Crafternoon Sessions, every second Tuesday of the month from 3.15 to 4.15pm

Board games/Lego and Jigsaw Puzzles are also available for use in the library.

We provide a jigsaw puzzle swapping service, call in or ring 01993823377 for more details.



**The Friends of Burford Library**

Book your tickets early

## PLONK & PUDDING

Friday 25 October 7.45pm  
**The Baptist Church**  
(With kind permission of Gill Crippen)

**Our fiendish literary quiz,  
Bring & Buy Bookstall and more**

**Tickets £12.00**  
(include a glass of wine and as much pudding (savoury & sweet) as you can eat) from the Library or The Stone Gallery

### BURFORD LIBRARY NEW EVENTS

Knit and Natter – First Tuesday of every month. Come and natter if you can't knit! 2–3 p.m.

Book Group – Last Tuesday of every month – 2-3 p.m.

Coffee morning – every Friday 10.30-11.30. Play games/puzzles or just chat over a cuppa.

I.T Sessions - third Tuesday of the month. 1-3pm (half hour slots). Booking essential.

Reminiscence - every last Friday of the month 10.30-11.30 Led by David Cohen.

Scrabble Evenings – First Tuesday of the month 7-9 p.m. Refreshments provided.

All welcome – please register an interest with Carol-Amy at the library or phone 01993 823377

\*\*\*\*\*

### WINDRUSH RURAL CINEMA

Saturday 26 October

**Baltimore**

Windrush Village Hall - 7.30 pm - Tickets £5

Starring Lewis Brophy, Jack Meade, Imogen Poots, Tom Vaughan-Lawlor. Director: Joe Lawlor, Christine Molloy. Based on the infamous true story of a British aristocrat and debutante, Rose Dugdale, who was born into extreme wealth and privilege – a background she not only renounced but also weaponised when she became an active volunteer in the Irish republican movement in the 1970s.

*Dan Boyle*

## THE LOLLARDS IN BURFORD

Burford is famous for the Leveller mutiny of 1649 but none of those involved in that affair had local connections, whereas the Lollard heretics prosecuted in 1521 did. 'Lollard' is a derogatory term meaning 'mumbler', given to people prosecuted by the Church in the late Middle Ages. They were supposedly inspired by the theologian John Wycliffe (d. 1384), who was Master of Balliol College, Oxford. In his *Book of Martyrs*, published in 1563, John Foxe honoured several Lollards as martyrs for the 'true Religion' of the Protestantism of the 16th century; but the link between Lollardy and Protestantism is far from clear.

The Lollards were harshly treated. The prosecution in 1521 involved a group of 15 people in Burford. These included the leaders John Edmunds, a tailor, with his wife, John Harris and his wife (of Upton), Robert Burges and his wife, John Boyes and his brother (a monk of Burford), Edmund's daughter Agnes, Edward Red, (schoolmaster of Burford), John Through (of the Priory), Thomas Clemson, servant to the Prior, and Joan Taylor, servant to John Harris. In addition, one Hakker occasionally came from London, to read or sell books including 'a book speaking of the plagues of Pharaoh' and 'the book of the Exposition of the Apocalypse'. It is interesting that the Burford group included laymen and women, but also individuals attached to the Priory, which was an Augustinian hospital at the time.

Richard Gretton, author and compiler of *The Burford Records, A Study in Minor Town Government* (1920) thought that the accused had a motley collection of beliefs and could not really be classified as 'proto-Protestants'. He also thought that, even at the time, to prosecute them for heresy was 'a pursuit of trifles'. But the relevant authorities evidently thought that the Lollards represented a serious challenge to the Church. We should recall that even Henry VIII (r.1509-47) was awarded the title 'Defender of the Faith' because he was a fierce opponent of the Protestant Reformation, before he decided to divorce his wife in the late 1520s.

The Burford Lollards were branded on the cheek and ordered to fast, recant their errors, walk three times around the market cross, each with a faggot on their shoulders. On a certain Sunday they also had to carry the faggots and kneel with them at the High Altar in the parish church during High Mass. Finally, they were sentenced to perpetual imprisonment, either in a monastery or convent. From a modern, humanitarian, point of view, there is some consolation to be found in the fact that they were at least spared the torments of the stake; and that all the monasteries and convents in England were dissolved by 1540, so that any Lollard prisoners surviving at that time would then have been sent home.

*Stephen Cooper, Chairman, Burford & District Society*

## RISSINGTONS LOCAL HISTORY SOCIETY

Friday 18 October at 7.30pm: talk on "Preservation of the Peace – foundation and early years of Gloucester Constabulary" by Dr Tim Brain who was chief constable of Gloucestershire for nine years. A short AGM will be held prior to the talk.

**Venue: Village Hall, Upper Rissington GL54 2QW**

Visitors welcome - £3.50 to include refreshments

*For enquiries contact informationRLHS@gmail.com / Kate O'Brien 07815 606770.*

## WYCHWOOD PLAYERS



It's A Wonderful Life ... it was a wonderful film wasn't it? It's now a wonderful play, full of timeless crises, issues, conflicts and (eventual) happy endings that are just as relevant today in the UK as they were in 1940s America. Are they? Come and find out at the New Beaconsfield Hall, Shipton under Wychwood where the Wychwood Players will perform it from 28 to 30 November. To find out more and to book tickets please visit: [wychwoodplayers.com](http://wychwoodplayers.com)  
*Ralph Wears*

## BROADWELL PROUDLY PRESENTS



**"Tales of a Midwife". Guest Speaker : Dorothy Cook**

Some true, hilarious stories from Dorothy's working life as a midwife here and overseas. Dorothy will also discuss the more serious issue of female genital mutilation in Oman where she was seconded for a year.

Date : Friday 11 October 2024. Time : 7.00 pm – 8.30 pm

Venue : St Peter & St Paul's Church, Broadwell, Lechlade GL7 3QS

Tickets: £5.00 per person (under 16s free)

Payment: BACS : Broadwell Parish Vicar and Church Warden. Sort Code : 20-84-58. Account : 60205826

Reference : Midwife. Cash or card on the door

Refreshments will be available for a donation – cash or card

All profits, after costs, to go to Broadwell Church.

*Anne Taylor*



## Funding Request Invitation

On behalf of the Trustees of the Burford Festival, I want to thank our amazing and enthusiastic Festival Organising Committee for putting on an enjoyable and very successful Festival in June this year. The wide range of events was well attended, and this resulted in a surplus, which we look forward to donating to qualifying causes in Burford and the area covered by The Bridge magazine circulation. Our full objects can be found on our website [www.burfordfestival.org/about/](http://www.burfordfestival.org/about/)

In summary our objects are to –

- Advance the knowledge and understanding of the arts and local heritage, the promotion of the conservation, preservation and improvement of the local physical environment in Burford.
- The promotion of good citizenship and civic responsibility by supporting youth groups and youth centres, sporting events, educational activities and community entertainments in Burford and/or its surrounding districts.

If you have a project for which you need financial support and you are in the qualifying area, please apply to Dorrit Marshall [trustees@burfordfestival.org](mailto:trustees@burfordfestival.org) by 31 October 2024.

Applications should be on no more than one A4 page, giving the following information: –

- The name of the organisation applying and contact details
- A description of the support you wish to apply for, who it would benefit and how it meets the objects of the Burford Festival
- The amount of support applied for, and details of other support (organisations and amounts)

We look forward to hearing from you, so that the efforts of our hard-working committee and volunteers can directly benefit our community.



*Deborah Knight, Chairman of the Trustees of the Burford Festival*

 **DISCOVER FUNTASTIC**

**FRENCH!** 

Unlock the joy of learning French with fun classes for adults. If you're a beginner, the relaxed, engaging lessons will help you boost your confidence. Join group sessions or take one-to-one coaching. It's never too late to enjoy learning French - let's make it a funtastic journey!

Contact Lou now:

 [lou.funtasticfrench@gmail.com](mailto:lou.funtasticfrench@gmail.com)  07913 905484

 [\[www.funtasticfrench.co.uk\]](http://www.funtasticfrench.co.uk)

## BURFORD & KINGHAM ROTARY CLUB

At our meetings on Monday evenings at Burford Golf Club, we are regularly entertained by guest speakers and we have recently enjoyed a series of interesting and informative speakers. John Beresford gave us a detailed account of his father Jack's multiple Olympic rowing successes, including gold at the 1936 Olympics in Germany. Jack took up rowing to recover from his First World War battle wounds!

Peter Mountford MBE spoke about two charities which he co-founded. Heropreneurs, which mentors and supports ex-servicemen with their start-up businesses, and the Veteran's Foundation which supports individual veterans who find themselves in difficulty.

More recently we were entertained by stories about the Chipping Norton baseball bat and another recounting the Burford Mutiny.

At the FFF&B Ploughing Match and Show at the end of September, we volunteered to help with traffic management and the tractor-trailer rides. We have provided help at this event for several years – we highly recommend you consider going next year.

We have been lucky to have been allocated several slots at Chastleton House where we provide tea and cakes for the visitors to the house. This is a great opportunity for us to raise money for our charity account.

The Club has plans for lots of events over the next few months, including a Bridge Drive in November and a Murder Mystery in February. And, to highlight World Polio Day, watch out for us planting another 4,000 crocuses on the verges of Burford Hill on 28 October.

We welcome visitors to our meetings and, of course, we are keen to increase our membership. If you are considering joining Rotary, but aren't sure, why not consider being a "friend of Rotary"? You can volunteer with us without being a member. Please visit our website: [www.burfordkinghamrotary.club](http://www.burfordkinghamrotary.club)

*Stuart Jackson*

\*\*\*\*\*

## COTSWOLD PATISSERIE PICKS UP NATIONAL AWARD

Burford's Hugo Lovage has been awarded the Prestige Award for 2023 and 2024 for Patisserie of the Year. The special multi-award was handed to them at a glittering bash held in Bristol. They were also given an Award of Excellence.

Hugo Lovage is run by Michelin trained pastry chef Cindy Kosmala who has worked with renowned chefs such as Philip Howard, Gordon Ramsay, Matt Abe and Clare Smyth, and worked at Soho House, Chez Bruce and Restaurant Gordon Ramsay.

Hugo Lovage specialises in handcrafted patisserie and desserts. The patisserie's decadent range attracts locals and visitors all year round. Alongside taking away macarons, eclairs, bavaois, cheesecakes and a breadth of other sweet treats, visitors can dine in for a sumptuous afternoon tea.

The judges were particularly impressed by Cindy's extensive range of handmade desserts, which are also sought-after by businesses in the region. As a high-end patisserie, its indulgent creations attract wholesale demand from cafés, hotels, and other businesses, showcasing the quality of her range which includes gluten free, vegan, and dairy-free varieties too.

Hugo Lovage can be found at 54 High Street, Burford, OX18 4QF. Hugo Lovage Patisserie is open 9-5pm every day.



“October, baptise me with leaves! Swaddle me in corduroy and nurse me with split pea soup. October, tuck tiny candy bars in my pockets and carve my smile into a thousand pumpkins. O autumn! O teakettle! O grace!” - Rainbow Rowell

A humungous THANK YOU to those of you who supported Burford Literary Festival. Without our audience there can be no performance.

If you were unable to join us for our annual celebration of all things literary, we have more to celebrate this month.

**10 October 3.30pm**

We are thrilled to announce that author Louise Wannier is joining us all the way from the USA to talk about her stunning book *Tree Spirits*. Experience the joy of imagination with this interactive picture book for your children and grandchildren. *Tree Spirits* is for 3-8 year olds and inspires creativity and imagination in children. It helps them to see and visualise our world in non-obvious ways and introduces them early to an understanding of their own inner spirit and feelings: key skills for early childhood development and crucial for lifelong success.

**16 October 6.30pm**

Felix Francis – talking horse-racing, writing and his new book *No Reserve*. Horse-racing is the second biggest spectator sport in the UK after football and Felix Francis knows his audience better than most. The son of the legendary author and racer Dick Francis, Felix co-wrote thrillers with his father in his latter years and continued to publish them under his own name after Dick’s death in 2010, selling nearly a million copies as a solo writer to date. *No Reserve* is a blistering new high-stakes thriller set in the glamorous but cutthroat world of British racehorse sales. We are delighted to welcome Felix to Burford to talk about horse-racing, his life and *No Reserve*.

Tickets are £5 and on sale now at [www.madhatterbookshop.co.uk](http://www.madhatterbookshop.co.uk) or at the Madhatter Bookshop. Each £5 ticket is redeemable against a copy of *No Reserve* which Felix will sign at the event.

**26 October 6.30pm**

The Book Bar is back and this time it Enlightened! Join us for wine and comedy newcomer, Paul Miller.

We are thrilled to be hosting Paul Miller, all the way from Fulbrook, as he takes you on a comic journey into the world of self-improvement, yoga, meditation, consciousness-raising, gong baths and (well, other stuff like that) - you get the gist of it! Join us for some wine (part of the ticket price) for 30 minutes followed by Paul - all done by 7.30pm. Where else can you get enlightened in an hour?

More information about our events and all the wonderful books we would love to recommend to you can be found at [www.madhatterbookshop.co.uk](http://www.madhatterbookshop.co.uk) or do pop in and chat all things bookish.

*Kim Harvey*

COPYRIGHT © 2024 Copyright in all articles in this magazine is reserved by the respective authors of those articles as identified. Requests for permission to copy or reproduce articles should be submitted in writing to The Bridge c/o Burford Post Office 29 Lower High Street Burford OX18 4RN or by email to [editor@thebridgeburford.co.uk](mailto:editor@thebridgeburford.co.uk)

**ALICE’S BOOK GROUP**

*100 Poems on the Underground*

From the shivery first “Up in the Morning Early” by Robbie Burns to the final serene blessing “Sometime” by Sheenagh Pugh, *100 Poems on the Underground* is treasure lode to be mined at leisure. The editors Gerard Benson, Judith Chernaik and Cicely Herbert decided the Tube traveller needed more stimulation than graffiti, and were the driving force which saw, in 1986, the first poems posted on the underground.

Alice’s Book Group was set the nearly impossible task of choosing just two favourite poems; this resulted in many of us, reared on poetry with a rhyme and rhythm, learning to appreciate and enjoy as poetry what seemed merely beautiful prose. Several familiar titles, however, stood the test of time. Wordsworth’s “Composed on Westminster Bridge” was a popular choice, Siegfried Sassoon uplifted with “Everyone Sang,” whilst the lovely “Sonnet from the Portuguese No. 43” by Elizabeth Barrett Browning is perennially moving as is the, lesser-known, “Sonnet” by Edna St Vincent Millay, so full of yearning.

With a different emotional kick are two cries against authoritarianism: “And Yet the Books” by Czeslaw Milosz, a poignant essay on the enduring strength of books, which recalls the barbaric public book burnings; “You took away all the Oceans and all the room” by Osip Mandelstam is a four - line riposte to Stalin who had Mandelstam imprisoned, the eventual cause of his death.

On a lighter note, there is the gentle and atmospheric. Ted Hughes evokes a peaceful rural evening in “Full Moon and Little Frieda,” obviously taken from life and filled with affection.

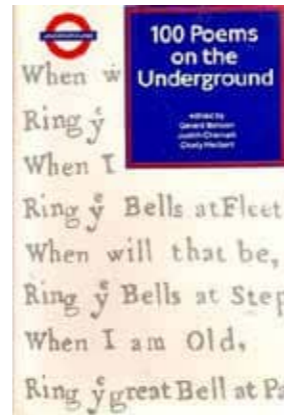
We were delighted to learn the nursery rhyme “Oranges and Lemons” had many more couplets, though I doubt they will remain in our memories like the those from our early parties. And cheering was “Sergeant Brown’s Parrot” by Kit Wright. Other police officers have radios and torches on their shoulder, Brown has a parrot. “The Loch Ness Monster’s Song” by Edwin Morgan is gobbledegook, but read aloud one hears the monster’s lament when he surfaces to find he is the last of the dinosaurs.

Ruefully we appreciated Rudyard Kipling’s “The Dead Statesman,” but Roger McGough hit the spot: “The Leader”

I wanna be the leader  
I wanna be the leader  
Can I be the leader?  
Can I? I can?  
Promise? Promise?  
Yippee, I’m the leader  
I’m the leader.

**OK, What shall we do?**

Try some of these yourself. Our next book continues the poetic theme: Andrew Motion’s memoir *In the Blood*.  
*Veral Marshall*



**LETTERS TO THE EDITORS**

**A Happy Return**

My wife and I recently spent a day in Burford and one of the friends we visited gave us a copy of *The Bridge*.

I write to congratulate you on the quality of the publication and to say how impressed we were with the quality of life that Burford residents enjoy. The range of cultural, artistic and social activities is excellent and provides a stimulating environment.

We used to live in Stile Close at the top of the Hill. Our sons, Michael and Chris, went to the local primary school and we attended the parish church where we sang in the choir alongside Cedric Reavley among others. I had a teaching post in Witney.

A special memory is of a visit to Burford in 1978 of Jo Grimond, leader of what was then the Liberal party. His inspiring vision converted me and, many years later, I was a Lib Dem county councillor in Cambridgeshire for 20 years.

My wife Pamela helped Miriam Picken at the Friday Club held in the Methodist Church which was a much-needed youth club.

Coming back to Burford brought back many happy memories and we were delighted to see how the town is prospering. Keep up the good work!

*Peter Downes (former Head of the Henry Box School)*

\*\*\*\*\*

**Cheers!**

During the course of my research into the licensees of the inns, taverns and beerhouses of Burford I have come across two that were not actually in the township of Burford and I am trying to locate them and find what became of them.

The first is the Rose & Crown in Upton. This was in existence in the 19th century with Thomas Radburn as the licensee from 1818 to 1866 followed by his son Philip Radburn from 1866 to 1884. The last mention of the pub was in 1891 when Edwin Pratley was the licensee. No mention of the pub after that date. But where was it in Upton and what became of it?

The second is the Lamb & Flag, described as being in the Horse Fair, in the hamlet of Signet in 1804, when it was for sale. Charles Maisey was the licensee 1774 to 1803. The last mention I have found was when it was to let in 1823. It is possible that this pub was in Signet Farmhouse, as I have spoken at length with Clendon Daukes who lives there. He showed me some old copper vessels in an outhouse that may quite possibly have been used for brewing.

If any of your readers has any information regarding these two pubs I would love to hear from them. But as a researcher I would prefer a source of information rather than just hearsay.

I can be reached at [drudlin42@gmail.com](mailto:drudlin42@gmail.com)

*Douglas Rudlin, Stonesfield*

*Another business opportunity for Jeremy Clarkson? - Ed*

**HIDDEN LANDSCAPES: ASTHALL AND THE WINDRUSH**

In September’s edition of *The Bridge* our mayor wondered what impact Jeremy Clarkson’s new venture, *The Farmer’s Dog*, might have on Burford. Whilst there may be some inconvenience to the residents of Burford and Asthall, visitors to the site might find compensation in the terrific view of the Windrush Valley to the north. The view on its own is worth the visit; but it is even more rewarding if you know how that landscape came into being.

When you next visit, take an OS map with you, spread it out on your table and have a look at the odd arrangement of contours just west of Asthall. You will notice that they form an almost circular pattern with the high-point in the middle of the tree-covered ridge that is clearly visible from the pub. A crescent-shaped depression separates this conical high from the main slope that rises up to the A40. If you then look at the values of the contours marking the depression, you will see that they are about the same as those in the Windrush flood plain immediately north and east of Asthall.


If you venture into the fields in the lowest part of the crescent with a spade and start digging (I don’t recommend it without asking the farmer) you will find not the hard Jurassic limestone rocks that make up the rest of the hillside but soft river deposits similar to those along the Windrush valley. How did they get there?

The answer, of course, is that this crescentic depression marks the former course of the Windrush. At some point in the recent past (recent in geological terms), probably at about the end of the last ice age, the river eroded its way through the ridge, which was deflecting its path to the south, to create a shortcut north of Asthall. The abandoned loop, or meander, was probably occupied by a lake for long afterwards. On very wet days the road immediately west of Asthall still floods at the point where the river formerly swept southwards. Stand at the top of the steep hill next to Asthall Manor looking west and you can almost imagine the river resuming its old course.

Once the river had done its erosive work, the landscape around Asthall was permanently changed; what was once a promontory of the northern flank of the Windrush became the isolated conical hill we now see on its south side.

If you doubt that this reworking of the landscape could have been accomplished by the peaceful little stream that is today’s River Windrush you might have a point. But the Windrush was not always such an unassuming water course; we will discuss that next time.

*Joe Brannan*



**BURFORD and DISTRICT SOCIETY**

**NEW TO BURFORD & AREA?**

Welcome. The Burford & District Society will be happy to deliver your free copy of the ‘Living in Burford & District’ Pack with details of many of the local facilities, clubs and societies. Simply email your name and address to [lizannjack@gmail.com](mailto:lizannjack@gmail.com)

## ALLAN TUCKWELL

As many readers will know, Allan died in August. At the request of his family, we are reprinting our interview with him as a tribute to him. Allan's daughter Jo Rushton writes:

"It will be two years exactly since it was published and dad was so pleased with it. He was, quite typically, amazed that anyone would be interested in reading about his life. He had so many lovely comments from local people after it was published, and it gave him a much needed boost as the effects of the cancer were already affecting his confidence."

## THE BRIDGE INTERVIEW WITH ALLAN TUCKWELL

Allan Tuckwell is practically a Burford institution. He has lived in the town for over 50 years, spending many of them patrolling the mean streets as a police officer and doing much for the community both before and after retirement.

He was born in 1940 at Stadhampton, just west of Oxford, to William and Margaret Tuckwell. William served in the RAF during the Second World War and was away from 1941 to 1946 so Allan only got to know him after that. He had twin younger brothers, Pat and Martyn. Martyn was in the Royal Navy and served in the Falklands conflict. He died a few years ago. Pat still lives in the family home at Stadhampton.

After a typical country childhood spent playing football, swimming in the river and scrumping apples, Allan became an apprentice cabinet maker (he still has his tools and a workbench in the garage) after which he worked in the Morris Motors factory at Oxford where his father also worked. Childhood holidays were often spent with an uncle and aunt near Bath. One of his cousins was friendly with a girl from the local village who had twin younger sisters. Allan became friendly with one of these, Josie; very friendly, it turned out. The two cousins married the two sisters, Allan and Josie's wedding being in 1963. They had two daughters. Elizabeth, lives in Plymouth. The other is Jo Rushton, now a Burford town councillor, who has two children.

Sadly Allan's mother Margaret died suddenly in 1962 and shortly after the wedding William had a serious accident when he was knocked off his bike on the way to work. Allan and Josie looked after the home and his two brothers while William recovered. However there were limited prospects at Morris and they wanted a home of their own so in 1965 Allan joined the Oxfordshire Constabulary (merged into Thames Valley Police, or TVP, in 1968). After training he was posted to Witney and he and Josie moved to a police home in the town. He was equipped with a truncheon (he never used it in anger) and a whistle. There were, of course, no radios. At night officers were told to stand every hour for 15 minutes by a specified telephone kiosk so that the station could call them if needed.

In 1969 he was transferred to Burford police station which was on the Hill and he and Josie moved into a police house in Frethern Close. There were four constables and a sergeant at the station. Burford was patrolled on foot and Fulbrook, Taynton and Westwell by bicycle. There was a Morris Minor patrol car for the wider area. There was little crime, mostly things like newspaper and milk money being taken from doorsteps and minor motoring offences. Most of the former were dealt with by giving the miscreant a good ticking off and

telling them not to do it again rather than inflicting a criminal record. One person on the receiving end of this mended his ways to the extent that he later spent 30 years in the police himself, later thanking Allan for the way he was treated. On the other hand the police handled a lot of routine administration such as renewing shotgun licences and passports.

Not long after Allan moved here, Burford police station was closed and he and his fellow officers were henceforth based at the new station in Carterton. However he continued to patrol around Burford and continued to live in the town. The police decided that the police house was surplus to requirements and could be sold. Alan took out a mortgage and bought it. He remains there to this day.



What was the most traumatic incident he dealt with? Unhesitatingly he says that it was dealing with the cot death of a baby a few weeks old early in his career. "I was the first person on the scene, before the doctor". The mother was, of course, traumatised by the event and it had a big impact on him. Later he came inured to death as an inevitable part of police work: suicides, sudden deaths (sometimes two per week) and traffic accidents.

A happier memory was of nearly having to deliver a baby when the mother went into labour on a Sunday and her mother-in-law summoned Allan. He arrived in his wellington boots as he had been digging the garden. He entered the house to find the expectant mum on the sofa. He remembers feeling utter panic, and the only things he could recollect from his training were, 'Hot water and clean towels'. He reassured the

mother-to-be that he had watched the film on childbirth during his training. Luckily for Allan, he knew of a retired doctor who lived close by and went to find him. A healthy baby girl was born not long after.

He also had to sort out a number of domestic incidents. One warring couple found themselves in the Tuckwell home on two consecutive Christmas mornings, in different rooms while the Christmas meal was being cooked in the kitchen and Allan tried to mediate between them. Christmas dinner was served somewhat late.

Allan worked closely with another officer, Alan Goodman, and together they became something of local celebrities (see photo - Allan on the left). One task the two Al(l)ans took on was helping United States Air Force personnel and their families living in the area. Although they were based at Fairford, outside the Thames Family jurisdiction, many of them were quartered at Carterton. The two officers provided a sort of social service, putting on talks in schools, helping them to adjust to life in Britain and generally making them feel welcome. Allan became such good friends with them that some kept in touch with them after they left. He was presented with a commemorative plate and the USAF's commanding officer sent a letter commending both officers for their service.

There was a great deal of political unrest during the earlier part of Allan's career and initially the police were not trained or equipped to deal with it. When Enoch Powell spoke at Oxford town hall there was a huge demonstration. All the police could do to control it was to form a wall. "You just had to link arms and stay strong." He also had to police the Greenham Common peace camp and demonstrations which followed the closure of the Corby steelworks. This led to

proper riot training. Officers were given six foot high transparent plastic shields which they could hold in front of them and they practised moving forward in a row. Trainers then threw live petrol bombs at their feet. Allan found this alarming at first but became adept at putting the fires out by stamping on them. They were also given training in unarmed combat in fighting which was so fierce that occasionally officers were injured. Fortunately he never had to put any of this training into practice.

Police officers from all over the country were drafted in at the time of the miners' strike of 1984/85. Those called in were generally men without children who could stay away from home more readily so Allan was not directly involved. However the remaining officers had to work seven days per week in 12 hour shifts to cover for their missing colleagues.

More pleasant memories include attending the Remembrance Day ceremony at the Cenotaph representing TVP in 1976, standing right opposite the Queen, and policing concerts for Barry Manilow and David Bowie at Blenheim Palace and Milton Keynes respectively. In 1987 he was awarded the Police Long Service and Good Conduct Medal (see front cover). He also took part in the celebrations of the centenary of Burford Primary School.

With their two children at the primary school, Allan and Josie became actively involved in school life. Allan regularly helped with swimming lessons, taking the children to lessons at Witney pool. Josie also helped at the school, teaching groups of children knitting, sewing and embroidery, and then worked as a playground supervisor for several years. Housing conditions for many families were inadequate and one of Josie's tasks was to take children to the cottage hospital to be washed. Even the police themselves struggled financially in the 1970s which, as we have recently been reminded, was a time of high inflation. Morale was low, some demanded the right to strike, many officers left and Allan himself applied for other jobs. Police stations had collecting boxes on the front counter for the Police Benevolent Fund and such was public support that many donations were made. The children were eligible for free school meals at the primary school. In 1975 Allan was elected to represent his colleagues on the Police Federation. He was present at a conference addressed by Merlyn Rees, home secretary from 1976 to 1979. His speech was met with stony silence in the entire hall. "The atmosphere was electric." Relief came when a commission of inquiry into police pay was set up, chaired by Lord Edmund-Davies, a senior judge. This recommended substantial increases in pay, including a rise of 45.5% for constables with 15 years of service. Rees agreed to implement these recommendations phased in over two years, but following the 1979 election Margaret Thatcher decreed that they should be introduced immediately. Free school dinners stopped.

Allan's duties with the Police Federation gradually extended to include being secretary of the constables' branch board for TVP and area representative for the Police Benevolent Fund. His duties included taking part in the annual conference of the Police Federation and he attended the Garda conference in Ireland. This work eventually became a full time job but he did don his uniform every year for the Remembrance Service at the Burford war memorial.

In 1995 Allan retired, with 30 years service completed and the mortgage paid off. For a time he continued to work for the Police Federation as a civilian, for the golf club and for Castle's the Butchers doing deliveries. Sadly Josie was diagnosed with Alzheimers in 2015 and died in 2018.

Allan is an avid gardener and his house has a usefully large garden. When police pay was low he had two allotments as well as the garden, this being the only way to guarantee his

ability to put food on the table for his family. He reels off a long list of vegetables he grows, while apples are provided by his James Grieve tree. His pride and joy is a magnificent Pyracantha which grows along the front of his house and was covered with orange berries at the time of our visit.

His other passion is bowls and he is positively evangelical in seeking converts to the game. He joined Burford Bowls Club in the 1980s and was president for around 14 years. He plays every week and until Covid he had organised the annual Bowls Club tour 14 times. He even ran it from his hospital bed in 2016. Last year he was pleased to let someone else organise it, but he was there and enjoyed a rare winning tour. The day before he talked to us he had taken part in a match at Headington, one of the best teams in the county, which Burford won. He is still the vice president of the club, and he represents it on the Recreation Ground Committee.

A tall and authoritative figure, he can be seen striding, if not exactly patrolling, around the town, a model of service to our community.

\*\*\*\*\*

## MARGARET DEWEY



Margaret and Nicholas Dewey have lived in Burford for 22 years, spending half the year in Santa Barbara, California during their retirement. Margaret passed away at the age of 99 in the Cotswold Care Home on 13 July. A very well-attended service of thanksgiving was held on 23 July in the Burford Quaker Meeting House, which she and Nicholas had regularly attended. She leaves behind six children, ten grandchildren and six great grandchildren. Friends and family spoke movingly about her adventurous life and many accomplishments, and about the deep affection she inspired in her family and friends. She had grown up in New York where her mother was a singer who had sung at numerous churches and synagogues, so leading her to be a person of faith, which became her refuge and rock. She was steadfast, generous and warm-hearted, but with a playful and mischievous side too. She continued to take great pleasure in the company of friends almost to the end.

Margaret and Nicholas were active members of the Burford community, attending town events such as concerts and BDS visits and talks. Nicholas asked that this notice should be published in October, when Margaret would have marked her 100<sup>th</sup> birthday. She will be very much missed by all her friends, from Burford and further afield.

*Graham Hadley and Margaret's family*

## RETURNING WITH STYLE



Richard, Fynn and Tealent

On the face of it Burford and Detroit might seem to have little in common but both have figured in the working life of Richard Horne, a man with an extraordinary creative ability in an unusual field - designing and installing custom-made tiles and stonework.

His story begins in the heart of this area. He was born at Clanfield and attended Burford School until the age of 15 when he and his family emigrated to the USA. He completed his education at a high school in America after which he began work installing tiles in kitchens and bathrooms. After seven years he set up his own business, RJH Tile and Stone, with a team who all came from the UK and including a cousin. This led to co-operation with tile artist David Ellison, and their work together has led to awards for superior installation of tiles and stone, overall aesthetics and the interpretation of a distinctive design vision. Richard hand draws his designs and passes these to Ellison, who manufactures the tiles which Richard and his team install. His work is often based on historical architecture. His interest runs from the 12th Century onward. "The great cathedrals — anything to do with stone," he said. "The older I get, that is really what I enjoy looking at it. I like to take it back as far as we can." Trips back to this country helped to inspire him. "I look at different structures, different cathedrals, and old houses," he said. "You look at details of how stonemasons used to be putting things together. It's more or less a lost art form as time goes on."

He has some amazing photographs of projects he has worked on. Although much of the work comprises places where tiles are often used such as kitchens, bathrooms and fireplaces, there are some surprises. These include a dog shower (next page), a bowling alley (in a private home), a stone bed (we'd all like to have one of those) and a wine store room which would not look out of place in one of the Byzantine churches in Ravenna. Even the bathrooms can contain surprises, such as a stone stool covering a drain outlet so that you can sit on it while showering. All contain remarkable detail which demonstrates the care which has gone into the design.

Throughout his 30-year sojourn in America Richard always intended to return to this country and a six week trip home settled his resolve. In 2022 Richard, his wife Tealent and son Fynn left America, leaving the US end of the business in the hands of his cousin. They arrived Burford and moved into a cottage in the town. Fynn now attends Burford Primary School. Richard has already received commissions for work here. Readers may have spotted two of his distinctive plaques in Priory Lane and a third is planned for the Cotswold Arms. He has built a barbecue for a house on The Hill. He has established links with local sculptor and stone mason Piotr Gargas who makes architectural pieces for him. In addition Richard and his business partner Robert Taylor are undertaking the refurbishment of a Grade 2 listed house, also in Priory Lane. Richard gets most of his work by word of mouth and this is already happening, but we are sure that architectural and interior design magazines will soon be on his trail. He is already leaving his mark on our area - literally.

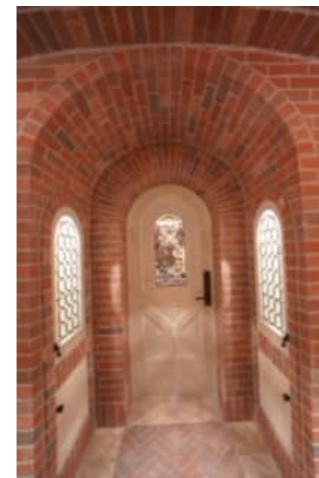
More of Richard's work can be seen here as well as his website, [rjhstoneandtile.com](http://rjhstoneandtile.com) *Editors*



Stone Bed



Wine Store



Have your say on women's health services in Oxfordshire! Healthwatch Oxfordshire would like to hear about your experiences of getting help for women's health issues, such as perimenopause, periods or cervical screening, as well as your experiences of health services more generally.

- What works well and what could be better?
- Is there anything that makes it difficult to get the help you need?
- What ideas do you have for how women's health services could be better?

Please share your experiences and views by completing an anonymous online survey at [www.smartsurvey.co.uk/s/womenshealthservices/](http://www.smartsurvey.co.uk/s/womenshealthservices/)

The survey will be open until 31 October.

Healthwatch Oxfordshire is an independent charity for people who use health and social care services. It finds out what matters to local people and makes sure their views are heard by the people who make decisions about those services. It will use your feedback about women's health services to help shape support and improve services. If you would rather talk to someone about your experience, or would like a paper copy or translated survey, please contact Healthwatch Oxfordshire on 01865 520520 or at [hello@healthwatchoxfordshire.co.uk](mailto:hello@healthwatchoxfordshire.co.uk)

To find out more about the work of Healthwatch Oxfordshire see [www.healthwatchoxfordshire.co.uk](http://www.healthwatchoxfordshire.co.uk)

*Vicky Tilley - Communications*

\*\*\*\*\*

## NEW LIFE COACHING WORKSHOPS

**This October sees a brand-new life coaching workshop come to Burford for the first time by personal growth Coach, Sharday Awori**

Sunday 6 October 2024 sees the first Life Coaching residency launch at Warwick Hall in Burford. Aimed at making life coaching accessible to all, the introductory sessions will help individuals prioritise their personal growth and mind health by learning proven techniques to empower self-belief and help unlock their full potential.

The first in the series of the two-hour coaching workshops take place on the first Sunday of the month starting on 6 October 2024, followed by Sunday 3 November and Sunday 1 December between 2pm – 4pm. These sessions will be themed around a 'life MOT' – using fun and relaxed coaching exercises to open the mind and end with a guided meditation to open the heart and relax the body. Each participant will also receive a free journal.

The workshops will be held in small groups to ensure quality and are priced at just £38 per person as an introductory offer to celebrate the launch. Further workshops are planned in the new year focussing on guiding career development.

For further information or to book your place, please email [sharday@aworicomms.co.uk](mailto:sharday@aworicomms.co.uk) or message on Instagram @awori\_comms. Booking early is advisable to ensure a place. Further information on Sharday Awori Coaching can be found at [www.aworicomms.co.uk](http://www.aworicomms.co.uk).

*Sharday Awori*

## DRINKING MORE BUT ENJOYING IT LESS?

There is a solution. Weekly Alcoholics Anonymous meetings are available in our area. AA members aim to stay sober and help others who turn to us to get sober too. All are welcome and it's free to attend AA. For more information ring 01452 418 515 or visit <https://www.alcoholics-anonymous.org.uk>.

There are meetings in Bradwell Village Hall on Wednesdays 7.30-9.00pm and Fridays 1.00-2.00pm

Besides the two meetings in Bradwell Village, there are also weekly meetings in Stow on the Wold, Lechlade, Witney, Carterton, Chipping Norton and Cirencester.

*Patrick Heininger 0786 796 0716*

## BURFORD PRESCHOOL

We have welcomed our new children and their parents to our preschool along with all our existing children this September. We are learning all about ourselves and the season of autumn.

During the summer we had a truly productive time under the Tolley in Burford raising £504.00 with a tombola, book, plant and cake sale, with many thanks to all those who donated. A special thanks to Amy and Graham Dadge, Jane Westmacott and Michael Tobenheim for organising the event. We very much appreciate their help.

Whilst we are thanking people we would like to thank Burford foundation trust for their continued financial support of our preschool, without which we would struggle financially.

If you would like a space for your child please do get in touch at [burfordpreschool@outlook.com](mailto:burfordpreschool@outlook.com) or phone us on 01993 824031.

*Dale Peedell Vice-chairman*

\*\*\*\*\*

## BURFORD OIL SYNDICATE



(Covering Burford, Fulbrook, Taynton and Bradwell Village only)

Our next order will be on Thursday 24 October closing at 5.00pm. Delivery is expected to be from 28 October to 9 November.

The following order will be on Thursday 5 December closing at 5.00pm.

For existing members, you do NOT need to renew your membership for this year. For new members forms are available on the website or at Reavleys and membership payment can be made direct to our bank.

To join the syndicate and order online at [www.burfordoil.co.uk](http://www.burfordoil.co.uk), or membership application forms, and order forms are available from Reavleys.

*Peter Higgs*

## EDITORIAL POLICY

As is customary with publications, the decision of the editors on what can and cannot be published is final. In particular, they will edit or decline to publish anything which in their opinion includes personal attacks on any individual, is expressed in unduly partisan language or is offensive, in bad taste or potentially defamatory. Opinions expressed by contributors are entirely their own and the appearance of any letters or articles in *The Bridge* does not indicate that the editors agree with them. Items may also be edited and may be rejected. Where items or services are offered for sale, or advertised, the provider is responsible for ensuring that the goods or services are safe and of good quality. The editors may refuse to publish advertisements or other statements about unsuitable items or services. *The Bridge* does not accept responsibility for the accuracy of advertisements and does not endorse any goods or services which are advertised. All items submitted for inclusion must give the name and address of the writer and an email address or telephone number. By submitting any article, announcement, letter or advertisement to *The Bridge* you are deemed to have agreed to the above.

All advertisements in *The Bridge* are accepted subject to *The Bridge Terms and Conditions of Advertising 2021* which can be viewed on our website [www.thebridgeburford.co.uk](http://www.thebridgeburford.co.uk).

## ARE THESE YOURS?



If so please contact me as they were left behind from the Festival Open Gardens Teas. The container has a sticker in saying 'lemon drizzle KK'.

*Carolyn Walton*

**CHARITY SALE**  
Saturday 2nd November  
10am - 3pm  
The Tolley, Burford  
Christmas items, good quality clothes, Bric-a-Brac etc. In aid of: Shilton Old School Village Hall (Cash preferred) reg.charity 272023

Don't forget to look at our website [www.thebridgeburford.co.uk](http://www.thebridgeburford.co.uk) too for updates on local news, previous features and topical photographs  
And for more photos about Burford events do look at Burford Life on Facebook.

Also we are on x/ Twitter for news updates  
**@BridgeBurford**

## SIGN OF THE TIMES



The finger posts in Burford have been refurbished by decorators from local firm The Finishing Touch. As well as being repainted they have been re-aligned where necessary and the ones pointing to the former visitor information centre have been removed.

*Editors*

## THE BRIDGE TEAM

As well as a large number of valuable, helpful distributors, the Bridge team consists of:

Advertising Manager	Karl & Ann Morris
Commercial Artist	David Mostyn
Editors	Gordon & Elaine Elliot
Founder/Chief Distributor	Clendon Daukes
Proof Reader	Judy Cumming
Roving Reporter	Ruth Reavley
IT Adviser	Pete Freeman

## THE BRIDGE TIMETABLE

The closing date for entries to the editorial sections of the magazine is 10th of the month preceding publication. Please send articles and information to:

[editor@thebridgeburford.co.uk](mailto:editor@thebridgeburford.co.uk)

Alternatively, you can leave letters and articles at the Burford Post Office for us to collect.

Advertisements need to be booked before the 10th of the month preceding publication. Please contact:

[advertise@thebridgeburford.co.uk](mailto:advertise@thebridgeburford.co.uk)

## PICTURE COMPETITION

Questions: In which village is this bridge? And what is the name of the stream flowing underneath it?  
Tom Barry



A Muntjac deer in a field between Burford and Taynton photographed by Mike Russell

## DIARY OF SPECIAL EVENTS

27-29 Sept	Burford Literary Festival	Various	Various
Sat 5 Oct	Charity Fashion Show	Warwick Hall	7pm
Tue 8 Oct	FABWI Harvest Festival	Baptist Church	7.30pm
Wed 9 Oct	TASC - Talk on Whistler	Warwick Hall	10.50am
Thu 10 Oct	Meet Louise Wannier	Madhatter Bookshop	3.30pm
Fri 11 Oct	Broadwell Talk - Tale of a Midwife	Broadwell Church Lechlade	7pm
Sat 12 Oct	Survival Ecology - see article	Asthall Manor	
Wed 16 Oct	Lenthall Concert - Brahms and Beethoven	Burford School	7.00pm
Wed 16 Oct	Meet Felix Francis	Madhatter Bookshop	6.30pm
Thu 17 Oct	BDHS - Plants for Awkward Corners	Bowls Club, Burford	2.15pm
Fri 18 Oct	Rissingtons Local History Society Talk - Gloucester Constabulary	Upper Rissington Village Hall	7.30pm
Sat 19 Oct	Windrush Christmas Fair	Windrush Village Hall OX18 4TT	11-3
Sat 19 Oct	Nature Rights event - see article	Asthall Manor	
Wed 23 Oct	TASC Special Interest Day - The Seine	Warwick Hall	10.45am
Fri 25 Oct	Plonk & Pudding Party	Baptist Church Burford	7.45pm
Sat 26 Oct	Craft in Action	Warwick Hall	10-4.30pm
26 Oct-3 Nov	Cotswold History Festival - see article	Cirencester	
1 - 2 Nov	Cotswold Festival of Music - see article	Northleach Church	
Sat 2 Nov	Charity Sale Christmas Items, Bric-a-Brac	Tolsey, Burford	10-3pm
Sat 2 Nov	BEAGles Repair Cafe	St Johns Church Hall Carterton	TBA
Thu 7 Nov	Tolsey Museum Book Launch Event	Burford Baptist Church	7.30pm
Tue 12 Nov	FABWI Talk - Pre-Raphaelite Sisterhood	Baptist Church	7.30pm
Sat 16 Nov	Kitchen Garden Workshop - see article	Asthall Manor	
Sat 23 Nov	Fun Concert	Taynton Church	6.30pm
Sat 23 Nov	Yunus & Eliza (bronze artists) - see article	Asthall Manor	
Sun 24 Nov	Burford Singers Concert	Burford Parish Church	7.30pm
Fri 29 Nov	Burford Christmas Market	Burford Parish Church	TBA
28-30 Nov	Wychwood Players - It's a wonderful life	New Beaconsfield Hall	TBA
Sat 1 Dec	Yunus & Eliza (bronze artists) - see article		

PLEASE remember to give us **DAY, DATE and TIME** when providing information about forthcoming events to ensure the full and correct details are published. Thank you.  
Editors

Sometimes this information is changed without notification to us, so please do check before turning up to an event.

## REGULAR LOCAL EVENTS, CLUBS AND SOCIETIES

Aerobics	Monday and two on Thursday	Warwick Hall Monday 6.15pm, Thursday 11.45 and 6.15pm	Gill Hames 822971 gillianhames46@gmail.com
Astally Arms	Last Friday of the month	Memorial Hall Asthall Leigh	From 7.00 pm
Badminton Group	<b>Monday</b> nights	Burford School 8-10pm. Friendly, all abilities	Kevin 704655 scareyradar@yahoo.co.uk
BEAGles aka Burford Environment Action Group	Third Monday of the month	The Prince of Burford	7.30pm
Burford Bridge Club	Every Tuesday Joining Fee £30 Monthly Session Fee £12.00	Warwick Hall Contact 07831 301886 bbc/office@mail.com	5-7pm
Burford Badminton Club	<b>Tuesday</b> nights 8-10pm	Burford School - fun, social, all abilities	Vijay 891043 vijaysmobile@gmail.com
Burford Crafters	3rd Wednesday of the month	Burford Library 2.30-3.30	Judith Butcher 01993 824194
Burford & District Society	Meet 7 times a year	Warwick Hall at 7.00pm	Bert Clough, Secretary 07943 720668
Burford Town Bowls Club	Friendly Roll-up all Mondays	Bowls Club from 6.30 pm	Pat Walker 01993 822330 patr47@btinternet.com
Burford Trees care/planting	4th Sunday of the month	Community Allotment - Tanners Lane	lucy.staveley@gmail.com
Coffee and Company	Every Wednesday	St John the Baptist Church 10.30 - 12 midday	Diana Peters 01993 822785
Cub Scouts	Mondays (term time)	Scout Hut 6 - 7.30 pm	Mandy Bielby 07941 470465
Fencing	Tuesdays	Bradwell Village 7-9pm	Keith Money 01982 448295
Fulbrook & Burford WI (FaBWI)	Second Tuesday of every month	Burford Baptist Church Hall	Jennie Craven 07710 103015 thefabwi@oxfordshirewi.co.uk
Fulbrook Coffee am	Every 3rd Thursday	Fulbrook Meeting Place 10.30 - 12	Lyn Bibbings 823640
Fulbrook Fitness Group	Thursday (wef Sept 2021)	Fulbrook Meeting Place 9am	Pat Ferrett 822892
Horticultural Association	Fourth Thursday	Bowls Club - times vary	Janet Copley 01451 844210
North Cotswold Arts Assoc.	Every 2nd Wednesday	Warwick Hall	2-4pm
Pickleball - fun, social sport	Mon 11-1pm, Thu 10-12pm, Fri 8-10pm	Charlbury Community Centre	Vijay 01993 891 043 or vijaysmobile@gmail.com
Pilates Class	Wednesdays 10.00am	Burford Baptist Church	Elizabeth Jarvis cotswoldpilates123@gmail.com
Pilates Class	Thursdays 9.30am. Suitable for men and women	Warwick Hall	Elizabeth www.wellnesscity.co.uk 07932 981023
Power Pilates	Tuesdays 6.45	Warwick Hall	Elizabeth www.wellnesscity.co.uk 07932 981023
Rhyme Time	Friday 9.15-10.00 am Term Times	Burford Library (for under 5's)	Carol-Amy Holdcroft 823377
Rock-a-Tots	Tuesday during Term Time	Warwick Hall	9.45 - 11.15 <a href="http://www.burfordchurch.org/rockatots">www.burfordchurch.org/rockatots</a>
Rotary Burford & Kingham	Monday	The Burford Golf Club	John Smith 07717 883182
Signpost - Coffee and Help	Every Wednesday in term time.	The Warwick Hall, Burford 10.00 - 12 midday	Opportunity to raise worries confidentially
Scouts	Thursday (term time)	Scout Hut 6 - 8pm	Alex Gill 07762161769 burfordscouts@gmail.com
Scrabble	1st Tuesday of each month	Burford Library (free soft drinks)	7pm
The Arts Society Cotswolds	2nd Wed (not July/Aug)	Warwick Hall 11.00	publicity@theartssocietycotswolds.org.uk
The Wychwood Lodge of Freemasons	3rd Thursday Sept-April	The Masonic Hall 31 Sheep Street	Mike 868302 / Allan 822240 wychwood988@outlook.com

## USEFUL CONTACTS + INFORMATION

Please check hours of opening which are subject to change

**Burford Recreation Pavilion** (Children's Events) 01993 823647  
**Burford Pre School** 01993 824031  
**Burford School** 01993 823303  
**Burford Primary School** 01993 822159

**Burford Surgery** 01993 822176  
[www.burfordsurgery.co.uk](http://www.burfordsurgery.co.uk)

**Burford Tolsey Museum**  
 Open seven days a week  
 April to October 2-5pm  
[www.burfordtolsey.org](http://www.burfordtolsey.org)

**Burford Town Council**  
 Tolsey office open Monday, Wednesday and Friday between 9.30 am and 11.30 am  
 01993 823647  
 Email [town.clerk@burford-tc.gov.uk](mailto:town.clerk@burford-tc.gov.uk)  
[www.burford-tc.gov.uk](http://www.burford-tc.gov.uk)

**Carterton Health Centre NHS** 01993 841718 111  
[www.nhs.uk](http://www.nhs.uk)

**Centre for Carers in Oxfordshire** 01295 264545  
[www.oxoncarers.org.uk](http://www.oxoncarers.org.uk)

**Chemist** Reavley's 01993 823144  
**Chipping Norton Veterinary Hospital**  
 Burford Branch 01608 642547

**Churches**  
 Anglican St John the Baptist 01993 823788  
 Roman Catholic 01993 823219  
 Church of SS John Fisher and Thomas More 07967 362885  
 Baptist Church 01993 875214  
 Friends Meeting House

**Citizens Advice Bureau** 0808 2787908  
 Email [admin@cawo.org.uk](mailto:admin@cawo.org.uk)

**Community Transport**  
 Volunteer Link-Up 01993 776277  
 Oxfordshire Comet 01865 323201  
**Emergency Services**  
 Police – non essential 101

**Environment Agency**  
 Floodline 0845 988118  
 Emergency 0800 807060

*Please let us know if any details need amending.*  
[editor@thebridgeburford.co.uk](mailto:editor@thebridgeburford.co.uk)

**Hall Bookings**  
 Baptist Church [gill.crippen@googlemail.com](mailto:gill.crippen@googlemail.com)  
 Burford Town Bowls Club 01993 822330  
 Fulbrook Meeting Place TBA  
 Taynton Village Hall - Lexi Young 07909 913994  
 Warwick Hall Bookings and Information  
[bookings@burfordchurch.org.uk](mailto:bookings@burfordchurch.org.uk)

**Library** 01993 823377  
 Tuesday 13.00 - 18.00  
 Thursday 10.00 - 13.00  
 Friday 10.00 - 13.00 and 14.00 - 17.30  
 Saturday 09.00 - 13.00  
[www.oxfordshire.gov.uk/burfordlibrary](http://www.oxfordshire.gov.uk/burfordlibrary)

**Member of Parliament** 07487 708681  
[charlie.maynard.mp@parliament.uk](mailto:charlie.maynard.mp@parliament.uk)

**Oxfordshire County Council**  
 General Enquiries 01865 815573  
 Highways 08453 101111  
 Faulty Street Lights 0800 317802  
[www.oxfordshire.gov.uk](http://www.oxfordshire.gov.uk)

Oxfordshire County Councillor  
 Nicholas Field-Johnson 01993 878309  
**Post Office** 01993 822174  
[stephencolter@aol.com](mailto:stephencolter@aol.com)

**Recycling Centre**  
 Dix Pit, Lynch Hill, Stanton Harcourt  
 Open 7 days a week 8am - 5pm  
 Thursday late night until 8pm  
 Closed Christmas Day and New Year's Day

**Southern Electric** (Freephone) 08000 727282  
**Thames Water** 0800 3169800

**Travel**  
 Rail Enquiries 08457 484950  
 Public Transport Enquiries 08712 002233

**West Oxfordshire District Council**  
 General Enquiries 01993 861000  
 Out of Hours 01993 705056  
[www.westoxon.gov.uk](http://www.westoxon.gov.uk)

**West Oxfordshire District Councillor**  
 Hugo Ashton 07712 490517

**Witney Hospital Minor Injuries** 01865 903841  
 Open 10.00am – 10.30pm daily  
 Last Patient seen at 10pm

**Witney Police Station, No front counter**  
[www.thamesvalley.police.uk](http://www.thamesvalley.police.uk)

## CHURCH SERVICES

### BURFORD BENEFICE

#### St John the Baptist, Burford

<b>6 October</b>	
Morning Service	11.00am
Evening Service	7.00pm
<b>13 October</b>	
Choral Matins (BCP)	9.30am
Holy Communion	11.00am
Evening Service	7.00pm
<b>20 October</b>	
Holy Communion (CW)	9.30am
All Age Service	11.00am
Evening Service	7.00pm
<b>27 October</b>	
Morning Prayer	9.30am
Morning Service	11.00am
Evening Meeting	7.00pm

Join us every Wednesday at 10.30am for a Holy Communion Service in Burford Church followed by Coffee & Company.

#### St James the Great, Fulbrook

<b>13 October</b>	
Harvest	11.00am
<b>20 October</b>	
Matins (BCP)	9.30am
<b>27 October</b>	
Holy Communion (BCP)	9.30am

#### St John the Evangelist, Taynton

<b>6 October</b>	
Benefice Holy Communion	9.30am
<b>20 October</b>	
Harvest	6.00pm

#### St Mary, Swinbrook

<b>6 October</b>	
Holy Communion	11.00am
<b>13 October</b>	
Harvest	11.00am
<b>20 October</b>	
Morning Service	11.00am
<b>27 October</b>	
Morning Service	11.00am

#### St Nicholas, Asthall

<b>13 October</b>	
Harvest	6.00pm
<b>27 October</b>	
Evening Prayer	6.00pm

**9.30am and 11.00am services in Burford are also live streamed. Swinbrook Service are available to catch up on Monday. These can all be found on our website or YouTube Channel.**

*Tarnia Usher*

### ST JOHN FISHER AND ST THOMAS MORE

Sunday Mass: 9.30 am

Weekday Masses:  
Tuesday - 10.00 am  
Thursday - 10.00 am

For updates please see [catholicchurchburford.org.uk](http://catholicchurchburford.org.uk) or the church noticeboard for details.

*Dan Boyle*

### BURFORD QUAKER MEETING

Pytts Lane, Meeting for Worship every Sunday at 11.00 a.m.

*Myra Ford 01451 810484, or Graham Hadley 01993 875214*

### BURFORD BAPTIST CHURCH

Welcome to Burford Baptist Church. It's now a lovely warm space with a new heating system in place. We want the community to come and use our facilities and we are happy to negotiate rates for hire depending on the event.

We have a growing number of regular users including FAB WI meeting on the second Tuesday evening of the month and pilates meeting every Wednesday at 10am.

Both would welcome new people to join them at BBC.

Do get in touch.

*Gill Crippen*

### SIGNPOST

Come and chat to someone over a cup of coffee about a matter you are struggling with. A team of volunteers from Burford Church will be available to listen and do their best to help.

All matters will be dealt with confidentially.  
The Warwick Hall, Burford

*A service of Choral Matins takes place at St John the Baptist Church at 9.30am on the second Sunday of each month. All are welcome.*

## DIRECTORY OF LOCAL BUSINESSES & SERVICES

Company Name	Business Type	Phone
Antiques @ The George	Award winning, friendly antiques centre	01993 823319
CJD Architects	Chartered Architects	01993 823646
Hickman Brothers Landscapes Ltd	Garden Design and Construction, Landscape and Garden Supplies <a href="http://www.hickmanlandscapes.co.uk">www.hickmanlandscapes.co.uk</a>	01993 822226
Jenny Smith	Spanish & French tutor. Building confidence GCSE/KS2. Experience in schools; DBS check held.	07908 602547
Kendall & Davies Solicitors	Expert, friendly, client-focused legal services with offices in Burford. <a href="http://www.kendallanddavies.co.uk">www.kendallanddavies.co.uk</a>	01993 822025
Taylor and Fletcher	Estate Agents / Chartered Surveyors / Fine Art Auctioneers and Valuers / Commercial Agents / Rural Specialists	01993 220579
Mallams Auctioneers Ltd	Auctioneers and Valuers	01242 235712
Pauline Carter BA AmusLCM CTABRSM MISM	Piano Teacher	01993 774568
Peter Garratt	Painter and Decorator	01451 810376 07788 896496
StayCotswold	Holiday/Short Lets, Relocation, Corporate Stays, Property Search, Sales & Lettings. <a href="http://www.staycotswold.com">www.staycotswold.com</a>	01993 259444
Thomas Ellis-Rees	Clock & Barometer repairs. <a href="mailto:tellisrees@gmail.com">tellisrees@gmail.com</a>	01993 822132
Vick's Byway Garage	Bushey Ground, Minster Lovell, Witney, OX29 0SW. MOTs by arrangement	01993 823142
VJ Hancock & Co Ltd	Certified Accountants / Chartered Tax Advisers <a href="http://www.vjhaccountancy.co.uk">www.vjhaccountancy.co.uk</a>	01993 822817
Lionheart Later Life Planning and Probate	Wills – Lasting Powers of Attorney – Trusts and their registration – Fixed fee Probate – Equity Release and Free Financial Advice. <a href="http://www.lionheartlaterlifeplanning.co.uk">www.lionheartlaterlifeplanning.co.uk</a>	07769 730616.
EIWell	Physiotherapy, Occupational Therapy, Nutrition Helping people stay independent as they get older	01865 238185
Burford Foot Clinic	Chiropody Castles Yard, Pytts Lane, OX18 4SJ	01993 200980
Adam Carter Chauffeur Services	Local Private Hire Chauffeur <a href="http://www.adamcarterchauffeurservices.co.uk">www.adamcarterchauffeurservices.co.uk</a>	07920 135157
Tony Williams	Welding/Brazing/Soldering & Metalwork Home/Garden & General repairs & alterations	07722334696
Fairways Cotswold Explorer	for all your Airport & Cruise transfers	01993823152 07751472125
The Stone Gallery	Makers of Gold and Silver Jewellery, agent for Georg Jensen. Paperweights & Pictures. <a href="http://www.stonegallery.co.uk">www.stonegallery.co.uk</a>	01993 823302
NFU Mutual	Insurance   Pensions   Investments - Call your local Witney agency	01993 776716
Patti Good	Therapist, Teacher & Healer Free Online Guided Meditation Classes <a href="http://www.pattigood.com">www.pattigood.com</a>	07880 998568
Radnor Martin	Estate agents covering Burford and the surrounding villages	01993 765115
TC Garden Services	Gardening, Landscaping, Patios, Decking, Fencing & Gates, Raised Beds. Contact Tony for a free quotation. <a href="http://www.tcgs.uk">www.tcgs.uk</a>	07771 888304
Samantha James	Regarded organic - Private Hairstylist - Experienced. Email - <a href="mailto:samloujam@googlemail.com">samloujam@googlemail.com</a>	07772 601495
J Coles Plumbing & Heating	For all your plumbing emergencies/needs and bathroom refurbishments.	07947693427
Oxford Construction	Building, Groundworks and Project Management Services Email; <a href="mailto:enquiries@oxfordconstruction.co.uk">enquiries@oxfordconstruction.co.uk</a>	01865 922001
Grimebusters	Dirty carpets? Upholstery? Call Grimebusters - your local professional cleaners. Competitive rates. Free estimates.	01993 868924
Woodgrove Estates	Contemporary offices to let in Fulbrook. <a href="mailto:office@woodgrove-estates.co.uk">office@woodgrove-estates.co.uk</a>	01993 640004
Piano with Victoria	Lessons for all ages and abilities in Burford. ABRSM + improv / songwriting lessons.	07737493980



# CAR STORAGE IN THE COTSWOLDS

CELEBRATING 15 YEARS OF DELIVERING AN EXCEPTIONAL SERVICE

- CAR STORAGE
- TRANSPORT
- WORKSHOP
- Discrete locations with state of the art security
- A professional team dedicated to the care and maintenance of your vehicle
- We curate perfectly controlled environments for your vehicle



The Classic Motor Hub, Old Walls, Ablington, Bibury GL7 5FF

Based at the historic site of RAF Bibury in the heart of the Cotswolds, The Classic Motor Hub has something for everyone on our five-acre site; multiple showrooms featuring a range of fabulous classics for sale. We also offer a bespoke car storage and care facility, plus we host multiple classic motoring events every year.

## CONTACT US

+44 (0)1242 384092 : STORAGE@CLASSICMOTORHUB.COM : CLASSICMOTORHUB.COM

THE CLASSIC  MOTOR HUB



16th October 2024



### Beethoven Horn Sonata & Brahms Horn Trio

Nicholas Korth – Co-Principal Horn at the BBC Symphony Orchestra  
Michael Bochmann – Violin  
Paul Turner – Piano

*A rare chance to hear one of the UK's horn virtuosi*

Beethoven Horn Sonata Op. 17  
Cesar Franck Sonata for Violin and Piano in A  
Brahms Trio for Horn, Violin and Piano in Eb Op. 40

7:00 pm Burford School

Tickets £20

Season ticket (6 concerts) £72 - includes a glass of "fizz"

[www.lenthallconcerts.co.uk](http://www.lenthallconcerts.co.uk)

[www.ticketsource.co.uk/the-lenthall-concert-society](http://www.ticketsource.co.uk/the-lenthall-concert-society)



Classic Fresh-Baked British Loaves,  
Breakfast Favourites, Artisan Coffee,  
Scrumptious Toasted Sandwiches,  
Quiches and Home-Baked Pastries.

There's always something to enjoy at  
Burford's Bakery on the Hill.

Open 7 Days a week from 8am-5pm

53 High Street, Burford  
01993 823898



FOR YOUR LOCAL GENERAL BUILDING REQUIREMENTS



**SPECIALIST IN DRY STONE WALLING**  
**BRICKWORK - BLOCKWORK**  
**PLASTERING - ROOF REPAIRS**  
**INTERNAL AND EXTERNAL**  
**PAINTWORK -LANDSCAPING**  
**TILING - CARPENTRY**

**BASED IN BRIZE NORTON**  
**HIGHLY RECOMMENDED**  
**REFERENCES AVAILABLE**  
**07866 748481**



—Seth—  
**DIXON**  
•DESIGN & BUILD•

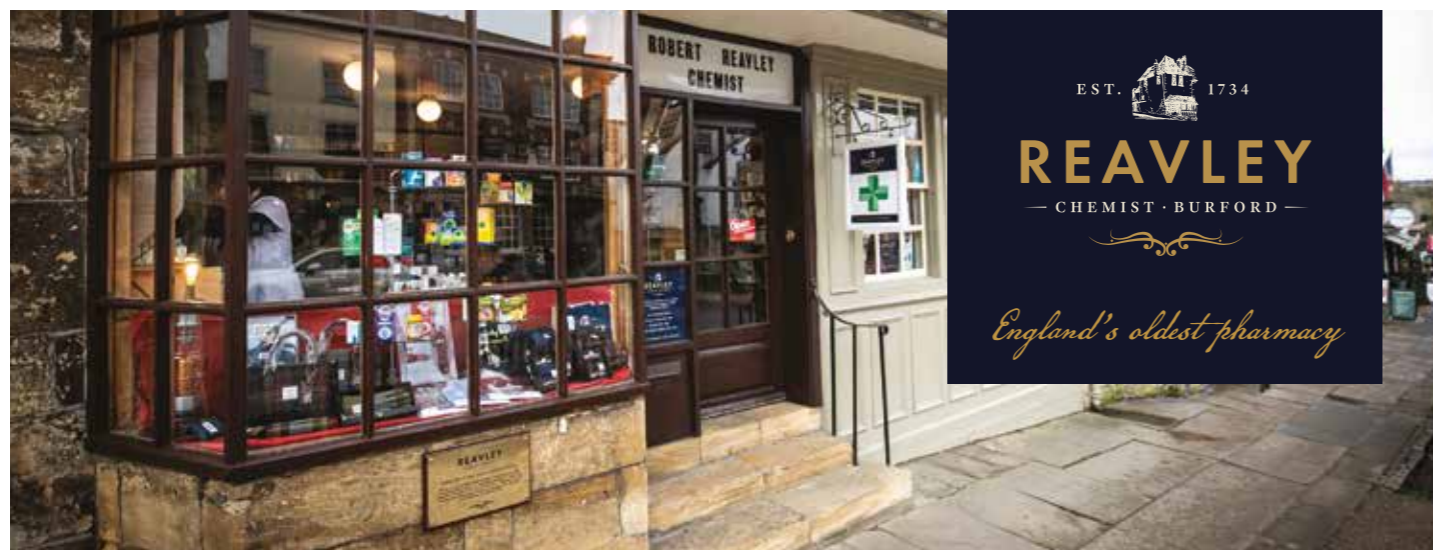
Your Planning, Building & Renovation Partner

From a simple extension, delicate renovation to a new build  
Applying traditional styles within modern day building techniques  
Individual bespoke ideas and plans  
Vigorous cost management  
Call for a no obligation chat to discuss your plans

*Making your dreams a reality*

07793 74 73 72

info@sdd-b.com www.sethddb.com



EST. 1734  
**REAVLEY**  
—CHEMIST · BURFORD—

*England's oldest pharmacy*

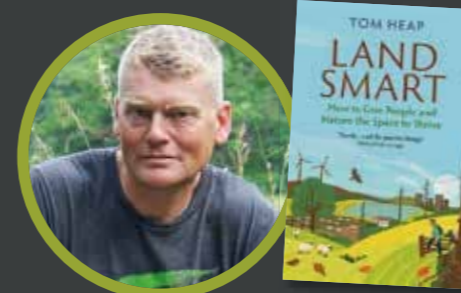
- NHS & Private Prescriptions
- Professional Lifestyle & Healthcare Advice
- Wide Range of over the Counter Medicines
- Stockists of Premium Beauty Brands
- Private Consultations
- Flu & Covid Vaccinations (Seasonal)
- Traditional Remedies
- Yellow Fever Centre
- Travel Clinic Consultations & Vaccinations
- Delivery Service Available

Open 6 days a week | Monday – Friday 9am – 6pm | Saturday 9am – 5pm  
Reavley Chemist, 124 High St, Burford OX18 4QR | 01993 823144 | info@reavley.co.uk | [www.reavley.co.uk](http://www.reavley.co.uk)

# What's On at FarmED...



An evening with your favourite author.



**An evening with Tom Heap**  
Thursday, 10th October, 18:30 – 21:00

Broadcaster and author Tom Heap, in conversation with FarmED Founder, Ian Wilkinson as they talk about Tom's new book *Land Smart: How to Give People and Nature the Space to Thrive*.



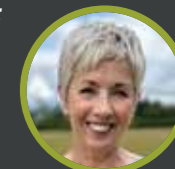
**Home Made with Kate Humble**  
Friday, 18th October, 18:30 – 21:00

Television presenter and writer, Kate Humble, talks about her inspiring new book, *Home Made*, a celebration of everyone who makes and grows the food we eat.



**The Archers Unseen**  
Thursday, 24th October, 18:30 – 21:00

Celebrate the official book launch of *The Archers Unseen: A Secret History of Ambridge*. Julie, the author, will be in conversation with Archers Editor, Jeremy Howe, and the show's Farming & Countryside Advisor, Sybil Ruscoe.



**Sunday, 6th October, 10:00 – 16:30**

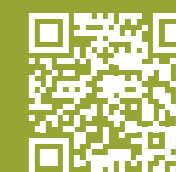
Great food, music, activities and more. Joins us to celebrate the harvest season with your local community.



Apple Day

**Tuesday, 22nd October, 09:45 – 14:00**

Join us as we celebrate the fruit from our heritage orchard, including apple refreshments and a delicious lunch.



To book tickets to any of our events please scan the qr code above or visit [Farm-ed.co.uk](http://Farm-ed.co.uk)

+44 (0) 1993 402403  
hello@farm-ed.co.uk  
www.farm-ed.co.uk

FarmED, Station Road, Shipton-under-Wychwood, Oxfordshire, OX7 6BJ

@RealFarmED

# E TAYLOR & SON FUNERAL DIRECTORS

Private funeral home  
Memorials supplied and renovated  
Here to help 24 hours per day

**01993 842421**  
Corbett Road, Carterton, OX18 3LG



## Gateway Furniture & Design Burford

A solid oak table with square tapering legs - can be made to any size in various finishes to your own specifications - 6 week delivery

Tables built to your own specifications in 6-8 weeks

Monday-Saturday 10am-5pm,  
Sunday 1pm-4pm

Cheltenham Road, Burford Roundabout,  
Burford, Oxon OX18 4JA  
01993 823678

Our online brochure can be downloaded from our website  
[www.gatewayantiques.co.uk](http://www.gatewayantiques.co.uk)



## COTSWOLD INNS & HOTELS



↔ A COLLECTION OF SEVEN 3 & 4 STAR HOTELS ↔

↔ ALFRESCO DINING ↔

↔ SECLUDED GARDENS ↔

↔ ROSETTE AWARDED RESTAURANTS ↔

↔ PERFECT WEDDING & CONFERENCING LOCATIONS ↔

TO MAKE A RESERVATION PLEASE EMAIL  
[enquiries@cotswold-inns-hotels.co.uk](mailto:enquiries@cotswold-inns-hotels.co.uk)

or book online at [www.cotswold-inns-hotels.co.uk](http://www.cotswold-inns-hotels.co.uk)



The Bear of Rodborough  
Stroud  
T 01453 878522

The Swan Hotel  
Bibury  
T 01285 740695

The Lamb Inn  
Burford  
T 01993 823155

The Bay Tree Hotel  
Burford  
T 01993 822791

The Manor House Hotel  
Moreton-in-Marsh  
T 01608 650501

The Hare & Hounds Hotel  
Tetbury  
T 01666 881000

The Close Hotel  
Tetbury  
T 01666 502272

## CP Home Improvements



CP Home Improvements ... just a phone call away!



Windows & Doors  
Bi-fold Doors  
Conservatories  
Orangeries  
Soffit Facia & Guttering  
Replacement Blown Units



Tel .... Call Chris on 07980 881104  
Highly Recommended by the residents of Burford

## STOW RENTAL PROJECT



DESIGNER INSPIRED  
STUDIO  
150 The Hill  
Burford OX18 4QU

OPEN 7 DAYS

Appointments please  
01993 824690



KITCHENS  
BEDROOMS  
BATHROOMS

DESIGNED CRAFTED  
COMPLETE INSTALLATION

www.burfordkitchensandinteriors.co.uk

## Free informal Valuation Mornings

18 October & 8 November  
No appointment necessary



A 19th century fancy-link long belcher link chain Sold for £4,800

Mallams  
1788

to include Silver, Jewellery, Studio Glass, Pictures, Works of Art and Asian Art

10.00am – 12.30pm  
Warwick Hall, Burford OX18 4RY



www.mallams.co.uk

AUCTIONEERS AND VALUERS SINCE 1788

Woodgrove Estates

Contemporary Offices to Lease  
Fulbrook OX18 4BH



The View



Available NOW!

New office space ideal for 4-6 people  
Contact us to find out more and arrange a viewing  
office@woodgrove-estates.co.uk  
01993 640004

Woodgrove Farm offers a range of office sizes and layouts and all benefit from;



Private parking



Site-wide wireless fire alarm with 24/7 remote monitoring



Superfast FTTC connectivity



Private kitchenette



Individually controlled electric heaters



Private washroom



Friendly helpful landlords

www.woodgrove-estates.co.uk



ROOMS AVAILABLE TO HIRE

### BURFORD QUAKER MEETING HOUSE

Quiet central location peaceful period premises with kitchen and garden

IDEALLY SUITED FOR:-

personal consultations art writing studio  
stud circles group meetings  
musical activities

Contact:

igelraithwaite@el  
ue@shnton.el  
mail@asco@mill@aol.com

# Barguss CONSTRUCTION LTD

Historic and listed building specialists

Restoration ■ Extensions ■ Decorating ■ Refurbishment

The Old Bell Foundry  
45 Witney Street  
Burford  
Oxfordshire  
OX18 4RX



LABC Regional Winner

Tel: 01993 824703

email: office@barguss.co.uk

web: www.barguss.co.uk



Oxleaze Farm  
Filkins, Lechlade  
GL7 3RB

07741 182858

audri@audrischaay.com

## IS YOUR HOUSE WATERTIGHT?

Get ahead of the game by calling now for a free "roof MOT".

- Get your roof inspected with photographic evidence.
- Gutters, downpipes & valleys checked & tested.
- Moss removal, treatment & solar panel washing.
- All manner of roof repairs with not scaffolding!
- Bird proofing, living roofs, loft insulation, asbestos removal.
- We are certified Velux installers, endorsed by "TrustMark"

If it's on your roof, it's our business!

Don't get caught out in the rain, get it done!

[www.roofmot.com](http://www.roofmot.com)

[info@roofmot.com](mailto:info@roofmot.com)

Call Tosh on 07928 511 444 for your free advice.

Or Forbes on 07904 229 370 to book an appointment.



Architectural practice which combines sensitive, imaginative building and garden design with technical expertise and project management skills, all tailored to suit client requirements.

We operate within The Cotswolds, Woodstock and Oxford, and have a positive relationship with Local Authorities. Please call for an initial, no-obligation discussion and site visit.

Panton Architectural Design, Wood Farm Studio, Woodleys, Woodstock OX20 1HN

t: 01993 810704 e: post@pantondesign.info w: pantondesign.info



# Lie down & Listen™ Personalised Composition Gift

As featured in The Financial Times HTSI, Evening Standard Magazine, BBC R4, Cotswolds Life etc.



Imagine capturing the essence of your loved ones in music. If you were the film director of their life, what would their film score sound like?

Experience the joy of gifting a musical portrait in a unique piano composition created and performed by pianist, composer and founder of Lie Down and Listen **Christina McMaster** and recorded to professional studio quality.

## Presentation Options

- Bring to life with a live concert experience
- Enhance with a beautiful hand written manuscript and personal dedication

## Get in touch

Email: [info@liedownandlisten.com](mailto:info@liedownandlisten.com)

[www.liedownandlisten.com](http://www.liedownandlisten.com)



# RADNOR MARTIN

*your property buying, selling & search agency*

Unit 12 Tannery Yard, Witney Street, Burford, OX18 4DQ

office@radnormartin.com www.radnormartin.com 01993 765115



Hickman Brothers Landscapes Ltd



## GARDEN & LANDSCAPE SUPPLIES

Shop online at [www.hickmanlandscapes.co.uk](http://www.hickmanlandscapes.co.uk)



Contact us on - 01993 822226

[sales@hickmanlandscapes.co.uk](mailto:sales@hickmanlandscapes.co.uk)

### Opening Times

Monday - Friday 07:30 - 17:00

Saturday 08:00 - 14:00



## SKIP & PLANT HIRE



Hickman Bros Landscapes, Shipton Hill, Fullbrook, Burford, OX18 4BZ