

THE BRIDGE

May 2025



Our thanks to Owen Vaughan for this photo of Asthall Church

This monthly magazine covers people and events in our area of the Cotswolds, and is delivered free of charge to residences and businesses in Aldsworth, Asthall, Asthall Leigh, the Barringtons, Bradwell Village, Burford, Field Assarts, Fordwells, Fulbrook, Holwell, Northleach, Sherborne, Shilton, Signet, Swinbrook, Taynton, Upton, Westwell, Widford and Windrush with a wider national and international readership.

Volume 17, Number 4 £1.50



PINEWOOD
Est. 1875



OPEN MORNING

Thursday 15th May

Co-educational day & boarding school for 3-13 year olds
Set in 84 acres of rolling countryside on the Oxfordshire/Wiltshire border



www.pinewoodschool.co.uk | 01793 782205

01993 220 579

burford@taylorandfletcher.co.uk

Taylor & Fletcher



SOLD



SOLD



SOLD



James Skinner
Residential Sales Manager



Alison Denny
Residential Sales



Celebrating 6 years in Burford

Providence House, 49 High Street, Burford, Oxfordshire, OX18 4QA

corky & prince
WEDDING & EVENT FLOWERS

Passionate about Peonies Workshop
Saturday 7th June 2025 - 10am to 12 noon



Dive into summer's floral abundance! Join us at Warwick Hall in Burford for a hands-on workshop where we'll create show-stopping table centrepieces using the season's most captivating bloom. You'll learn the secrets to creating your own floral masterpiece with Fi Passey RHS Chelsea Flower Show medal winner. And for a truly delightful day out, stay for a delicious lunch at Lovage & Thyme cafe.

£65 per person for the workshop

To book your place, please visit www.corkyandprince.com
or call Fi on 07740 589640

FOR YOUR LOCAL GENERAL BUILDING REQUIREMENTS



SPECIALIST IN DRY STONE WALLING

**BRICKWORK - BLOCKWORK
PLASTERING - ROOF REPAIRS
INTERNAL AND EXTERNAL
PAINTWORK - LANDSCAPING
TILING - CARPENTRY**

**BASED IN BRIZE NORTON
HIGHLY RECOMMENDED
REFERENCES AVAILABLE
07866 748481**

EDITORS' NOTES

Under the Blanket

To Witney, as Pepys might have written, where walking along the High Street we did espy the Blanket Hall. Somehow in all our years in the area we had never visited it. In partial defence we should point out that it was only reopened in its present form a few years ago. It was built in 1721 for the Company of Witney Blanket Weavers.

In the days when Witney was synonymous with blankets, every blanket made in the town was taken there to be weighed and measured and it served as a meeting place for members of the company. It became redundant in the eighteenth century when the measuring was done elsewhere, and blankets themselves later became largely redundant owing to the irresistible march of the duvet.

It was then used for all sorts of purposes including as a brewery, a lemonade factory, an engineering workshop and a registry of births, marriages and deaths. It now sells, well, blankets, supplied by the Cotswold Woollen Weavers from Filkins, and various other items. There is a collection of historical artefacts and a coffee shop.

And, to our surprise, a reminder of home in the form of a beautifully carved panel showing our very own high street. This was made to commemorate "1000 years of Oxfordshire". From what point did they start counting?



Pasta Time

Trying to locate a business a little to the south of us, we looked at Google Maps and spotted an entry for "Haythrope [sic] estate macaroni farm." This immediately brought to mind the BBC April Fool in which Richard Dimbleby showed what purported to be spaghetti trees. A macaroni farm sounded very exciting. Sadly the prosaic explanation is that the place is simply called Macaroni Farm as in the nearby Macaroni Downs. Perhaps one of our learned local historians can explain the origin of the name?

Democracy in Action

There are two events of a political nature in May, both referred to elsewhere. One is the election on 1 May of a county councillor for the Burford & Carterton West ward. There are six candidates, details of whom can be found on the WODC website under Current and Future Elections. The other is the Burford town annual meeting on 21 May. This is your chance to cross-examine your councillors on whatever local issue is bugging you: traffic, parking, Airbnbs, bin collections, global warming or anything else. Politics in the raw. Or you might want to thank them for all the hard work they put in on our behalf.

BURFORD TOWN COUNCIL

At our April Council meeting, Burford Town Council, in agreement with Oxfordshire County Council, decided to no longer pursue the idea of a coach parking drop-off/pick up parking area on Sheep Street as previously proposed.

We will be inviting representatives of the coach operators to visit Burford for a meeting and tour of the town, along with an officer from OCC, to see where they would recommend a suitable safe area for bringing tourist coaches to the town and park in a safe manner with good safe access to the town centre, as tourism is so important to the town's vibrancy.



If you ventured up Tanners Lane recently, you may have seen this on the left, which has now been expertly repaired as shown underneath by our ground maintenance team of David and Jack. Well done, you two! I'm sure you all see them around the town, keeping everything spick and span.

We are hoping that the new zebra crossing at the top of The Hill will be installed in this new financial year. There are still several issues to resolve, but we will work with OCC to make it happen as soon as possible.



VE day on the 8 May will have various events going on. Details of them are elsewhere in this edition. Let us hope for fine weather.

Our annual Town Meeting will take place on 21 May at 7pm in the Warwick Hall. This is your chance as residents of Burford to ask your councillors questions and hear what has been achieved in the last year. Please come along and see what your council do and meet your councillors. If you have a specific question, please email it to Christina, our Town Clerk at town.clerk@burford-tc.gov.uk in advance, so we may prepare a full answer for you.

On good and bad news; we welcome Dan Derry who has been elected by council to join us. He brings new skills to our council. However, after some 20 years, our ex-mayor John White has decided to step down as a councillor. He will be sorely missed as he could always be relied on to provide sage advice. I wish you well, John!

Peter Higgs - Mayor



THE BRIDGE TIMETABLE AND CONTACTS

The closing date for entries to the editorial sections of the magazine is 10th of the month preceding publication. Please send articles and information to:

editor@thebridgeburford.co.uk

Advertisements need to be booked and artwork provided before the 10th of the month preceding publication. Please contact:

advertise@thebridgeburford.co.uk

DISTRICT COUNCILLOR REPORT

I write this as we enter the 'pre-election period', when we should not make policy announcements of any kind. So I won't. Nor will I make any political statement as that is not the purpose of this column. However, I will encourage everyone to go out and vote. This poll this year is particularly notable as it is the last time we will vote for our representative county councillor. In Oxfordshire (and Gloucestershire), our county councils will cease to exist in their current forms by 2028 (probably) and be superseded by one or more Unitary Councils.

But the main reason to vote is to keep local democracy alive and well. Your councillors, whether at parish, town, district or county level, do a huge amount to support local residents and are a vital conduit for residents' views. You can support them/us by making the effort to get down to the polling station and vote!

Now, what could be less political than householder planning applications?

Most readers of The Bridge live in the Cotswold National Landscape (formerly known as an Area of Outstanding Natural Beauty). Many of us live in a Conservation Area, and some of us own a Listed Building. All of us are lucky to be doing so, and enjoy the beauty of our surroundings. But this privilege gives us the responsibility to preserve this beauty for the future, and we have to accept restrictions on what we can do to change the external (and sometimes the internal) appearance of our houses.

Our Districts are our Local Planning Authorities. Their teams of planning officers are responsible for ensuring that development only takes place in accordance with national policies and our local District and Neighbourhood Plans. They are there to help and offer a pre-application service to provide guidance on what is likely (or unlikely) to be acceptable. If this advice is followed, subsequent planning applications are much more likely to be approved.

All applications are public and comments from neighbours, local parish councils and statutory consultees are invited and considered. Applicants who have talked through their plans with neighbours and addressed any legitimate concerns they have raised are likely to receive fewer objections and more support for their application.

Our planners have to consider the application as it is presented. It is not a starting point for negotiations, although if minor changes make it acceptable, these may be suggested. If the applicant wishes to make major changes during the process, the revised plans are likely to be subject to a new round of consultation.

It may sound rather tortuous, but it is designed to be as fair as possible and to protect our residents and preserve our beautiful environment.

Now, go and vote!

Hugo Ashton

District Councillor for Burford, Fulbrook and Taynton
hugo.ashton@westoxon.gov.uk or 0771 2490517



SARAH ROCHE ART IN FELT

The Medieval Bridge at Burford

Hello fellow Burfordians! My name is Sarah Roche (nee Lefort) and, being a relatively new arrival to Burford, I am pleased to have the opportunity to introduce myself to you via The Bridge. I am a local landscape artist, recently moved into Witney Street with my family from the Yorkshire Dales, though no stranger to the area having been a pupil at Burford School from 1982 through to 1988.

Without, as yet, a home studio space and with Oxfordshire Artweeks on the horizon, I and two of my fellow artists (Vikki Lafford-Garside and Amanda Hislop) are kindly being hosted at **Witney Blanket Hall** (www.blankethall.co.uk) **from the 17 – 26 May**.

My medium is textiles, but unusually I work with dyed wool tops, Blue-faced Leicester curls and Mulberry silks using the wet felting process - the simple alchemy of soap and water on natural and very sustainable materials.



I take inspiration always from my surroundings – up until August of 2024, the wild and impossibly beautiful Yorkshire Dales. Now back in my native Oxfordshire, I have been rediscovering the quieter beauty of an entirely different kind of landscape.

Old Man Willow



Luskentyre (commission)

Please do stop in to see my work at Witney Blanket Hall, and look out for pop-up exhibitions in the area over the coming months.

I am also more than happy to take commissions if you have a view that is special to you and can be contacted on SarahRocheArtinFelt@gmail.com

WE ARE ON X/TWITTER

To get the latest news follow us on X (the platform previously known as Twitter) [@BridgeBurford](https://twitter.com/BridgeBurford) or go to our website www.thebridgeburford.co.uk.



INVITATION – to all to join us in celebrating
“Afternoon Tea” - 80 years of VE day
 Thursday **8th May** between **2pm-5pm**

Theme 1940's
Live Singer



Ruth Lucy – to entertain you, singing tunes from 1940's

Arrive anytime,
 enjoy your tea
 and kindly
 allow others to
 have a seat too
 thank you.



Display of memorabilia and photos from WW II



Free event – Donations greatly received for SSAFA

**VENUE - Burford Baptist Church Hall,
 Witney Street, OX18 4SN**



EDITORIAL POLICY

As is customary with publications, the decision of the editors on what can and cannot be published is final. In particular, they will edit or decline to publish anything which in their opinion includes personal attacks on any individual, is expressed in unduly partisan language or is offensive, in bad taste or potentially defamatory. Opinions expressed by contributors are entirely their own and the appearance of any letters or articles in The Bridge does not indicate that the editors agree with them. Items may also be edited and may be rejected. Where items or services are offered for sale, or advertised, the provider is responsible for ensuring that the goods or services are safe and of good quality. The editors may refuse to publish advertisements or other statements about unsuitable items or services. The Bridge does not accept responsibility for the accuracy of advertisements and does not endorse any goods or services which are advertised. All items submitted for inclusion must give the name and address of the writer and an email address or telephone number. By submitting any article, announcement, letter or advertisement to The Bridge you are deemed to have agreed to the above.

All advertisements in The Bridge are accepted subject to The Bridge Terms and Conditions of Advertising 2021 which can be viewed on our website www.thebridgeburford.co.uk.



RIVER DAY RETURNS

A Community Celebration on Long Meadow Swinbrook

After a six-year hiatus, the much-loved Swinbrook, Asthall and Widford River Day is making a grand return! The highly anticipated River Day Revival is set to take place on 14 June 2025 at Long Meadow, Swinbrook. This event is not only about fun and festivities but also serves a greater cause—proceeds from the event will support the Asthall, Swinbrook, and Widford Village Hall refurbishment and WASP (Windrush Against Sewage Pollution).

A Cause Worth Celebrating

The event organisers, in collaboration with WASP, are working alongside Thames Water to ensure that the River Windrush meets the necessary water quality standards for permitted bathing. In the run-up to the event, water quality will be regularly tested to ensure a clean and safe river for all participants. This effort underscores the commitment of the community towards maintaining a pollution-free environment and safeguarding the natural beauty of the river.

An Exciting Day for All

The River Day Revival promises a fun-filled day for people of all ages. The festivities will kick off at 2:00pm and will feature a range of exciting activities, including:

- The iconic raft race – Expect thrilling competition as participants paddle down the river. This year's theme is Revival.
- A lively duck race – A favourite with plenty of excitement.
- Best Dressed – Children and adults in the Revival theme.
- Dog show – A showcase of adorable canines.
- Bar and BBQ – Enjoy delicious food and refreshing drinks.
- Tea tent – A perfect spot for a relaxing afternoon break.
- Vintage car show – A display of stunning classic automobiles.
- Traditional Fete Games- Splat the rat, welly wanging,
- Live music – Entertainment to keep the atmosphere vibrant throughout the day.

How to Join the Fun

Don't miss out on this fantastic fun day. For full details, visit www.swinbrookandwidfordpc.org.uk/river-day-revival or instagram [@riverdaywindrush](https://www.instagram.com/riverdaywindrush) To purchase tickets, head over to Eventbrite River Day Revival 2025.

We hope many of you will join us at the River Day Revival and be part of this incredible community gathering, all the while supporting local initiatives and a cleaner, healthier River Windrush.

Angela Potts

Don't forget to look at our website www.thebridgeburford.co.uk too for updates on local news, previous features and topical photographs

And for more photos about Burford events do look at Burford Life on Facebook

SUMMER 25 AT ASTHALL MANOR



This year, instead of garden open days, we have some exciting theatrical and musical events to tempt you with. They all include access to the garden as part of the ticket price.

Tim Mitchell's exceptionally helpful series of ecological growing workshops will continue in the walled garden, and again, a walk around the whole garden is included.

Full details and booking for these and some of our autumn events are on our website: asthallmanor.com/what's on

Workshops in the kitchen garden

- 10 May** – Sustainable Low Intervention Beekeeping
- 17 May** - Gardening with Wildlife
- 21 June** – Turning Waste into Gold – compost and natural fertilisers
- 28 June** – Let Food be thy medicine (Guest workshop by Jean Smith)
- 13 Sept** - Seed Saving: Closing the Loop on your food growing

23 – 25 May – Oxford Chamber Music Festival 25th Anniversary Celebrations:

- Fri 23 May** – Concert in St Nicholas Church 7-8pm (Bach, Takemitsu, John Thow) Gardens open from 4pm
- Sat 24 May** – 11-2 pm *Where Heaven Meets Earth* – a painting workshop with Kieran Stiles
 3-4pm *Painting Performance*: A dynamic live painting and musical improvisation, bringing two entangled art forms into conversation to explore the dynamism of creativity. Free and no need to book.
- Sat 24 May** – *Painting Performance* – as above
- Sat 24 May** – Concert and dinner: Gardens open from 4pm, Concert (Mozart, Arvo Pärt) 5.30pm in St Nicholas Church, followed by drinks and dinner in the Ballroom
- Sun 25 May** – Gardens open from 1pm, Concert (Vivaldi and Respighi) 3-4pm in St Nicholas Church

6-8 June – *In the Footsteps of the Mitfords*. For the first time since a socially-distanced version in 2020, Scary Little Girls are back, with their irreverent look at the Mitford sisters, whose childhood home was Asthall Manor. Performing to small groups who move around the site, Scary Little Girls and Chipping Norton theatre bring the experiences, opinions and relationships of the infamous sisters to life through their letters, fiction and memoirs.

Wed 2 July: *Much Ado About Nothing*, performed by the Handlebards. Garden open from 5pm, performance 6-8pm

Sun 13 July: Nature and Environment Book Club 4-5pm in the Manor's new guest kitchen.

For details and bookings, with links to explore all of these events, please visit our website, asthallmanor.com, and go to What's On.

We look forward to seeing you!
 Rosie Pearson

SOUTHROP FETE AND COUNTRY FAIR

Saturday 7 June 1pm - 4pm

Southrop's beloved fete returns! For visitors you may want to know that the correct pronunciation is:

"Suth-er-rup"

With a mention in the Domesday Book of 1086, Southrop, the Cotswolds village with one of the most mispronounced place names in all England, is about as picture postcard as it gets. Add to this the warm character of the people who call it home, and it truly is a wonderful place to live.

Southrop's headline annual event has grown in popularity over the years, thanks to the hard graft residents put in to deliver the charm of a traditional fete in spades. Having started small over a hundred years ago, when live chickens from local farms were handed out as raffle prizes and lumps of bread and treacle swung from trees, today's fete is a brilliant day out. The setting certainly helps – with the road closed, fete-goers can amble amongst honey-coloured cottages and see the classic cars and stalls. The superb Thyme hotel offers up a field for a dog show and beer tent, and bunting criss-crosses the village hall, where delicious afternoon teas are served.

Back by popular demand, the team are staging a Great Duck Race along the River Leach. The only problem is, no one can



find the ducks. Planning meetings resound with "The ducks are missing." "We need to find the ducks!"

southropvillagefete@gmail.com

Facebook www.facebook.com/southropvillagefete

Instagram @southrop_village_events

Gretchen Shoring - gretchen@citizenfilms.co.uk



Lecture on Wednesday 14 May

Sicilian Splendours

We will look at the rich art, architecture and history of Sicily – the largest island of the Mediterranean and, in the ancient world, the wealthiest. First we will see the Carthaginians, Hannibal's people and the first major invaders of Sicily, with their distinctive, enigmatic culture, still visible on the small island of Motya. Afterwards come the Greeks, with beautiful cities such as Agrigento, and Syracuse and Segesta, filled with theatres and temples to the gods. Then we will see Roman Sicily, peaceful and prosperous, with cities such as Syracuse and Taormina, and the sumptuous 'mosaic villa' of Piazza Armerina.



After Rome, and the new Rome of Constantinople, comes the invasion of the Arabs with their revolution in society and agriculture, and then Norman Sicily - an extraordinary artistic flourishing, culminating in the mosaics of the magnificent Norman basilicas. Come and explore this gorgeous island!

Dr Paul Roberts is Research Keeper in the Department of Antiquities at the Ashmolean Museum of Art and Archaeology, Oxford University. Paul has been a lecturer with the Arts Society/NADFAS for over twenty years and has also lectured on numerous cruises in and around the Mediterranean. He studied Classics at the University of Cambridge, and Classical Archaeology at the Universities of Sheffield and Oxford. He then lived in Italy for several years, teaching and researching. He has travelled throughout the former lands of the Roman Empire, from Britain to Syria, and has excavated in Britain, Greece, Libya, Turkey and particularly Italy, where he is currently working on a Roman Villa in the Molise region of the Central Apennines. His research focuses on the daily life of ordinary people in the Greek and Roman worlds, and he has written books and articles on Greek and Roman daily life, Pompeii and Herculaneum, Sicily, Roman Emperors, mummy portraits, and Greek and Roman ceramics and glass.

Dr Roberts is now writing a history of Rome through its monuments and the Emperors who built them. From 1994 to 2015 he was Senior Roman Curator in the Greek and Roman Department at the British Museum, where he curated the exhibition Life and Death in Pompeii and Herculaneum (2013). Arriving in the Ashmolean Museum, Oxford in 2015, in 2019/20 he curated Last Supper in Pompeii, a tribute to the Roman love affair with food and wine.

This hybrid lecture will be held at the Warwick Hall, Church Green, Burford, OX18 4RZ at 11am and via Zoom. Please be seated by 10.50 for notices of upcoming events. Numbers are no longer restricted but booking is recommended to reserve a place). Non-members are welcome (space permitting) at a charge of £10.

Further information will be circulated via the newsletter and bookings can be made via the website (see below.) or please contact Lisa Etheridge on 07918 180895 for a booking form.

To learn more about The Arts Society Cotswolds and to see what lectures, Special Interest Days and other activities are planned for the future, please see the website www.theartsocietycotswolds.org.uk
Or contact Alison Morgans on 07771 817050

THE EIGHTEENTH ENGLISH MUSIC FESTIVAL

Dorchester Abbey 23-26 May

The English Music Festival celebrates the brilliance, innovation, beauty and rich musical heritage of Britain.

The opening concert, performed by the BBC Concert Orchestra and conductor Martin Yates, features the world première of a symphony by Stanley Bate together with rare Ralph Vaughan Williams and the Cello Concerto of Sir Arthur Bliss performed by Raphael Wallfisch, alongside works by Alwyn and Delius.

World première and first public performances feature amongst chamber works by Norman O'Neill, Alan Rawsthorne and Herbert Howells.

Guest artists include platinum award-winning St Cat's Ensemble; the inaugural wind band to appear at the Festival. John Andrews raises the baton for the Royal Ballet Sinfonia, and there are performances from Berkeley Ensemble and pianists Hiroaki Takenouchi and Simon Callaghan.

Choral and vocal highlights include the Godwine Choir, Excalibur Voices, and a recital by tenor Ben Alden and pianist Dr Andrew Plant.

Relaxing late-evening listening includes performances from classical guitarist Jack Hancher, and singer/composer Stef Conner, who sets mediaeval lyrics, folksongs, and ballads.

Dorchester Abbey is the venue for the duration of the long weekend with talks in the village hall as well as a Festival Lunch (pre-booking required). There is dedicated parking, and a mini-bus shuttle operates to/from Didcot Parkway station - bookings can be made via the website.

Programme and booking: www.englishmusicfestival.org.uk

Tickets are on sale from the website and by means of a postal booking form.

Tickets for individual concerts will be available on the door, subject to availability.

Full Festival and Day Passes are also available.

Karen Fletcher

LENTHALL CONCERTS 2025/25

The Lenthall Concert Society finished the 2024/25 season on 26 March with an outstanding concert given by the acclaimed cellist Rafael Wallfisch and his accompanist Simon Callaghan. Attended by our best audience yet of over 200, they all enjoyed the varied programme of Beethoven, Kodaly and Elgar. Rafael and our artistic director Michael Bochmann met at music college and have been friends ever since. They played the Kodaly cello and violin duet together at the concert – a work they first played as students. Our audience numbers this year have been more than 150 at each concert of which 75% are subscribers for all performances, giving the series a comfortable loyal base upon which to plan for future seasons. We're on that now!

The committee would like to acknowledge the contribution our sponsors make – Burford Garden Centre, Cotswold Wildlife Park, Tayler and Fletcher and Oxford Creativity. Their contribution ensures we can keep our subscription tickets prices low whilst also attracting the best performers. We are always looking for more sponsors, so if you or anyone you know is interested in supporting our activity with a sponsor donation, we are interested in meeting them.
Geoff Haines

TAYNTON OPEN GARDENS

Sunday 15 June 2-5pm

Come along to Taynton's Open Gardens event this year and enjoy walking through many of the established country gardens normally hidden away from public view. There will also be afternoon teas available so that you can take a break during the afternoon. Whether you are a knowledgeable horticulturist or a keen amateur gardener, a delightful afternoon is assured amongst Taynton's most lovely gardens.

Admission to all the gardens is £5 and children have free entry.

All proceeds will go towards the maintenance and upkeep of the fabric of Taynton's church, St John the Evangelist.

Deric Keepin



BURFORD & DISTRICT HORTICULTURAL SOCIETY

Ponds and water features were the theme for our March meeting, in a practical and entertaining talk by returning speaker Philip Aubury. We learned the what, why, where - and importantly the what NOT of installing and planting up ponds and water features. Whilst aesthetics were covered (don't put a kidney-shaped pond onto a rectangular patio - it just looks odd), the sheer practicalities dominated, whether by "old school" (butyl sheets) or modern (pre-formed liners). Tricks to avoid having to dispose of subsoil by planning a raised edge to the pond were shared. The value of a spirit level was emphasised. Repurposed barrels, cartwheels, and grindstones were shown. The importance of professional installation of power supplies for pumps was emphasised.

Then comes the planting. We were warned about "invasive aliens" and "vigorous natives". The essential contribution of oxygenating plants in aquatic compost (who knew such a thing existed?) topped with gravel was emphasised. We were urged to consider choosing water lilies of the right degree of vigour for the setting. Grim stories of flooding ponds disgorging coy carp into local ditches, and ravenous herons gorging on the same, were recounted.

And the seasonality of maintenance was covered. As with hedge management and bird nesting, so with managing overgrown ponds and frog spawn - don't get the timing wrong!

We began with the assertion that all gardens need a water feature, and came away with no excuse for not installing one. A most satisfactory talk.

22 May will see members and visitors at the talk on the kitchen garden; do consider joining us.

Ruth Reavley

THE BRIDGE INTERVIEW WITH CHRISTINE GIBBONS

In the course of our many interviews with local people we have met those who have led exciting lives and those who have done a great deal of good in different ways. Rarely have we encountered someone who has combined the two as much as Christine Gibbons. She began our talk by saying “What I’ve done is idiotic, but I did it for a particular reason.”

First, her background. She was born in Cleethorpes on the coast of Lincolnshire but has spent most of her life in Oxfordshire. Her first job was working in the advertising department of the Oxford Mail. This was followed by marriage to her late husband John and the birth of two children, Samantha (Sam) and Adam. She then went to work for Cluttons, the estate agents, as their advertising and publicity manager. She was based in their Oxford office but her job covered all their 27 offices. By this time they were living in Barns Lane in Burford.

One event turned out to be a key moment in Christine’s life, although she did not realise this until later. Sam’s best friend, Libby, died of leukaemia at the age of ten. Some years later Sam gave birth to Christine’s first grandchild, Joshua. Christine recalls walking into the hospital and holding Joshua in her arms for the first time. “I suddenly felt guilty that Libby’s mum and dad would never have that moment”. She determined to do something about this. Her chosen cause was CLIC - Cancer and Leukaemia in Childhood. This later merged with Sargent Cancer Care for Children to become CLIC Sargent and now operates as Young Lives vs Cancer. This charity provides day-to-day support to children with cancer and their families, helps them with additional costs such as travel and heating, runs Homes from Home near major hospitals in which families can stay and provides bereavement support.

Her first effort was to do a sponsored walk on the Ridgeway. Then John, who was a keen golfer, suggested a charity golf tournament. This became a regular event at Studley Wood or the Oxfordshire Golf Club. They found sponsors for the event and recruited celebrities to take part. A motor racing enthusiast, she persuaded Jason Plato and Tim Harvey, both British Touring Car champions, to support the event and Mike Brewer, presenter of the Wheeler Dealers TV show, acted as host. At one of them a sponsor brought along his two (two!) helicopters and gave rides in them at £5 a go.

More challenges came along. The first was a four day bike ride in Israel from Jerusalem to Eilat across the desert “sleeping with scorpions.” She didn’t have a bicycle so she

bought a second-hand one to practise on. “I haven’t ridden one since.” Next was the Three Volcano Challenge which involved climbing Vesuvius, Stromboli and Etna in four days. “I got sponsorship from all over the place”. Back home she organised a couple of balls at St Hilda’s College and one at Blenheim Palace. Various businesses sponsored the decorations and the drinks and donated raffle prizes. Cluttons and the Hartwells car dealership where John worked were main sponsors. She ran a hula hoop championship for a number of local primary schools. “It was fun - the kids loved it.” (“Fun” is a word she uses a lot.).



Christine (R) on Mt Vesuvius



Christine with Jason Plato



Christine (L) in Iceland

She absconded down the JR hospital. “After the first time I said never again, but I did”. Back on the road, she did the Icelandic Trek. This took five days including climbing Hekla (4,892 ft), one of that country’s most active volcanoes. “I had to sleep on ice and wash in geysers.”

Travel had to be curtailed when John suffered a stroke. He could still play golf after a fashion and pleaded with Christine to hold another golf tournament at Witney Lakes. “The money went to the stroke unit at the JR.” She took advantage of being at

home by writing a short book for children about Fido, based on her own dog, Frankie. She sent copies to all and sundry including the Cambridges and Sussexes, near-royalty Frank Lampard (after whom Frankie was named) and Blue Peter, who sent her a badge. That is the only honour she has received for her work, not that she expects any such recognition.

Her local work includes two years as business adviser for the Young Enterprise Group at Burford School. She also organised an art exhibition in Burford for V J Hancock Accountants.

When John had a second stroke they could no longer manage living in Barns Lane so the Stroke Association helped them to find a flat at Hunts Close. John was by this stage using a wheelchair. Christine looked after him for 11 years until his death in early 2020. She remains close to her family. Adam lives in Hertfordshire and is Director of Consulting Services at CGI, which provides IT services to businesses. He has two children, one currently on a gap year and the other studying for A-levels. Sam is the Head of Administration and Finance at the Doctoral Training Centre at Oxford University. Her son Joshua, whose

arrival set Christine on the fundraising path, is now 27 and works for Virgin.

“I am not a goody-goody”, Christine says. “I did it because I could and I enjoyed doing it. It’s been a lot of fun and I’ve met a lot of lovely people.” She has had a great deal of help from people in Burford. She is a little reluctant to name names but she singles out Karen Easton for her kindness in taking Frankie for walks during John’s final illness. Her final words could be her motto: “Just do it!”

Editors



Become a School Governor at Sherborne C of E Primary School

Are you passionate about education and community engagement? Do you have skills and experiences that could positively impact the future of the school?

We are looking for **governors** to join the **Local Governing Body** and help shape the strategic direction of the school. This is a fantastic opportunity to make a meaningful difference while developing new skills and experiences.

About Our School

Sherborne C of E Primary is a small, friendly, and vibrant school at the heart of its village community. The school is dedicated to providing a warm and nurturing environment where every child thrives. The mission is simple: to inspire a love of learning, foster curiosity and independence, and create unforgettable educational experiences that prepare their children for the future.

As part of the Corinium Education Trust, Sherborne C of E Primary School has its own Local Governing Body, which plays a vital role in supporting and challenging the school leadership to ensure the best outcomes for all pupils.

What Does a School Governor Do?

As a governor, you will contribute to the strategic leadership of the school by:

- Working with fellow governors to plan the strategic direction.
- Supporting and constructively challenging the headteacher.
- Challenging existing processes to drive school improvement.

Who Are We Looking For?

We welcome applications from individuals from all backgrounds who are eager to make a difference. However, we are particularly interested in those with experience in: education, social services, mental health, IT/digital expertise or project management.

That said, if you have other skills and a passion for education, we would love to hear from you.

Time Commitment

The Local Governing Body meets five times a year, with meetings held on Tuesdays from 6.00 – 8.00pm. Governors are also expected to attend three evening training events per year, organised by the Corinium Education Trust.

Why Join Us?

Becoming a school governor is a rewarding opportunity that offers a chance to make a real impact on young people’s lives and professional development and leadership experience.

If you are interested in learning more, please contact Kathy Jackson, CET Governance Officer, at clerk@coriniumeducationtrust.net for further details and an application form.

*Chiquita Henson Mark Lees
CEO (Trust Lead) of the CET Chair of the CET Trust Board*

THE BRIDGES OF BURFORD

There are bridges in triplicate in Burford. Not only the grade II* listed Bridge over the Windrush, and also The Bridge Burford, this community magazine, but bridge as played weekly by members of the BBC (Burford Bridge Club), shortly to celebrate its first anniversary.

Following initial discussions from 2023 at Joe Searby-organised events, and a series of email exchanges about a potential Burford Bridge Club a group of players met in May 2024 to discuss progressing the idea. Amir Hashimi took on the challenge of leading the establishment of the club, supported by Terry Hunt and Chris Anderson. The BBC logo was quickly captured, potential venues investigated, membership fees settled and essential equipment purchased. The club was fully launched on 4 June 2024 when the first playing session took place in the Gauntlett Room of the Warwick Hall.



The purpose of BBC was to promote the learning and improvement of playing bridge in a friendly, social atmosphere, and it has fulfilled these ambitions. Members have met regularly on Tuesday evenings from 5-7 pm. The BBC has evolved at a gentle pace to suit its target members, and is now vibrant with enthusiasm. Over the year the standard of bridge played has improved immensely. There is now a total of 30+ members signed up to the BBC, and on most weeks five or six tables play six rounds with 12 duplicate boards. Terry Hunt generously calculates the scores circulating the results to all players. As well as the competitive play members have enjoyed socialising, not least at a very successful Crémant, Fish and Chips Christmas celebration.

BBC has now moved to a new venue at the Burford Baptist Church on Witney Street, Burford. Sessions are held from 5-7pm each Tuesday, and any reader interested in playing at the BBC should contact:

Amir Hashimi on 07831 301886

Deborah Knight

COPYRIGHT © 2025 Copyright in all articles in this magazine is reserved by the respective authors of those articles as identified. Requests for permission to copy or reproduce articles should be submitted in writing to The Bridge c/o Burford Post Office 29 Lower High Street Burford OX18 4RN or by email to editor@thebridgeburford.co.uk



Burford Singers with
 Hannah Andrusier (Soprano)
 Stephanie Garrett (Alto)
 Archie Inns (Tenor)
 Benjamin Watkins (Bass)
 Mar Umberto Kimura – Piano
 Edward Dean - Harmonium
 Conductor: Will Dawes

Tickets reserved at £29, £23, £17, unreserved £15, £12
 Online booking from 12 May (Booking fee applies)
 at <https://www.burfordingers.org.uk/buy-tickets/>
 Phone: 0333 6663366 (free of charge) Monday to Friday,
 9.00AM to 7:00PM (not bank holidays)

Booking in person (unreserved tickets only) from 12 May at
 The Madhatter Bookshop, 122, High Street, Burford OX18
 4QJ

And on the door

Details on our website <https://www.burfordingers.org.uk/events/>

Catherine Martin

BRIAN KAY



As many of you know, Brian and Gilly Kay will soon be leaving the 'Shire for new adventures. Over their fifty years in Fulbrook, they have enriched our lives in countless ways.

On behalf of the Burford Singers, I want to express our deepest gratitude to Brian for his incredible dedication in leading our choir for some 25 years. It has been a privilege to sing under his baton, guided by his musical insight, passion, and endless wit. His leadership has left a lasting

impact on us all, and we will certainly miss seeing both Brian and Gilly in the nave at our concerts.

His leadership has left a lasting impact on all of us, and we eagerly look forward to seeing both Brian and Gilly in the nave at our concerts whenever their schedules allow.

We have no doubt that Sherborne (not the one off the A40, sadly!) will be lucky to have you as their new residents, and we look forward to visiting once you're settled.

Wishing you both a wonderful new chapter filled with happiness, health, and music - Bon voyage! With much love from all of us at The Burford Singers.

Lizzie Bennett, *Chairman Burford Singers*

SPEAKER LENTHALL IN 1659

William Lenthall, whose portrait hangs in the Tolsey Museum, is Burford's most famous son, principally because, as Speaker of the House of Commons in 1642, he refused to help King Charles I, in his vain attempt to arrest five allegedly treasonous MPs. However, Lenthall is also notorious for having insisted that the only words on his tomb should be 'Vermis Sum' - Latin for 'I am a worm'. He died in 1662, and his tombstone did indeed bear those words, though it subsequently disappeared, probably during one of several restorations of the parish church in the 19th century.

According to Raymond Moody, in *A Thousand Years of Burford* (Hindsight of Burford, 2006), there are two theories as to why Speaker Lenthall wanted to be remembered in this way. The first is that the inscription was no more than an expression of Christian humility, the second is that Lenthall regretted the part he had played between 1649 and 1660, when he had failed to save King Charles's life and served several republican governments, including the Commonwealth and the Protectorate of Oliver Cromwell.

However, there is a third explanation of the inscription, which arises from the magnitude of Lenthall's fall from grace in 1659. By then, he had served as Speaker of the House of Commons for almost twenty years, during which he had survived Pride's Purge of 1648, the execution of the king and abolition of the monarchy and House of Lords in 1649, and even Oliver Cromwell's dissolution of the so-called 'Rump' of the Long Parliament in 1653.



Peter Martin kindly researched and found this picture of William Lenthall

Oliver Cromwell subsequently presided over three Parliaments in the 1650s, one of which was bicameral, and during this time Lenthall became Speaker of a new Upper House and was created Lord Lenthall. He even argued unsuccessfully that Oliver should become King; but when Cromwell died in 1658 and his successor Richard Cromwell resigned, the old Rump Parliament was recalled and Lenthall sat once more as its Speaker. However, there was by now a widespread yearning for stability and the restoration of the Stuart monarchy, and a concomitant revulsion against the very idea that the Rump should any longer play a part in the government of the country.

According to the contemporary Diurnal of the diarist Thomas Rugg, cited by Alice Hunt in *Republic, Britain's Revolutionary Decade, 1649-1660* (Faber, 2024), there were many petitions and publications in 1659 which 'jeered the Parliament and called it an Arse and Speaker Lenthall the fart'. Another contemporary pamphlet pointed out that the Rump was 'the back door of the Devil's Arse' and that the Great Rebellion had ended in a stink. So, how would you feel if you had once been Speaker of the House of Commons, and a lord in the Upper House of Parliament, but had then come to be viewed as little more than a puff of obnoxious wind?

Stephen Cooper

BURFORD LIBRARY

May is such a busy month for us all. Just as nature reaches a crescendo, so it seems from the details below, do the activities taking place at the Burford Library ramp up.

This all just reminds us that our library is so much more than just a collection of books, as evidenced from the latest research from Oxfordshire Libraries showing that visitor numbers have significantly increased.

Details next month of our inimitable July Pimms and Poetry event.

Maureen Percival - *Friends of Burford Library*

Burford Library hosts VE day

Burford Library is celebrating 80 years of VE day with a visit from Priory class at the primary school. We will be facilitating a session and discussion about life and times in 1945.

In Britain, the end of the Second World War in Europe was announced by the BBC in the evening of 7 May 1945. 8 May was designated Victory in Europe or VE Day. Churchill marked the occasion by declaring 8 May a public holiday. There will be memorabilia to see and an opportunity to reflect. This will be a closed event. The library will be open the usual hours during VE day.

Thank you everyone for supporting your library.

Carol-Amy Holdcroft - *librarian*

Library Diary for May :

Hungry Caterpillar story time and Craft (Under 8s) Children to be accompanied by an adult. Booking required. Free event! 27 May at 12-1pm.

National Geo Week with The Oxfordshire Geology Trust 24 May - 1 June.

'Secrets of the Landscape' walk around the town using our trail guide starting at the library. Display also in the library. Free. All welcome!

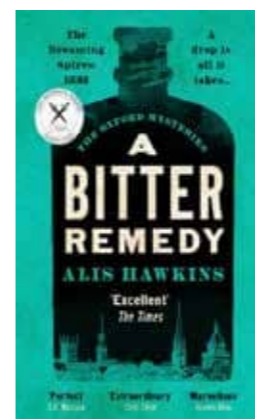
Dementia Action Week 19 - 25 MAY Coffee and Company special in support of Dementia Awareness Friday 23 May at 10.30-11.30.

In celebration of West Oxfordshire Art Weeks artists will be exhibiting in the library for the month of May. Free. All welcome!

Alis Hawkins at Reading Group 27 May 2-3pm (see notice below).

VE Day display courtesy of Jennie Craven (see article for details).

Carol-Amy Holdcroft



LIBRARY BOOK CLUB

In April the Book Club had the pleasure of reading

A Bitter Remedy

by

Alis Hawkins

Now Alis has kindly agreed to talk to us at our May meeting

Guests are welcome to join us in the library, 27 May at 2pm

JeanLawton



BURFORD TOLSEY | Tolsey Talks

THE ROLLRIGHT STONES - George Lambrick

A reflection on their Folklore, Cultural and Archaeological value

Thursday 7.30pm, 29 May. Burford Baptist Church, Witney Street

George Lambrick, chairman of the Rollright Stones Trust will introduce us to over 5000 years of their history.

The Rollright Stones is an ancient site located on the Oxfordshire and Warwickshire border. They are a complex of three Neolithic and Bronze Age megalithic monuments near the village of Long Compton, a 30 minute drive from Burford. Constructed from local oolitic limestone, the three monuments, now known as the King's Men and the Whispering Knights in Oxfordshire and the King Stone in Warwickshire, are distinct in their design and purpose. They were built at different periods in late prehistory. During the period when the three monuments were erected, there was a continuous tradition of ritual behaviour on sacred ground, from the fourth to the third



millennium BCE

Tickets are £6 per person and can be booked online, www.burfordtolsey.org/events. Admission is free for all Benefactors of the Burford Tolsey, simply turn up at the door where we will check you in.

New This Year: Linger Longer After The Talk Option - With A Glass Of Wine

Peter Martin

NORTHLEACH CHURCH

The Pinewood Saxophone Quartet Perform
 'Hooray For Hollywood!'

Saturday 24 May 7.30pm

The Pinewood players share a love of film music and are inspired by the affinity between the Hollywood and London film industries. In addition to drawing upon the repertoire legacy of the great Hollywood Saxophone Quartet of the 1950s, the Pinewood Quartet creates its own arrangements and also incorporates jazz improvisation. Tickets at www.northleachevents.co.uk

Jane Quelch



BURFORD ANNUAL TOWN MEETING 2025

Wednesday 21 May at 7pm in the Warwick Hall

Reports from our Oxfordshire County Councillor, our West Oxford District Councillor and from the Town Council

Should you wish to raise any matters, please let Christina, our town clerk, know so that any research can be carried out prior to the meeting at town.clerk@burford-tc.gov.uk

There will be time for questions and answers

We look forward to welcoming our residents



OPEN DAY

Monday 5th May 2025

10am – 3pm

Tanners Lane, Burford OX18 4NA

Free taster session

Come and give bowls a try – you might enjoy the game



Mob 07547 633391

www.burfordtownbowlsclub.com

Email: burfordtownbowlsclub@gmail.com

GUIDED WALKS WITH THE COTSWOLD VOLUNTARY WARDENS

Details of the walks available are described on the website (below). Please check walk details carefully on the website, including whether booking is necessary. Additional walks may be published on the website.

<https://www.cotswolds-nl.org.uk>

Naunton to Guiting Power – Tuesday 6 May – Moderate 3hr 6ml

From seeing two surviving churches with towers, and passing now closed and converted chapels, we also pass Cotswold stone quarries and have scenic views – weather permitting. Bring a drink/snack.

Start: 9.30am The Black Horse Inn, Naunton. Please park considerably near the pub. OS Map ref: SP 119 235.

Three Hills and a Sauna Friday 9 May Strenuous: 10.5 miles 5.5 hours

An intriguing title but there really is a wild sauna. The fabulous views are always there on this strenuous undulating walk.

Start: 10.00am Whichford CV36 5PE. Please park thoughtfully around the green.

Chastleton and the Four Shires Thursday 15 May Easy 5 miles 2.5 hours

Join the walk to enjoy lovely rural scenes and find out about the title.

Starts 10:00am Chastleton House National Trust car park GL56 0SU

Walking the Ways 3 (of 5) – Tuesday 20 May – Moderate 4.5hr 8ml

This walk leaves Guiting Power, heading south to join the Windrush Way, walking the fields to Aylworth and on past the golf club to the village of Naunton. Here we walk briefly alongside the River Windrush and join the Wardens' Way on undulating field paths back to Guiting Power. Please bring refreshments for a mid-morning and picnic lunch stops. Refreshments are available in the village following the walk. Subsequent walks are planned for 17 June and 22 July.

Start: 10.00am Guiting Power village hall, Church Street Guiting Power OS Map ref: SP 094 246.

PLEASE use appropriate footwear as some walks may be steep and muddy in places. EASY - Length may vary but terrain is mainly flat (level); MODERATE - includes some hills and rough ground.

STRENUOUS – may be rough underfoot and ascents and descents may be steep. We welcome guide and hearing dogs - sorry, others not allowed.

Walks are free although we do invite donations to help fund our conservation and improvement work.

Sheila Wasley and Rosemary Wilson



Museum reopened 1 April with new exhibition opportunities

For years, after turning right on entering the museum, our visitors were welcomed by William Lenthall benignly gazing down on them from on high, as shown below. But come the start of this new season of opening to the public from 31 March, comes a new layout.



By turning the existing pier on which Speaker Lenthall resides at right angles, so he can now enjoy watching the town's traffic and tourists out of the window, we have been able to create the space for four totally new flexible display panels superbly crafted by Drew Walker, who over the years has made all the display units for the museum. These new panels (shown below) will enable us to mount different exhibitions and displays without the need to empty one of our permanent display cabinets and being constrained by their relatively small capacities.

This huge step forward has been possible thanks to a much appreciated grant from the Lord Lieutenant of Oxfordshire facilitated by Peter Higgs, Burford's mayor, and the Burford Festival Trustees to whom we wish to express our gratitude. Our first exhibition using the new space will be 'Helen Bryce: an artist's lasting contributions to Burford' as shown below.



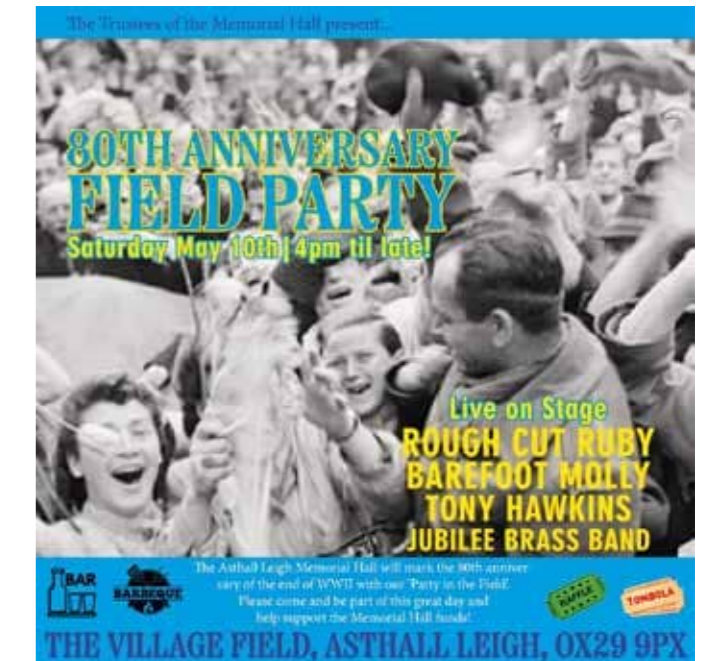
Volunteers are at the heart of the Museum & Archive

By the time you read this article we will have held two special events for our much appreciated supporters. The first being the annual reception for our museum room stewards. If you were unable to attend and would like to find out more about this wonderful way to have fun, meeting new people whilst enjoying the warmth of our new heating, then please contact David and Jan Cohen on 07899 837482.

The second event, 'Celebrating Success', invited our donors, volunteers, Friends and Benefactors to the Baptist Church to celebrate and raise the flag for our many achievements since the BTMA was formed, and hear about our exciting future plans, and above all, to enable us to thank everyone present for helping build our vibrant community museum and archive. We are so grateful. The afternoon culminated with a good chat over a cup of tea, accompanied by cakes, scones, jam and cream, (obviously all zero calorie!). To join our group of Supporters please see www.burfordtolsey.org/support-us *Peter Martin 01993 822769 petermartin@btinternet.com*

ASTALL LEIGH COMMEMORATION

We are celebrating the 80th Anniversary of the end of the Second World War in style at the Asthall Leigh Memorial Hall. OX29 9PX. Saturday 10 May 4pm until late.



At 4pm the Jubilee (Oxford) Brass Band will play some of your favourite wartime songs while you enjoy a delicious cream tea.

Then at 6pm the bar and BBQ open for food and drink and on the stage there's live music from singer/songwriter Tony Hawkins and local groups Barefoot Molly and RoughCut Ruby, so you can dance the night away.

Free entrance, raffle with amazing prizes and there's also a great tombola.

Martin Hawkins

LETTERS TO THE EDITORS

100 up

I'd like to thank The Bridge and especially Ruth and Cedric Reavley for featuring an interview last month with my mum Elsie Garratt in honour of her 100th birthday. She was really pleased to see it in print! It was a lovely summary of Mum's over 70 years in the Burford area. If anyone read the whole interview they may have noticed just a small error. There was a reference to Mum's parents which said they were living at Windrush Camp in a Nissen hut. In fact it was mum and dad who lived there after they were married in about 1952. Mum's parents were Black Country born and bred and lived all their lives in Wednesbury.

Lucy Vine

Lost Airfields

A few years ago, I ran an exhibition in The Oxfordshire Museum in Woodstock entitled 'Lost Airfields' about Second World War RAF stations in the Cotswolds and West Oxfordshire. I'm giving a talk in Bampton on June 19th at 7.30pm on the same subject. If anyone in Burford has any pictures or stories about RAF Broadwell - or the 203rd General Hospital at Bradwell Grove - I'd love to be able to include them. Despite the amount of information already available, I'm always conscious that there's so much more to learn. I'm equally conscious that as the years pass, places like these are taken over for new uses, demolished or just left to decay, so trying to preserve their history is so important. If you have any stories or pictures I could include, please do let me know on markmcarthurchristie@gmail.com. Thank you.
Mark McArthur-Christie - Bampton (home) and Burford (office)

French Letter

It's our normal policy to decline to publish anonymous letters. However we decided to make a rare exception in respect of this missive which was left at Burford's post office by a mysterious group of local demoiselles.

Nous nous demandons s'il y aura des poissons d'avril au dessous du Pont? - Question d'un groupe de dames francophiles de notre coin des Cotswolds.

It goes on to explain:

In France, the tradition on 1 April is to stick a paper fish on the back of an unsuspecting person (mainly children) or to tell a "fishy" story which, when it appears to be believed, "Poissons d'avril" is declared by the jubilant child.

To which we can only respond: merci et nous vous souhaitons une bonne pêche (Thank you and we wish you good fishing).



NEW TO BURFORD & AREA?

Welcome. The Burford & District Society will be happy to deliver your free copy of the 'Living in Burford & District' Pack with details of many of the local facilities, clubs and societies. Simply email your name and address to lizannjack@gmail.com

ARTWORKS 2025

At Westoxarts

West Ox Arts is a not-for-profit arts organisation with the aim of promoting knowledge, understanding, and appreciation of the arts in West Oxfordshire and the surrounding area.

26-April - 31 May 2025

Gallery open 11.30 - 4.30pm

Tuesday - Saturday

Sunday 2 - 4pm

Closed Mondays

17-26 May 11-6pm

Market Square, Bampton OX182JH

Tel 01993 850137

<https://www.westoxarts.com/>



Maggie White



Claire Milner

ALICE'S BOOK GROUP

We all expected to really enjoy *I Haven't been Entirely Honest with You* by Miranda Hart, but though we all did enjoy it, some - "Marvellous! Really impressed" - did so more than others and it was not a wholehearted success. Hart's television comedy series was very funny; in that she would make humorous asides to camera which made one laugh. However she translates the matey tone to the book, with mixed success and those that heard the author read it on Audible enjoyed it most.



Being addressed as MDRC (My Dear Reader Chums) was a trifle irksome, though by the end of this rather drawn-out account one became inured/accustomed to it. It seems a long book, charting a journey from Hart's absolute exhaustion to the successful management of her health. Perhaps a little less would have been more.

Miranda Hart suffered ill health for very many years, various ailments attacking her throughout her adult life, leaving her tired and overwhelmed. A final episode which left her so exhausted she collapsed, and unable to move for several hours, persuaded her to make her well-being her own priority. She gives us an account of her research and her implementation of, mainly psychological, theories. Despite the relaxed manner of her story-telling Hart proves to be assiduous in her research, and her sources are wide-ranging, with a comprehensive list at the end of the book. Which we avoided.

It transpires that her chronic ill health stemmed from a tick bite when she was 14. This was undiagnosed for nearly a quarter of a century, and proved impossible to cure. However over the course of the few years documented in this book, she learnt to manage the symptoms and return to a more productive life.

The foregoing sounds as if the book is all gloom and psychological speak, but it is undoubtedly a Miranda Hart production. There is much wisdom in this book, but also flashes of her trademark humour sparkle throughout. Her studies reveal some fascinating nuggets so we also learnt much about our reactions and the working of the mind.

Another nice touch was the intermittent hints of an ongoing romance, which came to a satisfactory result at the end of the book.

Next we look forward to *An Improbable Life* by the television reporter Trevor McDonald.

Veral Marshall



"It is now May, and the sweetness of the air refresheth every spirit: the sunny beams give forth fair blossoms, and the dripping clouds water Flora's great garden..." William Shakespeare

I would like to thank all the lovely people of Burford and the surrounding area who have popped into the bookshop to tell me how much they love our children's shop - Little Madhatter Emporium. It brings us great joy to see the faces of the families, or sometimes just grown-ups, as they emerge smiling from Narnia or our jungle. Given the current economic climate, running any business on Burford High Street is an increasing challenge but the joy and laughter that comes with bookshops spurs us on.

Meanwhile, at the Madhatter Book Club, we are finalising the details of our trip to Paris next month. With plans to visit the bouquinistes, Shakespeare and Co and Les Deux Magots excitement is running at an all time high!

What are you going to read this month, here are a few of our favourites.

Is A River Alive? by Robert Macfarlane

From celebrated writer Robert Macfarlane comes this brilliant, perspective-shifting new book - which answers a resounding yes to the question of its title.

At its heart is a single, transformative idea: that rivers are not mere matter for human use, but living beings - who should be recognised as such in both imagination and law. *Is a River Alive?* takes the reader on an exhilarating exploration of the past, present and futures of this ancient, urgent concept.

Of Thorn & Briar: A Year with the West Country Hedgelayar by Paul Lamb

Following the rhythm of the seasons, *Of Thorn & Briar* describes Paul's life on the road and the practical aspects of his job. It is about practising a craft with skill, preserving our heritage for future generations and celebrating the glory of the landscape he's spent his life caring for.

Theory & Practice by Michelle de Kretser

Theory & Practice is a mesmerising account of desire and jealousy, truth and shame. It makes and unmakes fiction as we read, expanding our notion of what a novel can contain. Michelle de Kretser, one of Australia's most celebrated writers, bends fiction, essay and memoir into exhilarating new shapes to uncover what happens when life smashes through the boundaries of art.

Burford Literary Festival 2025

Tickets will be released shortly for Burford Literary Festival. We are delighted to bring you a glorious selection of authors from Gill Hornby, author of *Miss Austen*, to economist, lawyer and broadcaster, Linda Yeuh. Please ensure you have the weekend saved in your diary - 26-28 September. We look forward to welcoming you and sharing conversation and enlightenment.

Many thanks for your support. Books without readers are just paper and ink but books read and shared change the world.

Kim Harvey



BURFORD OIL SYNDICATE

(Covering Burford, Fulbrook, Taynton and Bradwell Village Only)

The last order date for the 2024/25 year will be Thursday 1 May by 5.00pm. with delivery is expected between 6 and 18 May, but this will depend on market conditions. No late orders will be accepted. Information on the next oil year will be published in the June edition along with our AGM report for members.

For more information or to join the syndicate and order online visit www.burfordoil.co.uk, or membership application forms, and order forms are available from Reavley's Chemist.

Any questions contact Peter Higgs - 822462.

OCC COUNCILLOR REPORT

End Of Term Report



I wanted to thank all The Bridge readers for their support over the last eight years and would hope to have their support for a further four years as your county councillor after the election on Thursday 1 May. I will continue to campaign on several key issues: stop the dumping of raw sewage into our rivers; improve our roads, which are in a dire condition, by reducing the

number of potholes with better, lasting repairs; and continue to work on a countywide plan to limit HGVs using our villages and market towns as cut-throughs.

Burford Bridge Pavement

At its April meeting, Burford Town Council approved OCC going ahead to install bollards on either side of Burford bridge to provide a better pedestrian walkway. This is an interim measure prior to a more permanent solution to be found, which will require further funding.

Local Government Reorganisation And Devolution

Councils across Oxfordshire have agreed a reply to a government request for interim proposals on the shape of local government reorganisation in the county – with OCC outlining its preferred option for a single county unitary council.

What are the options being submitted?

Each cabinet or executive endorsed a joint response to government that sets out how local authorities in our area are collaborating to develop proposals for new unitary structures. The response included information on each of the three options being developed for Oxfordshire, in line with the criteria set out in the government's statutory invitation.

The options are:

- A single county unitary council for Oxfordshire – Oxfordshire Council. This is the preferred option of OCC.
- North Oxfordshire Council (created from the existing district councils of Cherwell, Oxford City and West Oxfordshire) and Ridgeway Council (created from the existing district councils of South Oxfordshire and Vale of White Horse and the unitary council of West Berkshire).
- Three unitary authorities – with a unitary city on expanded boundaries as well as northern and southern unitaries, also including West Berkshire.

Further detailed discussions will take place between the councils so that final proposals can be submitted by 28 November. The government will then decide what form unitarisation will take in Oxfordshire.

Surface Dressing Programme To Begin This Month

Some roads across Oxfordshire will be improved as part of a highway maintenance programme beginning this spring. Surface dressing involves applying bituminous emulsion onto the road as a binder. This is followed immediately by the application of chippings to dress the emulsion layer. Details on the OCC website: <https://news.oxfordshire.gov.uk/road-resurfacing-programme-to-begin/>

There is an additional £1.5m as part of the February budget which will allow our gullies on the highway network to be cleaned once per year.

Grants On Offer To Help Communities Tackle Flooding

Communities who want to carry out projects to reduce the impact of flooding can apply for grants of up to £25,000. Groups wishing to apply have until 18 April to register their expression of interest by emailing the flood management team on floodmanagement@oxfordshire.gov.uk

OCC Cllr Nicholas Field-Johnson, Burford & Carterton North nick.fieldjohnson@oxfordshire.gov.uk and nfjuk3@gmail.com

THE RISSINGTONS LOCAL HISTORY SOCIETY



Great Rissington, Little Rissington, Upper Rissington, Wyck Rissington and the local area

THE HUMAN COSTS OF THE BRITISH CIVIL WAR Talk by Professor Andy Hopper

Friday 16 May at 7.30pm

VILLAGE HALL, UPPER RISSINGTON GL54 2QW

Visitors welcome £3.50 Refreshments included

Enquiries 07815 606770/ information.RLHS@gmail.com

Susan Brown



Barbara and Irene were born within the near vicinity of Burford and have almost always lived here. Joanne moved here over 30 years ago having been born in Northern Ireland. They have over 200 years of Burford history between them and they are going to share their stories next month. They all hope to be at the VE day WI tea party @ The Chapel. *Rev Gill Crippen*

GUITING MUSIC FESTIVAL 2025

25 July to 3 August
guitingfestival.org

We profile below two of the artists taking part in the festival.

Ruby Turner

I really didn't expect to chat with Ruby Turner, MBE, world-famous soul, gospel and R&B singer, songwriter and actor about recovery from knee surgery and doing your physio, but that's what happened when we talked in mid-March – it's an experience we share. Ruby was taking a break from performing with Jools Holland and from her solo engagements; as a creative artist with a diary booked years ahead, prioritising major things like surgery is challenging.

Her career spans over 40 years – there is lots to celebrate and many, many recordings to explore. Coming from a musical family, Ruby says she is "blessed with my voice" and blessed to make a living from it. "What you do through your love of music, of art, is the thing – it's not for love of self."

Ruby has sung at the Millenium Dome/O2 arena, Glastonbury, Buckingham Palace to select a tiny sample – and soon at the Festival Marquee for Guiting Festival. How does she adjust to such different venues? It's so much to do with the team, who run the PA and sound systems. Good relations with the band are vital too - knowing the sets, enjoying the music, seeing everyone has a good time. Her responsibility is to be vocally ready. Work in the theatre informs her vocal technique, notably in projecting the voice; singing technique, warming up, looking after the voice when it is at its strongest in frequent use on tour.

One startlingly long working relationship is with Jools Holland. Ruby has, in her words "been a fixture" for 29 years (and still going strong). The call to join Jools came after a "whole different ballgame" being part of the Culture Club with Boy George in the 1980s, where she learned "loads". Just now, Jools is on tour in Europe without her. Guiting Music Festival sees her on 2 August as part of a solo tour.

We talked about song writing. These weeks of recovery and rest (and physio) at home are a crucible of creativity. Having uninterrupted time away from the busyness of touring is precious. Lyrics are crafted. Melodies are experimented with. Tracks are shared with keyboard players, and collaborative outcomes are tweaked. Writing songs is one of Ruby's "happy places" - "it gives such joy".

Ruby both sings covers of other people's songs, and has had others cover her songs. I asked what she looks for in someone else's songs – "I'm just looking for great music – music that moves my soul" was her response. A recent joy, and an utter surprise, was finding that she's on the King's Playlist (launched for Commonwealth Day this spring), singing "My Country Man" in collaboration with Jools Holland. It's a song they've had in the set for ages, and they sang it live for the King years ago. She's "mighty proud" to be one of the 17 tracks on that playlist.

Ruby is looking forward to coming back to the "gorgeous Cotswolds". She loves being invited to play for festivals. It's been said that she "breathes life and meaning into any song". Taken in combination with her own words "enjoy the gift you've been given", what more reason could you want to buy a ticket?

Ruth Reavley



Tamsin Waley-Cohen

There are some musicians who take up their calling when very young. Then there is Tamsin Waley-Cohen. At the age of two she saw someone playing the violin and began to pester her parents to be allowed to learn the instrument. A year later they caved in, and she is now one of this country's most distinguished violin soloists.

Her family is "sort of" musical. Neither of her parents is a musician but her sister is the composer Freya Waley-Cohen and there were other musicians further back. She pursued her studies at the Royal College of Music and for several years took part in the International Musicians Seminar at Prussia Cove (it's in Cornwall, not eastern Germany) which puts on masterclasses for aspiring performers. Before she graduated from the RCM she was already getting gigs as a soloist with the Royal Philharmonic Orchestra with whom she still performs regularly. She also became artistic director of the music series at the Tricycle Theatre (now called the Kiln Theatre) in London through the then director, Nick Kent. This led to her being invited to perform at the festival at Guiting Power, officially the most isolated village in Gloucestershire but clearly a cultural hotspot. She has returned there every few years.

Tamsin is deeply committed to contemporary music and has forged strong relationships with living composers. She premiered Huw Watkins' *Concertino* and later debuted his *Violin Sonata* at Wigmore Hall. She also performed Oliver Knussen's *Reflections* which was composed for her and Huw Watkins.

She plays regularly as a soloist and recently performed the Brahms and first Bruch concertos in separate concerts. But she also enjoys playing contemporary music and working in small ensembles. For some time she led the Albion String Quartet but this broke up through the combined effects of Covid and Brexit. The former led to the cancellation of many recitals while Brexit made performing abroad difficult because of cost and bureaucracy. Concert fees in Europe are higher, she explains, and small groups rely on these to boost their income. As well as performing, Tamsin has taken on roles that influence the broader musical landscape. She is the artistic director of the Two Moors Festival, where she curates programs that explore diverse themes and engage with a wide audience.

Tamsin has an extensive discography from works by C.P.E. Bach to John Adams, and from Dvořák to Carter. Critics have praised her interpretations, noting her technical prowess and imaginative musicality. For instance, her exploration of post-1944 solo violin repertoire has been particularly lauded.

Tamsin is returning to the Guiting Festival on 30 July with a small ensemble for performances of Brahms's *Piano Trio no. 1* and Schubert's *Trout Quintet*. The Trout is one of the most famous compositions in the classical chamber music repertoire. She describes it as "a beautiful piece which brings out such a feeling of inner joy". The Brahms trio is a youthful work, revised later, which "has the same mood of warm embrace."

Gordon Elliot



BURFORD AND KINGHAM ROTARY CLUB PRESENTS

OXFORD WELSH MALE VOICE CHOIR



Saturday, May 3rd at Burford Church

Doors open 6:30pm
 Concert starts at 7pm
 Tickets £20.00
 (inc refreshments, ex booking fee)

Tickets from Eventbrite (web address below)
 or via the QR code
www.tinyurl.com/rotarychoirtickets



Proceeds from the event will be donated to
 Prostate Cancer UK and
 Maggie's Cancer Support



Oxford Welsh Male Voice Choir will be performing in Burford

The Rotary Club of Burford and Kingham is very pleased to present the Oxford Welsh Male Voice Choir in concert on Saturday 3 May in Burford Church. Join us for an evening of beautiful harmonies and powerful performances. Be prepared to be swept off your feet by the incredible voices of this very talented choir. As well as their normal programme, the choir will be performing a medley of wartime favourites to help celebrate the 80th anniversary of VE Day. The ticket price includes refreshments during the intermission. All proceeds will be donated to Maggie's Cancer Support and Prostate Cancer UK. Get your tickets now to ensure your opportunity to enjoy this magical musical experience.

Tickets are £20.00 to include refreshments (ex booking fee). Doors open at 6:30pm, concert starts at 7:00pm and ends at 10:00pm. Please buy your tickets in good time, as this is already proving to be a very popular event. Tickets are available from Eventbrite: www.tinyurl.com/rotarychoirtickets or you can use the QR code on shown here and on our posters. We look forward to seeing you on the day.

If you would like to help us with events or would like more information on joining our club, please email the secretary. burfordandkinghamsecretary@gmail.com
www.burfordkinghamrotary.club
www.facebook.com/burfordkinghamrotary
 Stuart Jackson

THE WHALL WINDOW IN BURFORD CHURCH

Christopher Whall (1849-1924) was the leading stained glass artist of the Arts and Crafts movement, which emerged from the attempt to reform design and decoration in mid-19th century Britain. He was recognised as a pioneer of design, noted for his use of vivid colours and detailed imagery.

One of the finest examples of his work can be seen in the window of the south transept of Burford Parish Church. It depicts scenes from the life of St John the Evangelist and serves as a memorial to the three Johns: John Meade Falkner and Sir John Noble who gave the window to the church and John Leggare, an earlier benefactor.

The church has now acquired a touchscreen which enables visitors to the church to view the window in more detail and to learn more about it. The system has been created by experts from the Centre for the Study of Christianity and Culture at York University and paid for by the Friends of Burford Church with the help of a generous grant from the Olive Greening Trust. Some cathedrals have similar displays but we are not aware of any others in parish churches. Via the screen it is possible to see close-ups of the various panels of the windows from photographs taken by Pete Gould and Derek Cotterill, read about what they depict, understand the significance of the stories to Christians and find out more about stained glass and the window's designer.

The Friends of Burford Church, chaired by the Rev Cedric Reavley, is a charity set up around 80 years ago to undertake improvements to the church and to unite all those who love and value the church in a company of Friends. It organises a number of events during the year, the next of which will be a visit to Tewkesbury Abbey in early July. Details can be obtained from the church office.

Gordon Elliot



Detail from the window showing the Last Supper
 Photo Credit: Pete Gould

NICHOLAS DEWEY



Nicholas was born in London in 1931, spending his school years during the war in Devon. His National Service was in the Navy, part of the time with British forces in Germany. He had won a prestigious scholarship to Balliol College Oxford, where he read history, graduating in the mid-50s. After a few years in London, working in television production, he moved to the United States, teaching while studying for his PhD in the history of medicine. There, he met and married Margaret in 1962. They had four sons, and Nicholas was also stepfather to Margaret's son and daughter by a previous marriage. In the early 70s the family re-located to the UK, settling in Oxfordshire, where Nicholas started a business selling old and rare medical books. Ten years later, they moved to London and Nicholas opened an antiquarian medical bookshop near Great Ormond Street Hospital. A few years later Nicholas and Margaret moved back to the States, first to Florida, then Santa Barbara, California.

However, they returned to England every summer and for the past 22 years have had a home in Burford, which Nicholas had always loved. He and Margaret enjoyed the life of the town, attending concerts and talks and formed a friendship group around the Quakers. Nicholas had given talks himself at the Burford Festival, drawing on his academic and professional experience. Margaret passed away in the Cotswold Home last July at the age of 99 (obituary in the October 2024 Bridge). Nicholas had followed her there, and died peacefully, aged 93, on 26 February. To the end he was a clear thinker and speaker, and was unfailingly kind and appreciative to his friends and visitors. A service of thanksgiving for his life will be held at Burford Quaker Meeting House this coming July.

Graham Hadley - March 2025

WHAT'S ON AT FARMED MAY

FarmED, Honeydale Farm, Station Rd, Chipping Norton OX7 6BJ

Information and Booking: www.farm-ed.co.uk

From Literature Events to Lunchtime Talks and Friday Farm Walks, there's plenty to get excited about in May.

Our Oaken Bones: An evening with the author

Thu 01 May - 18:00 - 20:00

An exclusive evening with Merlin Hanbury-Tenison, author of *Our Oaken Bones: Reviving a Family, a Farm and Britain's Ancient Rainforests*. Hosted by Patrick Neale, who will be talking to Cornish conservationist, veteran and founder of the Thousand Year Trust, Merlin Hanbury-Tenison about his wonderful new book which has been achieving great acclaim. A wonderfully inspiring story of renewal and the healing power of nature.

Wonderful Woodworking

Tue 13 May - 11:45 - 14:00

Join local craftsman, Joe Southead for a talk about the meditative art of spoon carving, as he takes us through the process of turning a freshly felled log into a beautifully finished spoon, with just a few basic hand tools.

Orchard Blossom Walk

Wed 14 May - 11:45 - 14:00

Discover the FarmED Heritage Orchard when it's at its peak of beauty - in blossom. The trees were planted about 10 years ago and are now beginning to bear fruit. Of the 260 trees in the orchard, there are about 100 different apple varieties as well as pears, plums, gages, damsons, cherries, and even a few quince, mulberry, walnut, apricot, nectarine, and peach.

Agroforestry Farm Walk

Mon 19 May - 10:30 - 12:30

As part of the Agroforestry Open Weekend 2025, discover what we do at FarmED, and the benefits and challenges of agroforestry. Have you always wondered what agroforestry is? Are you interested in planting trees and growing food? What are the benefits and key considerations? Is it a financially viable option? Where might you find funding and support?

Regenerative Whisky

Wed 21 May - 11:45 - 14:00

Meet the team behind Fielden, a whisky brand who are doing things differently. Whisky tasting session included! Fielden Whisky is trialling what they call 'no-chem regen', a low-input form of farming that they use to produce the rye, barley, and wheat they need for their English whisky. Different from most whisky brands, Fielden works directly with farmers to grow their own grain, meaning that they can build up a series of arable practices that is low-input and better for the environment, whilst also maintaining a good grain output year-on-year.

Art and Environment with Judith Yarrow

Thu 05 Jun - 11:45 - 14:00

Hear local artist Judith Yarrow talk in depth and explain what drives her recent work. Hear Judith talk more in depth about what drives her recent pieces. With reference to her residency at FarmED and her present and developing work on the temperate rainforests of north west Wales, she will talk about how her art has increasingly become focused on the ecology of a specific place and the importance of wildlife diversity.

Friday Farm Walk

Most Fridays, 10:30 - 14:30

Explore Honeydale Farm on an inspiring and informative guided farm walk, led by founder Ian Wilkinson or a member of the FarmED team. Discover the 107 acre regenerative demonstration farm and learn about sustainable farming and food systems, whilst taking in the beautiful views of the Cotswolds.

Fiona Mountain

THE BRIDGE TIMETABLE

The closing date for entries to the editorial sections of the magazine is 10th of the month preceding publication. Please send articles and information to:

editor@thebridgeburford.co.uk

Alternatively, you can leave letters and articles at the Burford Post Office for us to collect.

Advertisements need to be submitted before the 10th of the month, and artwork provided before the 12th of the month, preceding publication. Please contact:

advertise@thebridgeburford.co.uk

MUSCULAR DYSTROPHY APPEAL

For the 5th time, I'm taking part in this year's 'Duchenne Dash' on 16 and 17 May, cycling 300km from London to Paris in 24 hours, alongside 160 other riders.

From my previous four Dash rides, I can confirm that 300km is a VERY LONG WAY in one day's riding!

But I'm doing it because it's quite an amazing charity. If ever you want to see how a really purposeful and well organised charity should work, then this is the one. Your donation goes directly to research and care for boys with Duchenne muscular dystrophy, a devastating muscle-wasting disease diagnosed in childhood. I can't recommend the charity highly enough.

My target this year is to raise a minimum of £5,000, and I want to do that by asking 250 supporters to donate just £20 each.

I do hope you can make a contribution, no matter what amount, to help me reach my target.

My JustGiving page with further details is at: <https://www.justgiving.com/page/tom-barry-4>

Thanks very much
Tom Barry





An exhibition of drawings by Burford artist Patricia Broughton opens on **May Day** and runs for a month at the **Warwick Hall, Church Lane, Burford**. The exhibition features watercolours and pen and ink illustrations from Patricia's best-selling family picture-book, **The Kitten Who Lost His Meow**. The feline fable has been inspired by Patricia's love of the Cotswolds and Oxfordshire countryside with the landscapes in the book forming the backdrop to a narrative that takes the Kitten on a magical journey to find his lost meow. The book has an unusual view from Fulbrook of Burford and its St John The Baptist Church alongside pen and ink watercolours of Swinbrook, Windrush, Sherborne, Burford Town and the City of Oxford.

Patricia graduated from Manchester University with a First-Class Honours Degree in English Literature and went on to do post graduate research in 17th century garden poetry at the University of Oxford. She then established a career as an artist in Oxfordshire and did ink, pencil, watercolour, iPad works and caricatures. Patricia has lived in the Cotswolds for many years and last year moved to Burford. Her book is a high-quality casebound and sewn hardback with 140 original drawings and it can be bought at the **Warwick Hall Reception** during the exhibition and from Burford's **Reading Room** in the Garden Centre. Visit www.patriciabroughton.co.uk to see more of Patricia's work.

DIARY OF SPECIAL EVENTS

26 Apr-31 May	Westoxarts Exhibition - see Article	Bampton	
1 -3 May	Wychwood Players "Murdered To Death"	New Beaconsfield Hall	7.30pm
1-31 May	Find My Meow Exhibition - see Article	Warwick Hall	
3-5 May	Lechlade Vintage Rally + Country Show	Langley Lane, Clanfield	10.00am
Sat 3 May	Oxford Welsh Male Voice Choir tickets from jpw@jass.co.uk	St John the Baptist Burford	TBA
Mon 5 May	Bowls Club Open Day	Burford Bowls Club	10-3pm
Thur 8 May	VE Day 80th Anniversary Celebrations	Asthall Leigh Memorial Hall	4pm ++
Thur 8 May	VE Day 80th Anniversary Celebrations	See Posters in Burford	9am ++
Sat 10 May	Bee Keeping Workshop - see Article	Asthall Manor	10am-4pm
Sun 11 May	Sherborne Five Mile and Fun Run	See announcement	
Tue 13 May	FABW1 Talk - Tales of an Estate Agent	Burford Baptist Church	7.30pm
Wed 14 May	TASC Lecture - Sicilian Splendours	Warwick Hall	10.50am
Fri 16 May	Talk - The Human Costs of Civil War	Upper Rissington Village Hall	7.30pm
Sat 17 May	Levellers Day	Warwick Hall	10.30-4.30
17-26 May	Artworks in Charlbury	Charlbury	
17-26 May	Exhibition of Art in Felt	Witney Blanket Hall	
Sat 17 May	Barnsley Village Festival - see Ad	Barnsley	10-5pm
Wed 21 May	Burford Town Council Annual Meeting	Warwick Hall	7pm
Thur 22 May	Horticultural Society Talk - Kitchen Garden	Burford Bowls Club	2.15pm
23-26 May	English Music Festival - see Article	Dorchester Abbey	
Sat 24 May	Pinewood Saxophone Quartet	Northleach Church	7.30pm
27 May - 1 June	Various Events - see Article	Burford Library	
Thur 29 May	Tolsey Museum Talk on the Rollright Stones	Burford Baptist Church	7.30pm
Sat 31 May	Windrush Film Night	Windrush Village Hall	7.30pm
Sat 7 June	Southrop Fete and Country Fair	Southrop	1-4pm
Sat 14 June	River Day Swinbrook - see Article		
Sun 15 June	Taynton Open Gardens	Taynton	2-5pm
20-22 June	In the Footsteps of the Mitfords	Asthall Manor	TBA
Sun 29 June	Burford Singers Concert - see Article	Burford Parish Church	7.30pm
Wed 2 July	Much Ado About Nothing	Asthall Manor	TBA
25 Jul- 3 Aug	Guiting Music Festival - see article	Guiting Power	
26-28 Sept	Burford Literary Festival	TBA	TBA

USEFUL CONTACTS + INFORMATION

Please check hours of opening which are subject to change

Sometimes this information is changed without notification to us, so please check before turning up to an event.

REGULAR LOCAL EVENTS, CLUBS AND SOCIETIES

Aerobics	Monday 6.15; Thursday 11.45 + 6.15pm	Warwick Hall	Gill Hames 822971 gillianhames46@gmail.com
Alcoholics Anonymous	Wednesdays 7.30pm; Fridays 1.00pm	Bradwell Village Hall	Patrick 0786 796 0716
Astally Arms	Last Friday of the month	Memorial Hall Asthall Leigh	From 7.00 pm
Badminton Group	Monday nights. Friendly all abilities.	Burford School 8-10pm.	Kevin 704655 scareyradar@yahoo.co.uk
BEAGles aka Burford Environment Action Group	Third Monday of the month	The Prince of Burford	7.30pm
Burford Bridge Club	Every Tuesday 5pm - 7pm	Burford Baptist Church	07831 301886 Amir Hashimi
Burford Badminton Club	Tuesday nights 8-10pm	Burford School - fun, social, all abilities	Vijay 891043 vijaysmobile@gmail.com
Burford Crafters	3rd Wednesday of the month	Burford Library 2.30-3.30	Judith Butcher 01993 824194
Burford & District Society	Meet 7 times a year	Warwick Hall at 7.00pm	Bert Clough 07943 720668
Burford Town Bowls Club	Friendly Roll-up Mondays from 6.30	Bowls Club Tanners Lane	Jan Bolton 07547 633391 secretary@burfordbowlsclub.co.uk
Burford Trees care/planting	4th Sunday of the month	Community Allotment - Tanners Lane	lucy.staveley@gmail.com
Coffee and Company	Every Wednesday 10.30-12 midday	St John the Baptist Church	Diana Peters 01993 822785
Cub Scouts	Mondays (term time)	Scout Hut 6 - 7.30 pm	Mandy Bielby 07941 470465
Fencing	Tuesdays	Bradwell Village 7-9pm	Keith Money 01982 448295
Fulbrook & Burford WI (FaBWI)	Second Tuesday of every month	Burford Baptist Church Hall	Jennie Craven 07710 103015 thefabwi@oxfordshirewi.co.uk
Fulbrook Coffee am	Every 3rd Thursday	Fulbrook Meeting Place 10.30 - 12	Lyn Bibbings 823640
Fulbrook Fitness Group	Thursday (wef Sept 2021)	Fulbrook Meeting Place 9am	Pat Ferrett 822892
Horticultural Association	Fourth Thursday	Bowls Club - times vary	Janet Copley 01451 844210
North Cotswold Arts Assoc.	Every 2nd Wednesday	Warwick Hall	2-4pm
Pickleball - fun, social sport	Mon 11-1pm, Thu 10-12pm, Fri 8-10pm	Charlbury Community Centre	Vijay 01993 891 043 or vijaysmobile@gmail.com
Pilates Class	Wednesdays 10.00am	Burford Baptist Church	Elizabeth Jarvis cotswoldpilates123@gmail.com
Pilates Class	Thursdays 9.30am. Suitable for men and women; Tuesdays 6.15pm - 7.15pm	Warwick Hall	Elizabeth www.wellnessity.co.uk 07932 981023
Rhyme Time	Friday 9.15-10.00 am Term Times	Burford Library (for under 5's)	Carol-Amy Holdcroft 823377
Rock-a-Tots	Tuesday during Term Time 9.45-11.15	Warwick Hall	www.burfordchurch.org/rockatots
Rotary Burford & Kingham	Monday	The Burford Golf Club	John Smith 07717 883182
Signpost - Coffee and Help	Every Wednesday in term time.	The Warwick Hall, Burford 10.00 - 12 midday	Opportunity to raise worries confidentially
Scouts	Thursday (term time)	Scout Hut 6 - 8pm	Alex Gill 07762161769 burfordscouts@gmail.com
Scrabble	1st Tuesday of each month	Burford Library (free soft drinks)	7pm
The Arts Society Cotswolds	2nd Wed (not July/Aug)	Warwick Hall 11.00	publicity@theartsocietycotswolds
The Wychwood Lodge of Freemasons	3rd Thursday Sept-April	The Masonic Hall 31 Sheep Street	Mike 868302 / Allan 822240 wychwood988@outlook.com
Time Out	Monday 11.00am - 3pm lunch and afternoon tea	Warwick Hall inc games, bingo, singing, talks	John Harrington 822451 or Sue Sheppard 824729
Windrush Film Nights	Last Saturday of the month	Windrush Village Hall	7.30pm windrushcinema@gmail.com Dan Boyle

Burford Recreation Pavilion (Children's Events) 01993 823647
Burford Pre School 01993 824031
Burford School 01993 823303
Burford Primary School 01993 822159
Burford Surgery 01993 822176
www.burfordsurgery.co.uk

Burford Tolsey Museum
 Open seven days a week
 April to October 2-5pm
www.burfordtolsey.org
Burford Town Council
 Tolsey office open Monday, Wednesday and Friday between 9.30 am and 11.30 am 01993 823647
 Email town.clerk@burford-tc.gov.uk
www.burford-tc.gov.uk

Carterton Health Centre NHS 01993 841718
 111
www.nhs.uk

Centre for Carers in Oxfordshire 01295 264545
www.oxoncarers.org.uk

Chemist Reavley's 01993 823144
Chipping Norton Veterinary Hospital
 Burford Branch 01608 642547

Churches
 Anglican St John the Baptist 01993 823788
 Roman Catholic 01993 823219
 Church of SS John Fisher and Thomas More
 Baptist Church 07967 362885
 Friends Meeting House 01993 875214

Citizens Advice Bureau 0808 2787908
 Email admin@cawo.org.uk

Community Transport
 Volunteer Link-Up 01993 776277
 Oxfordshire Comet 01865 323201
Emergency Services
 Police – non essential 101

Environment Agency
 Floodline 0845 988118
 Emergency 0800 807060

Hall Bookings
 Baptist Church gill.crippen@googlemail.com
 Burford Quaker Meeting House 01993 831282
www.burfordquakers.org
 Burford Town Bowls Club 01993 822330
 Fulbrook Meeting Place TBA
 Taynton Village Hall - Lexi Young 07909 913994
 Warwick Hall Bookings and Information
bookings@burfordchurch.org.uk

Library 01993 823377
 Tuesday 13.00 - 18.00
 Thursday 10.00 - 13.00
 Friday 10.00 - 13.00 and 14.00 - 17.30
 Saturday 09.00 - 13.00
www.oxfordshire.gov.uk/burfordlibrary

Member of Parliament
Charlie Maynard 07487 708681
charlie.maynard.mp@parliament.uk

Oxfordshire County Council
 General Enquiries 01865 815573
 Highways 08453 101111
 Faulty Street Lights 0800 317802
www.oxfordshire.gov.uk

Oxfordshire County Councillor
 Nicholas Field-Johnson 01993 878309
Post Office 01993 822174
stephencolter@aol.com

Recycling Centre
 Dix Pit, Lynch Hill, Stanton Harcourt
 Open 7 days a week 8am - 5pm
 Thursday late night until 8pm
 Closed Christmas Day and New Year's Day

Southern Electric (Freephone) 08000 727282
Thames Water 0800 3169800

Travel
 Rail Enquiries 08457 484950
 Public Transport Enquiries 08712 002233

West Oxfordshire District Council
 General Enquiries 01993 861000
 Out of Hours 01993 705056
www.westoxon.gov.uk

West Oxfordshire District Councillor
 Hugo Ashton 07712 490517

Witney Hospital Minor Injuries 01865 903841
 Open 10.00am – 10.30pm daily
 Last Patient seen at 10pm

Witney Police Station, No front counter
www.thamesvalleypolice.uk

Please let us know if any details need amending.

editor@thebridgeburford.co.uk

CHURCH SERVICES

BURFORD BENEFICE

**St John the Baptist, Burford
PARISH CHURCH SERVICES
May 2025**

04 May	
Benefice Holy Communion (CW)	9.30am
Morning Service (CW)	11.00am
Evening Meeting	7.00pm
11 May	
Choral Matins (BCP)	9.30am
Holy Communion	11.00am
Evening Meeting	7.00pm
18 May	
Holy Communion (CW)	9.30am
Morning Service (CW)	11.00am
Evening Meeting	7.00pm
25 May	
Morning Prayer (CW)	9.30am
Morning Service	11.00am
Evening Meeting	7.00pm
29 May Ascension Day	
Holy Communion (CW)	10.30am

Every Wednesday at 10.30am we have a Holy Communion Service followed by Coffee & Company.

St James the Great, Fulbrook

11 May	
Morning Prayer (CW)	9.30am
18 May	
Matins (BCP)	9.30am
25 May	
Holy Communion (BCP)	9.30am

St John the Evangelist, Taynton

18 May	
Morning Prayer (BCP)	11.00am

St Nicholas, Asthall

11 May	
Evening Prayer (BCP)	6.00pm

St Mary, Swinbrook

04 May	
Holy Communion (CW)	11.00am
11 May	
Morning Prayer	11.00am
18 May	
Morning Prayer	11.00am
25 May	
Morning Prayer	11.00am

St Oswald, Widford

25 May	
Evening Prayer (BCP)	6.00pm

9.30am & 11.00am services in Burford are also live streamed. Swinbrook Service are available to catch up on Monday. These can all be found on our website or YouTube Channel.

Tarnia Usher

ST JOHN FISHER AND ST THOMAS MORE

Sunday Mass: 9.30 am

Weekday Masses:

Tuesday - 10.00 am
Thursday - 10.00 am

Ascension Day (29 May) Mass 10.00am

For updates please see catholicchurchburford.org.uk or the church noticeboard for details.

Dan Boyle

BURFORD QUAKER MEETING

Pytts Lane, Meeting for Worship every Sunday at 11.00 a.m.

Myra Ford 01451 810484, or Graham Hadley 01993 875214

BURFORD BAPTIST CHURCH

Welcome to Burford Baptist Church. It's now a lovely warm space with a new heating system in place. We want the community to come and use our facilities and we are happy to negotiate rates for hire depending on the event.

We have a growing number of regular users including FAB WI meeting on the second Tuesday evening of the month and pilates meeting every Wednesday at 10am.

Both would welcome new people to join them at BBC.

Do get in touch.
Gill Crippen

SIGNPOST

Come and chat to someone over a cup of coffee about a matter you are struggling with. A team of volunteers from Burford Church will be available to listen and do their best to help.

All matters will be dealt with confidentially.

The Warwick Hall, Burford

Wednesdays during term time only 10.00am to 12.00 noon.

A service of Choral Matins will take place at St John the Baptist Church at 9.30am on the second Sunday of the month. All are welcome.

DIRECTORY OF LOCAL BUSINESSES & SERVICES

Company Name	Business Type	Phone
Antiques @ The George	Award winning, friendly antiques centre	01993 823319
CJD Architects	Chartered Architects	01993 823646
Hickman Brothers Landscapes Ltd	Garden Design and Construction, Landscape and Garden Supplies www.hickmanlandscapes.co.uk	01993 822226
Jenny Smith	Spanish & French tutor. Building confidence GCSE/KS2. Experience in schools; DBS check held.	07908 602547
Kendall & Davies Solicitors	Expert, friendly, client-focused legal services with offices in Burford. www.kendallanddavies.co.uk	01993 822025
Taylor and Fletcher	Estate Agents / Chartered Surveyors / Fine Art Auctioneers and Valuers / Commercial Agents / Rural Specialists	01993 220579
Mallams Auctioneers Ltd	Auctioneers and Valuers	01242 235712
Pauline Carter BA AmusLCM CTABRSM MISM	Piano Teacher	01993 774568
Peter Garratt	Painter and Decorator	01451 810376 07788 896496
StayCotswold	Holiday/Short Lets, Relocation, Corporate Stays, Property Search, Sales & Lettings. www.staycotswold.com	01993 259444
Thomas Ellis-Rees	Clock & Barometer repairs. tellisrees@gmail.com	01993 822132
Vick's Byway Garage	Bushey Ground, Minster Lovell, Witney, OX29 0SW. MOTs by arrangement	01993 823142
VJ Hancock & Co Ltd	Certified Accountants / Chartered Tax Advisers www.vjhaccountancy.co.uk	01993 822817
Lionheart Later Life Planning and Probate	Wills – Lasting Powers of Attorney – Trusts and their registration – Fixed fee Probate – Equity Release and Free Financial Advice. www.lionheartlaterlifeplanning.co.uk	07769 730616.
EiWell	Physiotherapy, Occupational Therapy, Nutrition Helping people stay independent as they get older	01865 238185
Burford Foot Clinic	Chiropody Castles Yard, Pytts Lane, OX18 4SJ	07884318091
Tony Williams	Welding/Brazing/Soldering & Metalwork Home/Garden & General repairs & alterations	07722334696
Fairways Cotswold Explorer	for all your Airport & Cruise transfers	01993823152 07751472125
The Stone Gallery	Makers of Gold and Silver Jewellery, agent for Georg Jensen. Paperweights & Pictures. www.stonegallery.co.uk	01993 823302
NFU Mutual	Insurance Pensions Investments - Call your local Witney agency	01993 776716
Patti Good	Therapist, Teacher & Healer Free Online Guided Meditation Classes www.pattigood.com	07880 998568
Radnor Martin	Estate agents covering Burford and the surrounding villages	01993 765115
TC Garden Services	Gardening, Landscaping, Patios, Decking, Fencing & Gates, Raised Beds. Contact Tony for a free quotation. www.tcgs.uk	07771 888304
Samantha James	Regarded organic - Private Hairstylist - Experienced. Email - samloujam@googlemail.com	07772 601495
J Coles Plumbing & Heating	For all your plumbing emergencies/needs and bathroom refurbishments.	07947693427
Oxford Construction	Building, Groundworks and Project Management Services Email; enquiries@oxfordconstruction.co.uk	01865 922001
Grimebusters	Dirty carpets? Upholstery? Call Grimebusters - your local professional cleaners. Competitive rates. Free estimates.	01993 868924
Woodgrove Estates	Contemporary offices to let in Fulbrook. office@woodgrove-estates.co.uk	01993 640004
Piano with Victoria	Lessons for all ages and abilities in Burford. ABRSM + improv / songwriting lessons.	07737493980
Funtastic French, Lou Rutterford	French Language Coach. www.funtasticfrench.co.uk	07913 905484

E TAYLOR & SON FUNERAL DIRECTORS

Private funeral home
Memorials supplied and renovated
Here to help 24 hours per day

01993 842421
Corbett Road, Carterton, OX18 3LG

BIBURY PROJECT

DESIGNED - CRAFTED - COMPLETE INSTALLATION



150 The Hill, Burford OX18 4QU - 01993 824690
www.burfordkitchensandinteriors.co.uk



Enhance the appearance of your property with our
quality assured friendly service



Moss Removal & Roof Cleaning - Render & Brickwork Cleaning
Patio & Driveway Cleaning - Gutter Clearing
Installation of Bird Protection & Chimney Cows
info@mossinator.co.uk - 01993 670005



Architectural practice which combines sensitive, imaginative building and garden design with technical expertise and project management skills, all tailored to suit client requirements.

We operate within The Cotswolds, Woodstock and Oxford, and have a positive relationship with Local Authorities. Please call for an initial, no-obligation discussion and site visit.

Panton Architectural Design, Wood Farm Studio, Woodleys, Woodstock OX20 1HN

t: 01993 810704 e: post@pantondesign.info w: pantondesign.info





**Gateway Antiques
Burford**
Established over 35 years



Mid 19th century walnut, ivory and bone inlaid table in the Dutch taste on barley-twist ebonised supports and stretchers circa 1860

Our opening hours are from
Monday - Friday 10.30am - 5pm
Saturdays 10.00am - 5pm
Sundays 1pm - 4pm

Cheltenham Road, Burford Roundabout,
Burford, Oxon OX18 4JA

01993 823678
gatewayantiques.co.uk



COTSWOLD INNS & HOTELS



✦ A COLLECTION OF SEVEN 3 & 4 STAR HOTELS ✦

✦ ALFRESCO DINING ✦

✦ SECLUDED GARDENS ✦

✦ ROSETTE AWARDED RESTAURANTS ✦

✦ PERFECT WEDDING & ✦
CONFERRING LOCATIONS

TO MAKE A RESERVATION PLEASE EMAIL
enquiries@cotswold-inns-hotels.co.uk

or book online at www.cotswold-inns-hotels.co.uk



The Bear of Rodborough
Stroud
T 01453 878522

The Swan Hotel
Bibury
T 01285 740695

The Lamb Inn
Burford
T 01993 823155

The Bay Tree Hotel
Burford
T 01993 822791

The Manor House Hotel
Moreton-in-Marsh
T 01608 650501

The Hare & Hounds Hotel
Tetbury
T 01666 881000

The Close Hotel
Tetbury
T 01666 502272



*A lady's 18ct gold cased
wristwatch by Tag Heuer.
Sold for £4,500 plus buyer's
premium in November 2024*

Mallams
1788

Free informal Valuation Mornings

Friday 11 April, 9 May and 6 June
10.00am – 12.30pm
Warwick Hall, Burford OX18 4RY

**Free & confidential valuations on any
items you may be considering selling at auction.**
Tel: 01865 241358 or visit www.mallams.co.uk

AUCTIONEERS AND VALUERS SINCE 1788

CHORLEY'S AUCTIONEERS

Cotswolds Heritage since 1862



Sold for £12,500



Sold for £85,000



Sold for £10,500

Complimentary Auction Valuations

Chorley's auctioneers have been at the centre of Cotswold and Gloucestershire's art and antique market for decades. Our expertise makes us the local auctioneers of choice for high value and carefully curated auctions.

Monthly Auctions of Art & Antiques

Probate & Insurance Valuations

Contact us today for your valuation

Open Valuations Thursdays 10am-1pm

Prinknash Abbey Park
Gloucestershire GL4 8EU

01452 344499
info@chorleys.com

chorleys.com

Woodgrove
Estates

Contemporary Offices to Lease
Fulbrook OX18 4BH



Offices available
NOW!



Contact us for more details
and to arrange a visit.

Woodgrove Farm offers a range of office
sizes and layouts and all benefit from;



Private parking



Site-wide wireless fire
alarm with 24/7 remote
monitoring



Superfast FTTC
connectivity



Individually controlled
electric heating



Private kitchenette



Private washrooms



Friendly helpful landlords

www.woodgrove-estates.co.uk
office@woodgrove-estates.co.uk
01993 640014



—Seth—
DIXON
• DESIGN & BUILD •

Your Planning, Building & Renovation Partner

From a simple extension, delicate renovation to a new build
Applying traditional styles within modern day building techniques
Individual bespoke ideas and plans
Vigorous cost management
Call for a no obligation chat to discuss your plans

*Making your
dreams a reality*

07793 74 73 72

info@sdd-b.com www.sethddb.com



COURTNEY JONES
FINANCIAL

Achieve the future you want

We all imagine our future differently.

Whatever your goals, we believe there is value in taking
advice from someone you trust. We will work with you to
plan, grow and protect your financial future.

Let's start a conversation.

Tony Jones
Director

07771 766654
tony.jones@sjpp.co.uk
www.courtneyjonesfinancial.co.uk

Associate Partner Practice

**St
James's
Place**

Courtney Jones Financial is an Appointed Representative of and represents only St. James's Place Wealth Management plc (which is authorised and regulated by the Financial Conduct Authority) for the purpose of advising solely on the group's wealth management products and services, more details of which are set out on the group's website www.sjp.co.uk/products. The 'St. James's Place Partnership' and the titles 'Partner' and 'Partner Practice' are marketing terms used to describe St. James's Place representatives. Courtney Jones Financial is a trading name of Courtney Jones Financial Services Ltd.

SJP Approved 15/04/2025

SJP13570e_DS B3 (10/24)

**Oak
Windows and
Doors.com**



**Specialist manufacturers of high
quality, traditional timber windows
and doors. Proudly manufactured,
here in the Cotswolds**

We have developed a range of
carefully designed windows, sash
windows and doors to suit period
properties, listed buildings
and modern homes.

All of our products offer modern
security and energy saving features
to compliment their traditional styling.

www.oakwindowsanddoors.com

01993 832442

 Hickman Brothers Landscapes Ltd

GARDEN & LANDSCAPE SUPPLIES

Shop online at www.hickmanlandscapes.co.uk





Contact us on - 01993 822226
sales@hickmanlandscapes.co.uk

Opening Times
 Monday - Friday 07:30 - 17:00
 Saturday 08:00 - 14:00

SKIP & PLANT HIRE




Hickman Bros Landscapes, Shipton Hill, Fulbrook, Burford, OX18 4BZ




COTSWOLD GATE
 BURFORD
 A PORTHAVEN CARE HOME

Barguss
 CONSTRUCTION LTD

Historic and listed building specialists

Restoration ▪ Extensions ▪ Decorating ▪ Refurbishment

The Old Bell Foundry
 45 Witney Street
 Burford
 Oxfordshire
 OX18 4RX

 **LABC Regional Winner**

Tel: 01993 824703
 email: office@barguss.co.uk
 web: www.barguss.co.uk



Fully qualified electrician covering domestic & industrial work completed to the highest standard.

CHRIS LEWIS ELECTRICAL

07834 983155
www.chrislewiselectrical.co.uk



WINDRUSH A PROFESSIONAL & PERSONAL DOG GROOMING SERVICE

FULL GROOM • DE-SHEDDING • NAIL CLIPPING • BATH & DRY
 ONE-TO-ONE • CAGE FREE • PUPPY GROOM • HAND STRIPPING

SCAN QR CODE FOR FACEBOOK




07824 392813
emmawhittington@btinternet.com
 AKEMAN COTTAGE • ASTHALL • OX18 4HW

15 YEARS EXPERIENCE
 CITY & GUILD LEVEL 3
 FULLY INSURED

CLINICAL MASSAGE
 PILATES STUDIO
 REHABILITATION / INDIVIDUAL

MATWORK
 9:30 AM WEDNESDAYS / FRIDAYS
 8:00 PM MONDAYS / THURSDAYS



AUDRI SCHAAY
 MINDFUL TOUCH AND MOVEMENT

OXLEAZE FARM UNIT 3
 FULBROOK OX18 4BZ

01741 822858 audri@audrischaay.com




Book a visit and enjoy a complimentary afternoon tea at Cotswold Gate Care Home

To RSVP or to find out more, visit porthaven.co.uk or call 01993 222800

34 Forest Grove, Burford OX18 4FF

NURSING • RESIDENTIAL • DEMENTIA • RESPITE





Gary Williams



Steeleye Span



Ruby Turner



Tamsin Waley-Conen



Guiting Music Festival

10 days of live music in the beautiful Cotswolds

featuring the best classical, jazz & blues

25 July -
3 Aug 2025

Book online at
www.guitingfestival.org



Lenthall Concert Society thanks our sponsors for their continued support in our 2024/25 season



www.lenthallconcerts.co.uk



- Tennis Court Moss Removal
- Moss and Algae Removal
- Tennis Court Sweeping
- Driveway Cleaning
- Pressure Washing
- Lawn Renovation
- Lawn Levelling
- Moss Removal
- Hedge Cutting
- Wall Cleaning
- Grass Cutting
- Boarders
- Hedges
- Edging...

07827 266 389 | PRO.MOW@Outlook.Com

Dedicated to serving Oxfordshire and The Cotswolds, our mission is to deliver exceptional lawn care, garden maintenance, and exterior cleaning services that surpass expectations

RESIDENTIAL & COMMERCIAL

PRO MOW Grounds Care has the equipment to deliver results



RADNOR MARTIN

your property buying, selling & search agency

Unit 12 Tannery Yard, Witney Street, Burford, OX18 4DQ
office@radnormartin.com www.radnormartin.com 01993 765115

VISIT THE 35TH

BARNESLEY VILLAGE FESTIVAL

PROUDLY SUPPORTED BY

THE PIG
& The Village Pub



ROOMS &
KITCHEN GARDEN FOOD

WELL
BEHAVED
DOGS ON
LEADS
WELCOME!

£10
IN ADVANCE ONLINE
VIA EVENTBRITE
£13
ON THE GATE

SATURDAY 17TH MAY 2025

10AM TO 5PM

Proceeds go to Cirencester Food
Bank, Helen & Douglas House,
Aurora Breast Cancer & other
local charities.



Kokoro
MIND | BODY | RENEWAL

St
James's
Place



Butler
Sherborn

OUT OF THE BLUE

OXFORD'S INTERNATIONALLY ACCLAIMED A CAPPELLA GROUP

MORRIS DANCERS * CLASSIC CARS
SPLASH OF RED CHOIR * BELL RINGERS * BEER GARDEN
LOCAL ARTISTS EXHIBITING * VINTAGE TRACTORS * OWL DISPLAY
PLANT & CRAFT STALLS * TEAS, CAKES & DELI * KIDS CORNER
OFFICIAL GARDEN TOURS * FACE PAINTING * TOMBOLA

OPEN GARDENS

PIG HOTEL
GROUNDS

BARNESLEY
PARK

DOWER
HOUSE

MONKS
BRETEN

PLUS MANY MORE!

FIND US ON THE B4425 NR CIRENCESTER, GLOUCESTER GL7 5EF OR EMAIL: INFO@BARNESLEYVILLAGE.CO.UK

TICKETS AVAILABLE ON BARNESLEYVILLAGE.CO.UK AND EVENTBRITE
WWW.BARNESLEYVILLAGE.CO.UK